



WBFBP-03Z Plastic-Encapsulate Diodes

FBAP50-05W pin Diodes

DESCRIPTION

Silicon planar

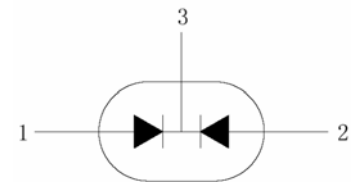
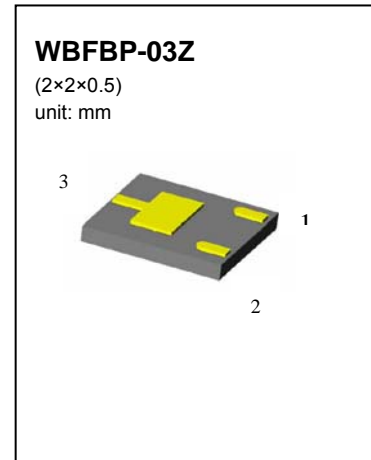
FEATURES

- Two elements in common cathode configuration in a small-sized package
- Low diode capacitance
- Low diode forward resistance..

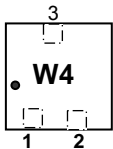
APPLICATION

General RF applications.

For portable equipment:(i.e. Mobile phone,MP3, MD,CD-ROM, DVD-ROM, Note book PC, etc.)



MARKING: W4



Maximum Ratings and Electrical Characteristics, Single Diode @T_A=25°C

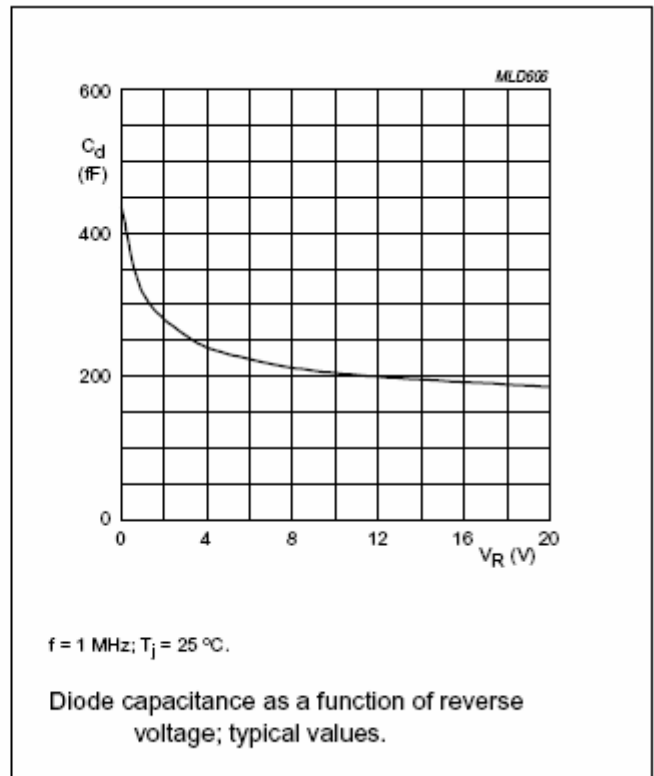
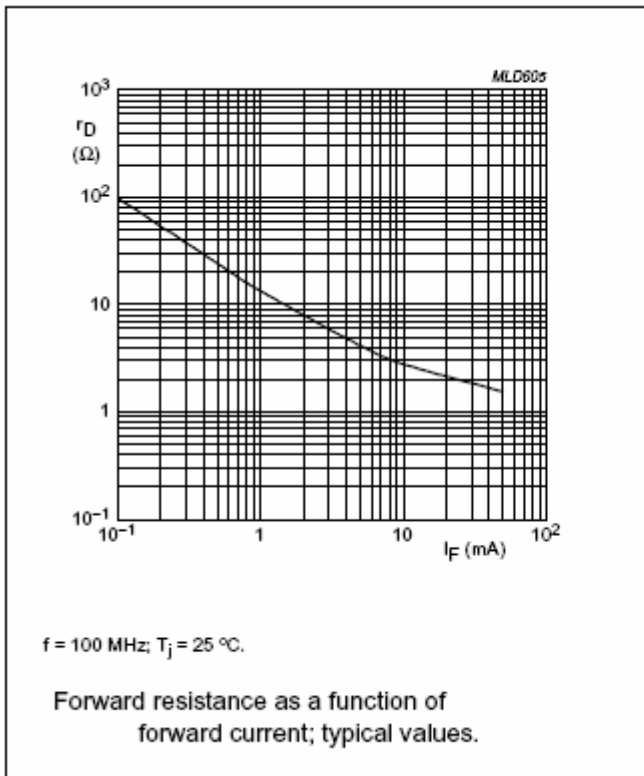
Parameter	Symbol	Limits	Unit
Continuous reverse voltage	V _R	50	V
Continuous Forward Current	I _F	50	mA
Power Dissipation (T _A =90°C)	P _d	150	mW
thermal resistance from junction to soldering point	R _{thj-s}	250	K/W
Junction temperature	T _j	-65~+150	°C
Storage temperature range	T _{STG}	-65~+150	°C

Electrical Characteristics @T_A=25°C

Parameter	Symbol	Min.	Typ.	Max.	Unit	Conditions
Continuous reverse voltage	V _R	50			V	I _R =10μA
Forward voltage	V _F			1.1	V	I _F =50mA
Reverse current	I _R			100	nA	V _R =50V
Diode capacitance	C _{d1}			1.1	pF	V _R =0V, f=1MHz
	C _{d2}			0.6	pF	V _R =1V, f=1MHz
	C _{d3}			0.5	pF	V _R =5V, f=1MHz
Diode forward resistance	r _D			40	Ω	I _F =0.5mA, f=100MHz
	r _D			25	Ω	I _F =1mA, f=100MHz
	r _D			5	Ω	I _F =10mA, f=100MHz
charge carrier life time	τ _L		1.05		μS	When switched from I _F =10mA to I _R =6mA; R _L =100; measured at I _R =3mA
series inductance	L _S		1.6		nH	I _F =100mA; f=100MHz

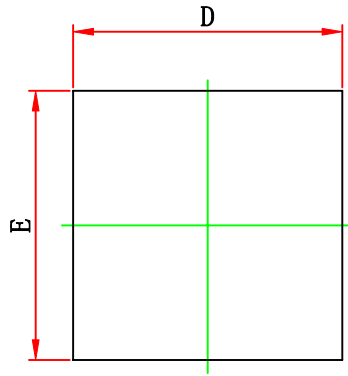
Typical Characteristics

FBAP50-05W

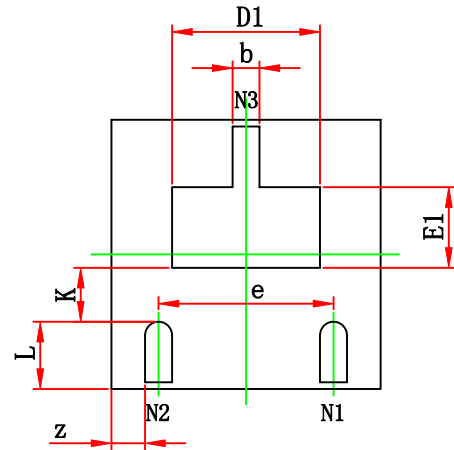




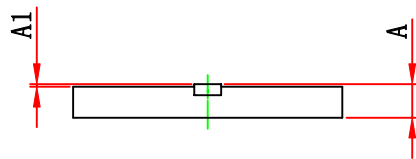
WBFBP-03Z(2×2×0.5) PACKAGE OUTLINE DIMENSIONS



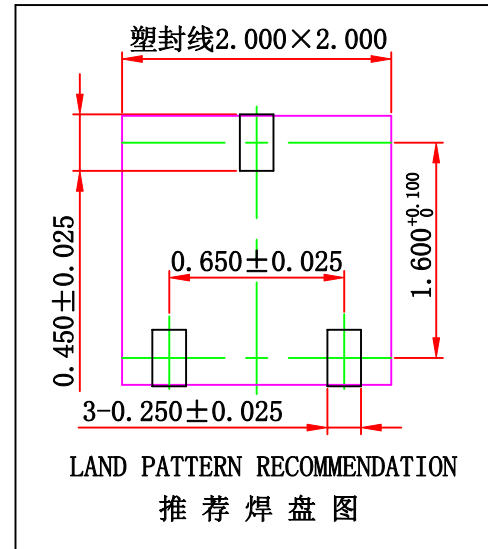
TOP VIEW



BOTTOM VIEW



SIDE VIEW



Symbol	Dimensions In Millimeters		Dimensions In Inches	
	Min.	Max.	Min.	Max.
A	0.450	0.550	0.018	0.022
A1	0.000	0.100	0.000	0.004
b	0.150	0.250	0.006	0.010
D	1.900	2.100	0.075	0.083
E	1.900	2.100	0.075	0.083
D1	1.100 REF.		0.043 REF.	
E1	0.600 REF.		0.024 REF.	
e	1.300 TYP.		0.052 TYP.	
L	0.500 REF.		0.020 REF.	
k	0.400 REF.		0.016 REF.	
z	0.500 REF.		0.020 REF.	