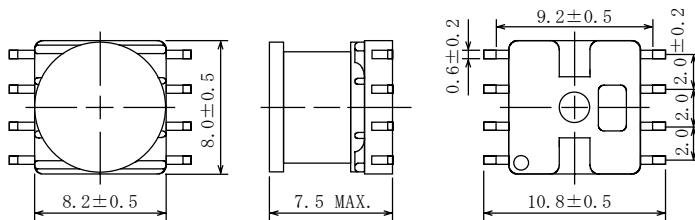
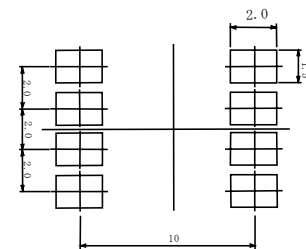


Type: CMD-8N
◆ Product Description

- 8.7×8.5mm Max.(L×W), 7.5mm Max. Height.
- Inductance range: 22 μH~1.0mH
- Rated current range: 0.28A~2.0A.
- 8 Terminal pins' type gives a flexible design as inductors or transformers.
- Custom design is available.


◆ Feature

- Magnetically unshielded construction.
- Max. Operating frequency 500kHz, Max Operating Power 2.7W (500kHz)
- Ideally used in DSC/DVC,PDA, Power supply module etc as DC-DC Converter transformers or power chokes.
- RoHS Compliance

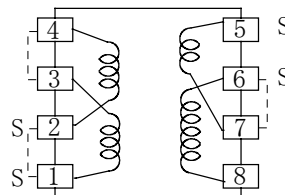
◆ Dimensions (mm)

◆ Land Pattern (mm)

◆ Specification (for transformers)

Sample No.	Inductance (1,2-3,4) 1kHz/1V	Inductance (5-7) 1kHz/1V	Rated Current (1,2-3,4)	Rated Current (5-7)
6310-T036	76μH ± 20%	1.6μH±20%	0.7 A	1.0 A

※ Rated current: The D.C. current at which the inductance decreases to 75% of its initial value or when $\Delta t=40^{\circ}\text{C}$, whichever is lower ($T_a=20^{\circ}\text{C}$).

※ Schematics (Bottom)

“S” is winding start.

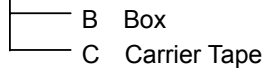


Type: CMD-8N
◆ Specification (for inductors)

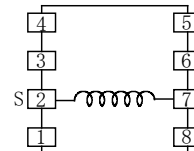
Part Name ※	Stamp	Inductance [Within] ※1	D.C.R.(Ω) [Max.] (at 20°C)	Rate Current (A)※2	S.R.F. (MHz) [Min.]
CMD8NNP-220K□	220K	22 μH ± 10%	0.15	2.0	15.2
CMD8NNP-270K□	270K	27 μH ± 10%	0.18	1.8	14.9
CMD8NNP-330K□	330K	33 μH ± 10%	0.20	1.6	13.5
CMD8NNP-390K□	390K	39 μH ± 10%	0.22	1.5	12.1
CMD8NNP-470K□	470K	47 μH ± 10%	0.24	1.3	10.8
CMD8NNP-560K□	560K	56 μH ± 10%	0.27	1.2	10.6
CMD8NNP-680K□	680K	68 μH ± 10%	0.30	1.1	9.8
CMD8NNP-820K□	820K	82 μH ± 10%	0.34	1.0	8.2
CMD8NNP-101K□	101K	100 μH ± 10%	0.39	0.90	7.6
CMD8NNP-121K□	121K	120 μH ± 10%	0.43	0.85	6.8
CMD8NNP-151K□	151K	150 μH ± 10%	0.50	0.80	6.5
CMD8NNP-181K□	181K	180 μH ± 10%	0.56	0.75	5.7
CMD8NNP-221K□	221K	220 μH ± 10%	0.78	0.70	5.6
CMD8NNP-271K□	271K	270 μH ± 10%	0.90	0.60	4.8
CMD8NNP-331K□	331K	330 μH ± 10%	1.02	0.55	4.4
CMD8NNP-391K□	391K	390 μH ± 10%	1.32	0.50	3.7
CMD8NNP-471K□	471K	470 μH ± 10%	1.53	0.45	3.4
CMD8NNP-561K□	561K	560 μH ± 10%	1.75	0.40	3.2
CMD8NNP-681K□	681K	680 μH ± 10%	2.28	0.35	3.0
CMD8NNP-821K□	821K	820 μH ± 10%	2.95	0.30	2.6
CMD8NNP-102K□	102K	1.0mH ± 10%	3.47	0.28	2.4

※ Description of part name

CMD8NNP-220K□


※ Schematics (Bottom)

"S" is winding start.


※1: Measuring Frequency

 22 μH ~ 82 μH at 2.52MHz
 100 μH ~ 1.0mH at 1kHz

※2. Rated current: The D.C. current at which the inductance decreases to 90% of it's initial value or when $\Delta t=40^{\circ}\text{C}$, whichever is lower($T_a=20^{\circ}\text{C}$).