

# 2SK3032 (Tentative)

## Silicon N-Channel Power F-MOS FET

■ Features

- Avalanche energy capacity guaranteed
- High-speed switching
- Low ON-resistance
- No secondary breakdown
- Low-voltage drive
- High electrostatic breakdown voltage

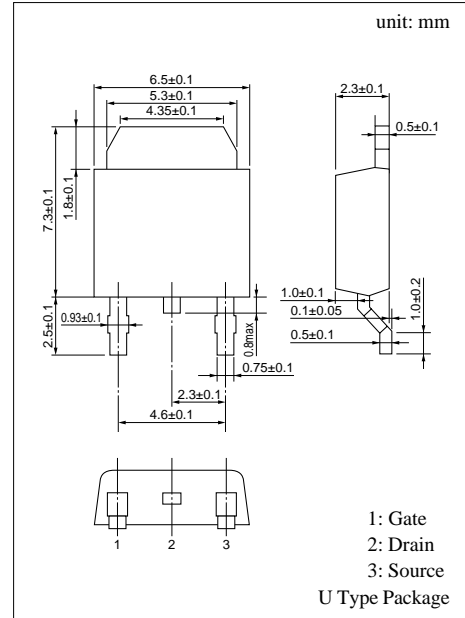
■ Applications

- Contactless relay
- Diving circuit for a solenoid
- Driving circuit for a motor
- Control equipment
- Switching power supply

■ Absolute Maximum Ratings (T<sub>C</sub> = 25°C)

Parameter	Symbol	Ratings	Unit	
Drain to Source breakdown voltage	V <sub>DSS</sub>	100	V	
Gate to Source voltage	V <sub>GSS</sub>	±20	V	
Drain current	DC	I <sub>D</sub>	±25	A
	Pulse	I <sub>DP</sub>	±50	A
Avalanche energy capacity	EAS*	31.25	mJ	
Allowable power dissipation	T <sub>C</sub> = 25°C	P <sub>D</sub>	10	W
	T <sub>a</sub> = 25°C		1	
Channel temperature	T <sub>ch</sub>	150	°C	
Storage temperature	T <sub>stg</sub>	-55 to +150	°C	

\* L = 0.1mH, I<sub>L</sub> = 25A, 1 pulse



■ Electrical Characteristics (T<sub>C</sub> = 25°C)

Parameter	Symbol	Conditions	min	typ	max	Unit	
Drain to Source cut-off current	I <sub>DSS</sub>	V <sub>DS</sub> = 80V, V <sub>GS</sub> = 0			10	μA	
Gate to Source leakage current	I <sub>GSS</sub>	V <sub>GS</sub> = ±20V, V <sub>DS</sub> = 0			±10	μA	
Drain to Source breakdown voltage	V <sub>DSS</sub>	I <sub>D</sub> = 1mA, V <sub>GS</sub> = 0	100			V	
Gate threshold voltage	V <sub>th</sub>	V <sub>DS</sub> = 10V, I <sub>D</sub> = 1mA	1		2.5	V	
Drain to Source ON-resistance	R <sub>DS(on)1</sub>	V <sub>GS</sub> = 10V, I <sub>D</sub> = 12A		64	100	mΩ	
	R <sub>DS(on)2</sub>	V <sub>GS</sub> = 4V, I <sub>D</sub> = 12A		75	120	mΩ	
Forward transfer admittance	Y <sub>fs</sub>	V <sub>DS</sub> = 10V, I <sub>D</sub> = 12A	8	16		S	
Diode forward voltage	V <sub>DSF</sub>	I <sub>DR</sub> = 25A, V <sub>GS</sub> = 0			-1.7	V	
Input capacitance (Common Source)	C <sub>iss</sub>	V <sub>DS</sub> = 10V, V <sub>GS</sub> = 0, f = 1MHz		1200		pF	
Output capacitance (Common Source)	C <sub>oss</sub>			280		pF	
Reverse transfer capacitance (Common Source)	C <sub>rss</sub>			110		pF	
Turn-on time (delay time)	t <sub>d(on)</sub>				8		ns
Rise time	t <sub>r</sub>	V <sub>DD</sub> = 30V, I <sub>D</sub> = 12A V <sub>GS</sub> = 10V, R <sub>L</sub> = 2.5Ω		7		ns	
Fall time	t <sub>f</sub>				110		ns
Turn-off time (delay time)	t <sub>d(off)</sub>				330		ns
Thermal resistance between channel and case	R <sub>th(ch-c)</sub>				12.5	°C/W	
Thermal resistance between channel and atmosphere	R <sub>th(ch-a)</sub>				125	°C/W	