

Pb Free

RoHS Compliant

Features

- Small size
- Low insertion loss
- High selectivity
- Hermetic seal

Application

- JCDMA

How to Order

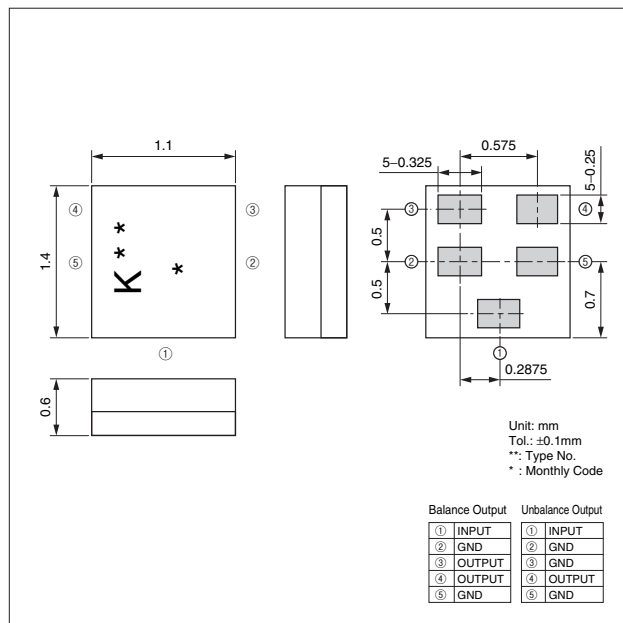
SF 14 - 0859 M 5 UB 01
① ② ③ ④ ⑤ ⑥ ⑦

- ① Type of Product (SAW Filter)
- ② Package Size
- ③ Nominal Center Frequency
- ④ Spec.
- ⑤ Number of Terminals
- ⑥ Input/ Output
- ⑦ Custom Specification

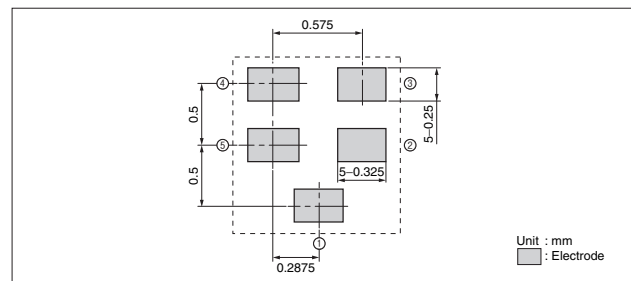
Specifications

Parts No.	Output	Application	Pass Band Frequency	Insertion Loss (dB)	Pass Band Variation (dB)	VSWR	Absolute Rejection (dB)						Operating Temperature	Storage Temperature
SF14-0859M5UB01	Balance	JCDMA 800MHz Rx Inter-stage	843MHz - 875MHz	3.0 max.	1.5 max.	2.2 max.	10MHz 750MHz 50 min.	750MHz 815MHz 50 min.	824MHz 830MHz 35 min.	898MHz 925MHz 35 min.	925MHz 3000MHz 45 min.	—	-30 to +85°C	-40 to +85°C
SF14-0859M5UU01	Unbalance	JCDMA 800MHz Rx TOP	843MHz - 875MHz	2.8 max.	1.5 max.	2.2 max.	10MHz 750MHz 40 min.	750MHz 815MHz 40 min.	824MHz 830MHz 35 min.	898MHz 925MHz 40 min.	925MHz 3000MHz 30 min.	1920MHz 1940MHz 40 min.		
SF14-2120M5UB01	Balance	JCDMA 2GHz Rx Inter-stage	2110MHz - 2130MHz	2.3 max.	1.5 max.	2.3 max.	832MHz 925MHz 50 min.	925MHz 1500MHz 42 min.	1884MHz 1920MHz 36 min.	1920MHz 1940MHz 35 min.	1940MHz 1980MHz 35 min.	2200MHz 2250MHz 12 min.		
SF14-2120M5UU01	Unbalance	JCDMA 2GHz Rx Top	2110MHz - 2130MHz	2.7 max.	1.2 max.	1.9 max.	898MHz 925MHz 35 min.	925MHz 1500MHz 35 min.	1920MHz 1920MHz 36 min.	1980MHz 1980MHz 37 min.	2025MHz 2025MHz 20 min.	2484MHz 2484MHz 35 min.		
SF14-1930M5UU01	Unbalance	JCDMA 2GHz Tx	1920MHz - 1940MHz	2.5 max.	1.5 max.	2.0 max.	10MHz 1570MHz 30 min.	1574MHz 1576MHz 35 min.	1580MHz 1770MHz 35 min.	2110MHz 2130MHz 36 min.	2130MHz 2170MHz 36 min.	2170MHz 3600MHz 36 min.		

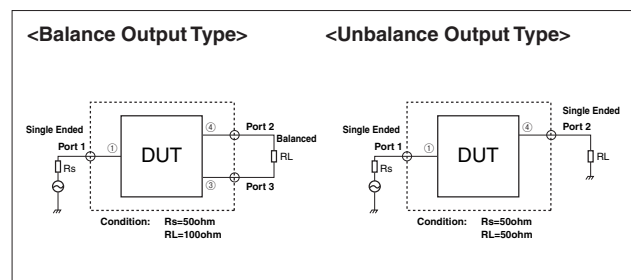
Dimensions



Recommended Land Pattern

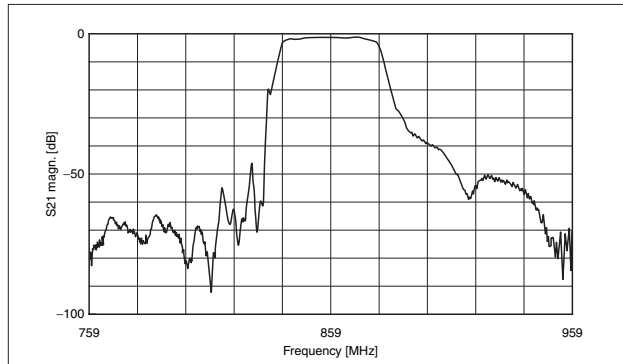


Test Circuit

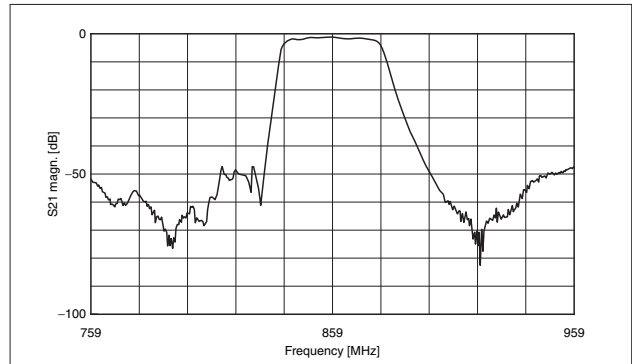


Characteristics

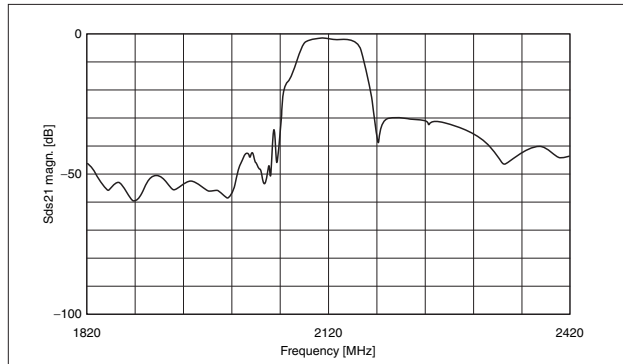
<JCDMA800MHz Rx> Parts No.: SF14-0859M5UB01



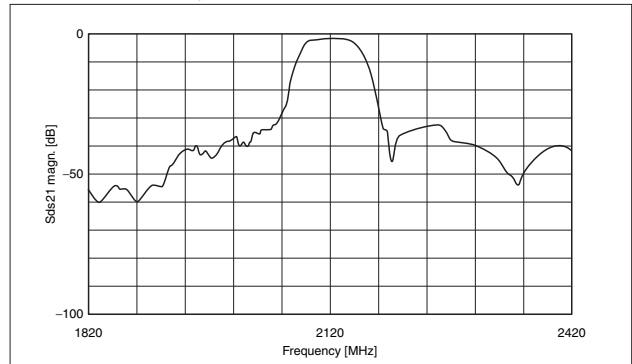
<JCDMA800MHz Rx> Parts No.: SF14-0859M5UU01



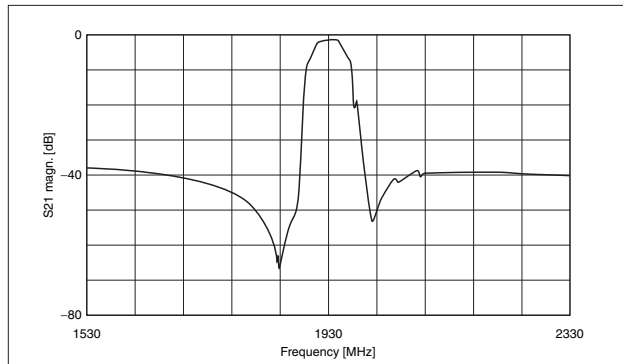
<JCDMA2GHz Rx> Parts No.: SF14-2120M5UB01



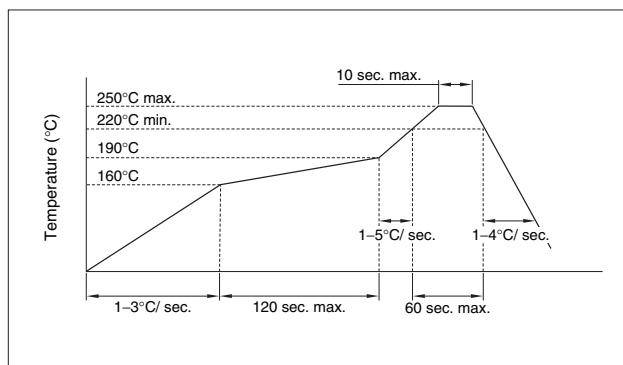
<JCDMA2GHz Rx Top> Parts No.: SF14-2120M5UU01



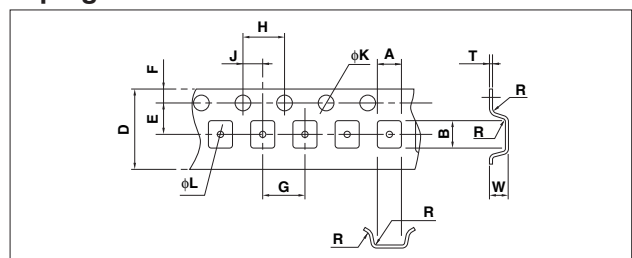
<JCDMA2GHz Tx> Parts No.: SF14-1930M5UB01



Recommended Reflow Profile



Taping Dimensions



(Unit: mm)

Part	A	B	D	E	F
Dimension	1.4±0.1	1.7±0.1	8.0±0.2	3.5±0.05	1.75±0.1
Part	G	H	J	K	L
Dimension	4.0±0.1	4.0±0.1	2.0±0.05	1.5±0.1	0.5±0.05
Part	R	W	T		
Dimension	0.3 max.	0.8±0.1	0.2±0.05		