

Pb Free

RoHS Compliant

Features

- Small size
- Low insertion loss
- High selectivity
- Hermetic seal

Application

- GSM

How to Order

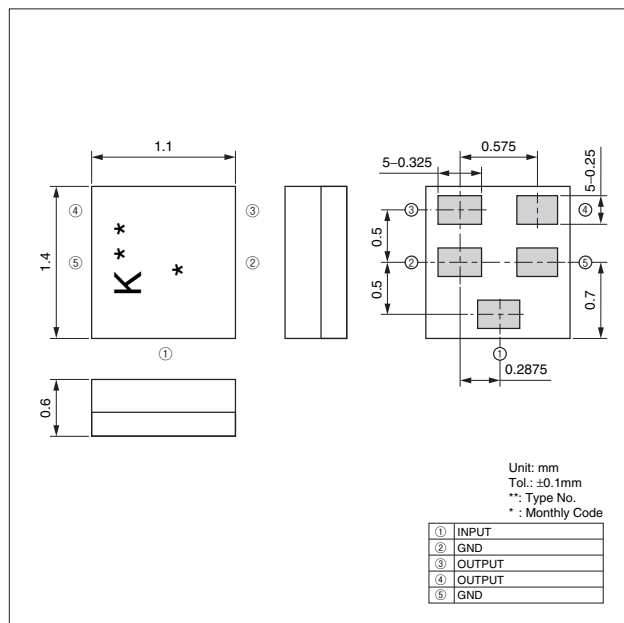
SF 14 - 0881 M 5 UB 50
① ② ③ ④ ⑤ ⑥ ⑦

- ① Type of Product (SAW Filter)
- ② Package Size
- ③ Nominal Center Frequency
- ④ Spec.
- ⑤ Number of Terminals
- ⑥ Input/ Output
- ⑦ Custom Specification (STD)

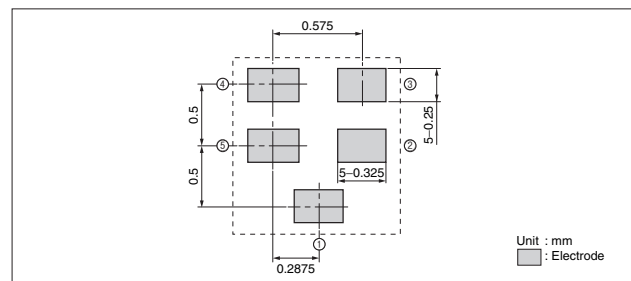
Specifications

Parts No.	Output	Application	Pass Band Frequency	Insertion Loss (dB)	Pass Band Variation (dB)	VSWR	Absolute Rejection (dB)						Operating Temperature	Storage Temperature	
SF14-0881M5UB50	Balance	GSM850 Rx	869MHz - 894MHz	1.7 max.	1.5 max.	2.5 max.	0MHz - 25 min.	840MHz - 24 min.	914MHz - 18 min.	940MHz - 25 min.	—	—	-30 to +85°C	-40 to +85°C	
SF14-0942M5UB00		GSM900 Rx	925MHz - 960MHz	2.0 max.	1.5 max.	2.3 max.	0MHz - 25 min.	880MHz - 24 min.	905MHz - 10 min.	915MHz - 18 min.	980MHz - 25 min.	1025MHz - 30 min.			2880MHz - 6000MHz
SF14-1842M5UB00		GSM1800 Rx	1805MHz - 1880MHz	2.3 max.	1.5 max.	2.3 max.	0MHz - 40 min.	1300MHz - 28 min.	1705MHz - 6 min.	1785MHz - 16 min.	1920MHz - 22 min.	1980MHz - 35 min.			3000MHz - 5000MHz
SF14-1960M5UB50		GSM1900 Rx	1930MHz - 1990MHz	2.3 max.	1.5 max.	2.3 max.	0MHz - 25 min.	1830MHz - 5 min.	1830MHz - 4 min.	2010MHz - 15 min.	2070MHz - 27 min.	2150MHz - 35 min.			3000MHz - 6000MHz

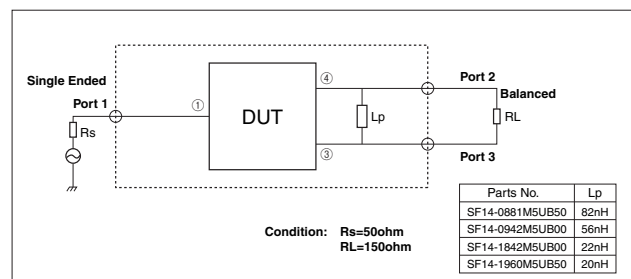
Dimensions



Recommended Land Pattern

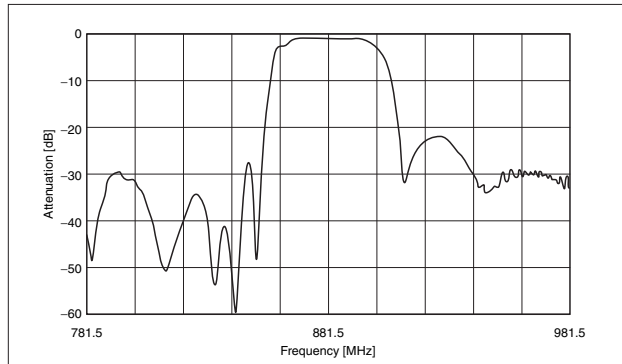


Test Circuit

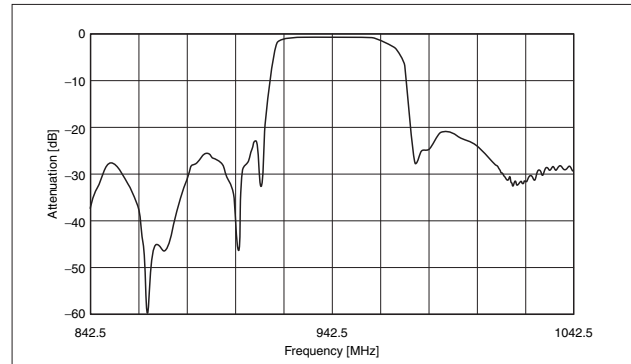


Characteristics

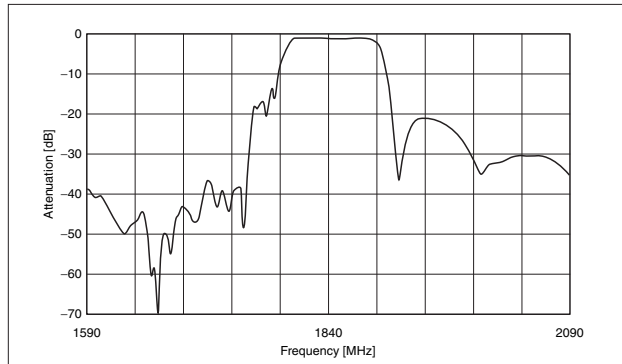
<GSM850> Parts No.: SF14-0881M5UB50



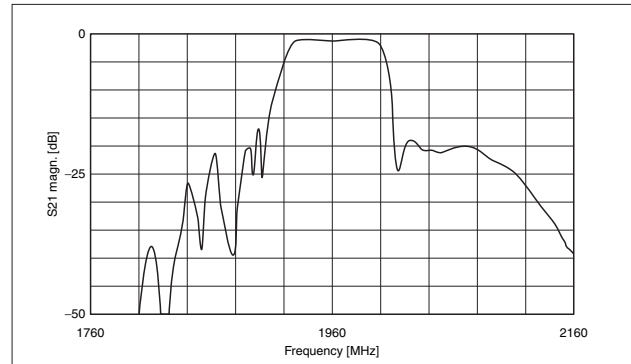
<GSM900> Parts No.: SF14-0942M5UB00



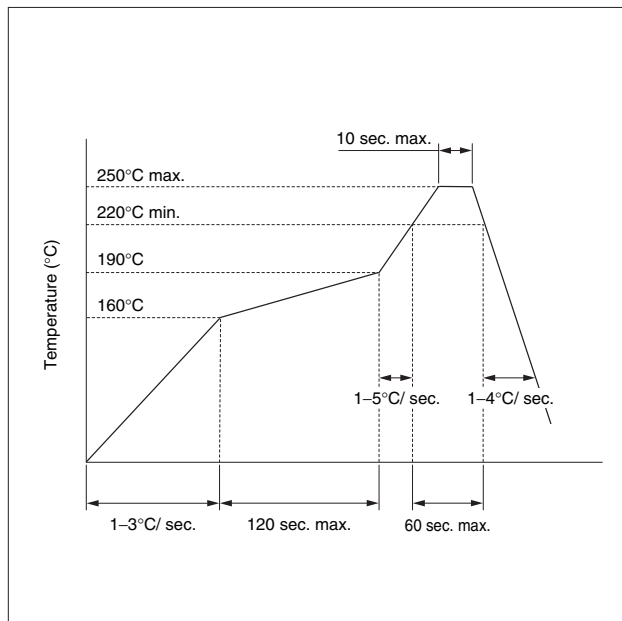
<GSM1800> Parts No.: SF14-1842M5UB00



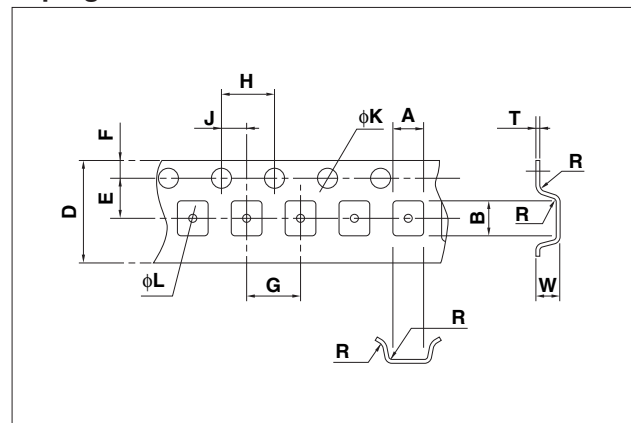
<GSM1900> Parts No.: SF14-1960M5UB50



Recommended Reflow Profile



Taping Dimensions



(Unit: mm)

Part	A	B	D	E	F
Dimension	1.4±0.1	1.7±0.1	8.0±0.2	3.5±0.05	1.75±0.1
Part	G	H	J	K	L
Dimension	4.0±0.1	4.0±0.1	2.0±0.05	1.5±0.1	0.5±0.05
Part	R	W	T		
Dimension	0.3 max.	0.8±0.1	0.2±0.05		