

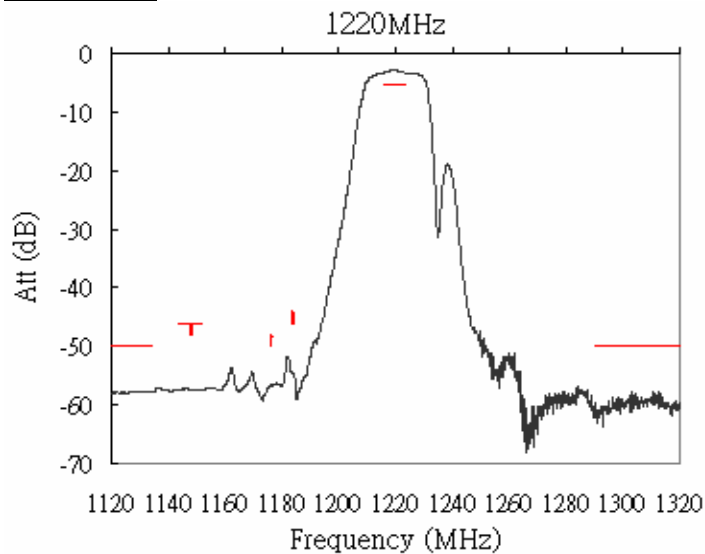


## DESCRIPTION

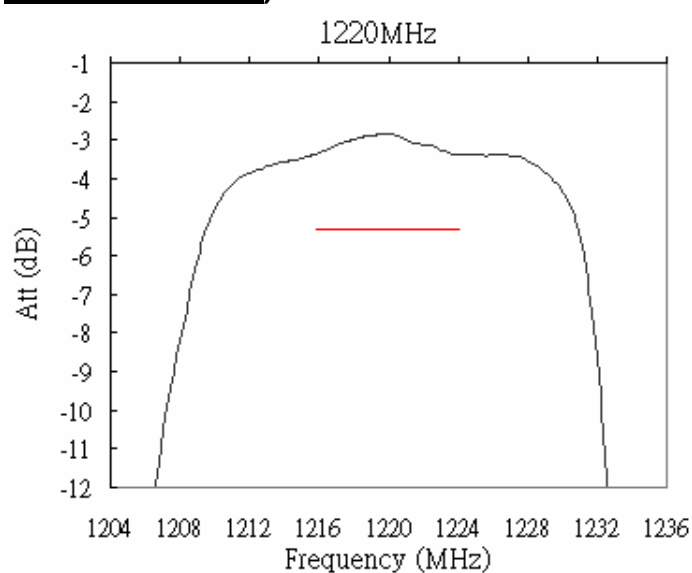
- 1220 MHz SAW bandpass filter with 3.4 MHz bandwidth for 1<sup>ST</sup> IF Stage of Digital Television.
- 3.0 x 3.0 mm LCC Package
- RoHS compliant.

## TYPICAL PERFORMANCE

### Response

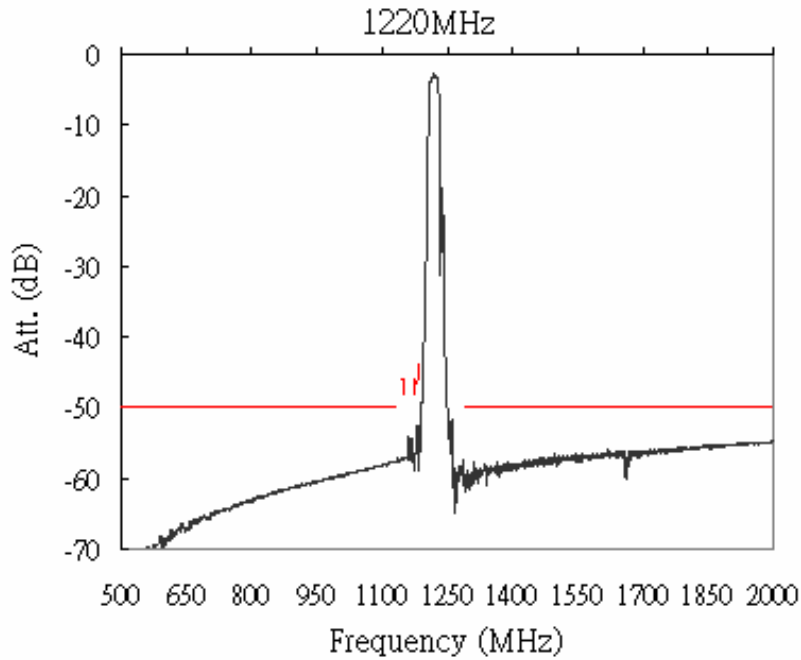


### Response (Inband)





### Response (Wideband)



## SPECIFICATION

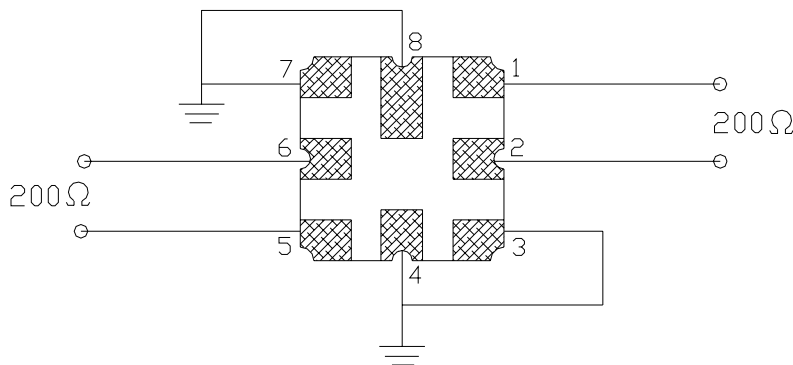
### 1. Maximum Rating

Operation Temperature Range	-35°C to +75°C
Storage Temperature Range	-40°C to +85°C
DC Voltage	0 V
Input Power Level	10 dBm

## 2. Electronic Characteristics

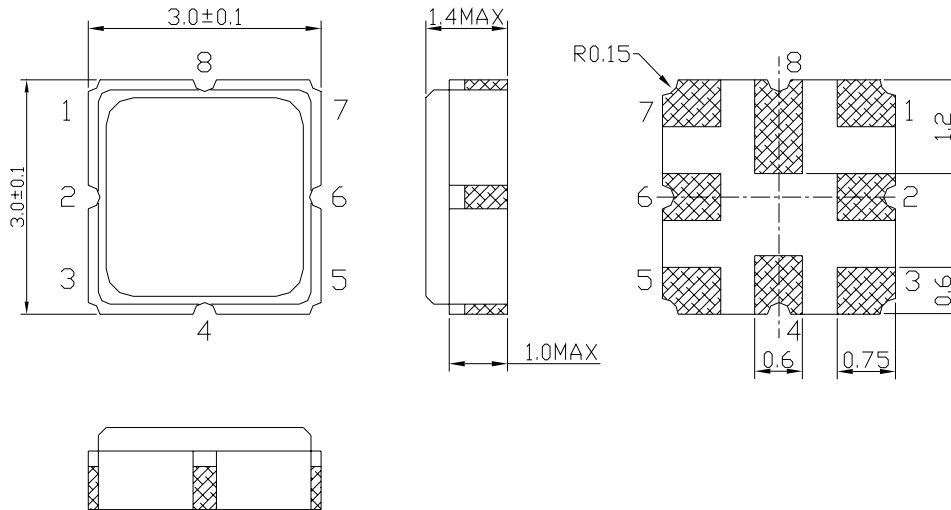
Item	Unit	Min.	Typ.	Max.
Center Frequency (fo)	MHz	--	1220.0	--
Insertion Loss 1216.0 ~ 1224.0 MHz	dB	--	3.4	5.3
Amplitude Ripple (p-p) 1216.0 ~ 1224.0 MHz	dB	--	0.6	1.8
Attenuation (Reference level from 0dB) 500.0 ~ 1129.0 MHz	dB	50.0	57.0	--
1129.0 ~ 1135.0 MHz	dB	50.0	57.0	--
1144.0 ~ 1152.0 MHz	dB	46.0	57.0	--
1132.0 MHz	dB	50.0	57.0	--
1148.0 MHz	dB	48.0	57.0	--
1176.0 MHz	dB	50.0	56.0	--
1184.0 MHz	dB	46.0	55.0	--
1290.0 ~ 2000.0 MHz	dB	50.0	55.0	--
Group Delay Ripple (p-p) (1216.0 ~	ns	--	12	--
Terminating Source Impedance	$\Omega$	--	200	--
Terminating Load Impedance	$\Omega$	--	200	--

## TEST CIRCUIT



**PACKAGE OUTLINE**

Unit: mm



**Pin Configuration**

Pin 1,2: Input

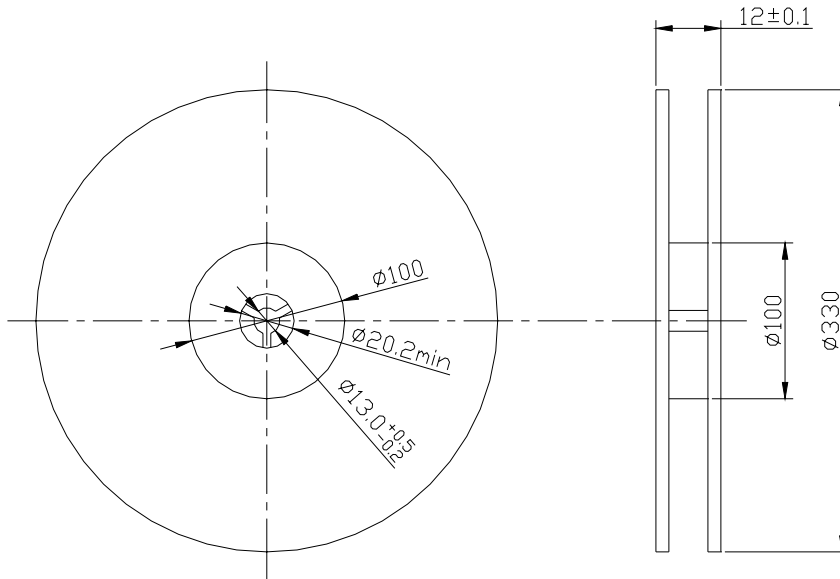
Pin 5,6: Output

Pin 3,4,7,8: Ground

ISO 9001  
 Registered

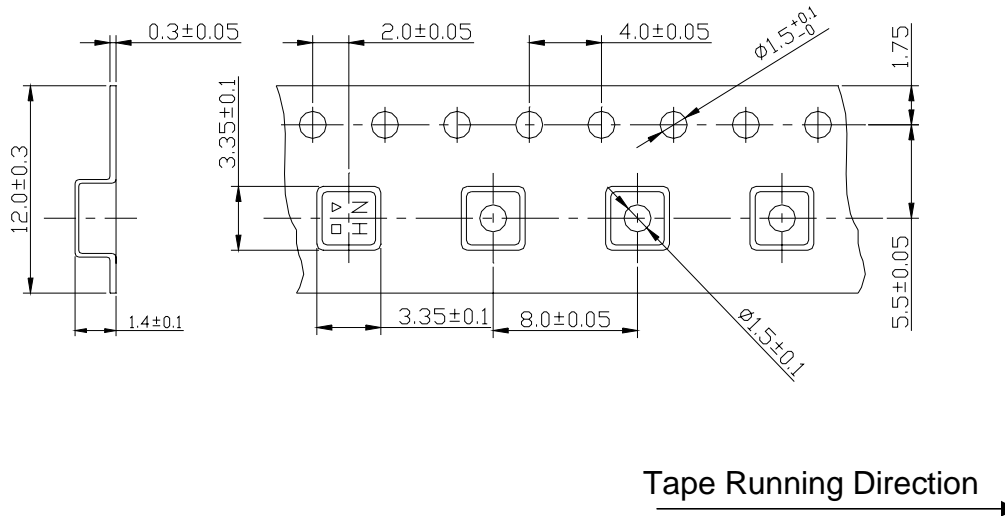


**Packing (Reel requirements)**



**Tape Dimensions**

**Units: mm**



© 2006 All rights reserved.