

### INTRODUCTION:

Adam Tech right angle PCB SCSI II / III connectors are a popular high density interface for many I/O applications requiring a miniature connector. Offered in 20, 26, 28, 40, 50, 68, 80, 100 and 120 positions they are a good choice for high density compact applications. They feature a flat leaf and fork contact design and a one touch, locking receptacle/plug combination. Adam Tech connectors are manufactured with precision stamped contacts offering a choice of contact plating and a wide selection of mating and mounting options. They are ideal for most compact electronic applications.

### FEATURES:

- Conforms to SCSI II standards
- One touch Locking Receptacle and Plug
- Blade contact with Blanked terminal
- Industry standard compatibility
- Durable metal shell design
- Precision formed bifurcated contacts
- Variety of Mating and mounting options

### MATING CONNECTORS:

Adam Tech SCSI II / III connectors and all industry standard SCSI II / III connectors.

### SPECIFICATIONS:

#### Material:

- Insulator: PBT, Glass filled, rated UL94V-0
- Insulator Color: Black
- Contacts: Phosphor Bronze
- Metal backshell: Zinc, Nickel Plated

#### Contact Plating:

- Gold Flash over nickel underplate on mating area, Tin over Copper underplate on tails

#### Electrical:

- Operating Voltage: 250V AC
- Current Rating: 1 Amps max.
- Contact Resistance: 35 mΩ max. initial
- Insulation Resistance: 500 MΩ min.
- Dielectric Withstanding Voltage: 500V AC for 1 minute

#### Mechanical:

- Insertion force: 5.3 oz max.
- Withdrawal force: 1.0 oz min.
- Durability: 100 cycles

#### Temperature Rating:

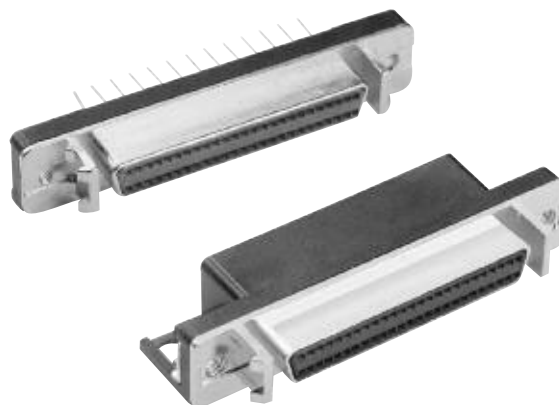
- Operating Temperature: -55°C ~ +105°C

### PACKAGING:

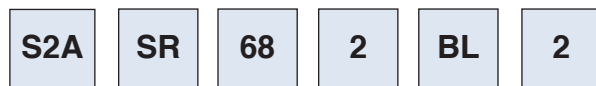
- Anti-ESD plastic trays

### APPROVALS AND CERTIFICATIONS:

- UL Recognized & CSA Certified,
- File no. E224053



### ORDERING INFORMATION



**SERIES INDICATOR**  
S2A = SCSI II/III  
.050"  
Connector

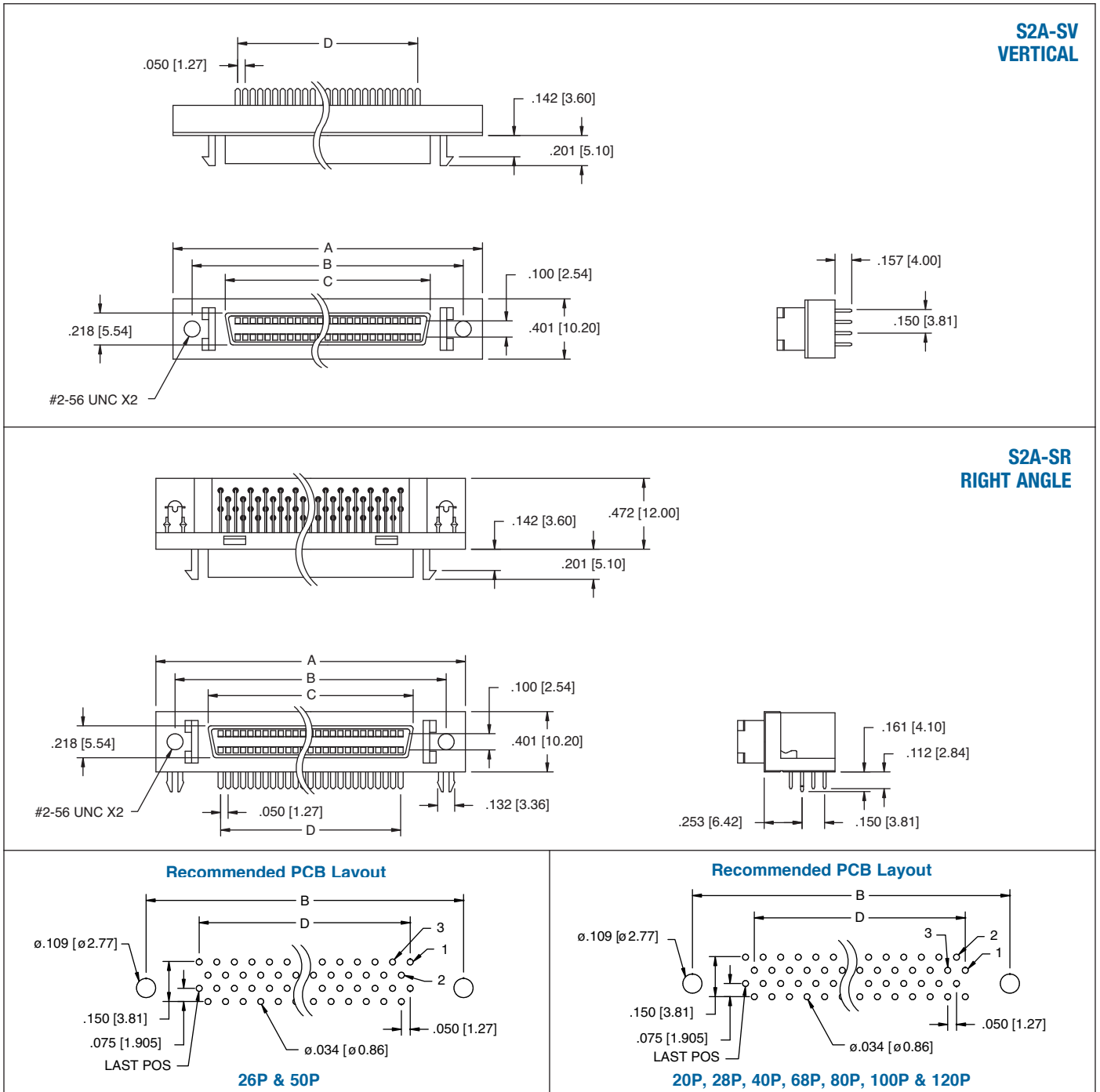
**MOUNTING ANGLE**  
SR = Socket,  
Right  
Angle  
Mount  
SV = Socket,  
Vertical  
Mount

**THREADED MOUNTING HOLES**  
1 = #4-40  
threaded  
holes  
2 = #2-56  
threaded  
holes  
3 = M2.6 thread  
holes

**BOARD MOUNTING OPTIONS**  
TFA = Flange with #4-40  
threaded holes  
TFB = Flange with #2-56  
threaded holes  
TFC = .125 Dia. thru-holes  
TFD = Flange with M2.6  
threaded holes  
BL = Board locks  
(Right angle only)

**MATING FACE MOUNTING OPTIONS**  
2 = Without latch blocks  
3 = With latch blocks

**POSITIONS**  
20, 26, 28, 40, 50, 60,  
68, 80, 100, 120



Unit: Inch / mm

PART NO. & POSITION	S2A-SR-20 S2A-SV-20	S2A-SR-26 S2A-SV-26	S2A-SR-28 S2A-SV-28	S2A-SR-40 S2A-SV-40	S2A-SR-50 S2A-SV-50	S2A-SR-68 S2A-SV-68	S2A-SR-80 S2A-SV-80	S2A-SR-100 S2A-SV-100	S2A-SR-120 S2A-SV-120
<b>A</b>	1.323 [33.60]	1.469 [37.30]	1.523 [38.68]	1.823 [46.30]	2.073 [52.65]	2.523 [64.08]	2.823 [71.70]	3.323 [84.40]	3.823 [97.10]
<b>B</b>	1.081 [27.45]	1.228 [31.20]	1.281 [32.53]	1.581 [40.15]	1.831 [46.50]	2.281 [57.93]	2.581 [65.55]	3.081 [78.25]	3.581 [90.95]
<b>C</b>	0.600 [15.25]	0.750 [19.05]	0.800 [20.33]	1.100 [27.95]	1.350 [34.30]	1.800 [45.73]	2.100 [53.35]	2.600 [66.05]	3.100 [78.75]
<b>D</b>	0.450 [11.43]	0.600 [15.24]	0.650 [16.51]	0.950 [24.13]	1.200 [30.48]	1.650 [41.91]	1.950 [49.53]	2.450 [62.23]	2.950 [74.93]