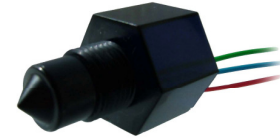


Optical Liquid Level Sensors D600HD Series



- Features:
- * 1/2" SAE Threaded Body
 - * Heavy Duty Style
 - * Wider range of options
 - * Wide range of Commercial, Industrial & Automotive applications.



Housing Style	HD600
	1/2" SAE-20 Thread ⁽¹⁾
Output Function	Digital (High or Low in Air) outputs
Repeatability	± 1mm
Hysteresis	1mm depending on liquid
Response time rising liquid	50µS
Response time falling liquid (ethanol)	< 1 second
Supply Voltage (V _s)	5 to 12Vdc or 10 to 28Vdc (see below)
Supply Current	15mA nominal
Sink / Source Current	250mA or 500mA max (see below)
Temperature range: operating	-25°C to +80°C or -40° to +125°C
Housing Material	Polysulphone UDEL 1700
Cable Length	200mm PTFE wires
Environmental	IP67 Rated
Thermal Testing	As per BS EN60068-2-33
Humidity	As per BS EN60068-2-30
Vibration	As per BS EN60068 Part S3: 1996
Mechanical Shock	As per BS EN60068-2-27 Part 2 Ea: 1987
Max. Pressure	7 bar

Order Codes:

1) O-ring supplied unassembled

D 6 * * H D * * * - 0 0 *

Temp Range

0: -25°C to +80°C
1: -40°C to +125°C

Supply Voltage

12: 5 to 16VDC
24: 10 to 28VDC

Sink / Source Current

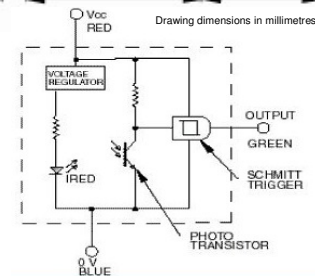
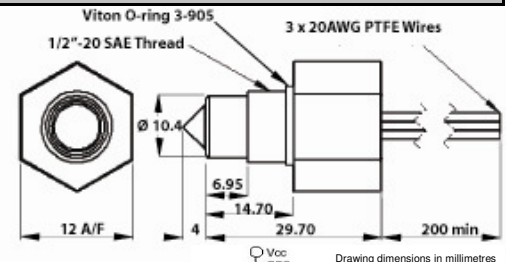
0: 250mA max
5: 500mA max

Output Circuit

- 1: N-Channel Open Drain with flyback diode*
 - 2: Digital Output (Sink Current only)
 - 3: N-Channel Open Drain
 - 4: P-Channel Open Drain
 - 5: N & P Channel Push-Pull Output
- * For use with inductive loads

Output Polarity

L: Output Low in Air
H: Output High in Air



**American
Electronic
Components, Inc.**

© American Electronic Components Inc 2008

American Electronic Components Inc.,
1101 Lafayette Street, Elkhart, Indiana. USA
Tel: +1-574-295-6330 Fax: +1-574-293-8013
Email: sales@aecensors.com
<http://www.aecensors.com>