

Optical Liquid Level Sensors D600D Series

DURAKOOL

- Features:**
- * 1/2" SAE Threaded Body
 - * Low cost
 - * Compact size
 - * High reliability
 - * Wide range of commercial and industrial applications.



| Housing Style | D600 |
|--|--|
| | 1/2" SAE-20 Thread ⁽¹⁾ |
| Output Function | Digital (High or Low in Air) outputs |
| Repeatability | ± 1mm |
| Hysteresis | 1mm depending on liquid |
| Response time rising liquid | 50µS |
| Response time falling liquid (ethanol) | < 1 second |
| Supply Voltage (V _s) | 5 to 12Vdc |
| Supply Current | 15mA nominal |
| Sink / Source Current | 15mA |
| Temperature range: operating / (storage) | -25°C to +80°C / (-30° to +85°C) |
| Housing Material | Polysulphone UDEL 1700 |
| Cable Length | 200mm PTFE wires |
| Environmental | IP67 Rated |
| Thermal Testing | As per BS EN60068-2-33 |
| Humidity | As per BS EN60068-2-30 |
| Vibration | As per BS EN60068 Part S3: 1996 |
| Mechanical Shock | As per BS EN60068-2-27 Part 2 Ea: 1987 |
| Max. Pressure | 7 bar |

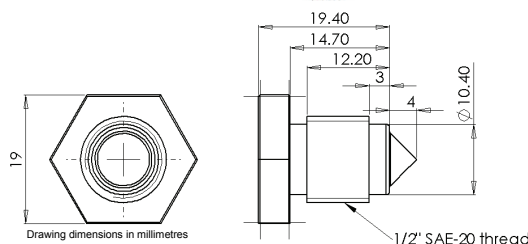
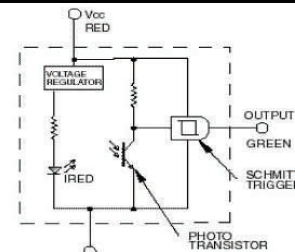
Order Codes:

High in Air Sensors: Output Voltage in Liquid < 1Vdc; Output Voltage in Air is within V_s - 0.5Vdc

3 Wire D600D3SH
4 Wire ⁽²⁾ D600D4SH

Low in Air Sensors: Output Voltage in Liquid is within V_s - 0.5VDC; Output Voltage in Air < 1Vdc

3 Wire D600D3LSH
4 Wire ⁽²⁾ D600D4LSH



- 1) "O" Ring supplied, unassembled.
- 2) In certain applications (when used in certain liquids or emulsions and in heavily condensing applications), it may be necessary to "tune" the sensor's operation using a 4th wire connected directly to the LED. This requires the installer to select a suitable current limiting resistor—contact factory for details.



© American Electronic Components Inc 2008

American Electronic Components Inc.,
1101 Lafayette Street, Elkhart, Indiana. USA
Tel: +1-574-295-6330 Fax: +1-574-293-8013
Email: sales@aecensors.com
<http://www.aecensors.com>