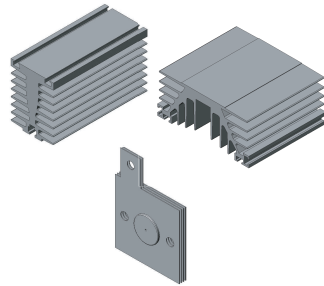


EXPANDED PRODUCT BRIEF - Power Semiconductor Accessories

Heatsinks

Part Number	Old Part Number	Weight Kg/m	Periphery mm	Area mm ²	Fig.	
XSF6xxxxAN	G Fin	8.1	1059	2979	WH1	
XSFGAxxxxAN	GA Fin	15.6	1682	5867	WH2	
XSFHxxxxAN	H Fin	12.7	1684	4655	WH3	
XSFTxxxxAN	T Fin	20	2065	7573	WH4	
XSFTBxxxxAN	TB Fin	29	2467	10905	WH5	
XSFTCxxxxAN	TC Fin	28	2544	10561	WH6	
SXFLPxxxxAN	LP100 Fin (40 Vane)	30	6620	11172	WH7	
SXF46xxxxAN	WS46 Fin	20	2822	7411	WH8	
SXF30xxxxAN	WS30 Copper Fin	Dimensions 125mm x 125mm x 4 vanes				WH9

Please refer to IXYS Selector Guide 2011-2012 Page O-26 for outline drawings



Accessories

Part number	Old Part Number	Accessory
XSGSCX13		Ilex Grease SCX13
XSL300C2WRP	U9900	300mm, Silicone Sleeved, White/Red, M4 Ring, Loose Leads
XSL1000C2WRP	U9734	1000mm, Silicone Sleeved, White/Red, M4 Ring, Loose Leads
XST1000M08P	PTFE1000M8	M8 PTFE TUBE X 1m LENGTH
XST1000M10P	PTFE1000M10	M10 PTFE TUBE X 1m LENGTH
XST1000M12P	PTFE1000M12	M12 PTFE TUBE X 1m LENGTH
XST1000M16P	PTFE1000M16	M16 PTFE TUBE X 1m LENGTH
L0001YC450XXX	n/a	30mm diameter poleface Insulator
L0001QC450XXX	n/a	43mm diameter poleface Insulator
L0001MC450XXX	n/a	56mm diameter poleface Insulator
L0001HC450XXX	n/a	68mm diameter poleface Insulator
L0001FC450XXX	n/a	87mm diameter poleface Insulator
L0001YC450XXX	n/a	100mm diameter poleface Insulator

Rods
Stand-offs



Certificate FM26085

All plastic components are UL recognised and meet the requirements of the European Union Directive 2002/95/EC covering the restricted use of certain hazardous substances in electrical and electronic equipment.

ISO 9000 2000 provides the standard against which all our products and services are measured.

WESTCODE
An IXYS Company

Contact us: Westcode Semiconductors Ltd
Langley Park Way
Chippenham SN15 1GE
United Kingdom
Tel: +44 (0)1249 444524
Fax: +44 (0)1249 659448
Email: wsl.sales@westcode.com

IXYS

IXYS Semiconductors GmbH
Edisonstr. 15
D-68623 Lampertheim
Germany
Tel: +49 (0) 6206 503-0
Fax: +49 (0) 6206 503627
Email: marcom@ixys.de

We are supported by a global network of local offices, representatives and distributors. Please visit our websites for further information.

www.ixys.com

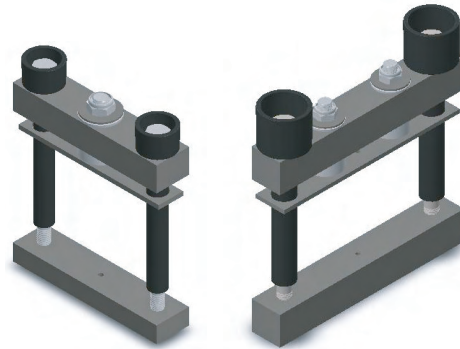
www.westcode.com

EXPANDED PRODUCT BRIEF

WESTCODE
An IXYS Company

Power Semiconductor Accessories
Clamps, Coolers and Heatsinks

May 2011 Issue 1



As part of our continuing commitment to meet our customers' demands, we offer a range of products to support our high power semiconductor devices and our silicon assembly business.

- Bar Clamps
- Box Clamps
- Coolers
- Heatsinks
- Insulator Capsules
- PTFE tube
- Leads
- Mounting Grease

New! Bar Clamps - Summary Table

Part Number	Outline Refs "xxx" mm	Rod Size & Length mm	Insulator Size & Length mm	Fixing Centres mm	Pole Face mm	T _{max}	Ave. Capsule Height			Device Type	Clamp Forces	Outline
							14mm	26mm	35mm			
KSX1500DA07Exxx	38	27.43	M8 x 90	M8 x 60	89		#			Wspacks PCT	108N to 209N	VCS1
KSX1500DA07Exxx	76	62.48	M8 x 130	M8 x 95	89	32	190			Wspacks Diodes		
KSX1500DA07Exxx	101	87.63	M8 x 160	M8 x 120	89							VCS2
KSX2000DA07Exxx	38	25.9	M8 x 95	M8 x 60	89		#			GTO	138N to 179N	
KSX2000DA07Exxx	76	60.96	M8 x 130	M8 x 95	89	38	190	#	#	6.5kV MVT	278N to 348N	VCS3
KSX3000DA07Exxx	101	85.85	M8 x 160	M8 x 120	89		#	#	#	Diodes & Wspacks	168N to 209N	
KSX3000DA07Exxx	38	26.16	M8 x 100	M8 x 65	89		#	#		Wspack PCTs	278N to 348N	VCS4
KSX3000DA07Exxx	76	56.13	M8 x 130	M8 x 100	89	50	190	#	#	MVT/DGT	278N to 348N	
KSX3000DA07Exxx	101	86.1	M8 x 160	M8 x 125	89		#	#	#	6.5kV MVT	278N to 348N	VCS5
KSX400DA07Exxx	38	24.63	M8 x 100	M8 x 65	89		#			Wspack RDs	258N to 318N	
KSX400DA07Exxx	76	64.51	M8 x 140	M8 x 105	89	50	190	#		Diodes		VCS6
KSX400DA07Exxx	101	89.66	M8 x 160	M8 x 130	89		#					
KSX380DA118Max	76	59.66	M10 x 150	M12 x 100	132	66	190			GTO	328N to 388N	VCS7
KSX380DA118Max	101	84.58	M10 x 180	M12 x 125	132		#					
KSX440DA118Max	76	62.99	M10 x 150	M12 x 105	132	68	190	#	#	Wspacks	368N to 448N	VCS8
KSX440DA118Max	101	87.88	M10 x 180	M12 x 130	132		#	#	#	6.5kV MVT	368N to 448N	
KSX600DA118Max	76	59.94	M10 x 150	M12 x 105	132	75	190			Products in Development, refer to Chippenham Factory	508N to 608N	VCS9
KSX600DA118Max	101	84.83	M10 x 180	M12 x 130	132		#	#	#			

Note: 1Kgf = 9.8 Newtons

Please refer to
Pages O-24 and O-25
of the
IXYS Selector Guide
2011-2012
for outline drawings

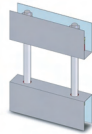
www.ixys.com

www.westcode.com

Bar Clamps

Type		Fixing Centres mm	Rod Size	Capsule Device			Outline No.	
Part Number	Old Part Number			Device Type	Mounting Surface Diameter mm	Nominal Thickness mm		T _J Max
XK0450DA056M	CMK450D56M	65	M8	DO-200AA/TO-200AB	19.0	13.8	190	WC1
XK0450DT056M	CMK450D156M							WC3
XK0450SA056M	CMK450S56M							WC5
XK0550DA056M	CMK550D56M	65	M8	GTO	29.5	16.0	190	WC4
XK0550DT056M	CMK550D156M							WC7
XK0550SA056M	CMK550S56M							WC8
XK0900DA056M	CMK900D56M	65	M8	Diode/Thyristor	25.1	14.6	190	WC6
XK0900DT056M	CMK900D156M							WC9
XK0900SA056M	CMK900S56M							WC10
XK0600DA074M	CMK600D74M	89	M10	Press-Pack IGBTs	47.0	27.0	190	WC11
XK0600DT074M	CMK600D174M							WC12
XK0600SA074M	CMK600S74M							WC13
XK1000DA074M	CMK1000D74M	89	M10	Press-Pack IGBTs	47.0	27.0	190	WC14
XK1000DT074M	CMK1000D174M							WC15
XK1000SA074M	CMK1000S74M							WC16
XK1100DA076M	CMK1100D76M	89	M10	DO-200AB/TO-200AC	34.0	26.2	190	WC17
XK1100DT076M	CMK1100D176M							WC18
XK1100SA076M	CMK1100S76M							WC19
XK1800DA076M	CMK1800D76M	89	M10	Wespack PCT	38.0	14.0	190	WC20
XK1800DT076M	CMK1800D176M							WC21
XK1800SA076M	CMK1800S76M							WC22
XK2100DA076M	CMK2100D76M	89	M10	GTO	47.0	27.0	190	WC23
XK2100DT076M	CMK2100D176M							WC24
XK2100SA076M	CMK2100S76M							WC25
XK2140DA076M	CMK2140D76M	89	M10	DO-200/Thyristor	47.0	26.8	190	WC26
XK2140DT076M	CMK2140D176M							WC27
XK2140SA076M	CMK2140S76M							WC28
XK2700DA076M	CMK2700D76M	89	M10	Wespack PCT	50.0	14.0	190	WC29
XK2700DT076M	CMK2700D176M							WC30
XK2700SA076M	CMK2700S76M							WC31
XK2000DA114M	CMK2000D114M	132	M12	Press-Pack IGBTs	75.0	26.0	190	WC32
XK2000DT114M	CMK2000D114M							WC33
XK2000SA114M	CMK2000S114M							WC34
XK2500DA114M	CMK2500D114M	132	M12	Press-Pack IGBTs	75.0	26.0	190	WC35
XK2500DT114M	CMK2500D114M							WC36
XK2500SA114M	CMK2500S114M							WC37
XK2500DA116M	CMK2500D116M	132	M12	GTO	63.0	26.0	190	WC38
XK2500DT116M	CMK2500D116M							WC39
XK2500SA116M	CMK2500S116M							WC40
XK3000DA116M	CMK3000D116M	132	M12	DO-200AD/Thyristor	63.0	33.0	190	WC41
XK3000DT116M	CMK3000D116M							WC42
XK3000SA116M	CMK3000S116M							WC43
XK3500DA116M	CMK3500D116M	132	M12	GTO	75.0	26.0	190	WC44
XK3500DT116M	CMK3500D116M							WC45
XK3500SA116M	CMK3500S116M							WC46
XK4000DA116M	CMK4000D116M	132	M12	Diode/Thyristor	73.0	36.8	190	WC47
XK4000DT116M	CMK4000D116M							WC48
XK4000SA116M	CMK4000S116M							WC49
XK4000DA116M	CMK4000D116M	146	M16	GTO	75.0	26.0	190	WC50
XK4000DT116M	CMK4000D116M							WC51
XK4000SA116M	CMK4000S116M							WC52
XK5000DA128M	CMK5000D128M	146	M16	Diode/Thyristor	75.0	26.6	190	WC53
XK5000DT128M	CMK5000D128M							WC54
XK5000SA128M	CMK5000S128M							WC41
XK7000DA128M	CMK7000D128M	154	M12	Press-Pack IGBTs	85.1	26.0	125	WC42
XK7000DT128M	CMK7000D128M							WC43
XK7000SA128M	CMK7000S128M							WC44
XK3060DA140ML	CMK3060D140ML	180	M16	Thyristor	99.3	35.8	190	WC45
XK3060DT140ML	CMK3060D140ML							WC46
XK3060SA140ML	CMK3060S140ML							WC47
XK9000DA160M	CMK9000D160M	Refer to Chippenham Factory				190	125	WC45
XK6120DA180ML	CMK6120D180ML	196	M16	Press-Pack IGBTs	125.0	26.0	125	WC46
XK6120SA180ML	CMK6120S180ML							WC47

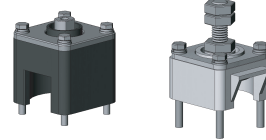
Please refer to pages O-16 to O-24 of the IXYS Selector Guide 2011-2012 for outline drawings and dimensions



Box Clamps

Type		Moulded Box Style		Fixing Centres mm	Rod Size	Capsule Device			Outline	
Part Number	Old Part Number	Injection	Compression			Device Type	Mounting Surface Diameter mm	Nominal Thickness mm		T _J Max
XK0450BA019M	CMK450B19M	yes	-	50 PCD	M5x50 Bolts	DO-200AA/TO-200AB	19.0	13.8	190	WC48
XK0450BB019M	CMK450B19M	-	yes	50 PCD	M5x50 Bolts	DO-200AA/TO-200AB	19.0	13.8	190	WC48
XK0450BA025M	CMK450B25M	yes	-	50 PCD	M5x50 Bolts	DO-200AA/TO-200AB	25.1	14.6	190	WC49
XK0450BB025M	CMK450B25M	-	yes	50 PCD	M5x50 Bolts	DO-200AA/TO-200AB	25.1	14.6	190	WC49
XK1500BA034M	CMK1500B34M	yes	-	70 PCD	M6x50 Bolts	DO-200AB/TO-200AC	34.0	26.2	190	WC50

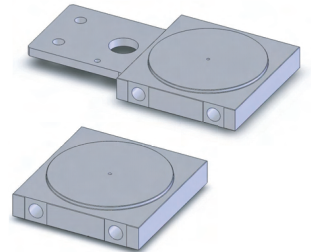
Note: 1Kgf = 9.8 Newtons



Please refer to pages O-23 and O-24 of the IXYS Selector Guide 2011-2012 for outline drawings and dimensions.

Coolers

Part Number	Old Part Number	Weight Kg	Cooler Thickness mm	Busbar Thickness mm	Material	Outline
XW076NC16B	LK	0.612	16	6.4	Cu	WCL1
XW076NC16BT	LK					
XW076NC16C	LK					
XW076NC16CT	LK					
XW076NC16A	LKA	0.418	16	n/a	Cu	WCL2
XW076NC16R	WS71.1	0.581	16	6.35	Cu	WCL12
XW076NC16W	WS71.2	0.400	n/a	n/a	Cu	WCL13
XW116ZC20B	LKD	1.750	20	10	Cu	WCL5
XW116ZC20C	LKD	2.120				
XW116ZC20R	WS72.1	1.472				
XW116ZC20W	WS72.2	1.119				
XW116ZC20A	LKC	1.300	20	n/a	Cu	WCL4
XW127EN15A	WS27	0.375	15	n/a	Al N	WCL8
XW127EN15B	WS27	0.375	15	n/a	Al N	WCL8
XW127EC25A	n/a	1.650	25	8	Cu	WCL16
XW127EC25B	n/a	2.200				
XW127EA25A	n/a	0.500				
XW127EA25B	n/a	0.650	25	8	Al	WCL17
XW160FC25B	LKE	4.520	25	10	Cu	WCL6
XW160FC25A	LKF	3.620	25	n/a	Cu	WCL7
XW180GC34A	WS70	4.920	34	N/A	Cu	WCL11
XW180GC34B	n/a	5.950				
XW180GA34A	n/a	1.500				
XW180GA34B	n/a	1.800				
XW180GN25A	n/a	0.920	25	N/A	Al N	WCL18
XW270QA25A	WS65	2.941	25	n/a	Al	WCL9



Please refer to pages O-27 and O-28 of the IXYS Selector Guide 2011-2012 for outline drawings and dimensions.

Part Number	Cooler Accessories
XSNM12H10S	M12 Cooler Connection, 10mm Hose & Stainless Steel material
XSNM12H12S	M12 Cooler Connection, 12mm Hose & Stainless Steel material
XSNM10H15P	M10 Cooler Connection, 15mm Hose & Plastic Material

