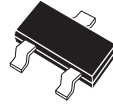


CMPS5061
 CMPS5062
 CMPS5063
 CMPS5064

**SURFACE MOUNT
 SILICON CONTROLLED RECTIFIER**



SOT-23 CASE

CentralTM Semiconductor Corp.

DESCRIPTION:

The CENTRAL SEMICONDUCTOR CMPS5061 Series types are epoxy molded PNP Silicon Controlled Rectifiers manufactured in an SOT-23 case, designed for control systems and sensing circuit applications.

MARKING CODES: CMPS5061: P2A
 CMPS5062: P2B
 CMPS5063: P2C
 CMPS5064: P2D

MAXIMUM RATINGS: (T_A=25°C)

	SYMBOL	CMPS5061	CMPS5062	CMPS5063	CMPS5064	UNITS
Peak Repetitive Off-State Voltage	V _{DRM}	100	200	300	400	V
Peak Repetitive Reverse Voltage	V _{RRM}	100	200	300	400	V
RMS On-State Current	I _{T(RMS)}			0.8		A
Average On-State Current (T _C =67°C)	I _{T(AV)}			0.51		A
Power Dissipation	P _D			350		mW
Operating and Storage						
Junction Temperature	T _J , T _{stg}		-65 to +150			°C
Thermal Resistance	θ _{JA}		357			°C/W

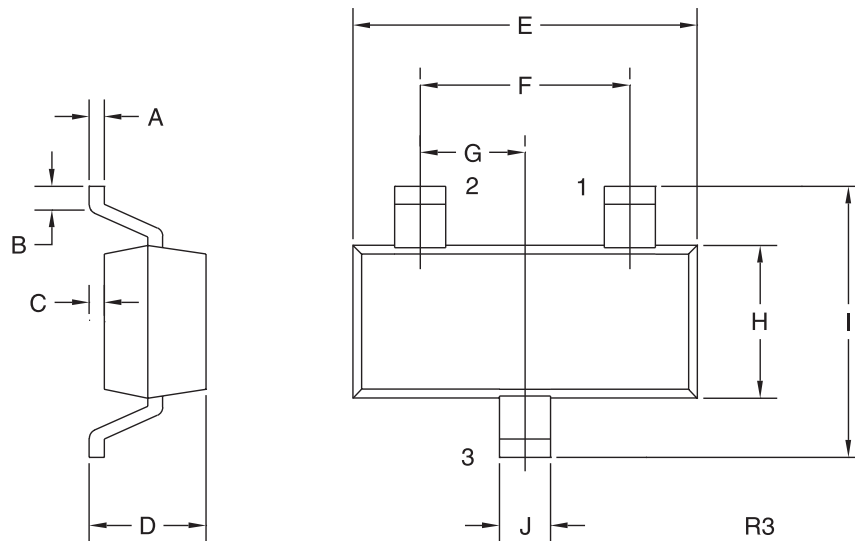
ELECTRICAL CHARACTERISTICS: (T_A=25°C unless otherwise noted)

SYMBOL	TEST CONDITIONS	CMPS5061		CMPS5062		CMPS5063		CMPS5064		UNITS
		MIN	MAX	MIN	MAX	MIN	MAX	MIN	MAX	
I _{DRM}	V _D =Rated V _{DRM} , R _{GK} =1KΩ		1.0		1.0		1.0		1.0	μA
I _{RRM}	V _D =Rated V _{DRM} , R _{GK} =1KΩ		1.0		1.0		1.0		1.0	μA
I _{DRM}	V _D =Rated V _{DRM} , R _{GK} =1KΩ, T _C =125°C		50		50		50		50	μA
I _{RRM}	V _D =Rated V _{DRM} , R _{GK} =1KΩ, T _C =125°C		50		50		50		50	μA
V _T	I _T =1.2A		1.7		1.7		1.7		1.7	V
I _{GT}	V _D =7.0V, R _L =100Ω, R _{GK} =1KΩ		200		200		200		200	μA
V _{GT}	V _D =7.0V, R _L =100Ω, R _{GK} =1KΩ		0.8		0.8		0.8		0.8	V
V _{GD}	V _D = Rated V _{DRM} , R _L =100Ω, T _C =125°C	0.1		0.1		0.1		0.1		V
I _H	V _D =7.0, R _{GK} =1KΩ		5.0		5.0		5.0		5.0	mA
t _{ON}	V _D = Rated V _{DRM} , I _{GT} =1.0mA, R _{GK} =1.0Ω, di/dt=6.0A/μs		2.8 TYP		2.8 TYP		2.8 TYP		2.8 TYP	μs

R7 (13-November 2002)

**SURFACE MOUNT
SILICON CONTROLLED RECTIFIER**

MECHANICAL OUTLINE - SOT-23



LEAD CODE:

- 1) CATHODE
- 2) GATE
- 3) ANODE

MARKING CODES:

- CMPS5061: P2A
- CMPS5062: P2B
- CMPS5063: P2C
- CMPS5064: P2D

SYMBOL	DIMENSIONS			
	INCHES		MILLIMETERS	
	MIN	MAX	MIN	MAX
A	0.003	0.007	0.08	0.18
B	0.006	-	0.15	-
C	-	0.005	-	0.13
D	0.035	0.043	0.89	1.09
E	0.110	0.120	2.80	3.05
F	0.075		1.90	
G	0.037		0.95	
H	0.047	0.055	1.19	1.40
I	0.083	0.098	2.10	2.49
J	0.014	0.020	0.35	0.50

SOT-23 (REV: R3)

R7 (13-November 2002)