



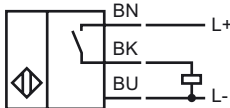
## Model Number

MB60-12GM50-E2

## Features

- Sensing range 60 mm based on DM60-31-15 magnet

## Connection



## Accessories

### BF 12

Mounting flange, 12 mm

### EXG-12

Quick mounting bracket with dead stop

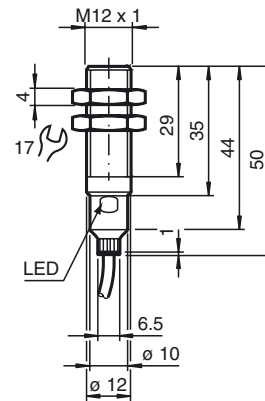
### DM 25-32-07

Permanent magnet for magnetic field sensors

### DM 60-31-15

Permanent magnet for magnetic field sensors

## Dimensions



## Technical Data

### General specifications

Switching element function		PNP	NO
Rated operating distance	$s_n$	60 mm	
Installation		embeddable in non-magnetic metal	
Output polarity		DC	
Assured operating distance	$s_a$	10 ... 48.6 mm	

### Nominal ratings

Operating voltage	$U_B$	10 ... 30 V
Switching frequency	$f$	0 ... 5000 Hz
Hysteresis	$H$	1 ... 10 %
Reverse polarity protected		reverse polarity protected
Short-circuit protection		pulsing
Voltage drop	$U_d$	$\leq 2.5$ V
Operating current	$I_L$	0 ... 200 mA
No-load supply current	$I_0$	$\leq 10$ mA
Indication of the switching state		LED, yellow

### Ambient conditions

Ambient temperature	-25 ... 75 °C (-13 ... 167 °F)
---------------------	--------------------------------

### Mechanical specifications

Connection type	cable PUR, 2 m
Core cross-section	0.34 mm <sup>2</sup>
Housing material	Stainless steel 1.4404 / AISI 316L
Sensing face	PBT
Protection degree	IP67

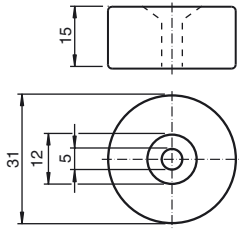
### Compliance with standards and directives

Standard conformity	
Standards	EN 60947-5-2:2007 IEC 60947-5-2:2007

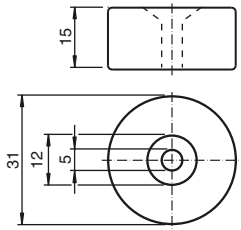
### Approvals and certificates

Protection class	II
UL approval	cULus Listed, General Purpose
CSA approval	cCSAus Listed, General Purpose
CCC approval	Products with a maximum operating voltage of $\leq 36$ V do not bear a CCC marking because they do not require approval.

Magnet DM 60-31-15



Magnet DM 60-31-15



Release date: 2011-08-05 12:29 Date of issue: 2011-08-05 218382\_eng.xml