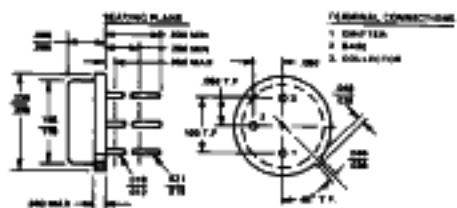


COLLECTOR CURRENT = 10 AMPS NPN TYPES—Continued

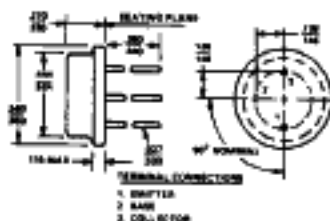
| Device No | Case | VCBO Volts | VCEO (sus) Volts | VEBO Volts | h _{FE} | | VCE | IC | VCE (sat) | VBE (sat) | @ IC | @ IB | θ _{IC} °C/W | F _t MHz |
|-----------------|----------|---------------|---------------------|---------------|-----------------|-----|-----|-----|-----------|-----------|------|------|-------------------------|-----------------------|
| | | | | | Min | Max | | | | | | | | |
| 2N3920 | TO-3 | 120 | 60 | 6 | 100 | 300 | 2 | 2 | 1.2 | 1.8 | 10 | 1 | 1.2 | 80 |
| 2N4070 | TO-3 | 120 | 100 | 8 | 40 | 120 | 5 | 5 | .6 | 1.5 | 5 | .5 | 1.5 | 20 |
| 2N4071 | TO-3 | 200 | 150 | 8 | 40 | 120 | 5 | 5 | .8 | 1.5 | 5 | .5 | 1.5 | 20 |
| 2N4150 | TO-5 | 100 | 80 | 5 | 40 | 120 | 5 | 5 | .6 | 1.5 | 5 | .5 | 25 | 60 |
| JAN 2N4150 | TO-5 | 100 | 80 | 5 | 40 | 120 | 5 | 5 | .8 | 1.5 | 5 | .5 | 25 | 60 |
| JTX * 2N4150 | TO-5 | 100 | 80 | 5 | 40 | 120 | 5 | 5 | .6 | 1.5 | 5 | .5 | 25 | 60 |
| 2N4301 | TO-61 | 100 | 80 | 8 | 30 | 120 | 4 | 5 | 1 | 1.2 | 10 | 1.3 | 2 | 40 |
| 2N4347 | TO-3 | 140 | 120 | 7 | 15 | 60 | 4 | 2 | 2 | 3 | 5 | .63 | 1.75 | 1 |
| 2N4348 | TO-3 | 140 | 120 | 7 | 15 | 80 | 4 | 5 | 1.4 | 2.2 | 5 | .5 | 1.6 | 1 |
| 2N5006 | TO-61/1 | 100 | 80 | 6 | 30 | 90 | 5 | 5 | .9 | 1.8 | 5 | .5 | .2 | 40 |
| 2N5008 | TO-61/1 | 100 | 80 | 6 | 70 | 200 | 5 | 5 | .9 | 1.8 | 5 | .5 | .2 | 40 |
| 2N5048 | TO-61 | 120 | 100 | 14 | 15 | 60 | 4 | 10 | 2 | 3 | 10 | 1 | 1.5 | 10 |
| 2N5049 | TO-61 | 80 | 50 | 14 | 15 | 60 | 4 | 10 | 2.5 | 3 | 10 | 1 | 1.5 | 10 |
| 2N5083 | TO-111/1 | 120 | 80 | 6 | 40 | 120 | 2 | 2 | .5 | 1.3 | 5 | .5 | 3.33 | 50 |
| 2N5084 | TO-111/1 | 120 | 60 | 6 | 100 | 300 | 2 | 2 | .5 | 1.3 | 5 | .5 | 3.33 | 50 |
| 2N5085 | TO-111/1 | 150 | 80 | 6 | 40 | 120 | 2 | 2 | .5 | 1.3 | 5 | .5 | 3.33 | 50 |
| 2N5152 | TO-5 | 100 | 80 | 6 | 30 | 90 | 5 | 2.5 | 1.5 | 2.2 | 5 | .5 | 25 | 60 |
| 2N5154 | TO-5 | 100 | 80 | 6 | 70 | 200 | 5 | 2.5 | 1.5 | 2.2 | 5 | .5 | 25 | 70 |
| 2N5218 | TO-61 | 220 | 200 | 8 | 15 | 120 | 5 | 5 | .5 | 1.2 | 2 | .2 | 2 | 60 |
| 2N5237 | TO-5 | 150 | 120 | 5 | 40 | 120 | 5 | 5 | .6 | 1.5 | 5 | .5 | 20 | 60 |
| JAN 2N5237 | TO-5 | 150 | 120 | 5 | 40 | 120 | 5 | 5 | .6 | 1.5 | 5 | .5 | 20 | 60 |
| JTX * 2N5237 | TO-5 | 150 | 120 | 5 | 40 | 120 | 5 | 5 | .6 | 1.5 | 5 | .5 | 20 | 60 |
| 2N5238 | TO-5 | 200 | 170 | 5 | 40 | 120 | 5 | 5 | .6 | 1.5 | 5 | .5 | 20 | 60 |
| 2N5264 | TO-3 | 300 | 180 | 6 | 30 | 300 | 2 | 1 | .65 | 1.4 | 5 | .5 | 1.2 | 50 |
| 2N5288 | TO-61/1 | 120 | 100 | 6 | 30 | 90 | 5 | 5 | .9 | 1.8 | 5 | .5 | 1.5 | 50 |
| 2N5289 | TO-61/1 | 120 | 100 | 6 | 70 | 200 | 5 | 5 | .9 | 1.8 | 5 | .5 | 1.5 | 50 |
| 2N5317 | TO-61/1 | 80 | 80 | 6 | 30 | 90 | 5 | 5 | .6 | 1.2 | 5 | .5 | 2 | 30 |
| 2N5319 | TO-61/1 | 100 | 100 | 6 | 30 | 90 | 5 | 5 | .6 | 1.2 | 5 | .5 | 2 | 30 |
| 2N5327 | TO-5 | 100 | 80 | 5 | 100 | 300 | 2 | 1 | .6 | 1.5 | 5 | .25 | 20 | 80 |
| 2N5328 | TO-111/1 | 100 | 80 | 5 | 50 | 150 | 5 | 5 | .6 | 1.5 | 5 | .25 | 3.33 | 80 |
| 2N5540 | TO-61 | 325 | 300 | 8 | 20 | 60 | 5 | 5 | 2.5 | 2.5 | 10 | 2 | 2 | 20 |
| 2N5542 | TO-61 | 175 | 130 | 8 | 30 | 90 | 5 | 5 | 2.5 | 2.5 | 10 | 1 | 2 | 20 |
| 2N5552 | TO-5 | 120 | 80 | 7 | 50 | 150 | 5 | 5 | .5 | 1.3 | 5 | .5 | 25 | 50 |
| 2N5559 | TO-3 | 150 | 120 | 7 | 12 | 60 | 2 | 4 | .75 | 1.5 | 4 | .4 | 1 | 1 |
| 2N5622 | TO-3 | 80 | 60 | 6 | 70 | 200 | 5 | 5 | 1.5 | 2.2 | 10 | 1 | 1.5 | 40 |
| 2N5624 | TO-3 | 100 | 80 | 6 | 30 | 90 | 5 | 5 | 1.5 | 2.2 | 10 | 1 | 1.5 | 40 |
| 2N5626 | TO-3 | 100 | 80 | 6 | 70 | 200 | 5 | 5 | 1.5 | 2.2 | 10 | 1 | 1.5 | 40 |
| 2N5628 | TO-3 | 120 | 100 | 6 | 30 | 90 | 5 | 5 | 1.5 | 2.2 | 10 | 1 | 1.5 | 40 |
| 2N5632 | TO-3 | 100 | 100 | 7 | 25 | 100 | 2 | 5 | 1 | 2 | 7.5 | .75 | 1.2 | 1 |
| 2N5633 | TO-3 | 120 | 120 | 7 | 20 | 80 | 2 | 5 | 1 | 2 | 7.5 | .75 | 1.2 | 1 |
| 2N5634 | TO-3 | 140 | 140 | 7 | 15 | 60 | 2 | 5 | 1 | 2 | 7.5 | .75 | 1.2 | 1 |
| 2N5730 | TO-111/1 | 100 | 80 | 5 | 30 | 30 | 2 | 2 | 1.2 | 1.5 | 5 | .5 | 3.33 | 60 |
| 2N5758 | TO-3 | 100 | 100 | 7 | 25 | 100 | 2 | 3 | 1 | 1.5 | 3 | .9 | 1.2 | 1 |
| 2N5759 | TO-3 | 120 | 120 | 7 | 20 | 80 | 2 | 3 | 1 | 1.5 | 3 | .3 | 1.2 | 1 |
| 2N5760 | TO-3 | 140 | 140 | 7 | 15 | 80 | 2 | 3 | 1 | 1.5 | 3 | .3 | 1.2 | 1 |
| 2N5854 | TO-61/1 | 100 | 80 | 6 | 30 | 90 | 5 | 5 | .9 | 1.8 | 5 | .5 | 1.5 | 20 |
| 2N6128 | TO-61/1 | 100 | 80 | 6 | 30 | 120 | 5 | 5 | .9 | 1.8 | 5 | .5 | 1.5 | 40 |
| 2N6232 | TO-5 | 140 | 100 | 7 | 25 | 100 | 2 | 5 | .7 | 1.4 | 5 | .5 | 25 | 50 |

* (JTXV)

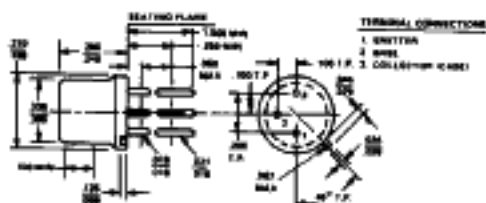
PHYSICAL DIMENSIONS - PACKAGES



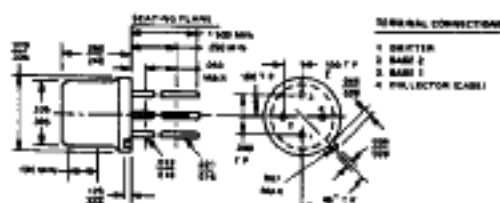
TO-46



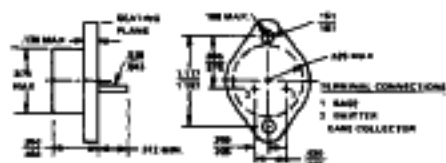
TO-8



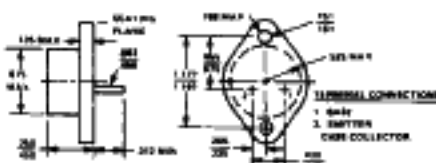
TO-5



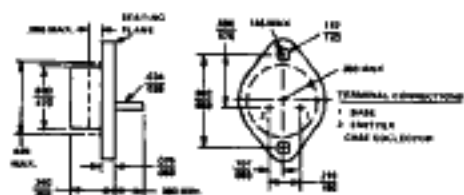
TO-33



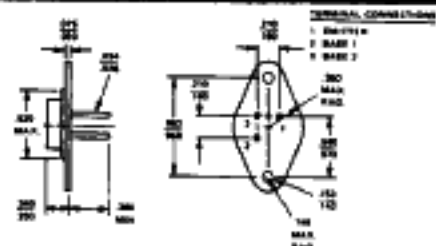
TO-3



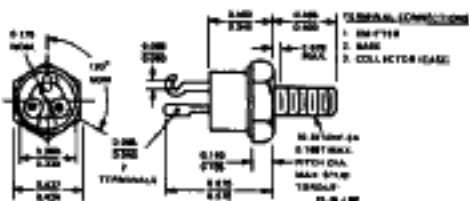
TO-3 (60 mil pins)



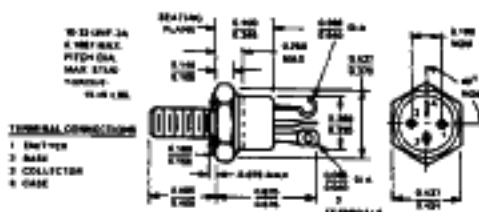
TO-66



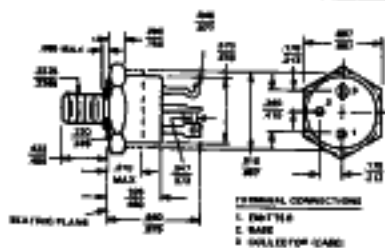
3 PIN TO-66



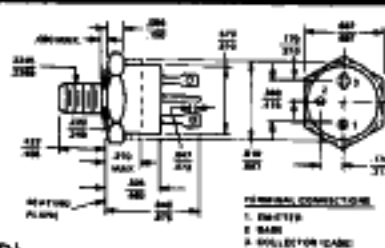
TO-111



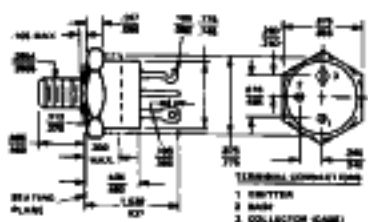
TO-111 (ISOLATED)



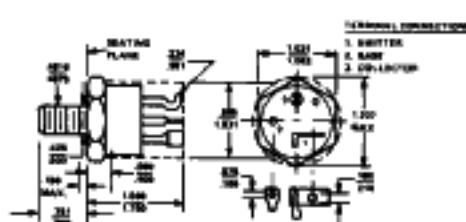
TO-61



TO-61 (ISOLATED)



TO-63



TO-114