

2SB1553

Silicon PNP epitaxial planar type

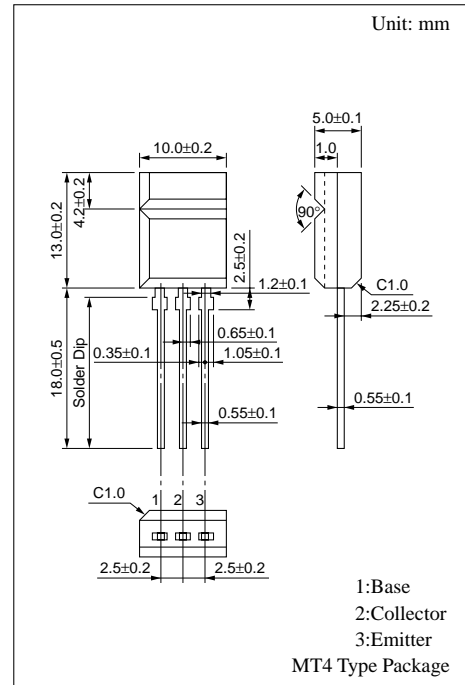
For power amplification

■ Features

- High forward current transfer ratio h_{FE}
- Satisfactory linearity of forward current transfer ratio h_{FE}
- Allowing automatic insertion with radial taping

■ Absolute Maximum Ratings ($T_C=25^\circ C$)

Parameter	Symbol	Ratings	Unit
Collector to base voltage	V_{CBO}	-60	V
Collector to emitter voltage	V_{CEO}	-60	V
Emitter to base voltage	V_{EBO}	-6	V
Peak collector current	I_{CP}	-6	A
Collector current	I_C	-3	A
Base current	I_B	-1	A
Collector power dissipation	P_C	$T_C=25^\circ C$	15
		$T_a=25^\circ C$	2
Junction temperature	T_j	150	$^\circ C$
Storage temperature	T_{stg}	-55 to +150	$^\circ C$



■ Electrical Characteristics ($T_C=25^\circ C$)

Parameter	Symbol	Conditions	min	typ	max	Unit
Collector cutoff current	I_{CBO}	$V_{CB} = -60V, I_E = 0$			-100	μA
	I_{CEO}	$V_{CE} = -40V, I_B = 0$			-100	μA
Emitter cutoff current	I_{EBO}	$V_{EB} = -6V, I_C = 0$			-100	μA
Collector to emitter voltage	V_{CEO}	$I_C = -25mA, I_B = 0$	-60			V
Forward current transfer ratio	h_{FE}^*	$V_{CE} = -4V, I_C = -0.5A$	300		700	
Collector to emitter saturation voltage	$V_{CE(sat)}$	$I_C = -2A, I_B = -0.05A$			-1	V
Transition frequency	f_T	$V_{CE} = -12V, I_C = -0.2A, f = 10MHz$		30		MHz

* h_{FE} Rank classification

Rank	Q	P
h_{FE}	300 to 500	400 to 700

