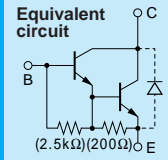


Darlington

2SD1769

Equivalent circuit



Silicon NPN Triple Diffused Planar Transistor

Application : Driver for Solenoid, Relay and Motor, Series Regulator, and General Purpose

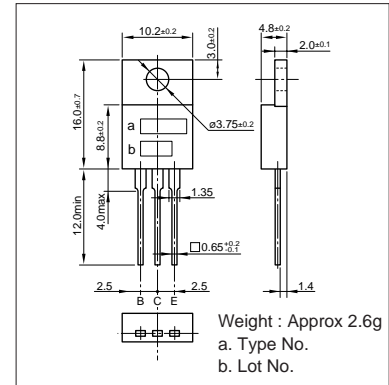
Absolute maximum ratings (Ta=25°C)

Symbol	2SD1769	Unit
V _{CB0}	120	V
V _{CE0}	120	V
V _{EBO}	6	V
I _c	6(Pulse10)	A
I _B	1	A
P _c	50(Tc=25°C)	W
T _j	150	°C
T _{stg}	-55 to +150	°C

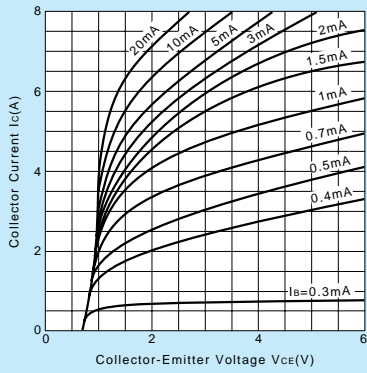
Electrical Characteristics (Ta=25°C)

Symbol	Conditions	2SD1769	Unit
I _{CB0}	V _{CB} =120V	10max	μA
I _{EBO}	V _{EB} =6V	20max	mA
V _{(BR)CEO}	I _c =10mA	120min	V
h _{FE}	V _{CE} =2V, I _c =3A	2000min	
V _{CE(sat)}	I _c =3A, I _B =3mA	1.5max	V
V _{BE(sat)}	I _c =3A, I _B =3mA	2.0max	V
f _T	V _{CE} =12V, I _E =-0.2A	100typ	MHz
C _{OB}	V _{CB} =10V, f=1MHz	typ	pF

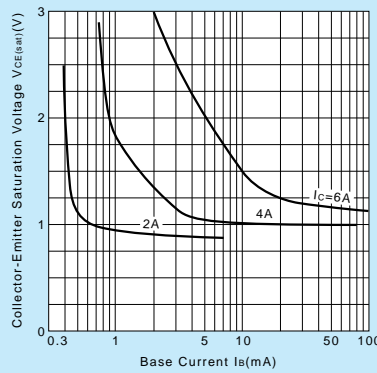
External Dimensions MT-25(TO220)



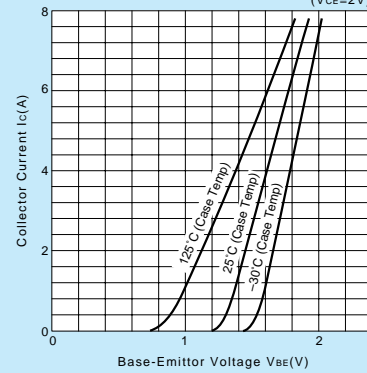
I_c-V_{CE} Characteristics (Typical)



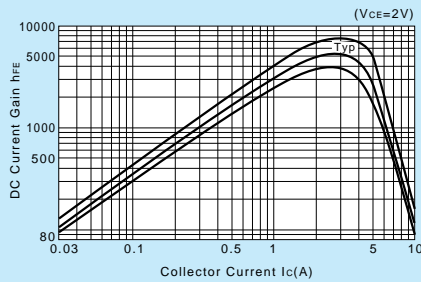
V_{CE(sat)}-I_B Characteristics (Typical)



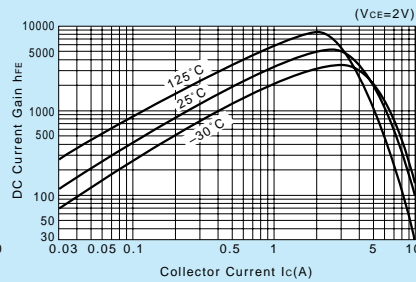
I_c-V_{BE} Temperature Characteristics (Typical)



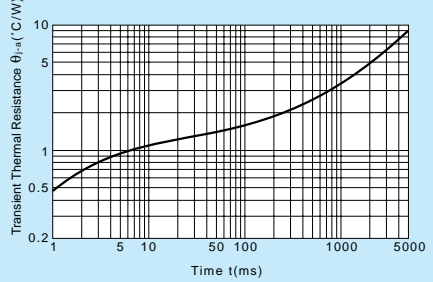
h_{FE}-I_c Characteristics (Typical)



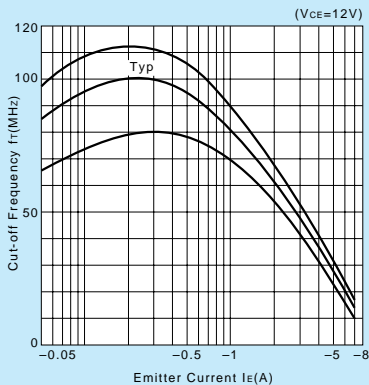
h_{FE}-I_c Temperature Characteristics (Typical)



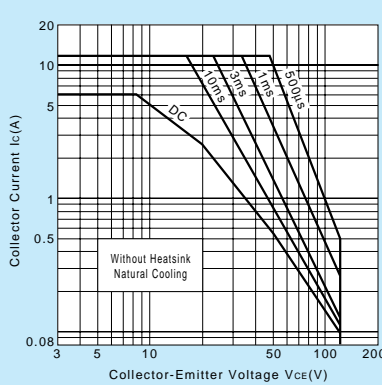
θ_{J-a}-t Characteristics



f_T-I_E Characteristics (Typical)



Safe Operating Area (Single Pulse)



P_c-T_a Derating

