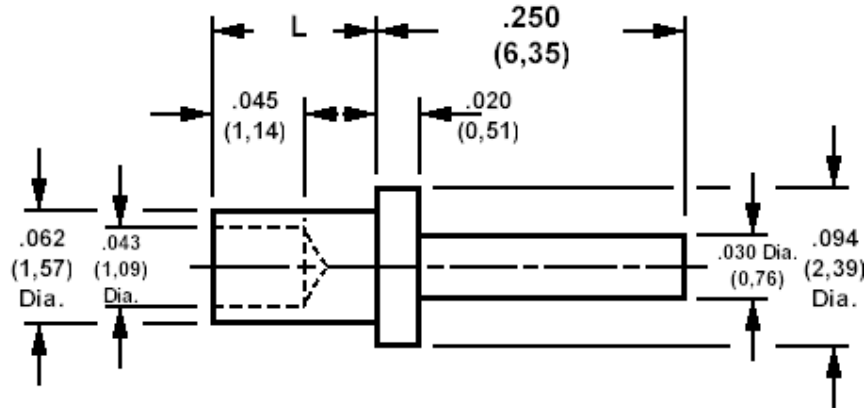


## 120-1372 Solder terminal, Pin type

Recommended mounting hole .067 (1,70), #51 drill



### How to order code

**120-1372-XX-YY-00**

Basic Part No XX = L dimension, YY = Plating Finish

DIMENSIONS (XX)			
Basic Part No	(XX)	L	Board Thickness
120-1372	-02	.084 (2,13)	.062 (1,59)

MATERIALS			
Component	Material	Finish (YY)	
Terminal	Brass	-03	-04
		Gold	Electro Tin

SWAGE TOOLING	
Recommended Swaging Tools:-	
Anvil	435-6458-01-00-00
Roll punch	435-6611-01-00-00
Flare Punch	435-6657-01-00-00