

Model P120
 12mm Rotary Potentiometer
 Single/Dual Unit
 Conductive Plastic Element
 100,000 Cycle Life
 Insulated shaft
 RoHS Compliant



MODEL STYLES

| | |
|------------------------------------|---------|
| Side Adjust, PCB pins, Single unit | P120K |
| Top Adjust, PCB pins, Single unit | P120PK |
| Top Adjust, PCB pins, Dual unit | P120KGP |
| Side Adjust, PCB pins, Dual unit | P120KGE |

ELECTRICAL¹

| | |
|-----------------------------------|---------------------|
| Resistance Range, Ohms | 1K- 1M |
| Standard Resistance Tolerance | ± 20% |
| Residual Resistance | 20 ohms max. |
| Input Voltage, maximum | 50 Vac max. |
| Power rating, Watts | 0.05w |
| Dielectric Strength | 300Vac, 1 minute |
| Insulation Resistance, Minimum | 100M ohms at 250Vdc |
| Sliding Noise | 100mV max. |
| Gang Error (Multi-ganged) | -40dB – 0dB, ±3dB |
| Actual Electrical Travel, Nominal | 260° |

MECHANICAL

| | |
|-------------------------|-------------------|
| Total Mechanical Travel | 300°± 10° |
| Static Stop Strength | 50 oz-in |
| Rotational Torque | 0.5 to 1.25 oz-in |

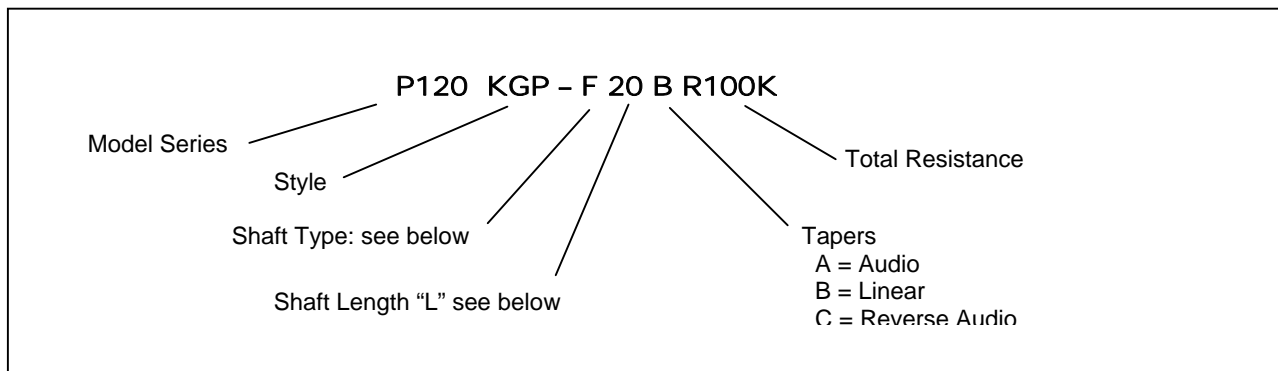
ENVIRONMENTAL

| | |
|-----------------------------|----------------|
| Operating Temperature Range | -20°C to +70°C |
| Rotational Life | 100,000 cycles |

¹ Specifications subject to change without notice.

Model P120

ORDERING INFORMATION²



Shaft Types

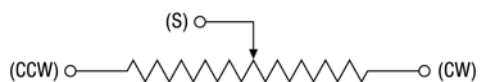
| | F-TYPE | | | | | | | | Y-TYPE | | | | | | | T-TYPE | | | | | | | | | |
|-------------|--------|----|----|----|----|----|----|----|--------|----|----|----|----|----|----|--------|----|----|----|----|----|----|----|--|--|
| | | | | | | | | | | | | | | | | | | | | | | | | | |
| TOP ADJUST | L | 15 | 17 | 20 | 25 | 30 | 35 | 40 | L | 15 | 20 | 25 | 30 | 35 | 40 | L | 15 | 20 | 25 | 30 | 35 | | | | |
| | T | 5 | 7 | 7 | 12 | 12 | 12 | 12 | T | 5 | 8 | 12 | 12 | 12 | 12 | T | 5 | 7 | 7 | 12 | 12 | | | | |
| SIDE ADJUST | L | 10 | 15 | 20 | 25 | 30 | | | L | 10 | 15 | 20 | 25 | 30 | | | | L | 10 | 15 | 20 | 25 | 30 | | |
| | T | 5 | 8 | 12 | 12 | 12 | | | T | 5 | 8 | 12 | 12 | 12 | | | | T | 5 | 7 | 7 | 12 | 12 | | |

STANDARD RESISTANCE VALUES, OHMS

1K 2K 5K 10K 20K 50K 100K 200K 500K 1MEG

CIRCUIT DIAGRAM

Unless otherwise specified

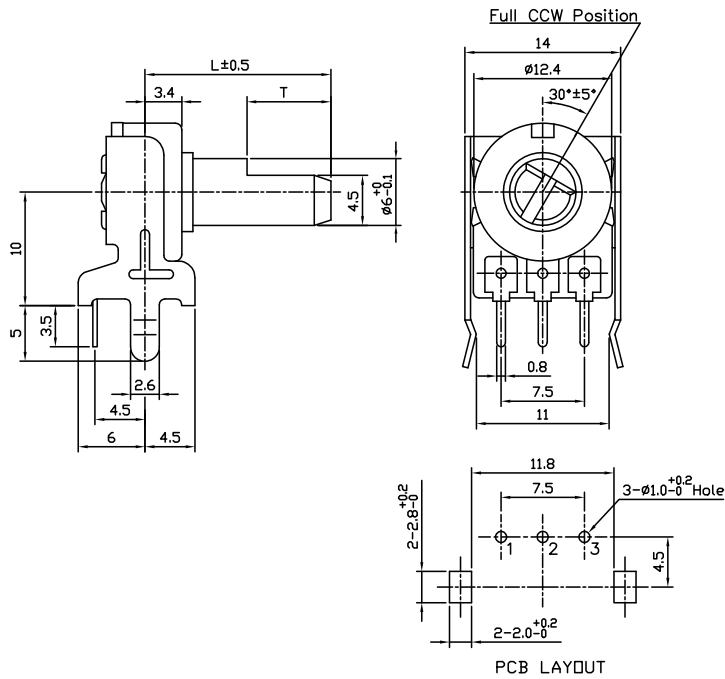


² Contact our customer service for custom designs and features.

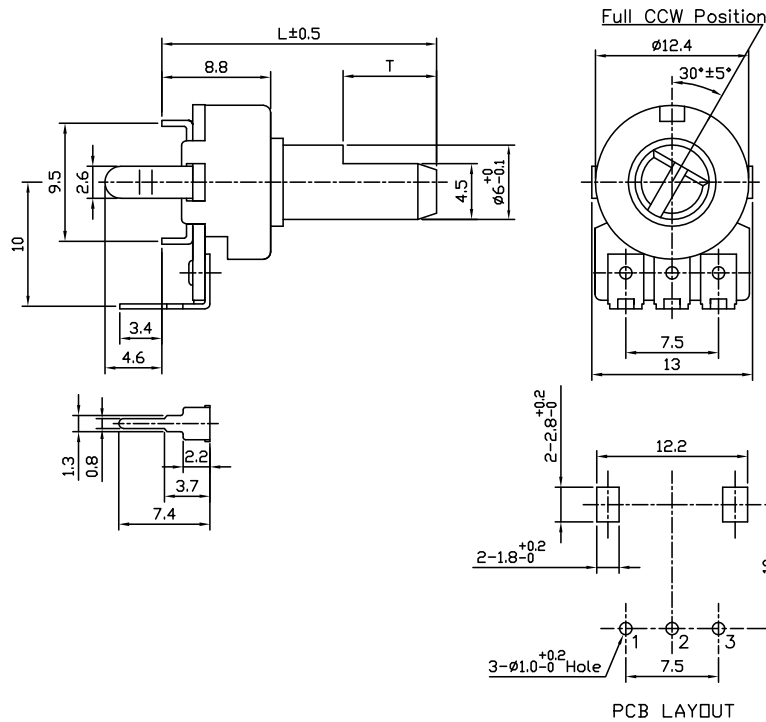
Model P120

OUTLINE DRAWING

Model P120K (Side Adjust, PCB pins, Single unit)

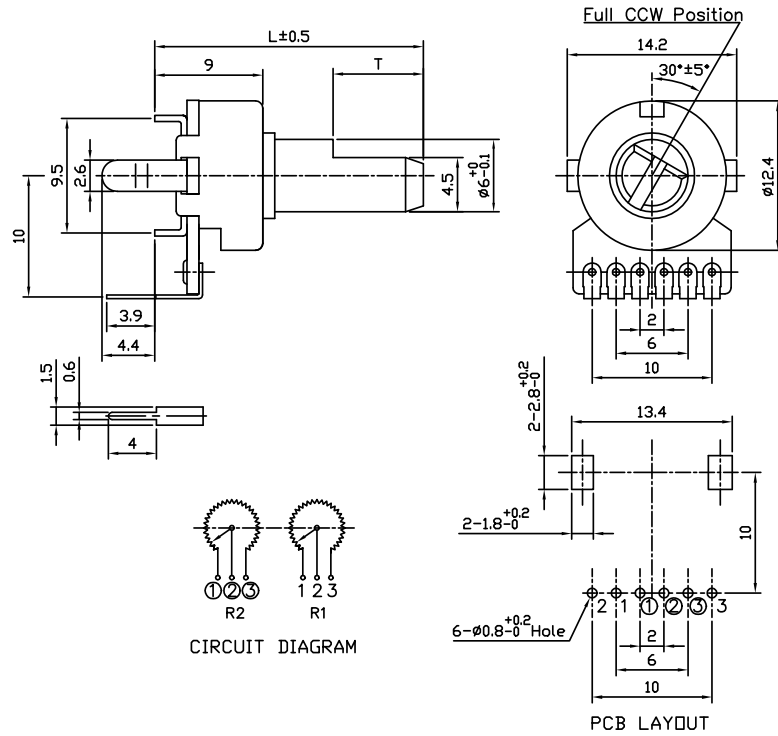


Model P120PK (Top Adjust, PCB pins, Single unit)



Model P120

Model P120KGP (Top Adjust, PCB pins, Dual unit)



Model P120KGE (Side Adjust, PCB pins, Dual unit)

