

# FPDK05SR8004PSV

3.0-5.5Vdc Input, 4A, 0.8-3.465Vdc Output

# Preliminary Data Sheet

The **DK** Series of non-isolated dc-dc converters provide high efficiency, cost effective, and complete Point-of-Load power solutions in very small and low profile SMD packages. Occupying a footprint of less than 2 cm<sup>2</sup> (0.3 in<sup>2</sup>), these are the converters of choice for a wide range of telecommunications, data communications, computing, industrial and consumer applications where board space, cost, height, efficiency, and reliable operation in elevated temperature environments are critical.

非絶縁型DC/DCコンバータの**DK**シリーズは、高効率、低価格、小型・低背のSMDパッケージで完全なPOL電源ソリューションを提供します。実装面積が2cm<sup>2</sup> (0.3 in<sup>2</sup>) 以下のこのコンバータは、基板スペース、費用、高さ、効率、及び高温環境での信頼性のある動作が重要な広範囲の電気通信、データ通信、コンピュータ、産業及びコンシューマ向けのアプリケーションに最適です。

The **FPDK05SR8004PSV** converter of the **DK** Series operates from a 3.0Vdc to 5.5Vdc input, and delivers 4A of output current at a tightly regulated programmable output voltage of 0.8Vdc to 3.465Vdc. The thermal performance of the **FPDK05SR8004PSV** is best-in-class: No derating is needed up to 85°C, under natural convection.

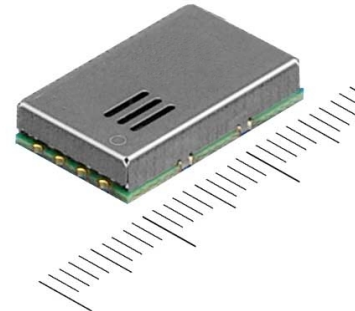
**DK** シリーズの**FPDK05SR8004PSV**は3.0V~5.5V入力で動作し、高い電圧精度でプログラム可能な出力電圧0.8V~3.465Vdcで、4Aの出力電流を供給します。**FPDK05SR8004PSV**の温度特性はクラス最高レベルです。自然対流で85°Cまで出力電流デレーティングを必要としません。

The leading edge performance of the **DK** Series products, and their extremely high quality and reliability are achieved through advanced circuit and thermal design techniques and FDK's state of the art in-house manufacturing processes and systems.

**DK** シリーズ製品の最先端の特性と非常に高い品質及び信頼性は、高度な回路設計及び温度設計技術とFDKの最先端の自社製造プロセス及びシステムによりもたらされます。

## Applications

- Telecommunications
  - Routers, Base Stations, Wireless  
テレコムシステム (ルータ、基地局、無線)
- Data Communications
  - Internet Routers, Processors  
データ通信 (インターネットルータ、プロセッサ)
- Computing
  - Servers, Workstations  
コンピュータ関係 (サーバー、ワークステーション)
- Industrial and Consumer
  - Navigation, POS systems, Office Equipment  
- Entertainment  
産業及びコンシューマ向け  
(ナビゲーション、POSシステム、オフィス機器、エンターテインメント)



FPDK05SR8004PSV

## Features

- RoHS compliant  
RoHS準拠
- Delivers up to 4A (13.9W)  
4A (13.9W)まで供給可能
- High efficiency, no heatsink required  
高効率-放熱器が不要
- No derating up to 85°C  
85°Cまでデレーティング不要
- Small size and low profile:0.657" x 0.402" x 0.134"  
小型、低背 (16.7 x 10.2 x 3.4mm)
- Programmable output voltage via external resistor  
外部接続の抵抗によりプログラム可能な出力電圧
- No minimum load required  
最小負荷は不要
- Start up into pre-biased output  
出力にプリバイアスがあっても起動可能
- Remote ON/OFF  
リモートON/OFF機能
- Auto-reset output over-current protection  
過電流保護機能: 自動復帰
- Auto-reset output over-temperature protection  
内部過熱保護機能
- Power Good Signal  
パワーグッド信号出力
- High reliability, MTBF = 1 Million Hours  
高信頼性: MTBF = 1 Million Hours
- UL60950 recognition in U.S. & Canada, and CB Scheme certification per IEC/EN60950 (pending)  
UL60950, CB Scheme (準拠)
- All materials meet UL94, V-0 flammability rating  
全ての部品は UL94 V-0に適合

# FDPK05SR8004PSV

# Preliminary Data Sheet

3.0-5.5Vdc Input, 4A, 0.8-3.465Vdc Output

## Electrical Specifications 電氣的仕様

All specifications apply over specified input voltage, output load, and temperature range, unless otherwise noted.

注記が無い場合、全ての仕様は指定された入力電圧、負荷、温度範囲で適用されます。

Conditions:  $T_a=25\text{degC}$ , Airflow=50LFM (0.25m/s),  $V_{in}=5.0\text{Vdc}$ , unless otherwise specified.

PARAMETER	NOTES	MIN	TYP	MAX	UNITS
<b>ABSOLUTE MAXIMUM RATINGS<sup>1</sup></b>					
Input Voltage		-0.3		6.0	Vdc
Operating Temperature	See page 8	-40		85	°C
Storage Temperature		-55		125	°C
Output Voltage		0.8		3.465	Vdc
Power Good Voltage		-0.3		5.0	Vdc
Power Good Sink Current				5.0	mA
<b>FEATURE CHARACTERISTICS</b>					
Switching Frequency			600		kHz
Output Voltage Programming Range	See page6. Output Voltage Adjust	0.8		3.465	Vdc
Turn-On Delay Time	Full resistive load				
with $V_{in}$ (module enabled, then $V_{in}$ applied)	From $V_{in}=V_{in}(\text{min})$ to $0.1*V_{out}(\text{nom})$		3.0		ms
with Enable ( $V_{in}$ applied, then enabled)	From enable to $0.1*V_{out}(\text{nom})$		3.0		ms
Rise Time (Full resistive load)	From $0.1*V_{out}(\text{nom})$ to $0.9*V_{out}(\text{nom})$		3.0		ms
Remote Control (Positive Logic)					
Module Off		-0.2		0.4	Vdc
Module On		1.3		$V_{in}$	Vdc
Power Good	Set point for power good output high	82	88	93	% $V_{out}$
Power Good Output Low	$I_{PGOOD}=5\text{mA}$			0.5	V
Power Good Leakage Current				10	uA

### <sup>1</sup>Absolute Maximum Ratings 絶対最大定格

Stresses in excess of the absolute maximum ratings may lead to degradation in performance and reliability of the converter and may result in permanent damage.

絶対最大定格を超えたストレスは、性能の低下、信頼性の低下、及びモジュールの破損を引き起こすことがあります。

# FDPK05SR8004PSV

# Preliminary Data Sheet

3.0-5.5Vdc Input, 4A, 0.8-3.465Vdc Output

 Conditions:  $T_a=25\text{degC}$ , Airflow=50LFM (0.25m/s),  $V_{in}=5.0\text{Vdc}$ , unless otherwise specified.

PARAMETER	NOTES	MIN	TYP	MAX	UNITS
<b>INPUT CHARACTERISTICS</b>					
Operating Input Voltage Range	$V_{out} \leq 2.0\text{Vdc}$	3.0	5.0	5.5	Vdc
	$2.0\text{Vdc} < V_{out} \leq 2.75\text{Vdc}$	4.3	5.0	5.5	Vdc
	$2.75\text{Vdc} < V_{out}$	4.75	5.0	5.5	Vdc
Input Under Voltage Lockout					
Turn-On Threshold		2.2	2.4	2.8	Vdc
Turn-Off Threshold		1.7	2.0	2.3	Vdc
Maximum Input Current	4A <sub>out</sub> at $V_{in}$ -min				
	$V_{out}=3.465\text{V}$			3.4	Adc
	$V_{out}=3.3\text{V}$			3.2	Adc
	$V_{out}=2.5\text{V}$			2.8	Adc
	$V_{out}=1.8\text{V}$			3.0	Adc
	$V_{out}=1.5\text{V}$			2.5	Adc
	$V_{out}=1.2\text{V}$			2.1	Adc
	$V_{out}=1.0\text{V}$			1.8	Adc
	$V_{out}=0.8\text{V}$			1.6	Adc
Input Stand-by Current (module disabled)			1.5		mA
Input No Load Current	$V_{out}=3.465\text{V}$		50		mA
	$V_{out}=3.3\text{V}$		50		mA
	$V_{out}=2.5\text{V}$		50		mA
	$V_{out}=1.8\text{V}$		45		mA
	$V_{out}=1.5\text{V}$		40		mA
	$V_{out}=1.2\text{V}$		40		mA
	$V_{out}=1.0\text{V}$		35		mA
	$V_{out}=0.8\text{V}$		35		mA
Input Reflected-Ripple Current	See Fig.G for setup (BW=20MHz)				
	$V_{out}=3.465\text{V}$		15		mAp-p
	$V_{out}=3.3\text{V}$		15		mAp-p
	$V_{out}=2.5\text{V}$		15		mAp-p
	$V_{out}=1.8\text{V}$		15		mAp-p
	$V_{out}=1.5\text{V}$		10		mAp-p
	$V_{out}=1.2\text{V}$		10		mAp-p
	$V_{out}=1.0\text{V}$		10		mAp-p
	$V_{out}=0.8\text{V}$		10		mAp-p

# FPDK05SR8004PSV

# Preliminary Data Sheet

3.0-5.5Vdc Input, 4A, 0.8-3.465Vdc Output

Conditions:  $T_a=25\text{degC}$ , Airflow=50LFM (0.25m/s),  $V_{in}=5.0\text{Vdc}$ , unless otherwise specified.

PARAMETER	NOTES	MIN	TYP	MAX	UNITS
<b>OUTPUT CHARACTERISTICS</b>					
Output Voltage Set Point (no load)		-2.5		+2.5	%Vout
Output Regulation					
Over Line	Full resistive load		+/- 0.1		%Vout
Over Load	From no load to full load		+/- 0.3		%Vout
Output Voltage Range (Over all operating input voltage, resistive load and temperature conditions until end of life)	Output Ripple is not included.	-3.0		+3.0	%Vout
Output Ripple and Noise BW=20MHz	See Fig.F for setup (BW=20MHz)				
	Vout=3.465V		30	45	mVp-p
	Vout=3.3V		30	45	mVp-p
	Vout=2.5V		30	45	mVp-p
	Vout=1.8V		30	45	mVp-p
	Vout=1.5V		25	40	mVp-p
	Vout=1.2V		20	30	mVp-p
	Vout=1.0V		20	30	mVp-p
	Vout=0.8V		20	30	mVp-p
External Load Capacitance	Ceramic Capacitor	10		1000	uF
	Min ESR > 10mΩ			2000	uF
Output Current Range		0		4.0	A
Output Current Limit Inception (Iout)			200		%
Output Short-Circuit Current	Short=10mΩ, Vout=3.3Vdc set		0.7		Arms
Pre-Bias Voltage	Turn-On, Vout=3.3Vdc set			1.5	Vdc
<b>DYNAMIC RESPONSE</b>					
	See Fig.F for setup (BW=20MHz)				
Iout step from 2A to 4A with di/dt=5A/us	Vout=3.465Vdc		210		mV
	Vout=0.8Vdc		140		mV
Settling time (to within 10% of Vout)	Vout=3.465Vdc		80		us
	Vout=0.8Vdc		20		us
Iout step from 4A to 2A with di/dt=-5A/us	Vout=3.465Vdc		180		mV
	Vout=0.8Vdc		140		mV
Settling time (to within 10% of Vout)	Vout=3.465Vdc		80		us
	Vout=0.8Vdc		20		us
<b>EFFICIENCY</b>					
	Full load (4A)				
	Vout=3.465V		92.0		%
	Vout=3.3V		91.5		%
	Vout=2.5V		89.5		%
	Vout=1.8V		86.5		%
	Vout=1.5V		84.5		%
	Vout=1.2V		81.5		%
	Vout=1.0V		79.0		%
	Vout=0.8V		75.5		%

# FPDK05SR8004PSV

3.0-5.5Vdc Input, 4A, 0.8-3.465Vdc Output

# Preliminary Data Sheet

## Operation

### Input and Output Impedance

The **FPDK05SR8004PSV** converter should be connected to a DC power source using a low impedance input line. In order to counteract the possible effect of input line inductance on the stability of the converter, the use of decoupling capacitors placed in close proximity to the converter input pins is recommended. This will ensure stability of the converter and reduce input ripple voltage. Although low ESR Tantalum or other capacitors should typically be adequate, very low ESR capacitors (ceramic, over 47 $\mu$ F) are recommended to minimize input ripple voltage. The converter itself has on-board internal input capacitance of 6 $\mu$ F with very low ESR (ceramic).

**FPDK05SR8004PSV**と入力電源間は低インピーダンスで接続してください。コンバータの安定性に影響のある入力インダクタンスを抑えるため、コンバータの入力ピンの近傍にデカップリングコンデンサを付加することをお勧めします。これによりコンバータの安定動作を確実にし、入力リップル電圧を抑制します。低ESRタンタル、又はその他のコンデンサも一般的には問題ありませんが、入力リップルを最小にするためには、非常に低ESRコンデンサ(セラミックで47 $\mu$ F以上)を推奨します。コンバータ自身は入力回路に極低ESRの6 $\mu$ Fセラミック入力コンデンサを搭載しています。

The **FPDK05SR8004PSV** is capable of stable operation with no external capacitance on the output. To minimize output ripple voltage, the use of very low ESR ceramic capacitors is recommended. These capacitors should be placed in close proximity to the load to improve transient performance and to decrease output voltage ripple.

**FPDK05SR8004PSV**は出力に外付けコンデンサが無い状態でも安定して動作します。出力リップルを最小にするため、極低ESRのセラミックコンデンサの接続を推奨します。過渡時の特性向上と出力リップル低減のために負荷の近傍に極低ESRセラミックコンデンサを実装することをお勧めします。

Note that the converter does not have a SENSE pin to counteract voltage drops between the output pins and the load. The impedance of the line from the converter output to the load should thus be kept as low as possible to maintain good load regulation.

このコンバータは出力端子と負荷間の電圧ドロップを補正するセンス端子を設けていません。精度の高い負荷特性を保持するために、コンバータの出力から負荷までのラインインピーダンスは可能な限り低くしてください。

### REMOTE (Pin 3)

The REMOTE pin (Pin 3) can be used to turn the converter on or off remotely using a signal that is referenced to GND (Pin 2 or 7). A typical configuration for remote ON/OFF is shown in Fig. A.

リモート端子(3番ピン)はGND(2又は7番ピン)を基準としたリモート信号によりコンバータをON/OFFするのに使用できます。一般的なリモートON/OFF回路を図-Aに示します。

The **FPDK05SR8004PSV** turns on when the REMOTE pin is at logic high (open) and turns off when it is at logic low. When the REMOTE pin is left open, the converter is on. Voltage ranges for logic high/low are provided in the Electrical Specifications section.

**FPDK05SR8004PSV**はリモート端子が論理的にHigh (open)で動作し、論理的にLowで停止します。リモート端子が未接続 (オープン)の場合、コンバータはONします。論理的High/Lowの電圧範囲は電気的特性を参照してください。

The REMOTE pin (pin3) is internally pulled-up to Vin. An open collector (open -drain) transistor can be used to drive the REMOTE pin (pin3).

The device driving the REMOTE pin (pin3) must be capable of sinking up to 0.3mA at low logic level.

リモート端子(3番ピン)はモジュール内部でVinにプルアップされています。リモート端子(3番ピン)の操作にはオープンコレクタ(オープンドレイン)のトランジスタが使用可能です。

リモート端子(3番ピン)を操作するデバイスにはLowレベルで0.3mAのシンク能力が必要です。

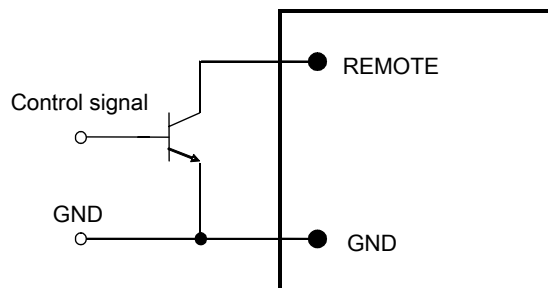


Fig. A: A typical configuration for remote ON/OFF

### Power Good (Pin 6)

The Power Good Signal is an open-drain output that asserts low when Vout is out of regulation.

パワーグッド信号はオープンドレイン出力で、出力電圧が確定していない状態ではLowとなります。

# FPDK05SR8004PSV

3.0-5.5Vdc Input, 4A, 0.8-3.465Vdc Output

# Preliminary Data Sheet

## Output Voltage Adjust/TRIM (Pin 5)

The output voltage of the **FPDK05SR8004PSV** converter can be programmed from 0.8V to 3.465V by using an external resistor

FPDK05SR8004PSVの出力電圧は外部抵抗を接続することで、0.8V～3.465Vまで可変可能です。

### External Resistor

An external trim resistor,  $R_{TRIM}$ , should be connected between TRIM (pin 5) and GND (pin 2 or 7); see Fig. B. The value of  $R_{TRIM}$ , in k $\Omega$ , for a desired output voltage,  $V_{O-REQ}$ , in V, is given by:

外部抵抗  $R_{TRIM}$  は TRIM 端子 (5 番ピン) と GND 端子 (2 又は 7 番ピン) の間に接続してください。図 B を参照。  $R_{TRIM}$  の定数、及び必要な出力電圧は次の式により求めます。

$$R_{TRIM} = \frac{7}{(V_{O-REQ} - 0.8)} - 1 \quad [k\Omega]$$

Note that the tolerance of a trim resistor will affect the tolerance of the output voltage. Standard 1% or 0.5% resistors may suffice for most applications; however, a tighter tolerance can be obtained by using two resistors in series instead of one standard value resistor.

Table 1 lists calculated values of  $R_{TRIM}$  for common output voltages. For each value of  $R_{TRIM}$ , Table 1 also shows the closest available standard resistor value.

$R_{TRIM}$  の公差は出力電圧の公差に影響します。ほとんどの使用状況においては、標準的な 1% 又は 0.5% 品の抵抗で十分です。しかしながら、より厳しい出力精度のためには、抵抗 1 本よりも 2 本を直列に使用します。Table 1 に一般的な出力電圧を設定する際の抵抗値を表示します。また Table 1 に標準的な抵抗を使用した場合の近似値も表示しています。

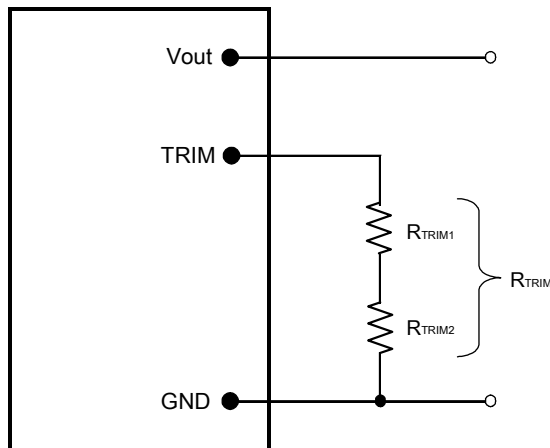


Fig.B: Configuration for programming output voltage

Table 1: Trim Resistor Value

$V_{O-REQ}$ [V]	$R_{TRIM}$ [k $\Omega$ ]	The Closest Standard Value [k $\Omega$ ] $R_{TRIM1} + R_{TRIM2}$
0.8	Open	Open
1.0	34.000	34.000 + 0.000
1.2	16.500	16.500 + 0.000
1.5	9.000	7.500 + 1.500
1.8	6.000	3.000 + 3.000
2.5	3.118	3.000 + 0.120
3.3	1.800	1.800 + 0.000

## Protection Features

### Input Under-Voltage Lockout

From a turned-on state, the converter will turn off automatically when the input voltage drops below typically 2.0V. It will then turn on automatically when the input voltage reaches typically 2.4V.

動作している状態で入力電圧が TYP で 2.0V 未満になると、このコンバータは自動的に停止します。また、入力電圧が TYP で 2.4V 以上になると、このコンバータは自動的に動作を開始します。

### Output Over-Current Protection (OCP)

The converter is self-protected against over-current and short circuit conditions. On the occurrence of an over-current condition, the converter will enter a pulse-by-pulse hiccup mode. On the removal of the over-current or short circuit condition,  $V_{out}$  will return to the original value (auto-reset).

このコンバータは過電流と短絡に対し自己保護します。過電流状態になると、このコンバータはパルス・バイパルス HICCUP モードになり、過電流状態が解除されると  $V_{out}$  は通常の値に戻ります。(自動リセット)

### Over-Temperature Protection (OTP)

The converter is self-protected against over-temperature conditions. In case of overheating due to abnormal operation conditions, the converter will turn off automatically. It will turn back on automatically once it has cooled down to a safe temperature (auto-reset).

このコンバータは過熱保護機能を有しています。異常な動作条件によって過熱状態になると、このコンバータは自動的に停止します。安全な温度にまで下がると自動的に復帰します。(自動リセット)

# FPDK05SR8004PSV

3.0-5.5Vdc Input, 4A, 0.8-3.465Vdc Output

## Preliminary Data Sheet

### Characterization

#### Overview

The converter has been characterized for several operational features, including thermal derating (maximum available load current as a function of ambient temperature and airflow), efficiency, power dissipation, start-up and shutdown characteristics, ripple and noise, and transient response to load step-changes.

このコンバータは温度デレージング、効率、電力損失、スタートアップ時、及びシャットダウン時の動作、リップル・ノイズ、動的負荷変動などを含む、さまざまな動作状態で特徴付けられます。

Figures showing data plots and waveforms for different output voltages are presented in the following pages.

各出力電圧時のデータ、及び波形の図は以後のページに掲載されています。

#### Test Conditions

To ensure measurement accuracy and reproducibility, all thermal and efficiency data were taken with the converter soldered to a standardized thermal test board. The thermal test board was mounted inside FDK's custom wind tunnel to enable precise control of ambient temperature and airflow conditions.

測定精度、及び再現性を確実にするために、全ての温度、及び効率データは標準化された温度評価ボードにコンバータを半田付けして取得しています。温度評価ボードをFDK特製の風洞実験設備内に設置することで、環境温度、及び風量を精密に管理しています。

The thermal test board comprised a four layer printed circuit board (PCB) with a total thickness of 0.060". Copper metallization on the two outer layers was limited to pads and traces needed for soldering the converter and peripheral components to the board. The two inner layers comprised power and ground planes of 2 oz. copper. This thermal test board, with the paucity of copper on the outer surfaces, limits heat transfer from the converter to the PCB, thereby providing a worst-case but consistent set of conditions for thermal measurements.

温度評価ボードは厚さ0.060"(1.6mm)厚の4層PCBで作成しています。表面2層の銅箔はコンバータを実装するためのパッドと周辺部品へのパターンのみ限定しています。内側2層は70μmの銅箔で電力、及びグラウンドラインを形成しています。このように表層の銅箔を限りなく少なくした温度評価ボードは、コンバータからPCBへの熱の逃げを制限し、ワーストケースでありながら矛盾の無い温度評価条件を実現しています。

FDK's custom wind tunnel was used to provide precise horizontal laminar airflow in the range of 50 LFM to 600LFM, at ambient temperatures between 30°C and 85°C. Infrared (IR) thermography and thermocouples were used for temperature measurements. (See Fig. C & Fig. D)

FDK特製の風洞実験装置は水平方向の層流を50LFM(自然対流と同等、NC)から600LFMまで精密に制御でき、環境温度は30°Cから85°Cを制御できます。温度測定には赤外線(IR)サーモグラフィと熱電対を使用しています。(図C及びD参照)



Fig. C: FDK Original Wind Tunnel

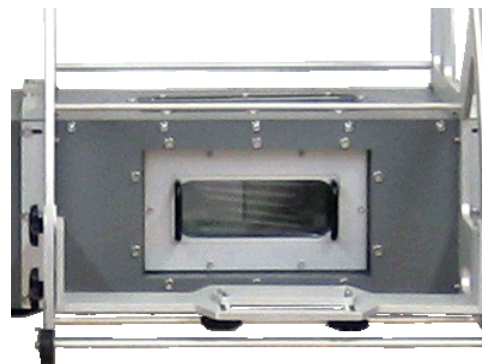


Fig. D: Test Chamber

### Thermal Derating

Fig.1 show the maximum available load current vs. ambient temperature and airflow rates. Ambient temperature was varied between 30°C and 85°C, with airflow rates from NC(50LFM) to 400LFM (0.25m/s to 2.0m/s). The converter was mounted horizontally, and the airflow was parallel to the long axis of the converter, going from pin 1 to pin 8.

図1はある環境温度と風量の条件下における最大出力電流を表しています。環境温度は風量NC(50LFM)~400LFMの条件で30°C~85°Cの間を変動させています。コンバータは水平に設置し、風向きはコンバータの長手方向に平行で1番ピンから8番ピンに向けて吹いています。

# FPDK05SR8004PSV

3.0-5.5Vdc Input, 4A, 0.8-3.465Vdc Output

# Preliminary Data Sheet

The maximum available load current, for any given set of conditions, is defined as the lower of:

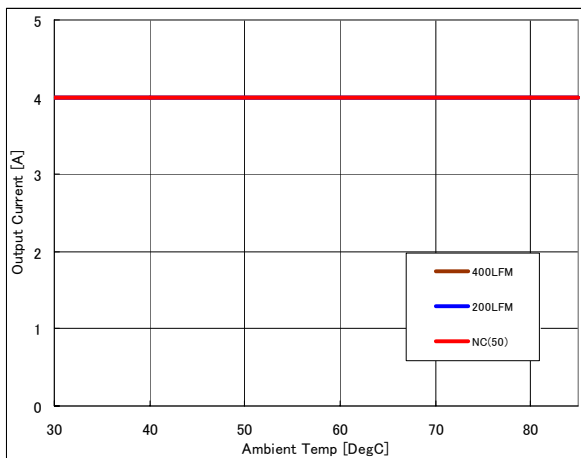
- (i) The output current at which the temperature of any component reaches 120°C, or
- (ii) The current rating of the converter (4A)

各々の測定条件で最大出力電流の値は下記のとおり定義します。

- (i) いずれかの部品の温度が120°Cに到達した時点の出力電流値、又は
- (ii) コンバータの公称定格電流 (4A)

Note that continuous operation beyond the derated current as specified by the derating curves (Fig.1) may lead to degradation in performance and reliability of the converter and may result in permanent damage.

出力電流デレーティングカーブ(図1)で指定された定格電流を超えた連続した操作は、性能の低下、信頼性の低下、及びモジュールの破損を引き起こすことがあります。



**Fig. 1:** Output current vs. ambient temperature and air velocity at 5.0V<sub>in</sub>, 0.8V to 3.465V out

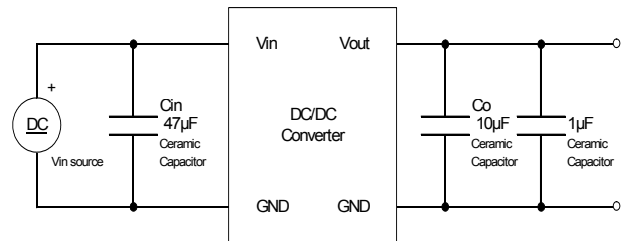
The main heat dissipation method of this converter is to transfer its heat to the system board. Thus, if the temperature of the system board goes high, even with the low ambient temperature, it may exceed the guaranteed temperature of components.

このコンバータの主な放熱方法は、システム基板へ自身の熱を逃がすというものです。このため、周囲温度が低くてもシステム基板の温度が高温になると、使用部品の保証温度を超えることがあります。

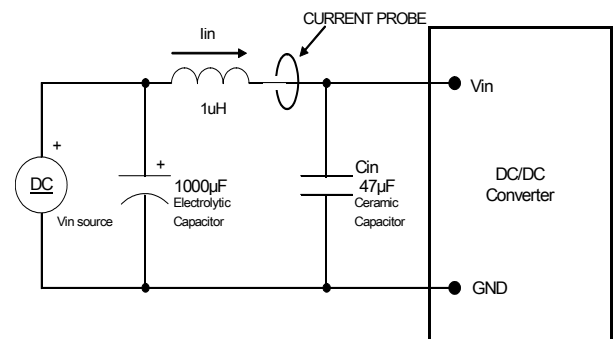
## Test Circuit

The test circuit setup shown in Fig. F was used to obtain the output voltage ripple and output voltage response to step load change. Fig. G was used to obtain the input reflected ripple current waveforms.

図Fに示す試験回路は出力リップル及び負荷急変の測定に使用しており、入力リップルの測定には図Gの試験回路を使用しています。



**Fig. F:** Test setup for measuring output voltage ripple and output voltage response to step load change



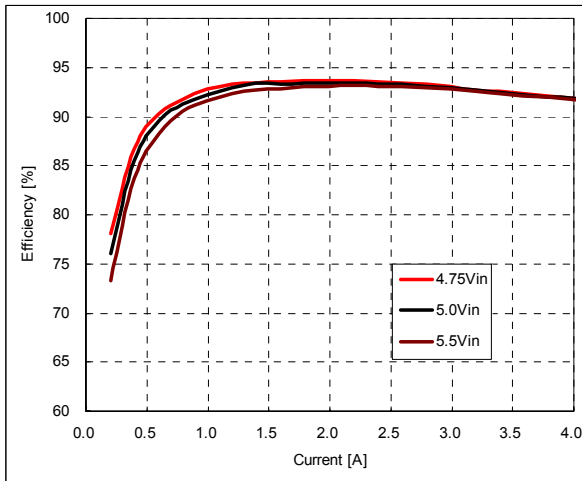
**Fig. G:** Test setup for measuring input reflected ripple current



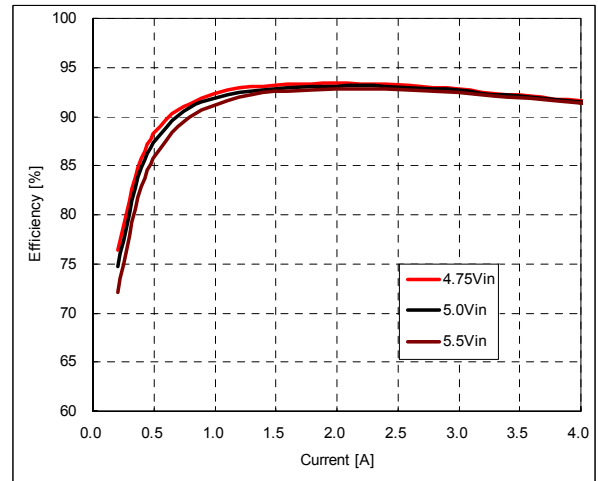
**FDPK05SR8004PSV**

3.0-5.5Vdc Input, 4A, 0.8-3.465Vdc Output

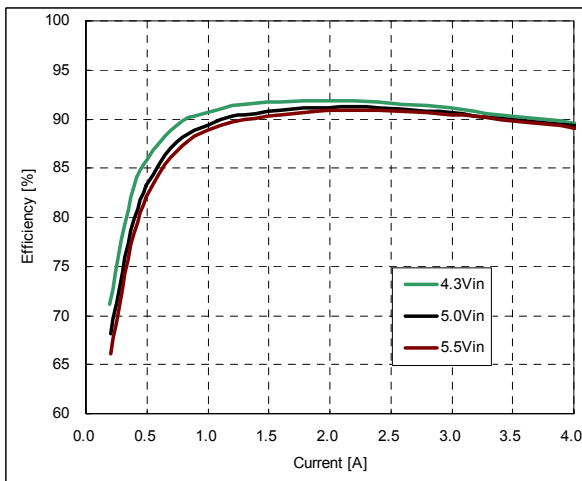
**Preliminary Data Sheet**



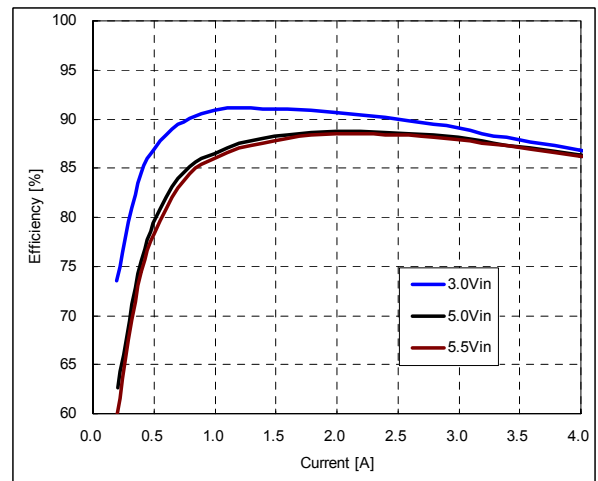
**Fig.2:** Efficiency vs. load current and input voltage for 3.465Vout



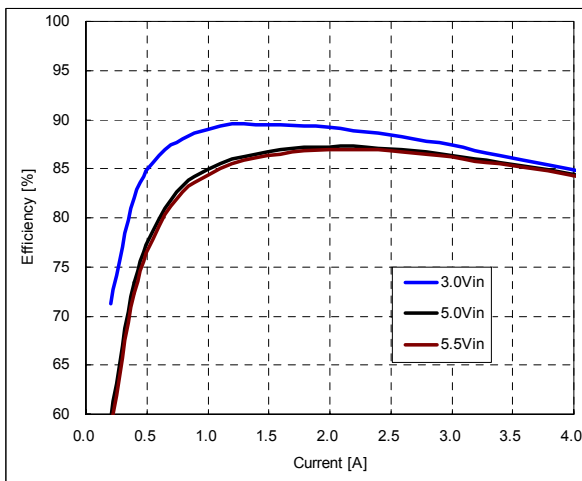
**Fig.3:** Efficiency vs. load current and input voltage for 3.3Vout



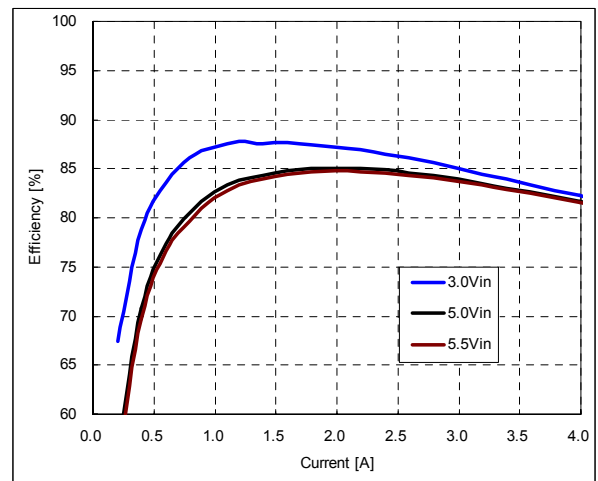
**Fig.4:** Efficiency vs. load current and input voltage for 2.5Vout



**Fig.5:** Efficiency vs. load current and input voltage for 1.8Vout



**Fig.6:** Efficiency vs. load current and input voltage for 1.5Vout

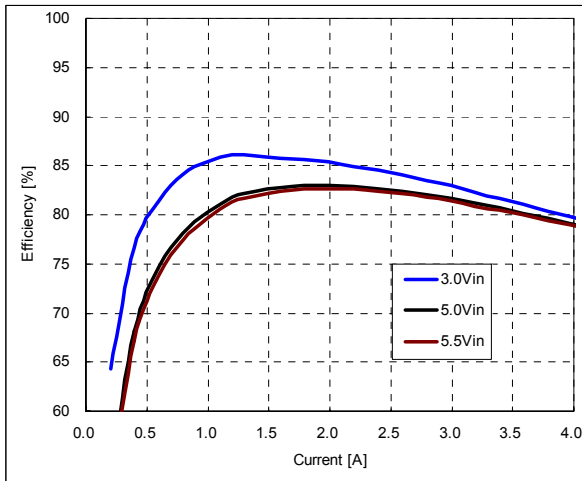


**Fig.7:** Efficiency vs. load current and input voltage for 1.2Vout

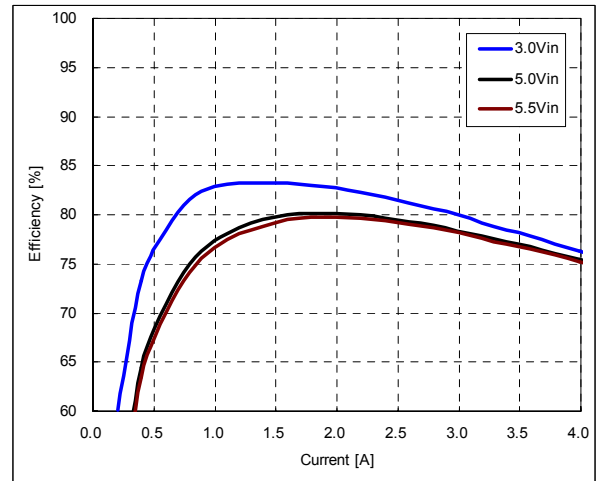
**FDPK05SR8004PSV**

3.0-5.5Vdc Input, 4A, 0.8-3.465Vdc Output

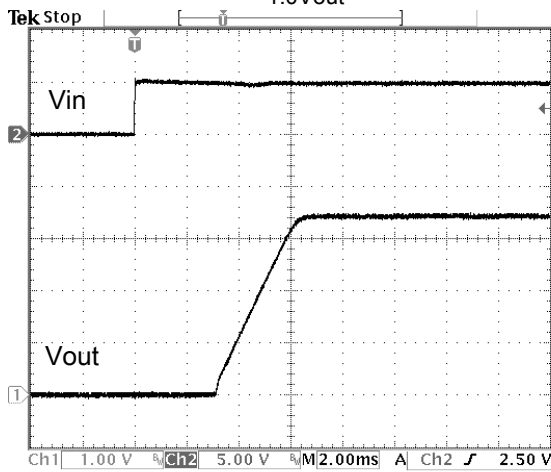
**Preliminary Data Sheet**



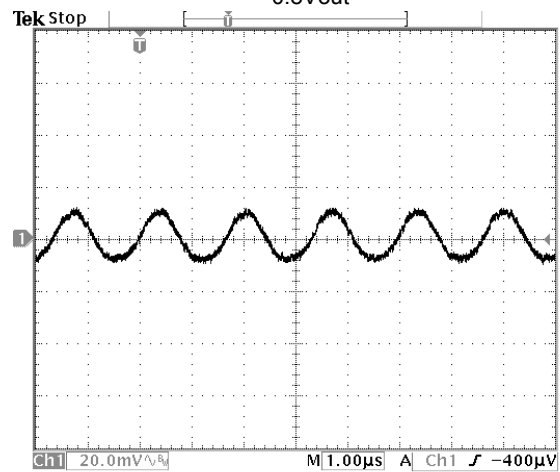
**Fig.8:** Efficiency vs. load current and input voltage for 1.0Vout



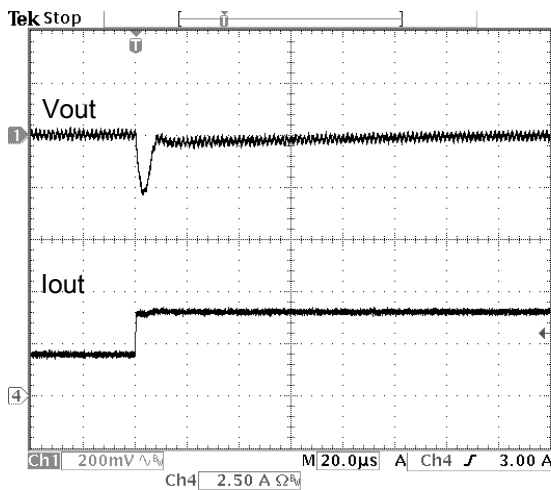
**Fig.9:** Efficiency vs. load current and input voltage for 0.8Vout



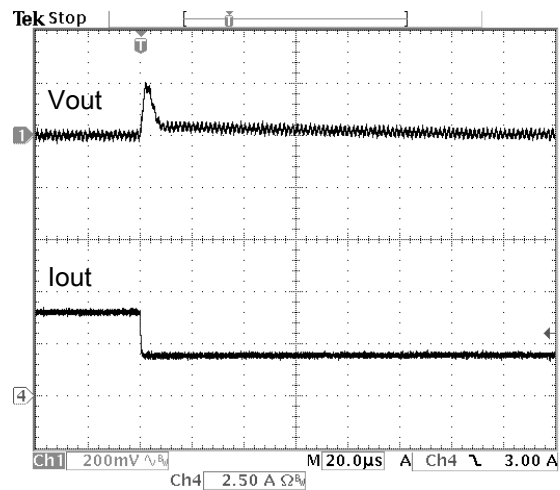
**Fig.10:** Turn on delay time at 5.0VIn, 3.465V/4A out



**Fig.11:** Output ripple and noise at 5.0VIn, 3.465V/4Aout



**Fig.12:** Output voltage response to step load change at 5A/us from 50% to 100% (5.0VIn, 3.465Vout)

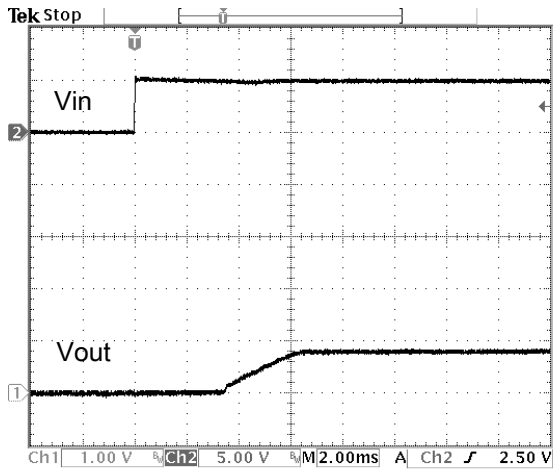


**Fig.13:** Output voltage response to step load change at 5A/us from 100% to 50% (5.0VIn, 3.465Vout)

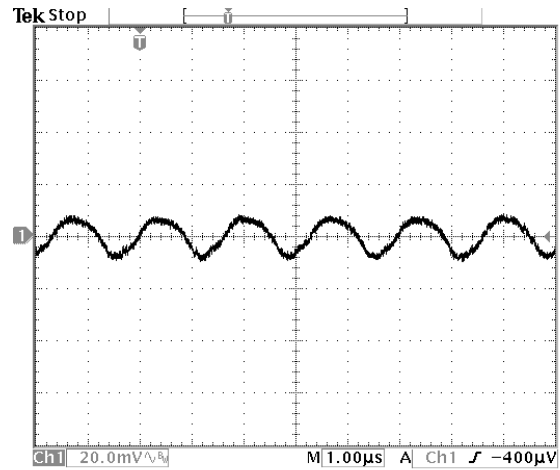
# FDPK05SR8004PSV

3.0-5.5Vdc Input, 4A, 0.8-3.465Vdc Output

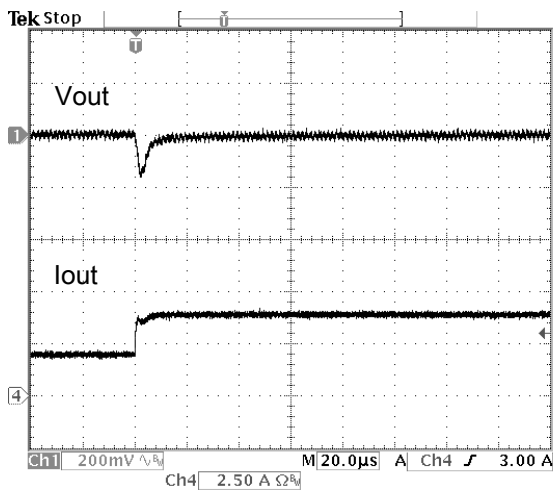
# Preliminary Data Sheet



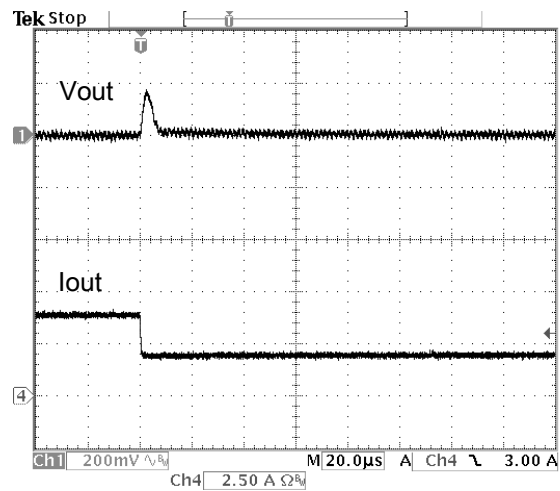
**Fig.14:** Turn on delay time at 5.0Vin, 0.8V/4A out



**Fig.15:** Output ripple and noise at 5.0Vin, 0.8V/4Aout



**Fig.16:** Output voltage response to step load change at 5A/us from 50% to 100% (5.0Vin, 0.8Vout)



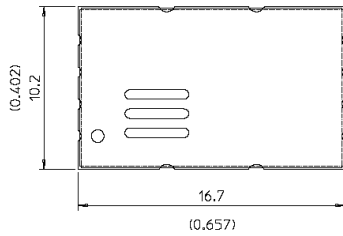
**Fig.17:** Output voltage response to step load change at 5A/us from 100% to 50% (5.0Vin, 0.8Vout)

# FDPK05SR8004PSV

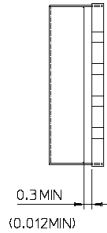
3.0-5.5Vdc Input, 4A, 0.8-3.465Vdc Output

# Preliminary Data Sheet

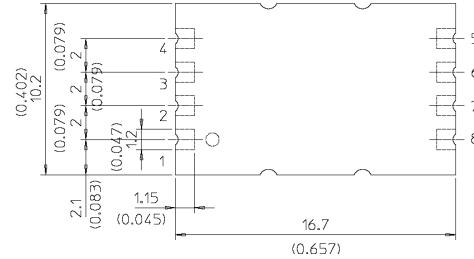
## Mechanical Drawing



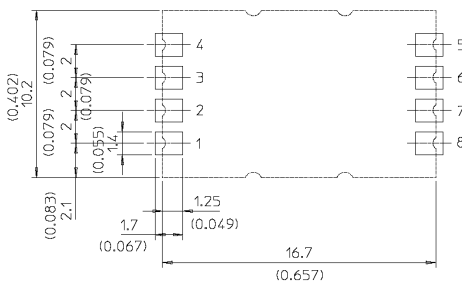
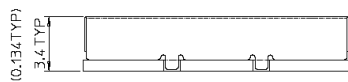
TOP VIEW OF BOARD



SIDE VIEW OF BOARD



TOP VIEW OF BOARD



RECOMMENDED PAD LAYOUT

### Notes

- All dimensions are in millimeters (inches)
- Unless otherwise specified, tolerances are +/- 0.25mm
- Connector Finish: Gold over Nickel
- Converter Weight: 0.039oz (1.1g)
- The only PCB traces under the converter should be the recommended pads, and GND traces.

Terminal Connections			
Pin#	Function	Pin#	Function
1	Vin	5	TRIM
2	GND	6	POWER GOOD
3	REMOTE	7	GND
4	NC	8	Vout

## DK Series Part Numbering Scheme

Product Series	Sub Series	Nominal Input Voltage	Mounting Scheme	Output Voltage	Rated Current	ON/OFF Logic	Option1	Option2
FP	DK	05	S	R80	04	P	S	V
Series Name		Typ=5.0V	Surface Mount	0.8V (Programmable: See page 6)	4A	Positive	Standard	Standard

### Notes

**NUCLEAR AND MEDICAL APPLICATIONS:** FDK Corporation products are not authorized for use as critical components in life support systems, equipment used in hazardous environments, or nuclear control systems without the written consent of FDK Corporation.

**CLEANSING :** Cleansing of this converter is not recommended. When cleansing, determine a cleansing condition on your own responsibility after confirming there is no impact on the characteristics/performance of the converter.

**SPECIFICATION CHANGES AND REVISIONS:** Specifications are version-controlled, but are subject to change without notice.