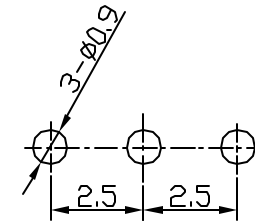
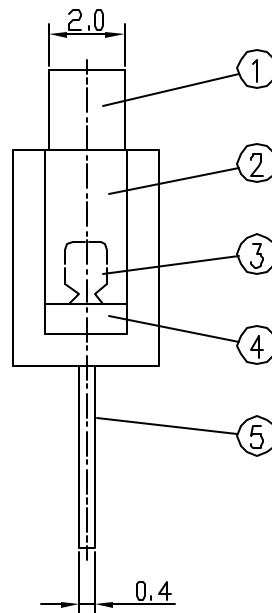
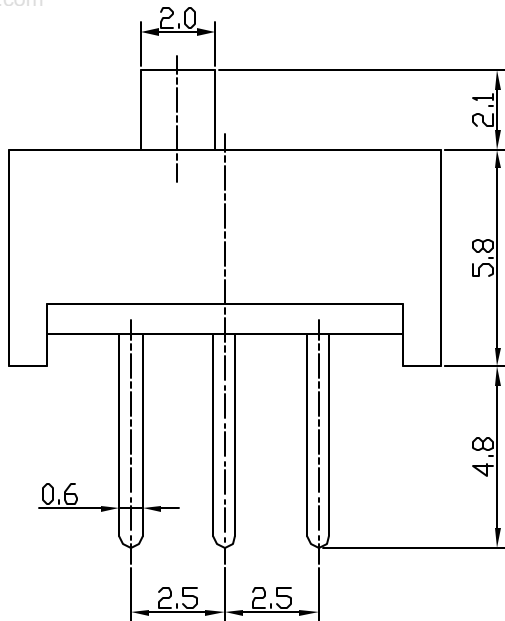


SCHEMATIC




HOLE LAYOUT

www.DataSheet4U.com



ALL DIMS ARE GIVEN IN mm

| NO. | PART NAME    | MATERIAL        | QTY | FINISHING |
|-----|--------------|-----------------|-----|-----------|
| 5   | TERMINAL     | BRASS           | 1   | Ag PLATED |
| 4   | BOTTOM SHEET | PHENOLIC RESINS | 1   | BLACK     |
| 3   | CLAMP        | PHOSPHOR BRONZE | 1   | Ag CLAD   |
| 2   | PLASTIC BOX  | POM             | 1   | BLACK     |
| 1   | PLASTIC BODY | POM             | 1   | BLACK     |


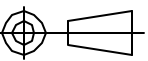
|                              |  |  |                  |                            |
|------------------------------|--|--|------------------|----------------------------|
| PROJECTION                   |  |  Research Develop Innovate<br>RDI, Inc. 400 Columbus Avenue Valhalla, NY 10595  |                  |                            |
| SCALE<br>5:1                 |  | TITLE<br>SLIDE SWITCHES  |                  |                            |
| TOLERANCE<br>EXCEPT AS NOTED |  | DR.<br>LUCIA   | DATE<br>05/13/04 | REF.<br>P/N: SS-12E01-G2.1 |
| DEC. MILLIMETERS             |  | CK.<br>JOEY  | PRE-<br>SW       | DRAWING NO.<br>1956        |
| 0 ~ 10 ±0.2<br>10 ~ 60 ±0.3  |  | SIZE<br>F  |                  | SHEET<br>1 OF 2            |
| ANG.<br>±3°                  |  | THIS DOCUMENT IS OWNED BY, AND THE INFORMATION CONTAINED IN IT IS PROPRIETARY TO, RDI. BY RECEIPT HEREOF THE HOLDER AGREES NOT TO USE THE INFORMATION AND NOT TO DISCLOSE IT TO ANY THIRD PARTY, NOR REPRODUCE THIS DOCUMENT WITHOUT THE WRITTEN CONSENT OF RDI, AND TO RETURN THIS DOCUMENT FORTHWITH UPON REQUEST. |                  |                            |

| ECN# | DATE | SYM | REVISION RECORD | AUTH | BY |
|------|------|-----|-----------------|------|----|
|      |      |     |                 |      |    |

|                               |                                 |  |   |
|-------------------------------|---------------------------------|--|---|
| 1. RATING : DC 50V 0.5A       |                                 |  |   |
| 2. FUNCTION : 1P2T            |                                 |  |   |
| 3. ELECTRICAL : NON-SHORTING  |                                 |  |   |
|                               | ITEM                            | TEST CONDITIONS  | PERFORMANCE   |
| 4                             | PRACTICAL TEMPERATURE RANGE     | -16°C ~ + 60°C   |   |
| 5                             | STANDARD ATMOSPHERIC CONDITIONS | NORMALLY, THE STANDARD RANGE OF ATMOSPHERIC CONDITION FOR MAKING MEASUREMENTS AND TESTS ARE AS FOLLOWS:<br>(1) AMBIENT TEMPERATURE: 5 °C TO 35 °C<br>(2) RELATIVE HUMIDITY: 45 % TO 85 % |   |
| 6. ELECTRICAL CHARACTERISTICS |                                 |  |   |
| 6.1                           | CONTACT RESISTANCE              | MEASURED AT SMALL CURRENT(100mA OR LESS) 1000Hz  | 80 mΩ MAX.  |
| 6.2                           | INSULATION RESISTANCE           | APPLY A VOLTAGE OF 500V DC SHALL BE APPLIED FOR 1 MIN. AFTER WHICH MEASUREMENT SHALL BE MADE.<br>(1) BETWEEN TERMINALS.<br>(2) BETWEEN INDIVIDUAL TERMINALS AND FRAME.                   | 100 MΩ MIN.   |
| 6.3                           | DIELECTRIC STRENGTH             | AC 500V rms(50 - 60 HZ) FOR 1 MIN TRIP CURRENT: 0.5 mA<br>(1) BETWEEN TERMINALS.<br>(2) BETWEEN INDIVIDUAL TERMINALS AND FRAME.  | NO DAMAGE TO PARTS ARCING OR BREAKDOWN ETC.   |
| 7. MECHANICAL CHARACTERISTICS |                                 |  |   |
|                               | ITEM                            | TEST CONDITIONS  | PERFORMANCE   |
| 7.1                           | OPERATING FORCE                 | MEASUREMENT SHALL BE MADE AT THE NEAREST POINT OF THE COMPONENT OR AT THE POINT 3mm FROM THE TIP ON THE ACTUATOR(KNOB).  | 200gf± 50gf   |
| 7.2                           | TERMINAL STRENGTH               | A STATIC LOAD OF 300 gf SHALL BE APPLIED TO TERMINAL FOR 15 SEC. IN ANY DIRECTION.   | CHARACTERISTICS SHALL BE SATISFIED WITHOUT DAMAGE OR EXCESSIVE LOOSENESS OF TERMINALS.  |
| 7.3                           | DISPLACEMENT OF ACTUATOR (KNOB) | A STATIC LOAD OF 10N(1Kgf) SHALL BE APPLIED TO THE TOP OF THE ACTUATOR (KNOB) AND THEN DISPLACEMENT SHALL BE MEASURED TO THE DIRECTION OF THE ARROW.                                     | THE LEVER SHALL HAVE NO SERIOUS DEFORMATION AND FUNCTION IS NORMALLY WORK.  |
| 7.4                           | LIFE TEST                       | ENDURANCE WITHOUT LOAD:<br>A SWITCH SHALL BE SUBJECTED TO 10,000 CYCLES AT A SPEED OF 25 TO 30 CYCLES PER MINUTE WITHOUT LOAD.   | AFTER TESTING:<br>(1) CONTACT RESISTANCE: 100mΩ MAX.<br>(2) INSULATION RESISTANCE: 100MΩ MIN.<br>(3) WITHSTAND VOLTAGE: AC500V, 1 MINUTE.<br>(4) OPERATING FORCE : ± 30% INITIAL VALUE .<br>(5) WITHOUT DAMAGE TO PARTS ARCING OR BREAKDOWN ETC . |

8. DURABILITY:

|     | ITEM                              | TEST CONDITIONS  | PERFORMANCE  |
|-----|-----------------------------------|--|--|
| 8.1 | SOLDERABILITY TEST                | THE TOP OF THE TERMINALS SHALL BE DIPPED 2mm IN THE SOLDER BATH OF 230 ± 5°C FOR 3± 0.5 SECONDS.   | THE AREA OF SOLDERING SHOULD BE OVER 75%   |
| 8.2 | RESISTANCE TO SOLDERING HEAT TEST | SOLDER BATH METHOD:<br>SOLDER TEMPERATURE 260± 5°C, IMMERSION TIME 3± 0.5 SEC. IMMERSION DEPTH UP TO THE SURFACE OF THE BOARD THICKNESS OF PRINTED WIRING BOARD 1.6mm DIMENSIONS OF COMPONENT HOLES IN THE PRINTED WIRING BOARD SHALL BE IN ACCORDANCE WITH THE SPECIFICATION. | WITHOUT DEFORMATION OF CASE OR EXCESSIVE LOOSENESS OF TERMINALS ELECTRICAL CHARACTERISTICS SHALL BE SATISFIED. |
| 8.3 | COLD TEST                         | THE SWITCH SHALL BE STORED AT A TEMPERATURE OF -20± 3°C FOR 96 HOURS. THEN THE SWITCH SHALL BE MAINTAINED AT STANDARD ATMOSPHERIC CONDITION FOR 1 HOUR AFTER WHICH MEASUREMENT SHALL BE MADE.  | THERE SHALL BE NO DEFORMATION OR CRACKS IN MOLDED PART.  |
| 8.4 | HEAT TEST                         | THE SWITCH SHALL BE STORED AT A TEMPERATURE OF 85± 2°C FOR 48 HOURS, THEN IT SHALL BE MAINTAINED AT STANDARD ATMOSPHERIC CONDITIONS FOR 1 HOUR AFTER WHICH MEASUREMENT SHALL BE MADE.  |  |
| 8.5 | HUMIDITY TEST                     | THE SWITCH SHALL BE STORED AT A TEMPERATURE OF 40± 2°C AND A HUMIDITY OF 90% TO 96 % FOR 96 HOURS. THEN THE SWITCH SHALL BE MAINTAINED AT STANDARD ATMOSPHERIC CONDITION FOR 1 HOUR AFTER WHICH MEASUREMENT SHALL BE MADE.   |  |

|   |  |   |                            |                 |
|---|--|---|----------------------------|-----------------|
| PROJECTION  |  |  Research Develop Innovate<br>RDI, Inc. 400 Columbus Avenue Valhalla, NY 10595 |                            |                 |
|  |  | TITLE<br>SLIDE SWITCHES SPECIFICATION   |                            |                 |
| SCALE<br>N/A  | DR.<br>LUCIA   | DATE<br>06/22/04  | REF.<br>P/N: SS-12E01-G2.1 | SHEET<br>2 OF 2 |
| TOLERANCE<br>EXCEPT AS NOTED  | CK.<br>JOEY  | PRE-<br>SW  | DRAWING NO.<br>1956        | SIZE<br>F       |
| DEC. INCHES<br>N/A  | THIS DOCUMENT IS OWNED BY, AND THE INFORMATION CONTAINED IN IT IS PROPRIETARY TO, RDI, BY RECEIPT HEREOF THE HOLDER AGREES NOT TO USE THE INFORMATION AND NOT TO DISCLOSE IT TO ANY THIRD PARTY, NOR REPRODUCE THIS DOCUMENT WITHOUT THE WRITTEN CONSENT OF RDI, AND TO RETURN THIS DOCUMENT FORTHWITH UPON REQUEST. |   |                            |                 |
| DEC. MILLIMETERS<br>N/A   | REV. -<br>   |   |                            |                 |

| ECN# | DATE | SYM | REVISION RECORD |
|------|------|-----|-----------------|
|      |      |     |                 |

| AUTH | BY |
|------|----|
|      |    |