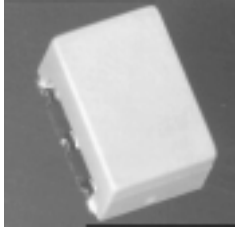


E-Series Surface Mount Mixer 5 – 1500 MHz



Features

- LO Power +7 dBm
- Up to +1 dBm RF
- Surface Mount

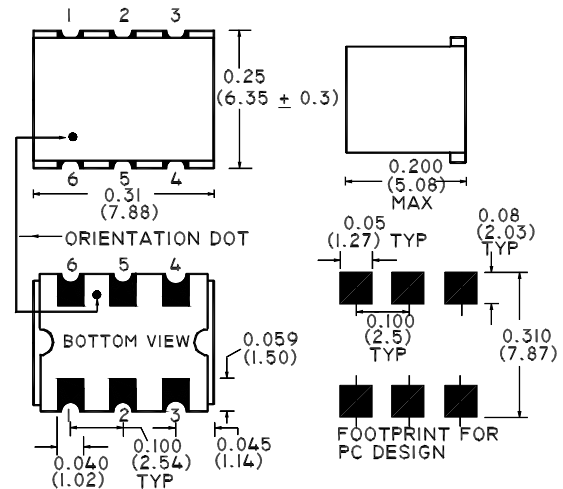


SM-87 Package

Note: Non Hermetic Package

Description

M/A-COM's ELCM-5 is a Low Cost, Broadband, high performance Double Balanced Mixer designed for use in high volume wireless applications. The device has been optimised by careful selection of the Schottky Diode and Balun Transformer for excellent performance. ELCM-5 is available in an SM-87 surface mount package and reflows using standard soldering reflow profiles.



Electrical Specifications @ +25°C, Z₀ = 50 Ohms, LO = +7dBm

Parameter	Units	Minimum	Typical	Maximum
Frequency Range				
RF	5 - 1500	MHz	—	—
LO	5 - 1500	MHz	—	—
IF	DC - 1000	MHz	—	—
Conversion Loss				
10 - 750	dB	—	6.5	7.5
5 - 1500	dB	—	7.5	9.5
Isolation (LO - RF)				
5 - 50	MHz	40	60	—
50 - 750	MHz	20	40	—
750 - 1500	MHz	18	30	—
Isolation (LO - IF)				
5 - 50	MHz	30	55	—
50 - 750	MHz	18	30	—
750 - 1500	MHz	8	15	—
RF Input for 1dB Compression	dBm	—	—	+1

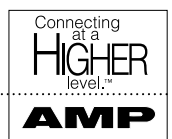
V3.00 S 1356 B



M/A-COM Division of AMP Incorporated ■ North America: Tel. (800) 366-2266, Fax (800) 618-8883 ■ Asia/Pacific: Tel. +85 2 2111 8088, Fax +85 2 2111 8087 ■ Europe: Tel. +44 (1344) 869 595, Fax+44 (1344) 300 020

www.macom.com

AMP and Connecting at a Higher Level are trademarks.
Specifications subject to change without notice.



Absolute Maximum Ratings

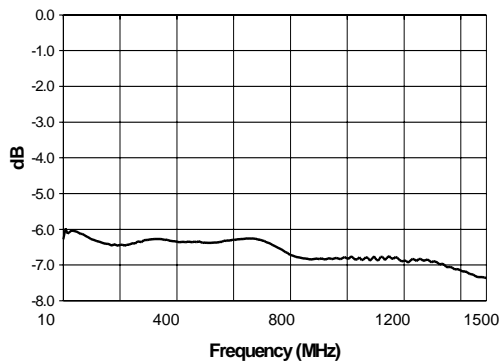
Parameter	Absolute Maximum
RF Power	150 mW
Peak IF Current	40 mA
Storage Temperature	-55°C to +100°C
Operating Temperature	-55°C to +100°C
Pin Temperature (10 Seconds)	260°C

Functional Configuration

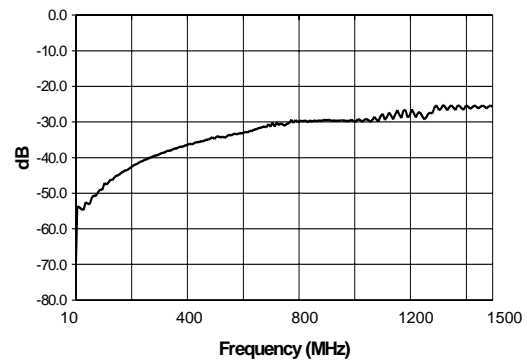
Function	Pin No.
LO	1
RF	4
IF	5
Ground	2, 3, 6
Case Ground	—
Unconnected	—

Typical Performance @ +25°C

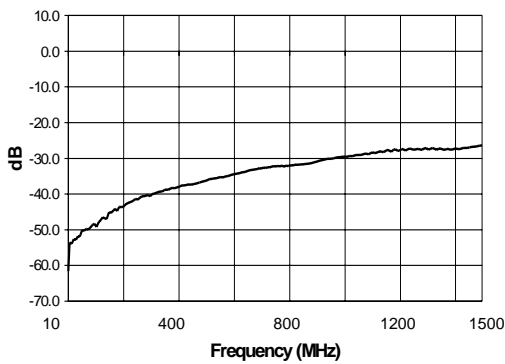
Conversion Loss



L-R Isolation



L-I Isolation



V3.00 S 1356 B



M/A-COM Division of AMP Incorporated ■ North America: Tel. (800) 366-2266, Fax (800) 618-8883 ■ Asia/Pacific: Tel. +85 2 2111 8088, Fax +85 2 2111 8087 ■ Europe: Tel. +44 (1344) 869 595, Fax+44 (1344) 300 020

www.macom.com

AMP and Connecting at a Higher Level are trademarks.
Specifications subject to change without notice.

