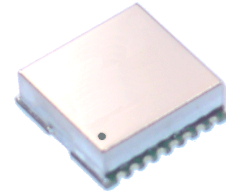


Features

- 5 dBm Output Level at 1887.5 MHz
- Channel Step Size : 200 kHz
- 2nd Harmonic : < -25 dBc
- Spurious Level : < -65 dBc
- Lock Time : < 10 ms
- Current Consumption : < 30 mA

Description

The plerow™ PLL synthesizer module was designed for use in wireless and wireline systems in a wide range of frequency from 50 MHz to 6 GHz. ASB's PLL provides exceptionally low spurious and phase noise performance with fast locking time and low current consumption. All products are available in a surface-mount type package.



Specifications

Parameter	Unit	Min.	Typical	Max.
Frequency Range	MHz	1850		1925
Output Power	dBm	3	5	7
Supply Voltage	V	4.75	5	5.25
Current Consumption	mA		25	30
Channel Step Size	kHz		200	
2 nd Harmonics	dBc		-35	-25
Spurious Level	dBc		-70	-65
Lock Time	ms			10
Reference Frequency	MHz		10	
Reference Input Level	dBm		0	
Phase Noise (C / N)				
@ 1 kHz			-77	-72
@ 10 kHz	dBc/Hz		-103	-98
@ 100 kHz			-121	-116
Output Impedance	Ω		50	
Operating Temp. Range	°C	-40	25	80
Package Type & Size	mm	SMT, 19.0W×19.0L×5.8H		

1) Measurement conditions are as follows: T = 25°C, V_{CC} = 5 V, Freq. = 1887.5 MHz, 50 ohm system.

More Information

Website: www.asb.co.kr
E-mail: sales@asb.co.kr

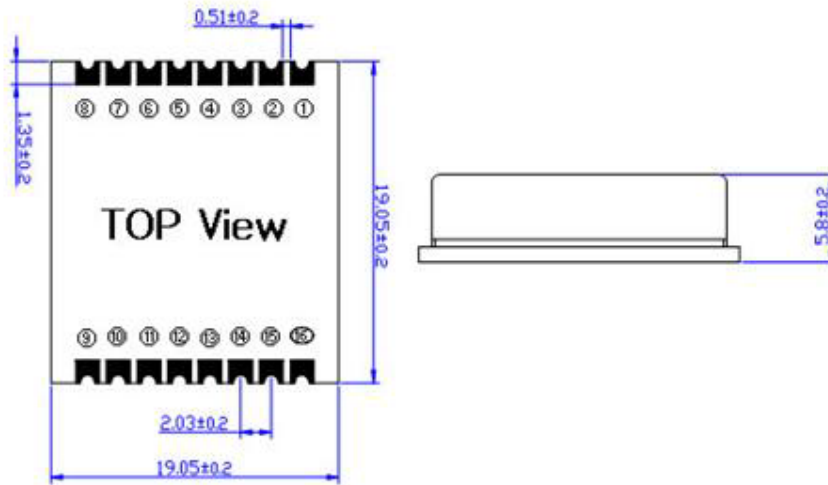
Tel: (82) 42-528-7223
Fax: (82) 42-528-7222

ASB Inc., 4th Fl. Venture Town
Bldg., 367-17 Goijeong-Dong,
Seo-Gu, Daejeon 302-716, Korea

Outline Drawing

APL0000 Type

Type	Dimension
Standard (PLL IC + VCO)	19 x 19 x 5.8



Pin Out for PLL			
Pin No.	Application	Pin No.	Application
1	CLOCK	9	VCC (VCO)
2	DATA	13	RF OUT
3	ENABLE	15	VCC (PLL)
4	OSC IN	16	LOCK DETECT
All other Pins are Grounded			

