

PC-TFT-064VT4N1

Driving Board

Features

- Used for TFT-LCD display: 6" AND-TFT-064VT4N1
- Video input D-Sub VGA Signal
- Dual composite video channels
- Requires only +12V input
- Operating temperature: 0 °C ~ 60 °C
- Storage temperature: -20 °C ~ 70 °C
- **RoHS Compliant**

The PC-TFT-064VT4N1 is designed to work with the AND-TFT-064VT4N1-HB color TFT display which is suitable for security, video game, door phone, video phone, portable TV and instrument display applications.

Mechanical Characteristics

Item	Specification	Unit
Screen Size	6.0 (diagonal)	inch
Outline Dimension	85.0 x 66.0 x 12.1	mm
Top Layer High (Max)	7.0	mm
Bottom Layer High (Max)	3.9	mm
Board Thickness	1.2	mm
Screws	D3.0 mm x 4	—

Absolute Maximum Rating

Item	Symbol	Conditions	Min.	Max.	Unit
Operating Temperature	Top	—	0	60	°C
Storage Temperature	Tstg	—	-20	70	°C

Electrical Characteristics

Symbol	I/O	Conditions	Min.	Typ.	Max.	Unit
V in	I	DC (+)	10	12	14	V
I in		DC (+12 V)	700	730	760	mA
P in			8.40	8.76	9.12	W

Product specifications contained herein may be changed without prior notice.
It is therefore advisable to contact Purdy Electronics before proceeding with the design of equipment incorporating this product.

Driver Board Introduction

Port Definition

- CON1: External Signal Input Terminal (14pin)
- CON2: Keyboard Operation Connector (10 pin)
- CON3: Connector of Driver Board with LCD Module (TTL/30 pin)
- CON4: NC
- CON6: Connector of Driver Board with LCD B/L Driver Board (4 pin)

Pin No.	Symbol	Input/Output	Min.
1	Vin	Input	Vin
2	GND	Input	Ground
3	GND	Input	Ground
4	CVBS1	Input	Composite Video
5	NC	Input	No connect
6	CVBS2	Input	Composite Video
7	GND	Input	Ground
8	R	Input	VGA Red Signal Input
9	G	Input	VGA Green Signal Input
10	B	Input	VGA Blue Signal Input
11	GND	Input	Ground
12	H-SYNC	Input	HSYNC Input for VGA
13	V-SYNC	Input	VSYNC Input for VGA
14	GND	Input	Ground

CON2 - Keyboard Operation Port (10 pin) Type: MOLEX 53261-1071 or compatible

Pin	Definition	Pin	Definition	Pin	Definition
1	Auto	5	Power	9	LED-Green
2	RIGHT	6	+3.3 V	10	LED-Red
3	LEFT	7	GND		
4	MENU	8	REMOTE		

CON3: 18 bit RGB Connector (30 pin) Type: MOLEX-87758-30 or compatible

Pin	Definition	Pin	Definition	Pin	Definition	Pin	Definition
1	CLK	9	R4	17	G5	25	GND
2	HSYNC	10	R5	18	GND	26	DE
3	VSYNC	11	GND	19	B0	27	VCC (+5V)
4	GND	12	G0	20	B1	28	VCC (+5V)
5	R0	13	G1	21	B2	29	R/L
6	R1	14	G2	22	B3	30	U/D
7	R2	15	G3	23	B4		
8	R3	16	G4	24	B5		

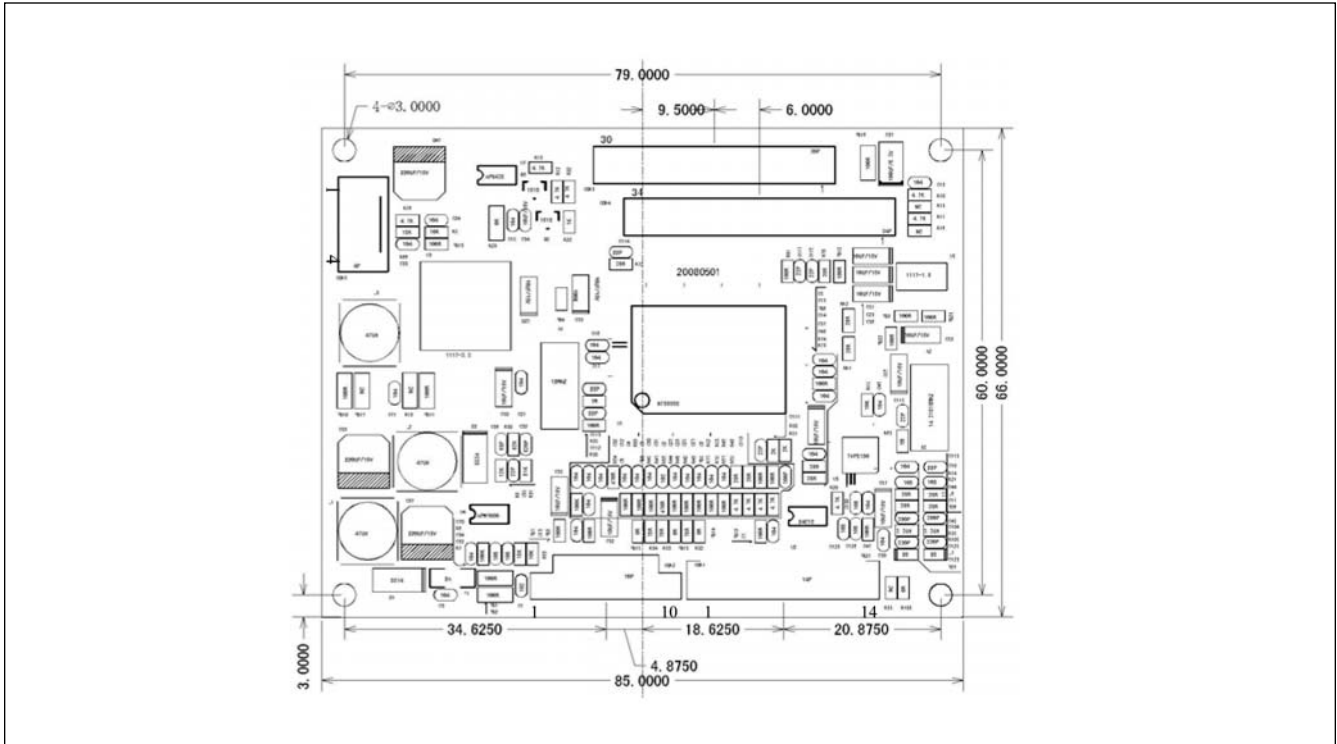
CON6: Inverter Connector (4 pin) Type: JST B3B-XH-A or compatible

Pin	Definition	Pin	Definition	Pin	Definition	Pin	Definition
1	+12 V	2	GND	3	On/Off (Note1)	4	DIM (Note 2)

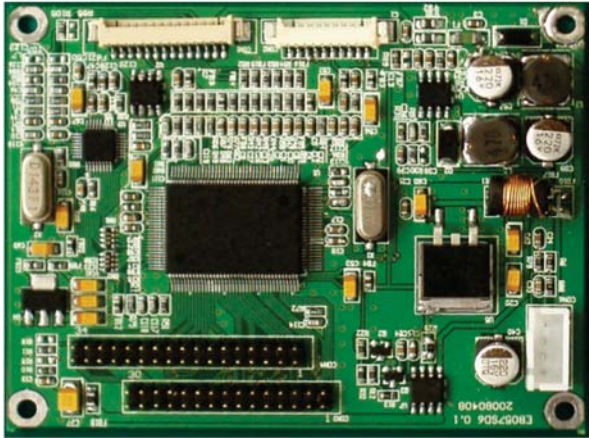


Note 1: Backlight control switch (ON: 1.5 ~ 5V, OFF: 0 ~1.5V)

Note 2: Brightness control (0 ~ 5V)

Driver Board Outline Drawing



Item List

DRIVER BOARD		CABLE FOR DEMO KIT		PANEL CABLE FOR PD064VT4	
					
DEMO KIT	KEYBOARD	CABLE FOR KEYBOARD		B/L DRIVER BOARD	B/L CABLE
