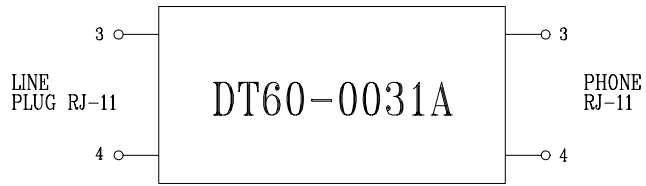
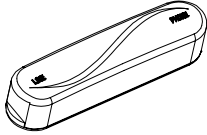


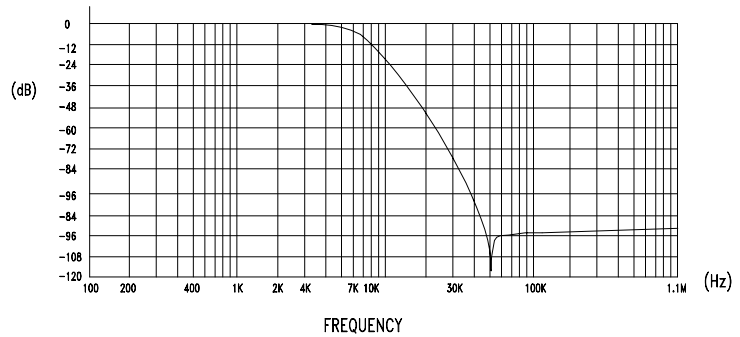


ADSL MICROFILTER

DT60-0031A

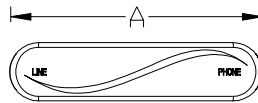


- The ADSL low pass filter is used to block any noise generated by other phones, fax's being introduced on the POT line.
- The filter with four orders is used to separate and reduce the voice band harmonics.



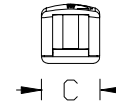
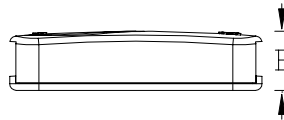
FEATURE

- Meeting UL-1950, UL94V-0
- Operation Temperature -10°C to $+70^{\circ}\text{C}$
- The POT splitter and low-pass filter will not affect the normal use of telephone service even the power supply or itself fails.
- Electrical characteristics meets Annex E.2 of ITU-T Rec.G.992.1
- Attenuation Distortion meet Annex E.2.3.1.3 of ITU-T Rec.G.992.1
- Return Loss meet Annex E.2.3.1.1 of ITU-T Rec.G.992.1



UNIT: mm

- A = 95.5 ± 1.0
- B = 21.50 ± 1.0
- C = 23.00 ± 1.0



| ELECTRICAL CHARACTERISTICS | | |
|----------------------------|------------|--|
| 3dB CUTOFF FREQUENCY | | 7KHz |
| D.C CHARACTERISTICS | D.C.C. | 100 mA |
| | D.C.R. | 25Ω Max. |
| | I.R. | $>5M \Omega$ @TIP TO GND & RING TO GND |
| INSERTION LOSS | SHORT LOOP | 1.0dB Max. @1004Hz |
| | LONG LOOP | 0.75dB Max. @1004Hz |
| ATTENUATION DISTORTION | SHORT LOOP | $\pm 1.5\text{dB}$ @0.2KHz ~ 3.4KHz |
| | SHORT LOOP | $\pm 2.0\text{dB}$ @3.4KHz ~ 4.0KHz |
| | LONG LOOP | $+0.5/-1.5\text{dB}$ @0.2KHz ~ 3.4KHz |
| | LONG LOOP | $+1.0/-1.5\text{dB}$ @3.4KHz ~ 4.0KHz |
| DELAY DISTORTION | SHORT LOOP | 200uS @0.6KHz ~ 3.2KHz |
| | SHORT LOOP | 250uS @0.2KHz ~ 4.0KHz |
| | LONG LOOP | 200uS @0.6KHz ~ 3.2KHz |
| | LONG LOOP | 250uS @0.2KHz ~ 4.0KHz |
| RETURN LOSS | ERL | 6dB Min. |
| | SRL-L | 5dB Min. |
| | SRL-H | 3dB Min. |
| LONGITUDINAL BALANCE | | 58dB Min. @0.2KHz ~ 1KHz |
| | | 53dB Min. @3KHz |
| ATTENUATION | | 65dB Min. @30KHz ~ 300KHz |
| | | 55dB Min. @300KHz ~ 1104KHz |
| IMPEDANCE | | 600Ω @300Hz ~ 3.4KHz |