



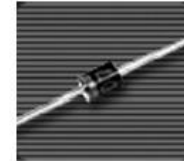
SYNSEMI SEMICONDUCTOR

1S1 thru 1S9

1.0 Amp. Super Fast Rectifiers
Voltage Range 50 to 1000 Volts Forward Current 1.0 Ampere

Features

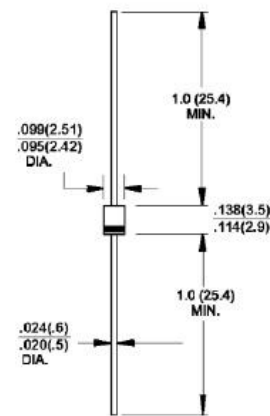
- ◆ Low forward voltage drop
- ◆ High current capability
- ◆ High reliability
- ◆ High surge current capability



R-1

Mechanical Data

- ◆ Case: Molded plastic R-1
- ◆ Epoxy: UL 94V-0 rate flame retardant
- ◆ Lead: Axial leads, solderable per MIL-STD-202, Method 208 guaranteed
- ◆ Polarity: Color band denotes cathode end
- ◆ High temperature soldering guaranteed: 250°C/10 seconds .375" (9.5mm) lead lengths at 5 lbs., (2.3kg) tension
- ◆ Weight: 0.007 ounce, 0.20 gram



Dimensions in inches and (millimeters)

Maximum Ratings and Electrical Characteristics

Ratings at 25°C ambient temperature unless otherwise specified.

Single phase, half wave, 60Hz, resistive or inductive load.

For capacitive load, derate current by 20%

Parameter	Symbols	1S1	1S2	1S3	1S4	1S5	1S6	1S7	1S8	1S9	Units	
Maximum repetitive peak reverse voltage	V_{RRM}	50	100	150	200	300	400	600	800	1000	Volts	
Maximum RMS voltage	V_{RMS}	35	70	105	140	210	280	420	560	700	Volts	
Maximum DC blocking voltage	V_{DC}	50	100	150	200	300	400	600	800	1000	Volts	
Maximum average forward rectified current .375" (9.5mm) lead length @ $T_a = 55^\circ\text{C}$	$I_{(AV)}$	1.0									Amp	
Peak forward surge current, 8.3ms single half sine-wave superimposed on rated load (JEDEC Method)	I_{FSM}	30.0									Amps	
Maximum instantaneous forward voltage @ 1.0A	V_F	0.95			1.3			1.7			Volts	
Maximum DC reverse current @ $T_a = 25^\circ\text{C}$ at rated DC blocking voltage @ $T_a = 100^\circ\text{C}$	I_R	5.0					100					μA μA
Maximum reverse recovery time (Note 1)	t_r	35									nS	
Typical junction capacitance (Note 2)	C_j	40					25					pF
Operating temperature range	T_j	-65 to +125									°C	
Storage temperature range	T_{STG}	-65 to +150									°C	

- Notes:**
1. Reverse Recovery Test Conditions: $I_F = 0.5\text{A}$, $I_R = 1.0\text{A}$, $I_{RR} = 0.25\text{A}$
 2. Measured at 1 MHz and Applied Reverse Voltage of 4.0 V D.C.

1S1 thru 1S9

RATINGS AND CHARACTERISTIC CURVES

FIG.1- REVERSE RECOVERY TIME CHARACTERISTIC AND TEST CIRCUIT DIAGRAM

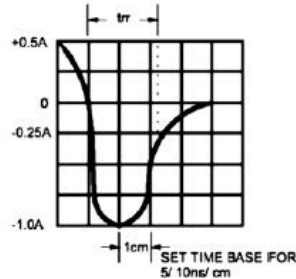
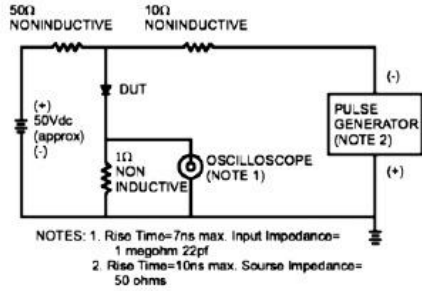


FIG.2- MAXIMUM AVERAGE FORWARD CURRENT DERATING

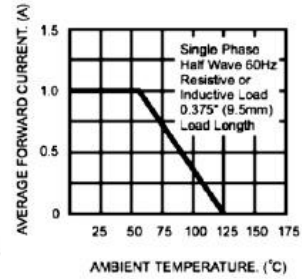


FIG.3- TYPICAL REVERSE CHARACTERISTICS

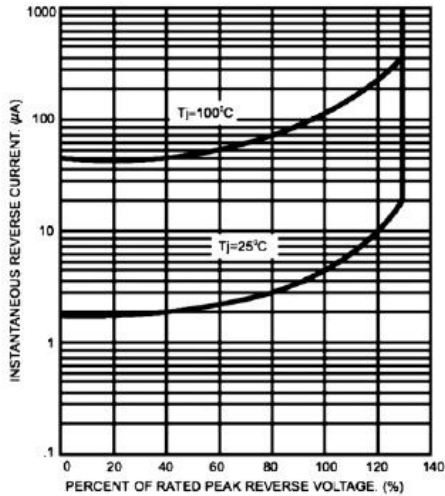


FIG.4- TYPICAL FORWARD CHARACTERISTICS

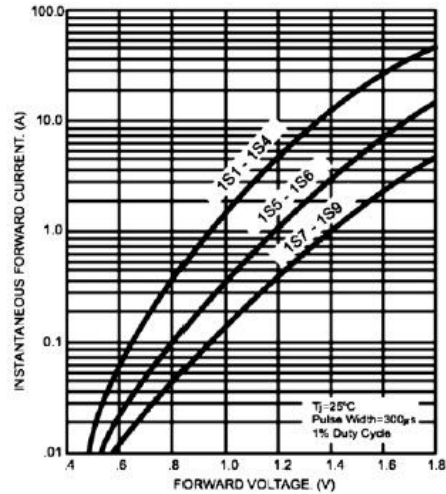


FIG.5- MAXIMUM NON-REPETITIVE FORWARD SURGE CURRENT

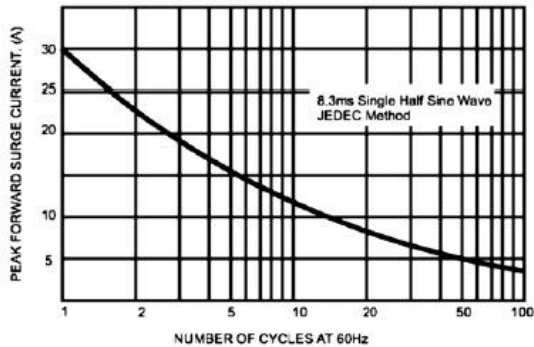


FIG.6- TYPICAL JUNCTION CAPACITANCE

