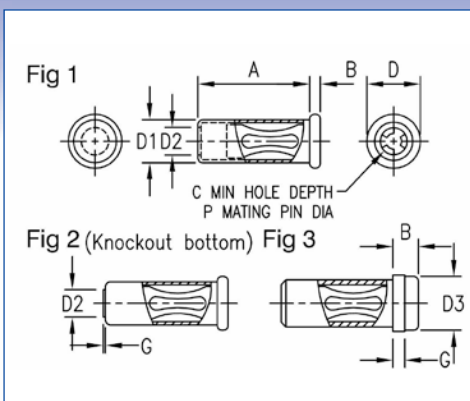


SINGLE POLE SOCKETS - SOLDER MOUNT

Dimensions in inches (mm)



How to order code

450 - XXXX - XX - XX - 00

Basic Part No. | Finish

Material Code Table		
Component	Material	RoHS
Body	Brass	✓
	Copper*	✓
Spring	Beryllium Copper (Heat Treated)	✓

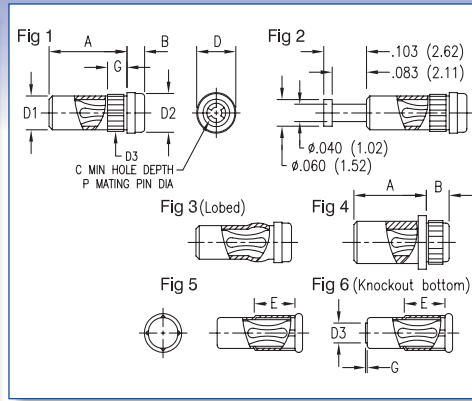
Finish Code Table			
Dash No.	Body Finish	Spring Finish	RoHS
-03	Gold over Nickel	Gold over Nickel	✓
-04	Electro-Tin	Electro-Tin	✓
-06	Electro-Tin	Gold over Nickel	✓

Fig.	Basic Part No.	P	A	B	C	D	D1	D2	D3	G	Mtg. Hole Diameter
1	450-2598 -01	.019 (0.48)	.208 (5.28)	.032 (0.81)	-	.063 (1.60)	.049 (1.24)	.026 (0.66)	-	-	.052 (1.32)
	450-3268 -01	.019 (0.48)	.208 (5.28)	.032 (0.81)	.215 (5.46)	.063 (1.60)	.049 (1.24)	-	-	-	.052 (1.32)
	450-3772 -01*	.019 (0.48)	.212 (5.38)	.015 (0.38)	.207 (5.26)	.060 (1.52)	.049 (1.24)	-	-	-	.052 (1.32)
	-02*	.019 (0.48)	.208 (5.28)	.015 (0.38)	-	.060 (1.52)	.049 (1.24)	.030 (0.76)	-	-	.052 (1.32)
	450-3703 -01*	.025 (0.64)	.142 (3.61)	.020 (0.51)	.141 (3.58)	.074 (1.88)	.053 (1.35)	-	-	-	.055 (1.40)
	450-3718 -01*	.031 (0.79)	.188 (4.78)	.018 (0.46)	.190 (4.83)	.090 (2.29)	.073 (1.85)	-	-	-	.076 (1.93)
	450-7004 -01	.031 (0.79)	.235 (5.97)	.030 (0.76)	.182 (4.62)	.091 (2.31)	.068 (1.73)	-	-	-	.073 (1.85)
	450-3704 -01*	.040 (1.02)	.188 (4.78)	.018 (0.46)	.190 (4.83)	.090 (2.29)	.073 (1.85)	-	-	-	.076 (1.93)
	450-3722 -01	.050 (1.27)	.195 (4.95)	.018 (0.46)	.200 (5.08)	.120 (3.05)	.098 (2.49)	-	-	-	.102 (2.59)
	450-1813 -01	.061 (1.55)	.195 (4.95)	.018 (0.46)	-	.120 (3.05)	.098 (2.49)	.071 (1.80)	-	-	.102 (2.59)
	450-3326 -01	.061 (1.55)	.195 (4.95)	.018 (0.46)	.200 (5.08)	.120 (3.05)	.098 (2.49)	-	-	-	.102 (2.59)
	450-1812 -01	.065 (1.65)	.195 (4.95)	.018 (0.46)	-	.120 (3.05)	.098 (2.49)	.071 (1.80)	-	-	.102 (2.59)
	450-3708 -01	.080 (2.03)	.350 (8.89)	.020 (0.51)	.360 (9.14)	.143 (3.63)	.114 (2.90)	-	-	-	.116 (2.95)
2	450-3716 -01*	.040 (1.02)	.190 (4.83)	.018 (0.46)	.190 (4.83)	.090 (2.29)	.073 (1.85)	.046 (1.17)	-	.013 (0.33)	.076 (1.93)
3	450-3230 -01	.025 (0.64)	.112 (2.84)	.080 (2.03)	.150 (3.81)	.080 (2.03)	.058 (1.47)	-	.073 (1.85)	.030 (0.76)	.062 (1.57)
	450-3293 -01	.025 (0.64)	.102 (2.59)	.080 (2.03)	-	.080 (2.03)	.058 (1.47)	.046 (1.17)	.073 (1.85)	.030 (0.76)	.062 (1.57)
	450-3286 -01	.040 (1.02)	.200 (5.08)	.036 (0.91)	-	.125 (3.18)	.085 (2.16)	.062 (1.57)	.092 (2.34)	.020 (0.51)	.089 (2.26)
	450-3366 -01	.040 (1.02)	.125 (3.18)	.192 (4.88)	.192 (4.88)	.125 (3.18)	.085 (2.16)	-	.091 (2.31)	.032 (0.81)	.089 (2.26)
	450-3388 -01	.040 (1.02)	.200 (5.08)	.036 (0.91)	.190 (4.83)	.125 (3.18)	.085 (2.16)	-	.092 (2.34)	.020 (0.51)	.089 (2.26)
	450-5301 -01	.040 (1.02)	.112 (2.85)	.108 (2.75)	.185 (4.70)	.102 (2.59)	.074 (1.88)	-	.092 (2.34)	.030 (0.76)	.076 (1.93)
	450-3256 -01	.080 (2.03)	.312 (7.92)	.100 (2.54)	-	.188 (4.78)	.142 (3.61)	.104 (2.64)	.143 (3.63)	.047 (1.19)	.144 (3.66)
	450-3398 -01	.080 (2.03)	.312 (7.92)	.100 (2.54)	.333 (8.46)	.188 (4.78)	.142 (3.61)	-	.143 (3.63)	.047 (1.19)	.144 (3.66)

SINGLE POLE SOCKETS - PRESS MOUNT

Dimensions in inches (mm)

See page 91 for recommended Anvil and Punch



How to order code

450 - XXXX - XX - XX - 00

Basic Part No.

Finish

Material Code Table

Component	Material	RoHS
Body	Brass	✓
	Copper*	✓
Spring	Beryllium Copper (Heat Treated)	✓

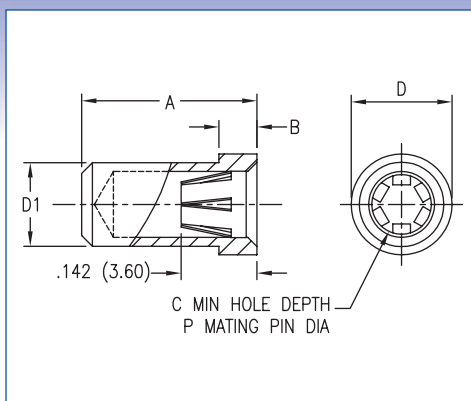
Finish Code Table

Dash No.	Body Finish	Spring Finish	RoHS
-03	Gold over Nickel	Gold over Nickel	✓
-04	Electro-Tin	Electro-Tin	✓
-06	Electro-Tin	Gold over Nickel	✓

Fig.	Basic Part No.	P	A	B	C	D	D1	D2	D3	E	G	Board Thickness	Mtg. Hole Diameter
1	450-3720 -01	.031 (0.79)	.213 (5.41)	.037 (0.94)	.185 (4.70)	.110 (2.79)	.080 (2.03)	.092 (2.34)	.092 (2.34)	-	.070 (1.78)	.062 (1.57)	.089 (2.26)
	450-3954 -01	.040 (1.02)	.140 (3.56)	.080 (2.03)	.185 (4.70)	.102 (2.59)	.072 (1.83)	.092 (2.34)	.081 (2.06)	-	.052 (1.32)	-	.076 (1.93)
	450-3721 -01	.040 (1.02)	.213 (5.41)	.037 (0.94)	.185 (4.70)	.110 (2.79)	.080 (2.03)	.092 (2.34)	.092 (2.34)	-	.070 (1.78)	.062 (1.57)	.089 (2.26)
	450-5348 -01	.040 (1.02)	.090 (2.30)	.129 (3.29)	.185 (4.70)	.102 (2.59)	.072 (1.83)	.092 (2.34)	.081 (2.06)	-	.052 (1.32)	-	.076 (1.93)
2	450-3755 -01	.040 (1.02)	.200 (5.08)	.040 (1.02)	.185 (4.70)	.110 (2.79)	.082 (2.08)	.092 (2.34)	.092 (2.34)	-	.070 (1.78)	.062 (1.57)	.089 (2.26)
3	450-3752 -01	.040 (1.02)	.140 (3.56)	.080 (2.03)	.185 (4.70)	.102 (2.59)	.074 (1.88)	.092 (2.34)	-	-	-	-	.076 (1.93)
4	450-1801 -01	.040 (1.02)	.175 (4.45)	.055 (1.40)	.185 (4.70)	.125 (3.18)	.100 (2.54)	.092 (2.34)	.103 (2.62)	-	-	-	.099 (2.53)
5	450-1804 -01	.061 (1.55)	.195 (4.95)	.018 (0.46)	.200 (5.08)	.120 (3.05)	.098 (2.49)	-	-	.100 (2.54)	-	-	.102 (2.59)
	450-1806 -01	.080 (2.03)	.356 (9.04)	.015 (0.38)	.360 (9.14)	.143 (3.63)	.114 (2.90)	-	-	.150 (3.81)	-	-	.116 (2.95)
	450-3983 -01*	.025 (0.64)	.138 (3.51)	.020 (0.51)	.141 (3.58)	.074 (1.88)	.053 (1.35)	-	-	.080 (2.03)	-	-	.055 (1.40)
	450-3998 -01*	.031 (0.79)	.188 (4.78)	.018 (0.46)	.190 (4.83)	.090 (2.29)	.073 (1.85)	-	-	.100 (2.54)	-	-	.076 (1.93)
	450-3729 -01*	.040 (1.02)	.188 (4.78)	.018 (0.46)	.190 (4.83)	.090 (2.29)	.073 (1.85)	-	-	.100 (2.54)	-	-	.076 (1.93)
6	450-3723 -01*	.040 (1.02)	.188 (4.78)	.018 (0.46)	.190 (4.83)	.090 (2.29)	.073 (1.85)	-	.046 (1.17)	-	.005 (0.13)	-	.076 (1.93)

SINGLE POLE SOCKETS - SOLDER MOUNT, .084-.102 PIN DIA (2.13-2.59)

Dimensions in inches (mm)



How to order code

450 - 8059 - 01 - XX - 00

Basic Part No. | Socket Finish

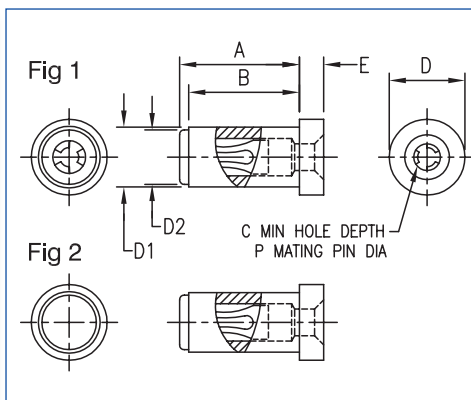
Material Code Table		
Component	Material	RoHS
Body	Brass	✓
Spring	Beryllium Copper (Heat Treated)	✓

Finish Code Table			
Dash No.	Body Finish	Spring Finish	RoHS
-03	Gold over Nickel	Gold over Nickel	✓
-06	Electro-Tin	Gold over Nickel	✓

Basic Part No.	A	B	D	D1	C	P	Mtg. Hole Diameter
450-8059-01	.327 (8.30)	.071 (1.80)	.188 (4.78)	.156 (3.96)	.268 (6.80)	.084-.102 (2.13-2.59)	.160 (4.06)

SINGLE POLE SOCKETS - SOLDER MOUNT, GUIDED ENTRY

Dimensions in inches (mm)



How to order code

450 - 37XX - 01 - XX - 00

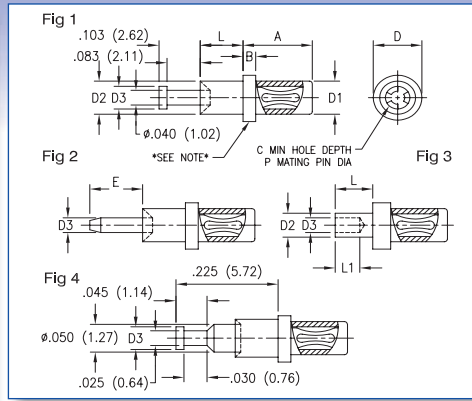
Basic Part No. | Finish

Material Code Table		
Component	Material	RoHS
Body	Brass	✓
Spring	Beryllium Copper (Heat Treated)	✓

Finish Code Table			
Dash No.	Body Finish	Spring Finish	RoHS
-03	Gold over Nickel	Gold over Nickel	✓
-04	Electro-Tin	Electro-Tin	✓
-06	Electro-Tin	Gold over Nickel	✓

Fig.	Basic Part No.	P	A	B	D	D1	D2	C	E	Mtg. Hole Diameter
1	450-3760-01	.040 (1.02)	.193 (4.90)	.182 (4.62)	.125 (3.18)	.100 (2.54)	.092 (2.34)	-	.040 (1.02)	.104 (2.64)
2	450-3783-01	.040 (1.02)	.198 (5.03)	.182 (4.62)	.125 (3.18)	.100 (2.54)	.092 (2.34)	.210 (5.33)	.040 (1.02)	.104 (2.64)

SINGLE POLE SOCKETS - SWAGE MOUNT



Dimensions in inches (mm)
See page 91 for recommended Anvil and Punch

How to order code

450 - XXXX - XX - XX - 00

Basic Part No.

Finish

Material Code Table		
Component	Material	RoHS
Body	Brass	✓
Spring	Beryllium Copper (Heat Treated)	✓

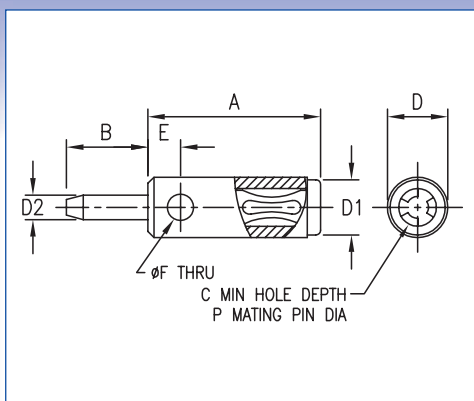
Finish Code Table			
Dash No.	Body Finish	Spring Finish	RoHS
-03	Gold over Nickel	Gold over Nickel	✓
-04	Electro-Tin	Electro-Tin	✓
-06	Electro-Tin	Gold over Nickel	✓

Fig.	Basic Part No.	L	Board Thickness	P	A	B	C	D	D1	D2	D3	E	L1	Mtg. Hole Diameter
1	450-3375 -02	.094 (2.39)	.062 (1.57)	.025 (0.64)	.106 (2.69)	.062 (1.57)	.141 (3.58)	.125 (3.18)	.077 (1.96)	.093 (2.36)	.062 (1.57)	-	-	.094 (2.39)
	-03	.125 (3.18)	.094 (2.39)		.075 (1.91)	.031 (0.79)								
	-04	.156 (3.96)	.125 (3.18)											
	-05	.219 (5.56)	.188 (4.76)											
	450-7005 -01*	.062 (1.57)	.031 (0.79)	.031 (0.79)	.193 (4.90)	.032 (0.81)	.183 (4.65)	.125 (3.18)	.092 (2.34)	.093 (2.36)	.066 (1.68)	-	-	.094 (2.39)
	-02*	.094 (2.39)	.062 (1.57)											
	-03*	.125 (3.18)	.094 (2.39)											
	-04*	.156 (3.96)	.125 (3.18)											
	-05*	.219 (5.56)	.188 (4.76)											
	450-3320 -01	.062 (1.57)	.031 (0.79)	.040 (1.02)	.193 (4.90)	.032 (0.81)	.190 (4.83)	.125 (3.18)	.092 (2.34)	.093 (2.36)	.066 (1.68)	-	-	.094 (2.39)
	-02	.094 (2.39)	.062 (1.57)											
	-03	.125 (3.18)	.094 (2.39)											
-04	.156 (3.96)	.125 (3.18)												
-05	.219 (5.56)	.188 (4.76)												
450-3324 -01	.058 (1.47)	.031 (0.79)	.061 (1.55)	.230 (5.84)	.050 (1.27)	.204 (5.18)	.188 (4.78)	.124 (3.15)	.141 (3.58)	.066 (1.68)	-	-	.144 (3.66)	
-02	.089 (2.26)	.062 (1.57)												
-03	.120 (3.05)	.094 (2.39)												
-04	.151 (3.84)	.125 (3.18)												
450-3754 -01	.062 (1.57)	.031 (0.79)	.080 (2.03)	.440 (11.18)	-	.375 (9.53)	-	.144 (3.66)	.093 (2.36)	.066 (1.68)	-	-	.094 (2.39)	
-02	.094 (2.39)	.062 (1.57)												
-03	.125 (3.18)	.094 (2.39)												
-04	.156 (3.96)	.125 (3.18)												
2	450-3263 -01	.051 (1.30)	.031 (0.79)	.025 (0.64)	.180 (4.57)	.045 (1.14)	.144 (3.66)	.094 (2.39)	.074 (1.88)	.058 (1.47)	.025 (0.64)	.125 (3.18)	-	.062 (1.57)
	-02	.082 (2.08)	.062 (1.57)											
	-03	.113 (2.87)	.094 (2.39)											
	-04	.145 (3.68)	.125 (3.18)											
	450-3310 -01	.062 (1.57)	.031 (0.79)	.040 (1.02)	.190 (4.83)	.032 (0.81)	.190 (4.83)	.125 (3.18)	.094 (2.39)	.093 (2.36)	.040 (1.02)	.187 (4.75)	-	.094 (2.39)
	-02	.094 (2.39)	.062 (1.57)											
	-03	.125 (3.18)	.094 (2.39)											
	-04	.156 (3.96)	.125 (3.18)											
3	450-3394 -01	.062 (1.57)	.031 (0.79)	.025 (0.64)	.190 (4.88)	.045 (1.14)	.144 (3.66)	.094 (2.39)	.074 (1.88)	.058 (1.47)	.040 (1.02)	-	.040 (1.02)	.062 (1.57)
	-02	.094 (2.39)	.062 (1.57)										.062 (1.57)	
	-03	.125 (3.18)	.094 (2.39)											
	-04	.156 (3.96)	.125 (3.18)											
	450-3756 -01	.062 (1.57)	.031 (0.79)	.040 (1.02)	.230 (5.84)	.062 (1.57)	.180 (4.57)	.125 (3.18)	.091 (2.31)	.064 (1.63)	.040 (1.02)	-	.040 (1.02)	.067 (1.70)
	-02	.094 (2.39)	.062 (1.57)										.062 (1.57)	
	-03	.125 (3.18)	.094 (2.39)											
	-04	.156 (3.96)	.125 (3.18)											
4	450-3266 -01	.041 (1.04)	.031 (0.79)	.019 (0.48)	.062 (1.57)	.025 (0.64)	.210 (5.33)	.094 (2.39)	.062 (1.57)	.072 (1.83)	.040 (1.02)	-	-	.076 (1.93)
	-02	.072 (1.83)	.062 (1.57)											
	-03	.104 (2.64)	.094 (2.39)											
	-04	.135 (3.43)	.125 (3.18)											

*Knurl is for part identification and to distinguish from similar socket, 450-3320 which is for .040 (1.02mm) diameter

SINGLE POLE SOCKETS - STACKABLE

Dimensions in inches (mm)



How to order code

450 - XXXX - 01 - 03 - XX

Basic Part No. | Insulator Colour | Socket Finish

Material Code Table		
Component	Material	RoHS
Body	Brass	✓
Spring	Beryllium Copper (Heat Treated)	✓
Insulation	Polyolefin Plastic	✓

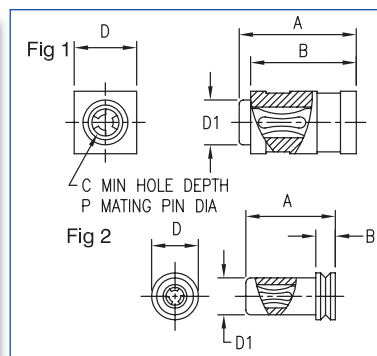
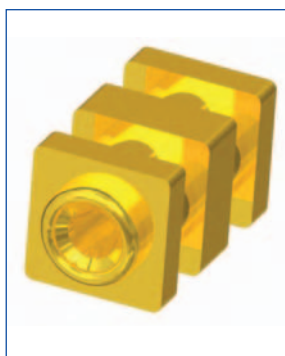
Finish Code Table			
Dash No.	Body Finish	Spring Finish	RoHS
-03	Gold over Nickel	Gold over Nickel	✓

Insulation Colour Code Table	
Dash No.	Colour
-00	None
-10	Black

Basic Part No.	A	B	P	C	D	D1	D2	E	F
450-3327 -01	.235 (5.97)	.125 (3.18)	.040 (1.02)	.190 (4.83)	.094 (2.39)	.090 (2.29)	.025 (0.64)	-	-
Also available with black polyolefin sleeve as 450-3289-01-03-10									
450-3278 -01	.425 (10.80)	.188 (4.78)	.080 (2.03)	.325 (8.26)	.156 (3.96)	.142 (3.61)	.040 (1.02)	-	-
Also available with black polyolefin sleeve as 450-3279-01-03-10									
450-3078 -01	.305 (7.75)	.125 (3.18)	.025 (0.64)	.144 (3.66)	.094 (2.39)	.074 (1.88)	.025 (0.64)	.053 (1.35)	.043 (1.09)
Also available with black polyolefin sleeve as 450-3390-01-03-10									
450-3302 -01	.323 (8.20)	.188 (4.78)	.040 (1.02)	.190 (4.83)	.094 (2.39)	.090 (2.29)	.040 (1.02)	.053 (1.35)	.043 (1.09)
Also available with black polyolefin sleeve as 450-3301-01-03-10									

SINGLE POLE SOCKETS - SURFACE MOUNT

Dimensions in inches (mm)



How to order code

450 - XXXX - 01 - XX - 00

Basic Part No. | Socket Finish

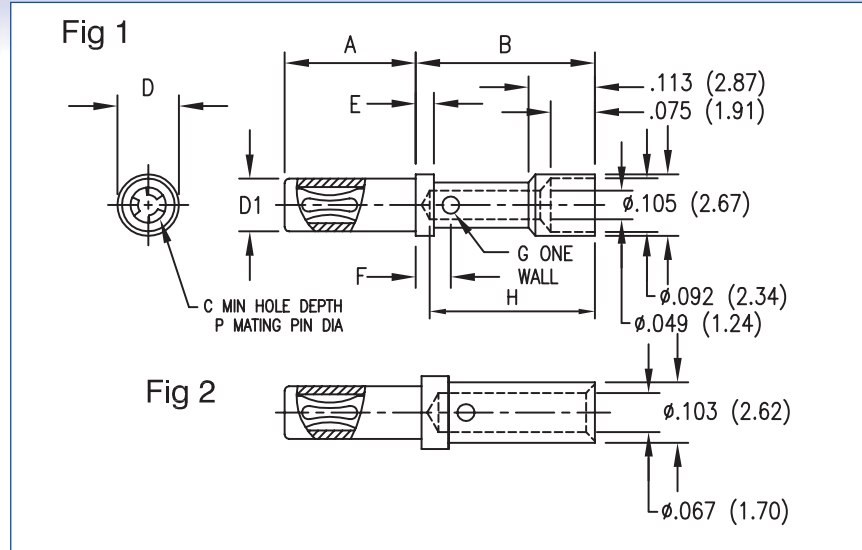
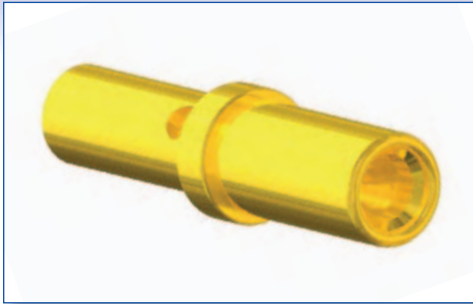
Material Code Table		
Component	Material	RoHS
Body	Brass	✓
Spring	Beryllium Copper (Heat Treated)	✓

Finish Code Table			
Dash No.	Body Finish	Spring Finish	RoHS
-03	Gold over Nickel	Gold over Nickel	✓
-06	Electro-Tin	Gold over Nickel	✓

Fig.	Basic Part No.	A	B	D	D1	C	P
1	450-8340 -01	.235 (5.97)	.212 (5.38)	.125 (3.18)	.090 (2.29)	.190 (4.83)	.040 (1.02)
2	450-8325 -01	.180 (4.57)	.040 (1.02)	.094 (2.39)	.074 (1.88)	.141 (3.58)	.025 (0.64)

SINGLE POLE SOCKETS - PATCHCORD CRIMP

Dimensions in inches (mm)
See page 91 for recommended Crimping Pliers



How to order code
450 - XXXX - 01 - XX - XX

Basic Part No. | Insulator Colour | Socket Finish

Material Code Table		
Component	Material	RoHS
Body	Brass	✓
Spring	Beryllium Copper (Heat Treated)	✓
Insulation	Polyolefin Plastic	✓

Finish Code Table			
Dash No.	Body Finish	Spring Finish	RoHS
-03	Gold over Nickel	Gold over Nickel	✓
-04	Electro-Tin	Electro-Tin	✓
-06	Electro-Tin	Gold over Nickel	✓

Insulation Colour Code Table	
Dash No.	Colour
-00	None
-10	Black

Fig.	Basic Part No.	P	A	B	C	D	D1	E	F	G	H
1	450-3367 -01	.040 (1.02)	.224 (5.69)	.306 (7.77)	.185 (4.70)	.105 (2.67)	.091 (2.29)	.031 (0.79)	.060 (1.52)	.029 (0.74)	.282 (7.16)
	Also available with black polyolefin sleeve as 450-3378-01-XX-10										
	450-1807 -01	.080 (2.03)	.420 (10.67)	.306 (7.77)	.375 (9.53)	.170 (4.32)	.143 (3.63)	.031 (0.79)	.060 (1.52)	.029 (0.74)	.282 (7.16)
2	450-0016 -01	.061 (1.55)	.234 (5.94)	.296 (7.52)	.190 (4.83)	.141 (3.58)	.119 (3.02)	.046 (1.17)	.076 (1.93)	.039 (0.99)	.267 (6.78)
	Also available with black polyolefin sleeve as 450-3413-01-XX-10										

450-3367/450-3378/450-1807

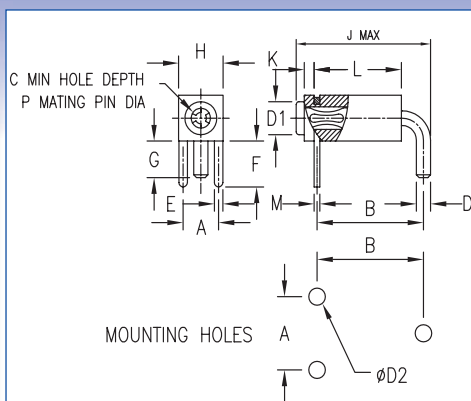
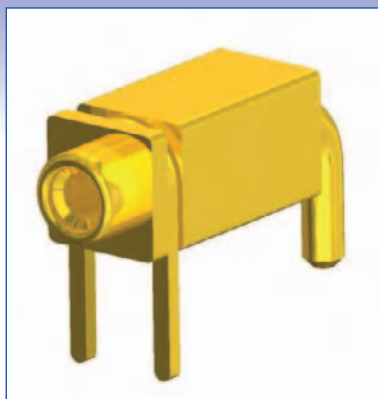
Recommended hook-up wire size - #22AWG, 7 strands #30 AWG copper wire PTFE insulated
Sockets also accommodate #20 AWG, 7 strands #28 AWG copper wire
#24 AWG, 7 strands #32 AWG copper wire

450-0016/450-3413

Recommended hook-up wire size - #20 AWG, 7 strands #28 AWG copper wire PTFE insulated
Sockets also accommodate #18 AWG, 7 strands #26 AWG copper wire
#16 AWG, 19 strands #29 AWG copper wire

SINGLE POLE SOCKETS - PCB MOUNT SOLDER

Dimensions in inches (mm)



How to order code
450 - 3XXX - 01 - XX - 00
 Basic Part No. | Finish

Material Code Table		
Component	Material	RoHS
Body	Brass	✓
Spring	Beryllium Copper (Heat Treated)	✓
Clip	Brass	✓

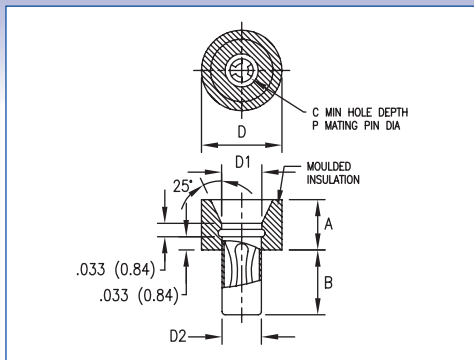
Finish Code Table				
Dash No.	Body Finish	Spring Finish	Clip	RoHS
-03	Gold over Nickel	Gold over Nickel	Gold over Nickel	✓
-04	Electro-Tin	Electro-Tin	Electro-Tin	✓
-06	Electro-Tin	Gold over Nickel	Electro-Tin	✓

Basic Part No.	P	A	B	C	D	D1	D2	E
450-3422 -01	.040 (1.02)	.100 (2.54)	.300 (7.62)	.211 (5.36)	.040 (1.02)	.092 (2.34)	.047 (1.19)	.024 (0.61)
450-3888 -01	.080 (2.03)	.200 (5.08)	.400 (10.16)	.325 (8.26)	.056 (1.42)	.142 (3.61)	.062 (1.57)	.046 (1.17)

Basic Part No.	F	G	H	J	K	L	M
450-3422 -01	.125 (3.18)	.100 (2.54)	.125 (3.18)	.416 (10.57)	.028 (0.71)	.229 (5.82)	.016 (0.41)
450-3888 -01	.218 (5.54)	.156 (3.96)	.188 (4.78)	.537 (13.64)	.038 (0.97)	.325 (8.26)	.020 (0.51)

SINGLE POLE SOCKETS - SOLDER MOUNT - MOULDED GUIDED ENTRY

Dimensions in inches (mm)



How to order code

450 - 1826 - 01 - 03 - 20

Basic Part No. | Insulator Colour | Socket Finish

Material Code Table		Material
Jack:	Body	Brass
	Spring	Beryllium Copper (Heat Treated)
Insulator		Nylon

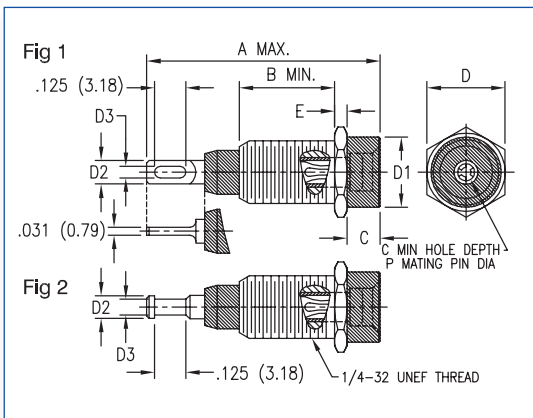
Finish Code Table			
Dash No.	Body Finish	Spring Finish	RoHS
-03	Gold over Nickel	Gold over Nickel	✓

Insulation Colour Code Table	
Dash No.	Colour
-20	Natural

Basic Part No.	P	A	B	D	D1	D2	C	Mtg. Hole Diameter
450-1826-01	.061 (1.55)	.125 (3.18)	.162 (4.11)	.200 (5.08)	.093 (2.36)	.098 (2.49)	.250 (6.35)	.102 (2.59)

SINGLE POLE SOCKETS - INSULATED - THREAD MOUNT

Dimensions in inches (mm)



How to order code

450 - XXXX - 01 - 03 - XX

Basic Part No. | Insulator Colour | Terminal Finish

Material Code Table		
Component	Material	RoHS
Insulator (450-3358 & 450-3381)	Nylon	✓
Insulator (450-3359 & 450-3382)	PTFE	✓
Metal Sleeve	Brass	✓
Socket Body	Brass	✓
Socket Spring	Beryllium Copper (Heat Treated)	✓
Mounting Hex Nut	Brass	✓
Internal Tooth Lockwasher	Phosphor Bronze	✓

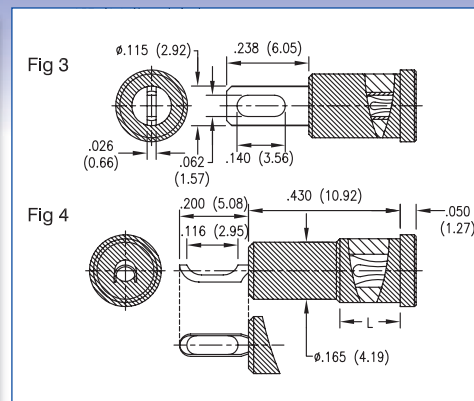
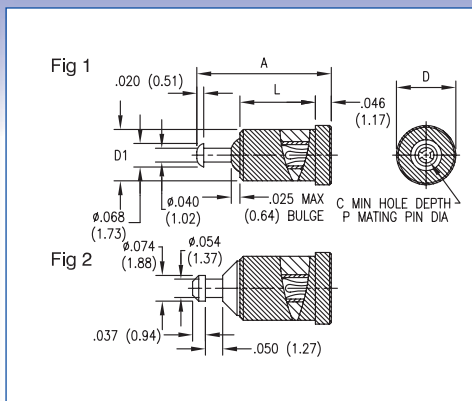
Finish Code Table							
Dash No.	Socket Body Finish	Socket Spring Finish	Metal Sleeve Finish	Mtg. Hex Nut Finish	Lockwasher Finish	RoHS	
-03	Gold over Nickel	Gold over Nickel	Nickel	Nickel	Nickel	✓	

Insulation Colour Code Table	
Dash No.	Colour
-10	Black
-12	Red*
-16	Blue
-19	White

Fig.	Basic Part No.	A	B	C	D	D1	D2	D3	E	C	P	Dielectric Withstand Voltage (rms)	Insulator
1	450-3358 -01	1.000 (25.4)	.375 (9.53)	.131 (3.33)	.312 (7.92)	.281 (7.14)	.093 (2.36)	.047 (1.19)	.050 (1.27)	.540 (13.72)	.080 (2.03)	3000	Nylon
	450-3359 -01	1.000 (25.4)	.375 (9.53)	.131 (3.33)	.312 (7.92)	.281 (7.14)	.093 (2.36)	.047 (1.19)	.050 (1.27)	.540 (13.72)	.080 (2.03)	3000	PTFE
2	450-3381 -01	1.000 (25.4)	.375 (9.53)	.131 (3.33)	.312 (7.92)	.281 (7.14)	.090 (2.29)	.062 (1.57)	.050 (1.27)	.540 (13.72)	.080 (2.03)	3000	Nylon
	450-3382 -01	1.000 (25.4)	.375 (9.53)	.131 (3.33)	.312 (7.92)	.281 (7.14)	.090 (2.29)	.062 (1.57)	.050 (1.27)	.540 (13.72)	.080 (2.03)	3000	PTFE

Mounting Hardware supplied un-assembled. *Red PTFE is NOT RoHS compliant

SINGLE POLE SOCKETS - INSULATED, PRESS MOUNT



How to order code

450 - XXXX - 01 - XX - XX

Basic Part No. | Insulator Colour | Socket Finish

Dimensions in inches (mm)
See page 89 for Mounting Instructions

Material Code Table		
Component	Material	RoHS
Insulator	PTFE	✓*
Socket Body	Brass	✓
Socket Spring	Beryllium Copper (Heat Treated)	✓

Finish Code Table			
Dash No.	Body Finish	Spring Finish	RoHS
-03	Gold over Nickel	Gold over Nickel	✓
-04	Electro-Tin	Electro-Tin	✓
-06	Electro-Tin	Gold over Nickel	✓

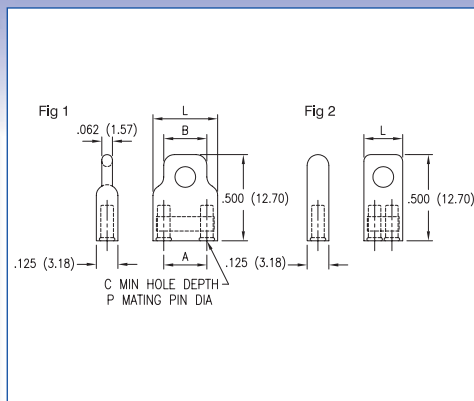
Insulation Colour Code Table	
Dash No.	Colour
-10	Black
-12	Red*
-19	White

Fig.	Basic Part No.	A	For Panel Thickness	C	D	D1	L	P	Flashover at Sea Level (Vrms)	Capacitance (pf)	Mtg. Hole Diameter
1	450-4352 -01	.390 (9.91)	.031 (0.79) to .094 (2.39)	.190 (4.83)	.172 (4.37)	.149 (3.78)	.219 (5.56)	.040 (1.02)	2500	.7	.136 (3.45)
	450-4353 -01	.390 (9.91)	.031 (0.79) to .094 (2.39)	.190 (4.83)	.219 (5.56)	.185 (4.70)	.219 (5.56)	.040 (1.02)	2500	.6	.172 (4.37)
2	450-5237 -01	.413 (10.49)	.031 (0.79) to .094 (2.39)	.214 (5.44)	.219 (5.56)	.185 (4.70)	.242 (6.15)	.050 (1.27)	2500	.7	.172 (4.37)
	450-3374 -01	.453 (11.51)	.031 (0.79) to .230 (5.84)	.340 (8.64)	.219 (5.56)	.185 (4.70)	.270 (6.86)	.080 (2.03)	1800	.7	.172 (4.37)
3	450-4354 -01	.688 (17.48)	.031 (0.79) to .125 (3.18)	.332 (8.43)	.250 (6.35)	.216 (5.49)	.400 (10.16)	.080 (2.03)	2000	1.2	.203 (5.16)
4	450-4355 -01	.680 (17.27)	.031 (0.79) to .125 (3.18)	.350 (8.89)	.219 (5.56)	.185 (4.70)	.175 (4.45)	.080 (2.03)	2000	1.0	.172 (4.37)

*Red PTFE is NOT RoHS compliant

SHORTING LINKS - SOCKET

Dimensions in inches (mm)



How to order code

450 - XXXX - 01 - 06 - XX

Basic Part No.

Insulator Colour
Socket Finish

Material Code Table			
Component	Material	RoHS	
Insulation	Polypropylene	✓	
Socket:	Body	Copper	✓
	Spring	Beryllium Copper (Heat Treated)	✓
Strap	Bronze	✓	

Finish Code Table				
Dash No.	Socket Body Finish	Spring Finish	Strap Finish	RoHS
-06	Electro-Tin	Gold Plated	Electro-Tin	✓

Insulation Colour Code Table	
Dash No.	Colour
-10	Black
-12	Red
-16	Blue

Fig.	Basic Part No.	P	A	B	C	L
1	450-3775 -01	.040 (1.02)	.200 (5.08)	.250 (6.35)	.190 (4.83)	.375 (9.53)
	450-3776 -01	.040 (1.02)	.400 (10.16)	.432 (10.97)	.190 (4.83)	.620 (15.75)
2	450-4774 -01	.031 (0.79)	.100 (2.54)	-	.190 (4.83)	.240 (6.10)
	450-4775 -01	.040 (1.02)	.100 (2.54)	-	.190 (4.83)	.240 (6.10)