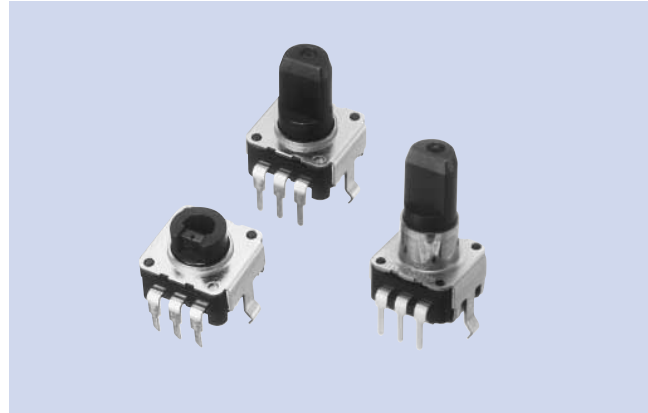


# Rotary Encoder Switches SRP Series

## FEATURES

1. 10×10mm outline size. 5mm in height.  
A small and thin encoder switch with excellent feeling.
2. 12 and 24 detents available with D cut shaft and through shaft.
3. Permits direct mounting PWB and soldering.

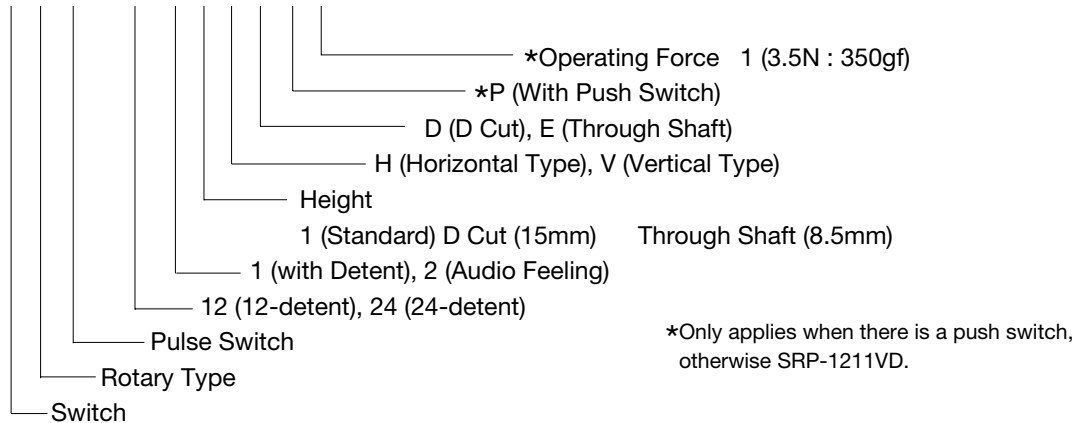


## USES

1. Manual control of digital equipment. For selecting and setting of volume, function and character setting.
2. Tuning and timer setting control of digital circuits.

## MODEL NAME CODE

**S R P - 1 2 1 1 V D P 1**



## SPECIFICATIONS

Electrical Characteristics	Rating	0.5mA, 5V DC
	Contact Resistance	1Ω or less
	Insulation Resistance	10MΩ or more
	Withstand Voltage	1 minute at 50V AC
	Bouncing	3mS or less
Mechanical Characteristics	Rotational torque	10±5mN·m (98±49gf·cm)
Life		40,000cycles

## PUSH SWITCH SPECIFICATIONS

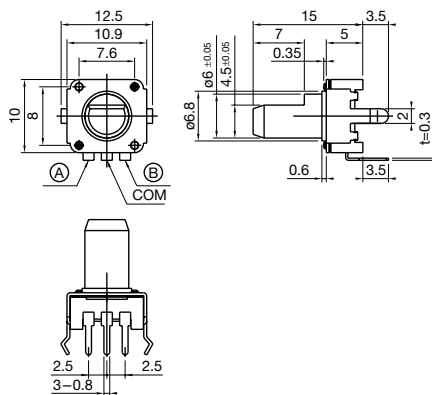
Electrical Characteristics	Rating	DC5V, 0.5mA
	Contact Resistance	100mA or less
	Insulation Resistance	100MΩ or more
	Withstand Voltage	1 minute at 50V AC
	Bouncing	10msec or less
Mechanical Characteristics	Stroke	0.5±0.3mm
	Operating Force	3.5±1.5N (350±150gf)
Life		50,000cycles

## TYPE

Model Name Code	Order Number	Shaft Shape	No. of Positions	Rotational Torque	Pcs
SRP-1211VD	R66 5758	D cut	12	10±5mN·m	2,000
SRP-2411VD	R66 5760	D cut	24	10±5mN·m	2,000
SRP-1211VE	R66 5761	Through	12	10±5mN·m	2,000
SRP-2411VE	R66 5762	Through	24	10±5mN·m	2,000
SRP-1211VDP1	R66 5827	D cut	12	10±5mN·m	2,000
SRP-2411VDP1	R66 5828	D cut	24	10±5mN·m	2,000

## DIMENSIONS

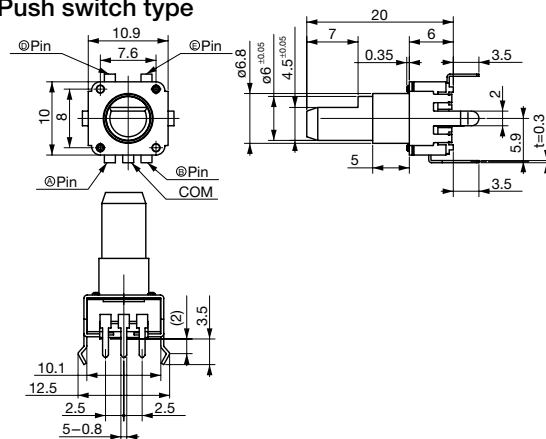
### D cut type



SRP-1211VD/SRP-2411VD

Unit : mm

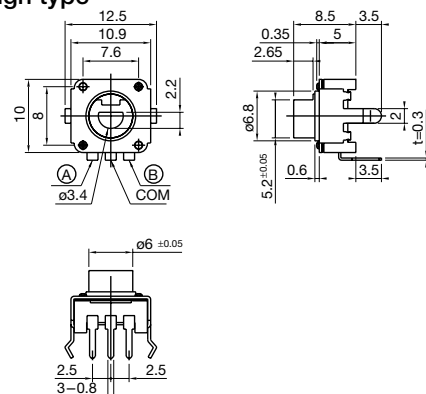
### Push switch type



SRP-1211VDP1/SRP-2411VDP1

Unit : mm

### Through type



SRP-1211VE/SRP-2411VE

Unit : mm

