

SPECIFICATION

DEVICE NAME : BIPOLAR TRANSISTOR
 TYPE NAME : 2SD2047R
 SPEC. No. :
 DATE :

Fuji Electric Co.,Ltd.

This Specification is subject to change without notice.

	DATE	NAME	APPROVED	Fuji Electric Co.,Ltd.		
DRAWN				DWG. NO.	1/8	
CHECKED						

Y 025T-R-004a

Ratings and Characteristics of Fuji Power Transistor

2SD2047R

1. Outline Drawings T0-3PF (Full Molded Package)
2. Absolute Maximum Ratings ($T_c=25^\circ\text{C}$)

Item	Symbols	Maximum Rating	Unit
Collector-Base Voltage	V_{CB0}	1500	V
Collector-Emitter Voltage	V_{CE0}	700	
Emitter-Base Voltage	V_{EB0}	10	
Collector Current	I_c	5	A
Collector Current	I_c pulse	10	
Base Current (Continuous)	I_b	3	
Collector Power Dissipation	P_c	80	W
Operating Temperature	T_j	+150	°C
Storage Temperature	T_{stg}	-55 ~ +150	

3. Electrical Characteristics ($T_c=25^\circ\text{C}$)

Characteristics	Symbol	Conditions	Min	Max	Unit
Collector-Base Voltage	V_{CB0}	$I_{CB0} = 1\text{mA}$	1500		V
Collector-Emitter Voltage	V_{CE0}	$I_{CE0} = 10\text{mA}$	700		
Emitter-Base Voltage	V_{EB0}	$I_{EB0} = 1\text{mA}$	10		
Collector Cutoff Current	I_{CB0}	$V_{CB0} = 750\text{V}$		50	μA
		$V_{CB0} = 1500\text{V}$		1.0	mA
DC Current Gain	h_{FE}	$I_c = 1\text{A}, V_{CE} = 5\text{V}$	18	50	
Collector Saturation Voltage	$V_{CE(sat)}$	$I_c = 4.5\text{A}$		2.0	V
Base-Emitter Saturation Voltage	$V_{BE(sat)}$	$I_b = 2.0\text{A}$		1.5	
Switching Time	t_{on}	$I_c = 2.5\text{A}$		1.0	μs
	t_{stg}	$I_{B1} = +0.25\text{A}$		3.0	
	t_f	$I_{B2} = -0.5\text{A}$		0.5	

4. Thermal Characteristics

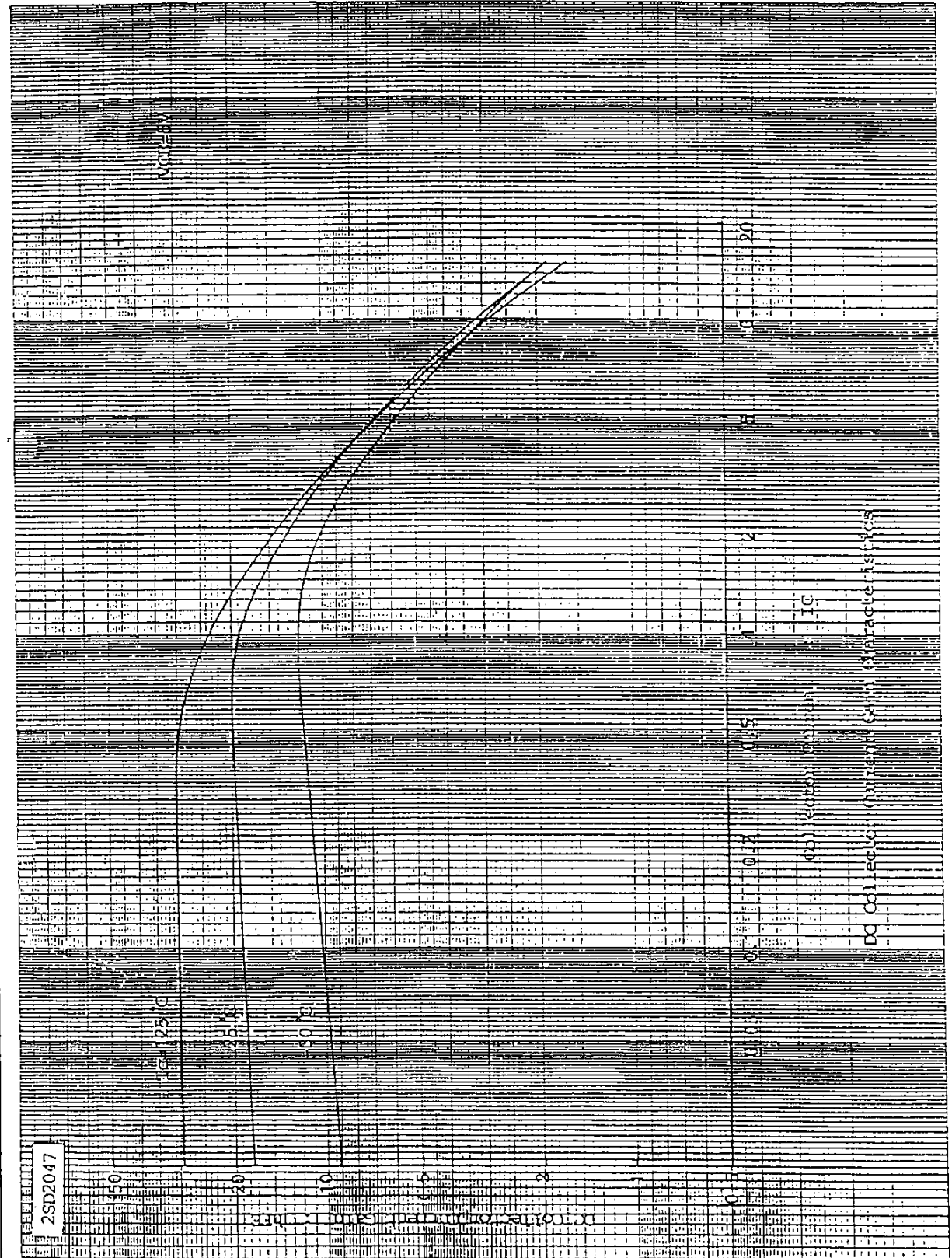
Characteristics	Symbol	Conditions	Min	Max	Unit
Thermal Resistance	$R_{th(j-c)}$	Junction to Case		1.55	°C/W

Fuji Electric Co., Ltd.

DWG. NO.

2/8

Y 0257-R-003a



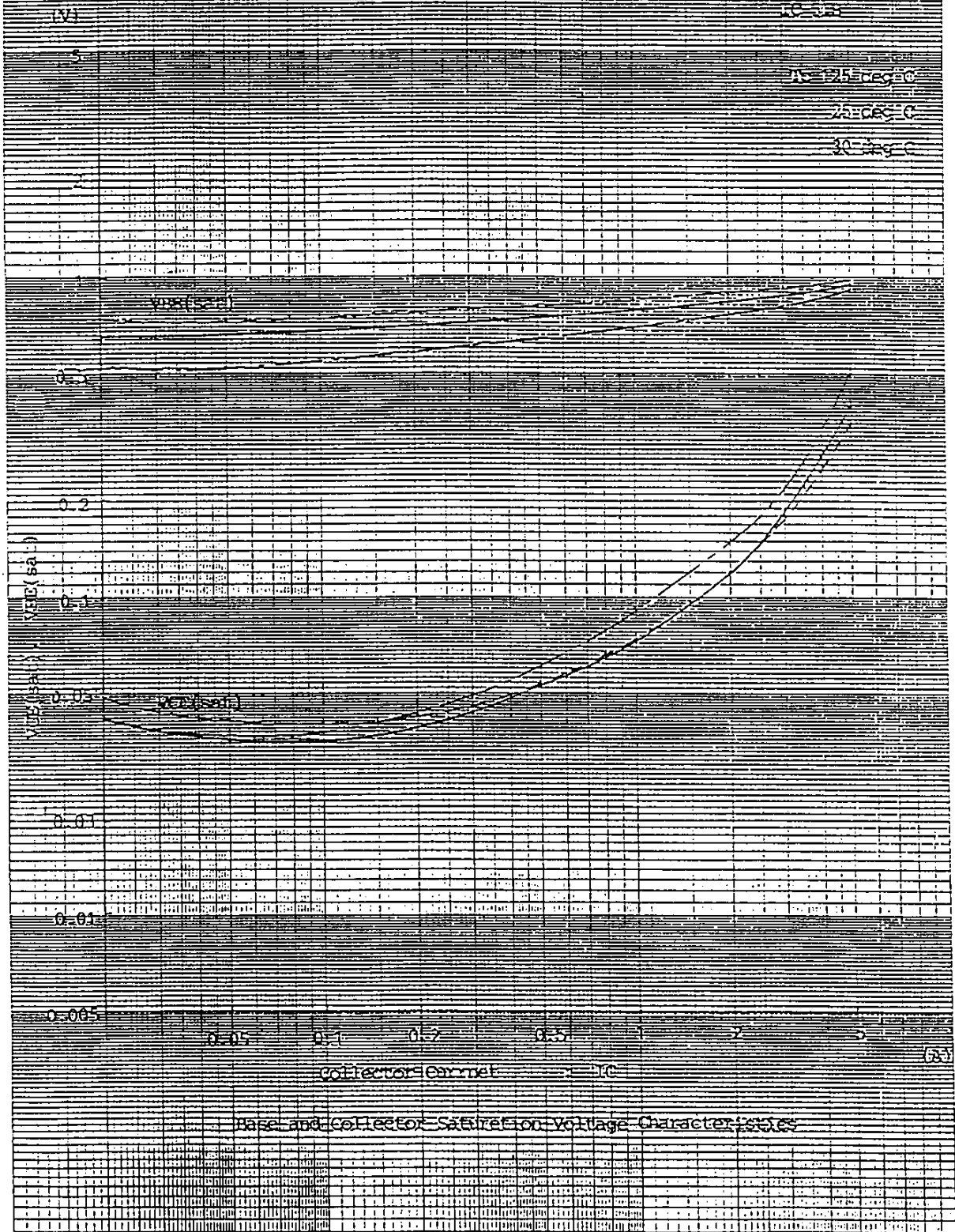
Fuji Electric Co., Ltd.

DWG. NO.

3/8

Y 0257-R-003a

2SD2047



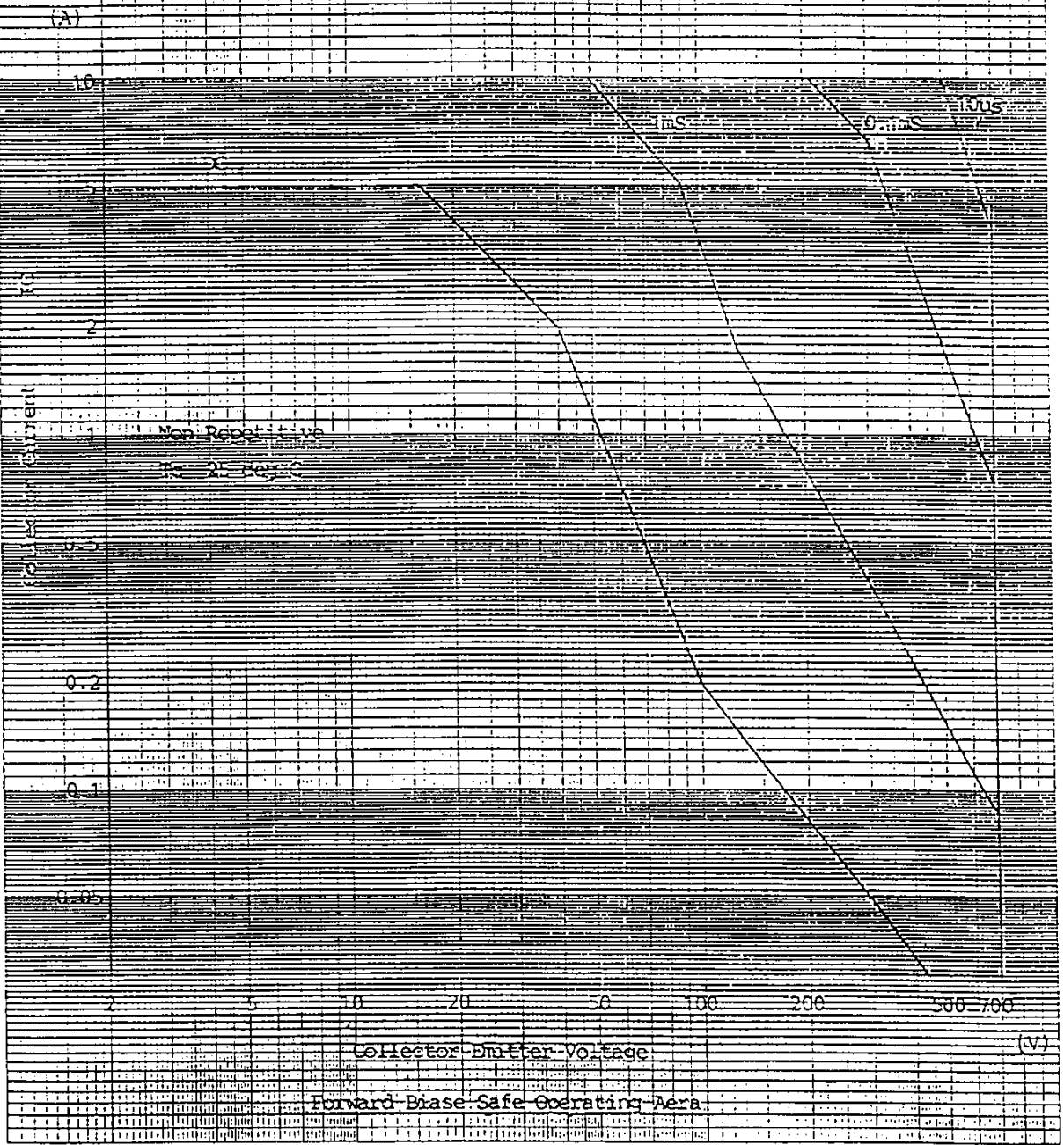
Fuji Electric Co., Ltd.

DWG. NO.

4/8

Y 0257-R-003a

2SD2047

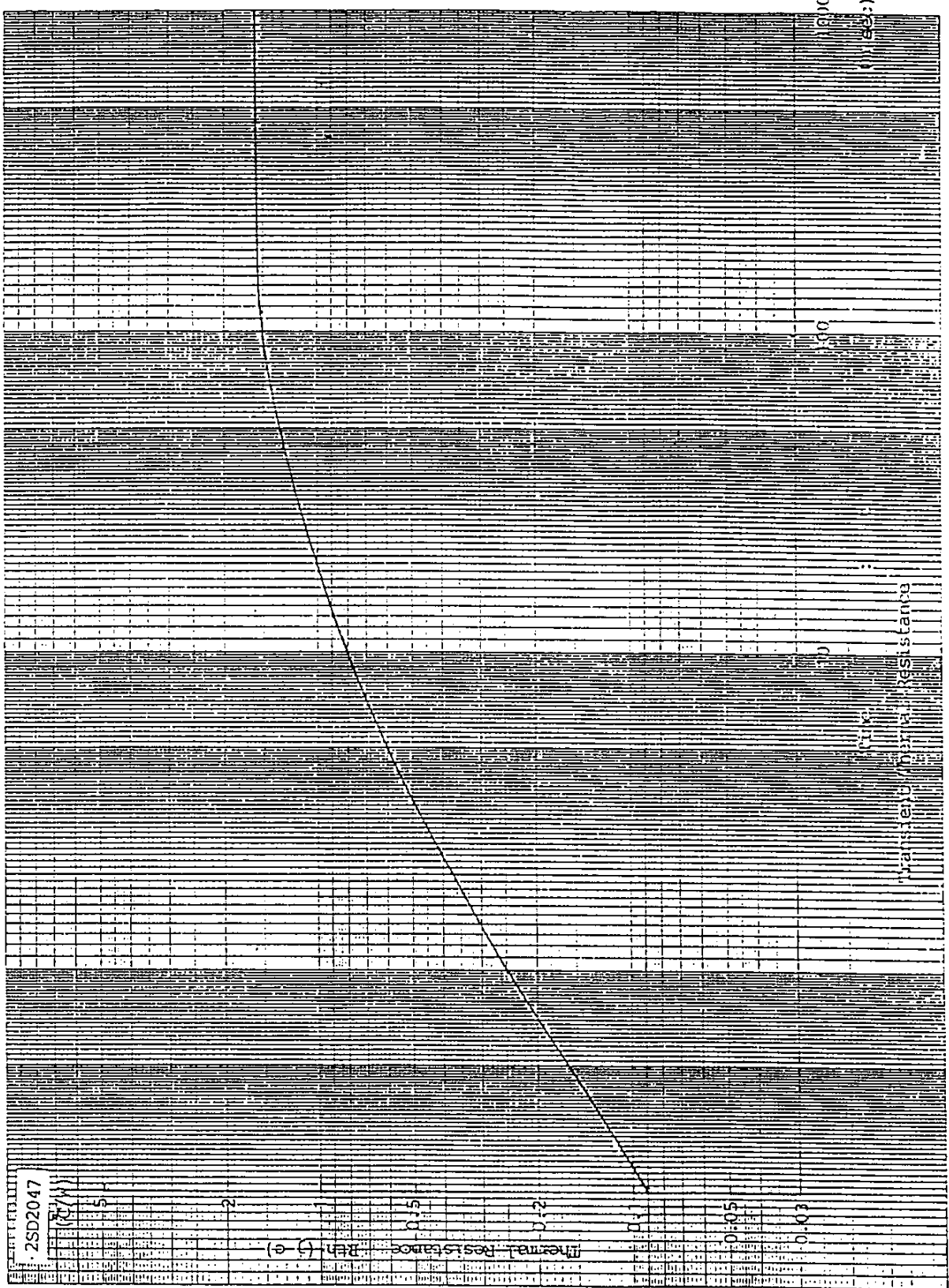


Fuji Electric Co., Ltd

DWG. NO.

5/8

Y 0257-R-003a



2SD2047

R_c/W

5

2

1

0.5

0.2

0.1

0.05

0.03

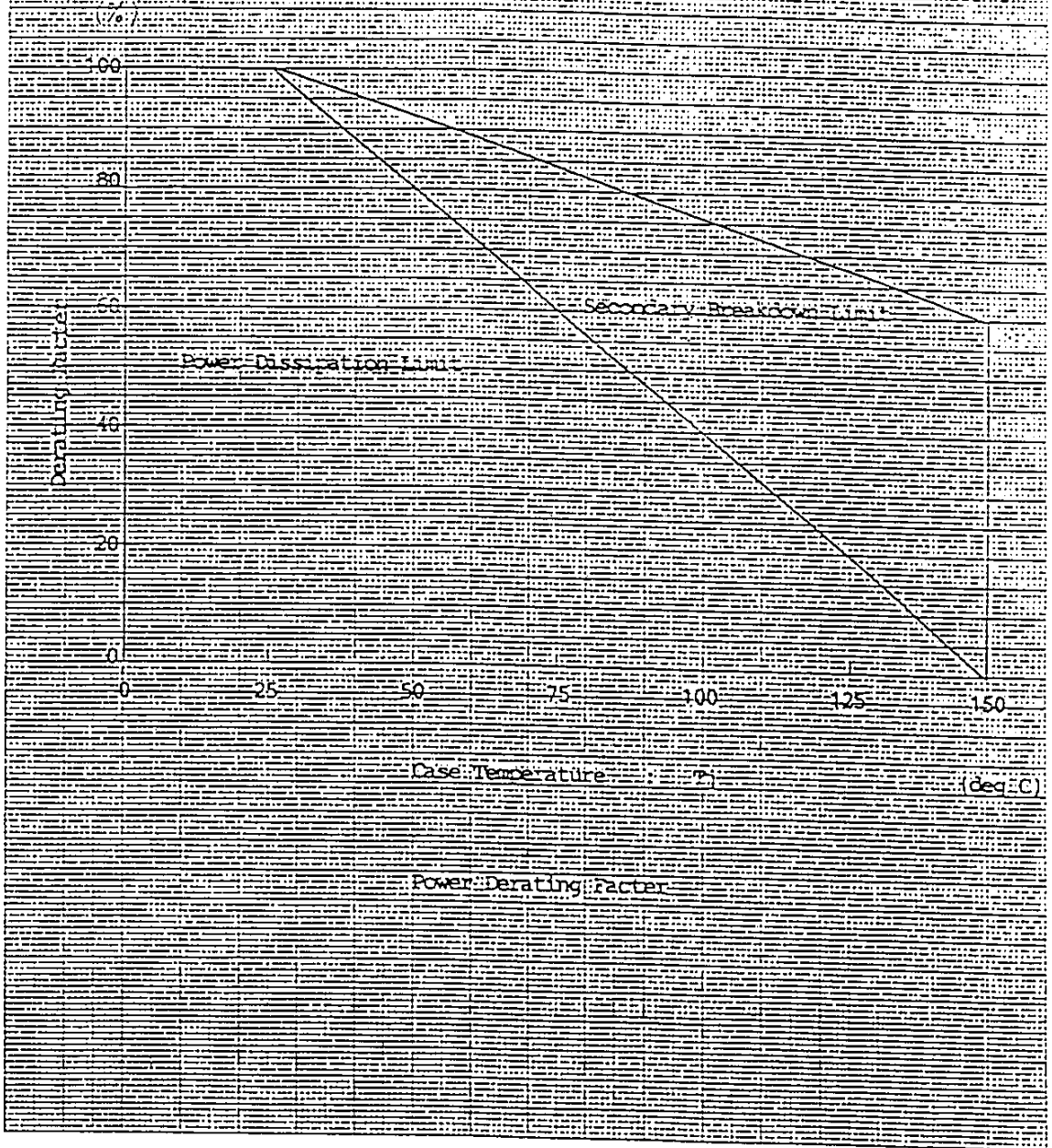
Fuji Electric Co., Ltd.

DWG. NO.

6/8

Y 0257-R-003a

2SD2047



Fuji Electric Co., Ltd.

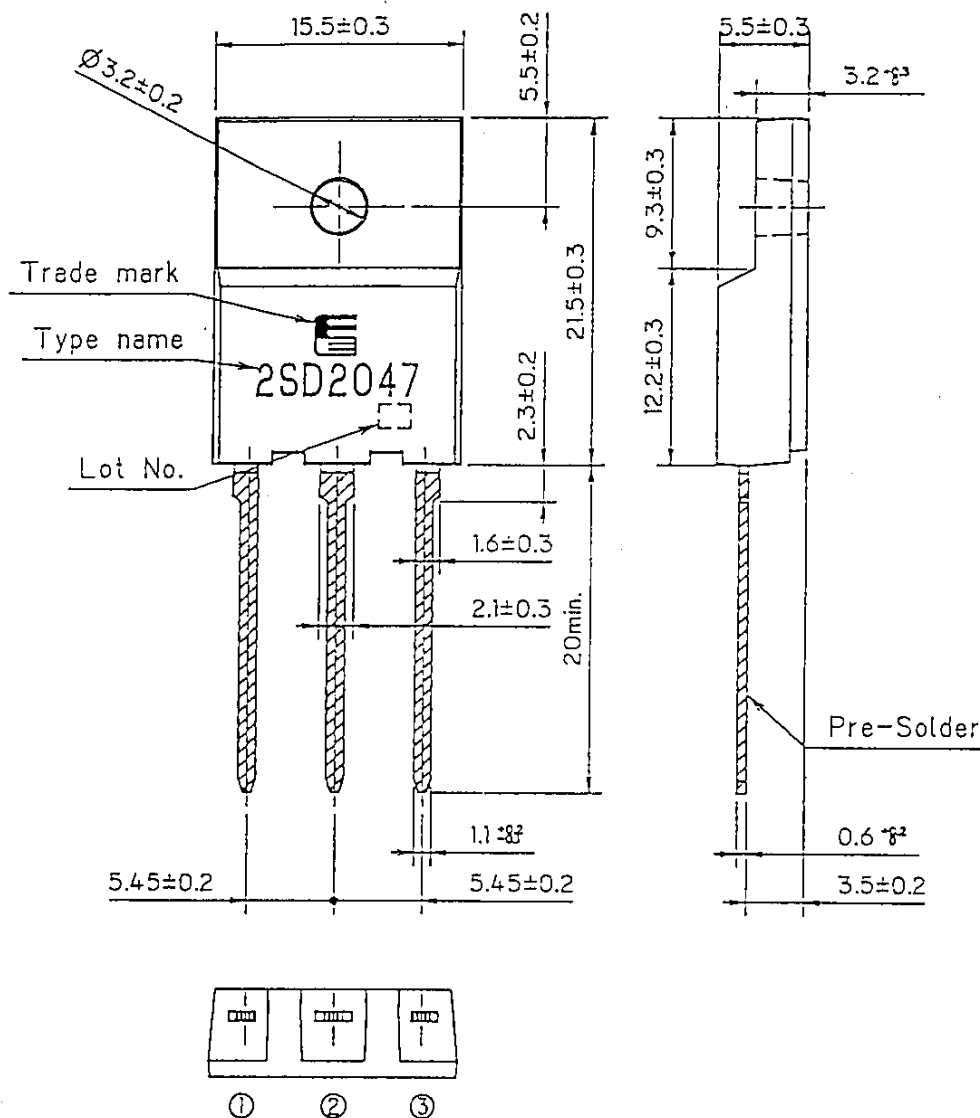
DWG. NO.

7/8

Y 0257-R-003a

FUJI POWER TRANSISTOR

TYPE : 2SD2047R



CONNECTION

- ① BASE
- ② COLLECTOR
- ③ EMITTER

DIMENSIONS ARE IN MILLIMETERS

Fuji Electric Co., Ltd.

DWG. NO.

8/8

Y 0257-R-003a