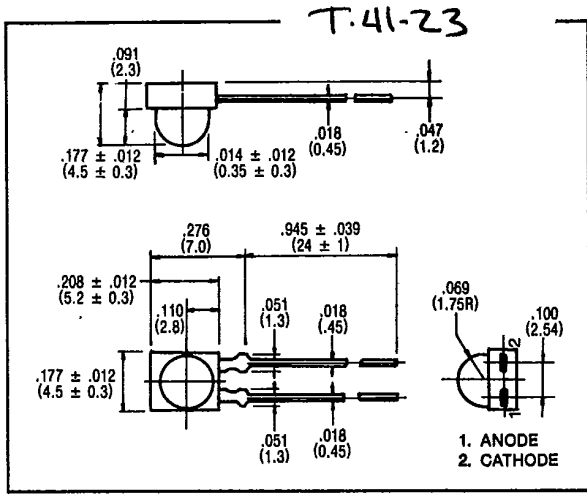


SIDE VIEW LED LAMPS

FEATURES

- Cost effective. Provides 90° angle without molding.
- Excellent brightness.
- Available in clear or diffused package, narrow or wide viewing angles.



MAXIMUM RATINGS (Ta = 25°C)

PART NO.	FORWARD CURRENT (I _F) (mA)	REVERSE VOLTAGE (V _R) (V)	POWER DISSIPATION (P _D) (mW)	OPERATING TEMPERATURE (T _{opt}) (°C)	STORAGE TEMPERATURE (T _{stg}) (°C)
MT2230-R	25	4	70	-20 ~ 75	-30 ~ 100
MT2240-R	25	4	70	-20 ~ 75	-30 ~ 100
MT2230-G	25	4	70	-20 ~ 75	-30 ~ 100
MT2240-G	25	4	70	-20 ~ 75	-30 ~ 100
MT2230-Y	25	4	70	-20 ~ 75	-30 ~ 100
MT2240-Y	25	4	70	-20 ~ 75	-30 ~ 100

OPTO-ELECTRICAL CHARACTERISTICS (Ta = 25°C)

PART NO.	MATERIAL	LENS COLOR	VIEWING ANGLE	LUMINOUS INTENSITY (mcd)				FORWARD VOLTAGE (v)			REVERSE CURRENT		PEAK WAVELENGTH (nm)	SPEC. LINE HALF WIDTH (nm)
				typ.	min.	typ.	@mA	typ.	max.	@ mA	μA	V _r		
MT2230-R	GaP/GaP	Red/Clear	50°	1.0	3.0	15	2.1	2.8	20	5	4	700	100	
MT2240-R	GaP/GaP	Red/Diff	180°	.4	1.0	15	2.1	2.8	20	5	4	700	100	
MT2230-G	GaP/GaP	Green/Clear	50°	1.5	10.0	15	2.1	2.8	20	5	4	565	25	
MT2240-G	GaP/GaP	Green/Diff	180°	.6	1.7	15	2.1	2.8	20	5	4	565	25	
MT2230-Y	GaAsP/GaP	Yellow/Clear	50°	1.5	10.0	15	2.1	2.8	20	100	4	585	32	
MT2240-Y	GaAsP/GaP	Yellow/Diff	180°	.8	1.7	15	2.1	2.8	20	100	4	585	32	