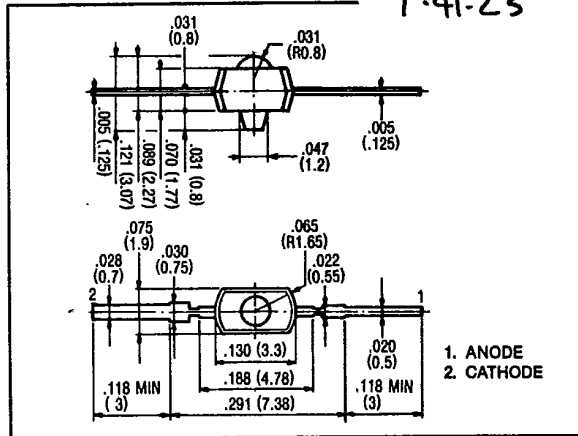


AXIAL LEADED LED LAMPS

FEATURES

- Provides excellent point source.
- Available in water clear or tinted clear epoxy.
- All plastic mold.



MAXIMUM RATINGS (Ta = 25°C)

PART NO.	FORWARD CURRENT (If) (mA)	REVERSE VOLTAGE (Vr) (V)	POWER DISSIPATION (Pd) (mW)	OPERATING TEMPERATURE (Topt) (°C)	STORAGE TEMPERATURE (Tstg) (°C)
MT210-R	15	4	60	-20 ~ 75	-30 ~ 80
MT220-R	15	4	60	-20 ~ 75	-30 ~ 80
MT210-G	20	4	60	-20 ~ 75	-30 ~ 80
MT220-G	20	4	60	-20 ~ 75	-30 ~ 80

OPTO-ELECTRICAL CHARACTERISTICS (Ta = 25°C)

PART NO.	MATERIAL	LENS COLOR	VIEWING ANGLE	LUMINOUS INTENSITY (mcd)			FORWARD VOLTAGE (v)			REVERSE CURRENT		PEAK WAVELENGTH (nm)	SPEC. LINE HALF WIDTH (nm)
				typ.	min.	typ. @mA	typ.	max.	@ mA	µA	Vr		
MT210-R	GaP/GaP	Water/Clear	55°	.4	1.5	10	2.05	2.6	15	5	4	700	100
MT220-R	GaP/GaP	Red/Clear	55°	.3	1.2	10	2.05	2.6	15	5	4	700	100
MT210-G	GaP/GaP	Water/Clear	55°	.5	3.0	20	2.1	2.6	20	5	4	665	25
MT220-G	GaP/GaP	Green/Clear	55°	.5	2.0	20	2.1	2.6	20	5	4	565	25

marktech 120 Broadway • Menands, New York 12204 • (518) 436-5865 • FAX: (518) 436-5877