

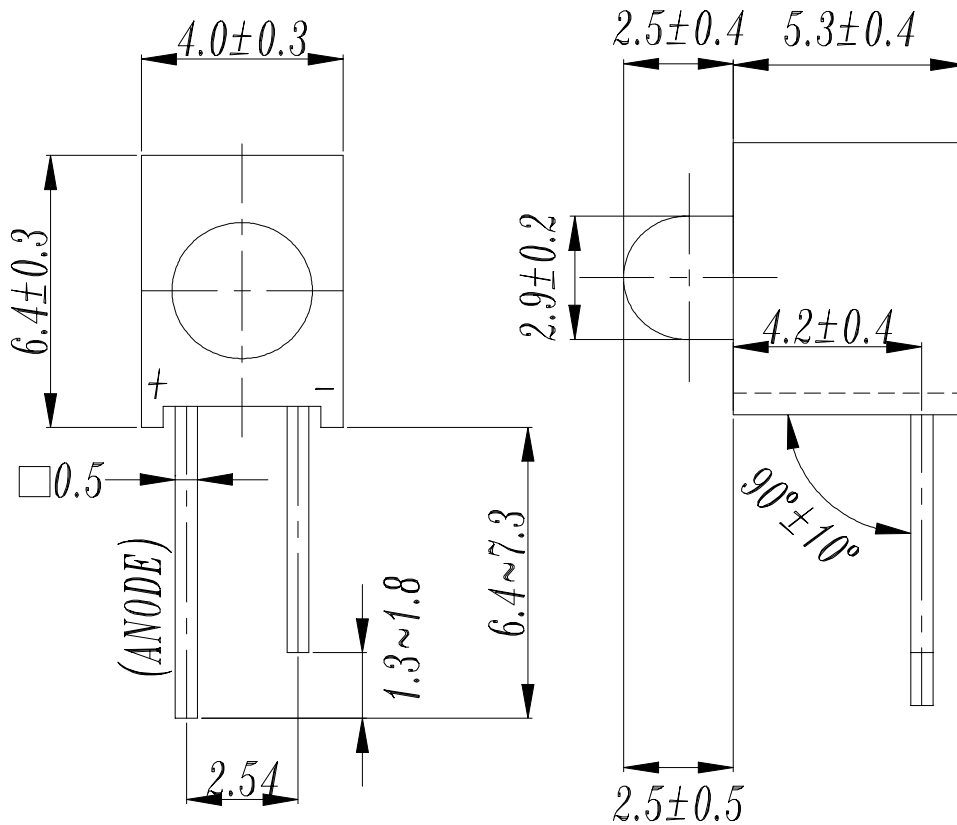


EVERLIGHT ELECTRONICS CO.,LTD.

Device Number : CDAE-021-036 REV.: 1

PART NO. : A214B/SO ECN : Page: 1/6

■ Package Dimensionas:



■ Notes:

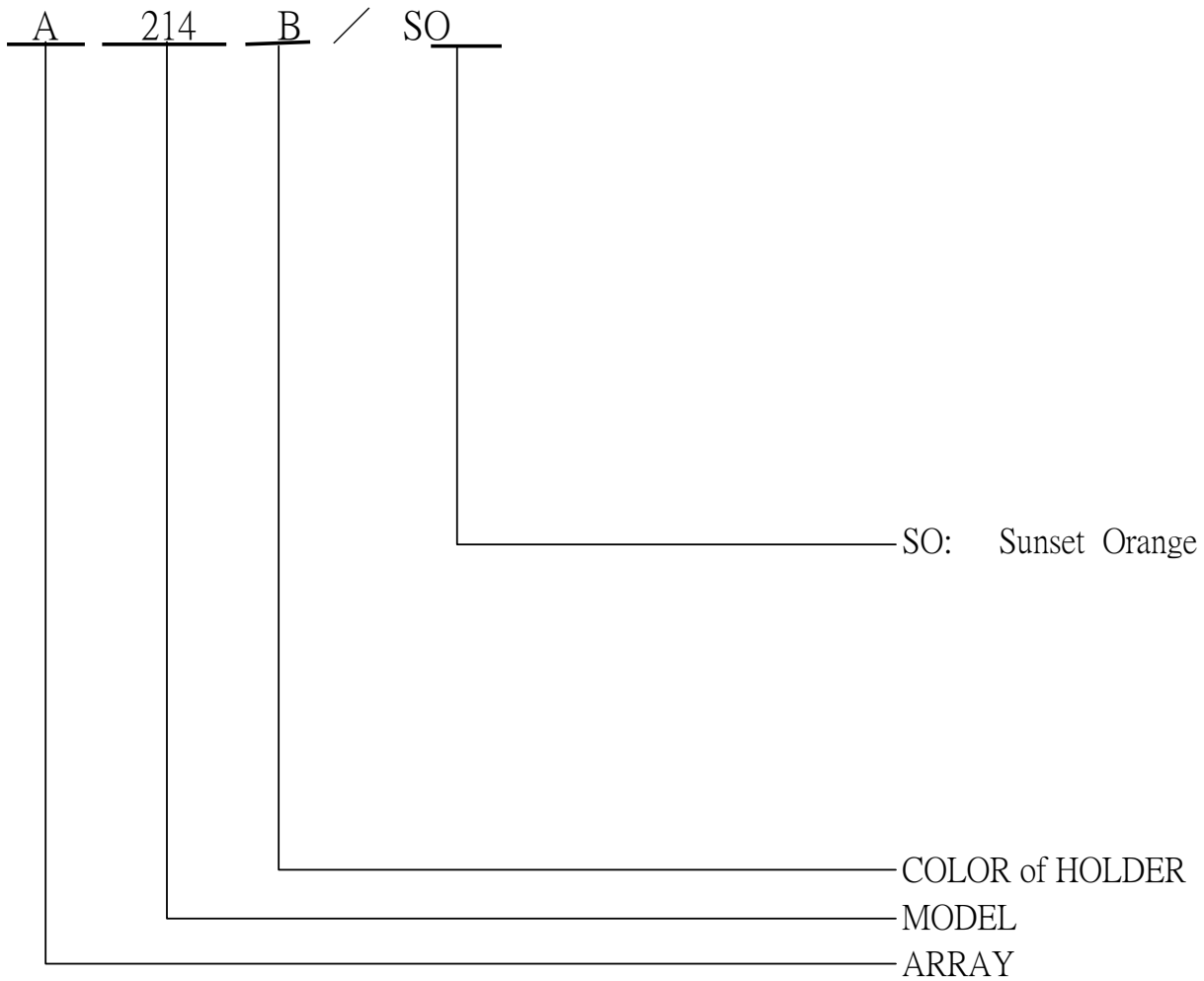
- 1.All dimensions are in millimeters, tolerance is 0.25mm except being specified
- 2.Lead spacing is measured where the lead emerge from the package

LED PART NO.	Chip		Lens Color
	Material	Emitted Color	
264-10SOD	GaAsP/GaP	Sunset Orange	Sunset Orange Diffused

Office : 7C Building, Lian Hua Port Industrial District, Lian Hua Shan
 Bonded Pricessing Zone Pan Yu, Guang Zhou, China
 TEL. : (020)84860913,84860914
 FAX : (020)84860600
 http : //www.everlight.com



■ LED LAMP ARRAYS SELECTION GUIDE:





EVERLIGHT ELECTRONICS CO.,LTD.

Device Number : CDAE-021-036 REV.: 1

PART NO. : A214B/SO ECN : _____ Page: 4/6

■ Absolute Maximum Ratings at Ta = 25°C

Parameter	Symbol	Rating	Unit
Forward Current	I _F	40	mA
Operating Temperature	T _{opr}	-40 to +85	°C
Storage Temperature	T _{stg}	-40 to +100	°C
Soldering Temperature	T _{sol}	260 ± 5	°C
Power Dissipation	P _d	110	mW
Peak Forward Current(Duty 1/10 @ 1KHz)	I _{F(Peak)}	160	mA
Reverse Voltage	V _R	5	V

■ Electronic Optical Characteristics :

Parameter	Symbol	Min.	Typ.	Max.	Unit	Condition
Luminous Intensity	I _v	2.50	6.30	/	mcd	I _F = 10 mA
Viewing Angle	2θ 1/2	/	60	/	deg	I _F = 20 mA
Peak Wavelength	λ _p	/	610	/	nm	I _F = 20 mA
Dominant Wavelength	λ _d	/	605	/	nm	I _F = 20 mA
Spectrum Radiation Bandwidth	Δλ	/	40	/	nm	I _F = 20 mA
Forward Voltage	V _F	1.7	2.0	2.4	V	I _F = 20 mA
Reverse Current	I _R	/	/	10	μA	V _R = 5 V

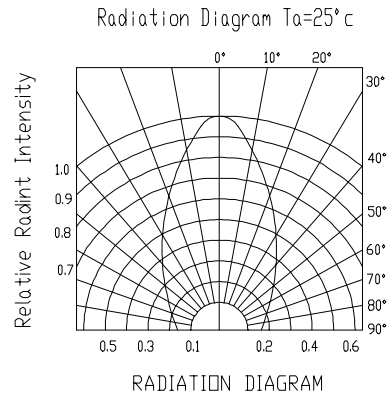
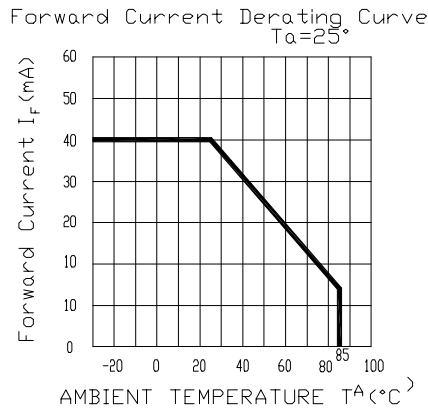
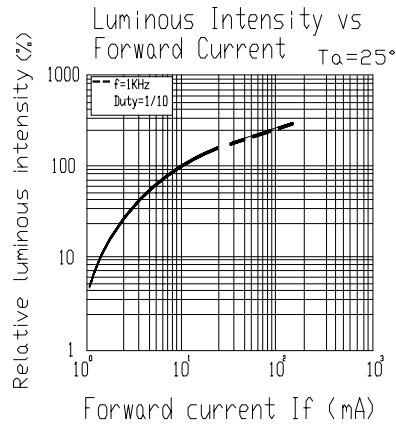
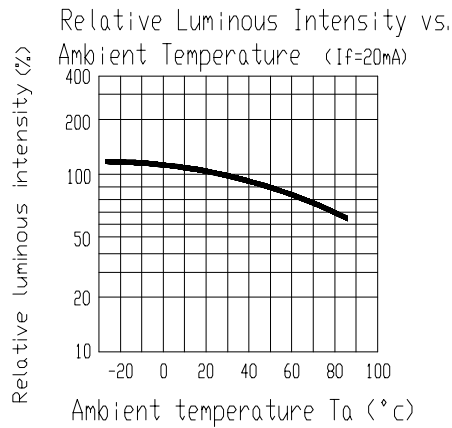
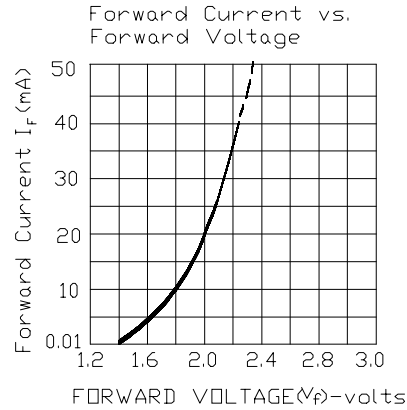
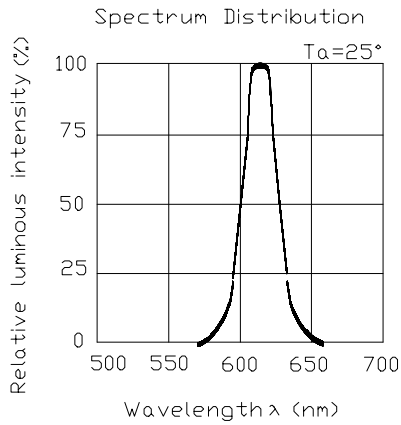


EVERLIGHT ELECTRONICS CO.,LTD.

Device Number : CDAE-021-036 REV.: 1

PART NO. : A214B/SO ECN : _____ Page: 5/6

■ Typical Electro-Optical Characteristic Curves:





EVERLIGHT ELECTRONICS CO.,LTD.

Device Number : CDAE-021-036 REV.: 1

PART NO. : A214B/SO ECN : Page: 6/6

■ Reliability test items and conditions

NO	Item	Test Conditions	Test Hours/Cycle	Sample Size	Ac/Re
1	Solder Heat	TEMP : 260°C ± 5 °C	5 SEC	76 PCS	0/1
2	Temperature Cycle	H : +85°C 30min ∫ 5 min L : -55°C 30min	50 CYCLES	76 PCS	0/1
3	Thermal Shock	H : +100°C 5min ∫ 10 sec L : -10°C 5min	50 CYCLES	76 PCS	0/1
4	High Temperature Storage	TEMP : 100°C	1000 HRS	76 PCS	0/1
5	Low Temperature Storage	TEMP : -55°C	1000 HRS	76 PCS	0/1
6	DC Operating Life	TEMP : 25°C IF = 20 mA	1000 HRS	76 PCS	0/1
7	High Temperature / High Humidity	85°C/85% RH	1000 HRS	76 PCS	0/1