

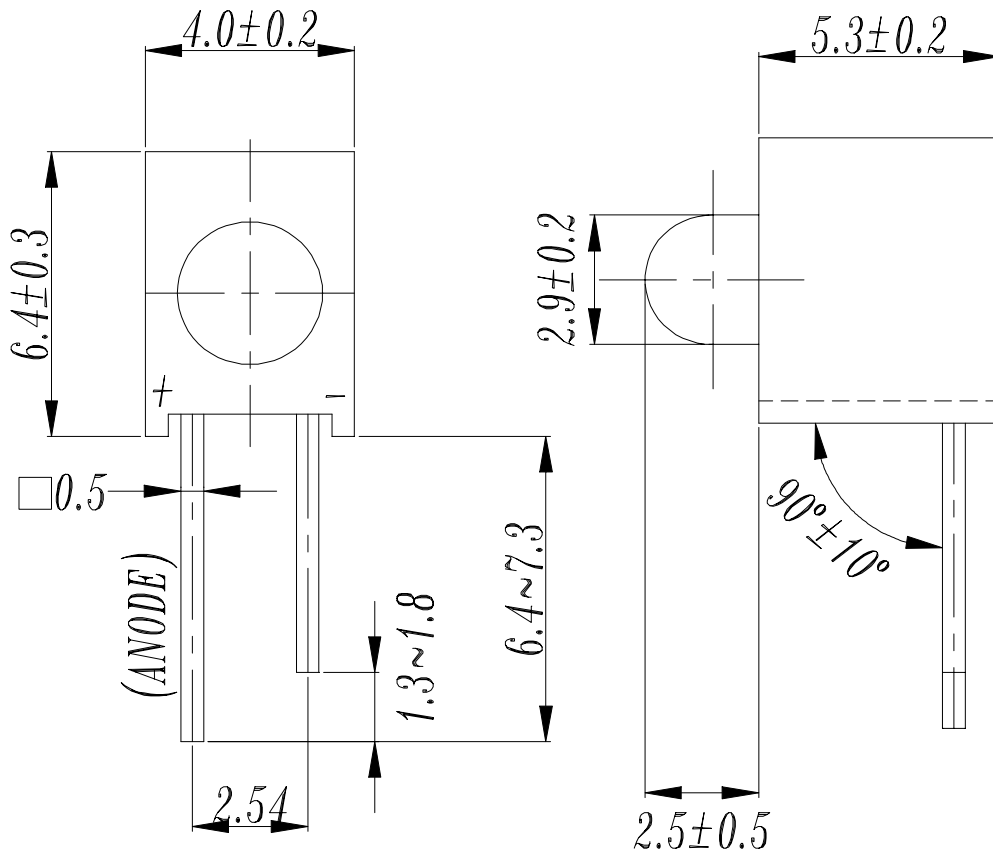


# EVERLIGHT ELECTRONICS CO.,LTD.

Device Number : DAE-021-430 REV: 1.0

PART NO : A214B/H ECN :          Page: 1/5

■ Package Dimensions:



■ Notes:

- 1.All dimensions are in millimeters, tolerance is 0.25mm except being specified
- 2.Lead spacing is measured where the lead emerges from the package

| LED PART NO | Chip     |               | Lens Color   |
|-------------|----------|---------------|--------------|
|             | Material | Emitted Color |              |
| 264-10HD    | GaP      | Bright Red    | Red Diffused |

OFFICE : NO. 25,Lane 76,Sec.3, Chung Yang Rd., Tucheng 236, Taipei, Taiwan, R.O.C.

TEL : 886-2-2267-2000,2267-9936

FAX : 886-2-2267-6244,22676189,22676306

<http://www.everlight.com>



Device Number : DAE-021-430 REV: 1.0

PART NO : A214B/H ECN :  Page: 2/5

■ Descriptions:

- 1.ARRAY=Plastic Holder+Combination of Lamps
- 2.The array will easily mount the applicable lamps on any panel

■ Features:

- 1.Low power consumption
- 2.High efficiency and low cost
- 3.Good control and free combinations on the colors of LED lamps
- 5.Good lock and easy to assembly
- 6.Stackable and easy to assembly
- 7.Stackable vertically and easy to assembly
- 8.Versatile mounting on PCB or panel
- 9.Stackable horizontally and easy to assembly

■ Applications:

- 1.Used as indicators of indicating the degrees, functions, positions etc, in electronic instruments.



■ LED LAMP ARRAYS SELECTION GUIDE:

A    214    B /    H

- SR:Super Red
- H:Brighgt Red
- I:Hi-Eff Red
- A:Amber
- Y:Yellow
- E:Orange
- G:Green

- COLOR OF HOLDER(BLACK)
- MODEL
- ARRAY



# EVERLIGHT ELECTRONICS CO.,LTD.

Device Number : DAE-021-430 REV: 1.0

PART NO : A214B/H ECN :            Page: 4/5

## Absolute Maximum Ratings at Ta = 25°C

| Parameter                              | Symbol   | Rating      | Unit |
|--|----------|-------------|------|
| Forward Current                        | If       | 15          | mA   |
| Operating Temperature                  | Topr     | -40 to +85  | °C   |
| Storage Temperature                    | Tstg     | -40 to +100 | °C   |
| Soldering Temperature                  | Tsol     | 260 ± 5     | °C   |
| Power Dissipation                      | Pd       | 45          | mW   |
| Peak Forward Current(Duty 1/10 @ 1KHz) | If(Peak) | 50          | mA   |
| Reverse Voltage                        | Vr       | 5           | V    |

## Electronic Optical Characteristics :

| Parameter                    | Symbol | Min. | Typ. | Max. | Unit | Condition |
|------------------------------|--------|------|------|------|------|-----------|
| Luminous Intensity           | Iv     | 0.5  | 1.6  | /    | mcd  | If= 10 mA |
| Viewing Angle                | 2θ 1/2 | /    | 60   | /    | deg  | If= 10 mA |
| Peak Wavelength              | λ p    | /    | 697  | /    | nm   | If= 10 mA |
| Dominant Wavelength          | λ d    | /    | 650  | /    | nm   | If= 10 mA |
| Spectrum Radiation Bandwidth | Δ λ    | /    | 90   | /    | nm   | If= 10 mA |
| Forward Voltage              | Vf     | 1.5  | 2.0  | 2.4  | V    | If= 10 mA |
| Reverse Current              | Ir     | /    | /    | 10   | μ A  | Vr= 5 V   |



# EVERLIGHT ELECTRONICS CO.,LTD.

Device Number : DAE-021-430 REV: 1.0

PART NO : A214B/H ECN :          Page: 5/5

## ■ Typical Electro-Optical Characteristic Curves:

