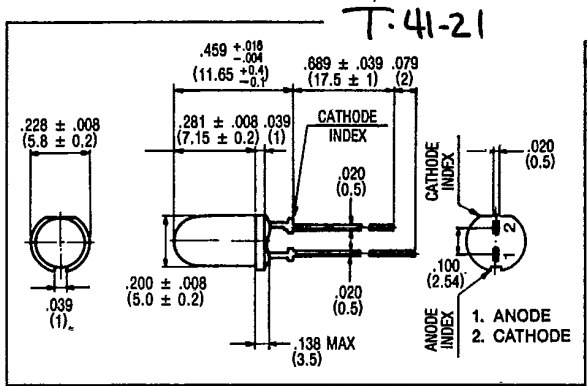
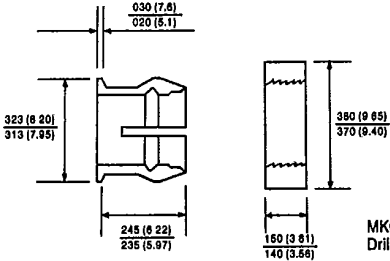


T-1³/₄ LED LAMPS WITH STANDOFFS

FEATURES

- Excellent on/off contrast ratio.
- Standoffs provide protection to LED die when used in solder bath.
- Capable of pulse operation.
- Special brightness and wavelength sorting is available.

OPTIONAL MOUNTING RING(R) AND CLIP(C)



MKC-200 R/C can be used with panels up to .125 inch (3.18 mm) thick.
Drill .257 inch dia. (6.53 mm) hole ("F" drill).

MAXIMUM RATINGS (Ta = 25°C)

| PART NO. | FORWARD CURRENT (IF) (mA) | REVERSE VOLTAGE (VR) (V) | POWER DISSIPATION (PD) (mW) | OPERATING TEMPERATURE (TOPT) (°C) | STORAGE TEMPERATURE (TSTG) (°C) |
|----------|---------------------------|--------------------------|-----------------------------|-----------------------------------|---------------------------------|
| MT130-HR | 25 | 4 | 100 | -20 ~ 75 | -30 ~ 100 |
| MT140-HR | 25 | 4 | 100 | -20 ~ 75 | -30 ~ 100 |
| MT130-G | 25 | 4 | 100 | -20 ~ 75 | -30 ~ 100 |
| MT140-G | 25 | 4 | 100 | -20 ~ 75 | -30 ~ 100 |
| MT130-Y | 25 | 4 | 100 | -20 ~ 75 | -30 ~ 100 |
| MT140-Y | 25 | 4 | 100 | -20 ~ 75 | -30 ~ 100 |
| MT130-O | 25 | 4 | 100 | -20 ~ 75 | -30 ~ 100 |
| MT140-O | 25 | 4 | 100 | -20 ~ 75 | -30 ~ 100 |
| MT130-UR | 25 | 4 | 55 | -20 ~ 75 | -30 ~ 100 |
| MT140-UR | 25 | 4 | 55 | -20 ~ 75 | -30 ~ 100 |
| MT200-UR | 25 | 4 | 55 | -20 ~ 75 | -30 ~ 100 |

OPTO-ELECTRICAL CHARACTERISTICS (Ta = 25°C)

| PART NO. | MATERIAL | LENS COLOR | VIEWING ANGLE | LUMINOUS INTENSITY (mcd) | | | | FORWARD VOLTAGE (V) | | | REVERSE CURRENT | | PEAK WAVELENGTH (nm) | SPEC. LINE HALF WIDTH (nm) |
|----------|-----------|--------------|---------------|--------------------------|------|------|------|---------------------|------|------|-----------------|-----|----------------------|----------------------------|
| | | | | typ. | min. | typ. | @mA | typ. | max. | @ mA | µA | Vr | | |
| MT130-HR | GaAsP/GaP | Red/Clear | 50° | 5.0 | 15 | 15 | 2.1 | 2.8 | 20 | 100 | 4 | 635 | 40 | |
| MT140-HR | GaAsP/GaP | Red/Diff | 80° | 3.0 | 7 | 15 | 2.1 | 2.8 | 20 | 100 | 4 | 635 | 40 | |
| MT130-G | GaP/GaP | Green/Clear | 50° | 3.0 | 17 | 15 | 2.1 | 2.8 | 20 | 5 | 4 | 565 | 25 | |
| MT140-G | GaP/GaP | Green/Diff | 80° | .8 | 5 | 15 | 2.1 | 2.8 | 20 | 5 | 4 | 565 | 25 | |
| MT130-Y | GaAsP/GaP | Yellow/Clear | 50° | 1.0 | 9 | 15 | 2.1 | 2.8 | 20 | 100 | 4 | 585 | 32 | |
| MT140-Y | GaAsP/GaP | Yellow/Diff | 80° | .8 | 5 | 15 | 2.1 | 2.8 | 20 | 100 | 4 | 585 | 32 | |
| MT130-O | GaAsP/GaP | Orange/Clear | 50° | 1.0 | 8 | 15 | 2.1 | 2.8 | 20 | 100 | 4 | 610 | 35 | |
| MT140-O | GaAsP/GaP | Orange/Diff | 80° | .8 | 4 | 15 | 2.1 | 2.8 | 20 | 100 | 4 | 610 | 35 | |
| MT130-UR | GaAlAs | Red/Clear | 50° | 5.0 | 20 | 20 | 1.75 | 2.2 | 20 | 100 | 4 | 660 | 25 | |
| MT140-UR | GaAlAs | Red/Diff | 80° | 4.0 | 15 | 20 | 1.75 | 2.2 | 20 | 100 | 4 | 660 | 25 | |
| MT200-UR | GaAlAs | Red/Clear | 50° | 6.0 | 22 | 20 | 1.75 | 2.2 | 20 | 100 | 4 | 660 | 25 | |