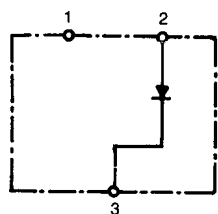


SOT-23 Surface Mount LED Lamps

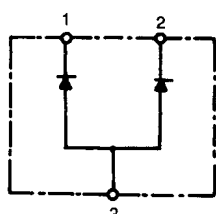
FEATURES

- SOT-23 package
- Water clear
- Capable of pulse operation
- Packaged on tape with 3,000 parts per reel

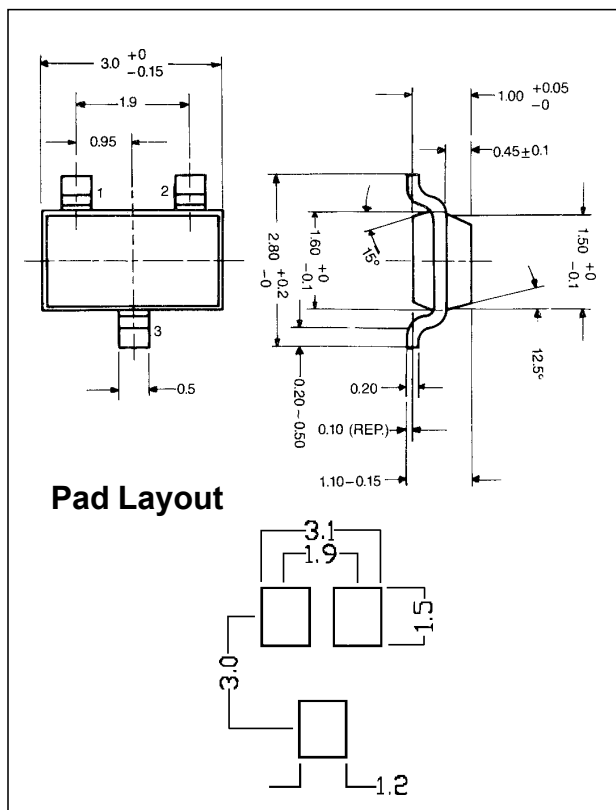
CIRCUITRY



SINGLE COLOR



BI-COLOR



Pad Layout

OPTO-ELECTRICAL CHARACTERISTICS (Ta = 25°C)

PART NO.	EMITTING COLOR	RESIN COLOR	LUMINOUS INTENSITY (mcd)			FORWARD VOLTAGE (V)			REVERSE CURRENT		PEAK WAVE LENGTH (nm)
			min.	typ.	@mA	typ.	max.	@mA	μA	Vr	
MTSM3015-HR	Hi-Eff Red	Water Clear	--	3.5	20	2.1	2.8	20	100	5	635
MTSM4015-Y	Yellow	Water Clear	--	3.0	20	2.1	2.8	20	100	5	585
MTSM5015-G	Green	Water Clear	--	3.0	20	2.1	2.8	20	100	5	565
MTSM3415-HRY	Hi-Eff Red/Yellow	Water Clear	--	3.0	20	2.1	2.8	20	100	5	635/585
MTSM3515-HRG	Hi-Eff Red/Green	Water Clear	--	3.0	20	2.1	2.8	20	100	5	635/565
MTSM4515-YG	Yellow/Green	Water Clear	--	3.0	20	2.1	2.8	20	100	5	585/565

NOTE - Operating Temperature: -30°C~+85°C
Contact factory for soldering instructions.



120 Broadway • Menands, New York 12204

Toll Free: (800) 98-4LEDS • Fax: (518) 432-7454

For up-to-date product info visit our web site at www.marktechopto.com

All specifications subject to change.