

Surface Mount RF Transformer

www.DataSheet4U.com

1 to 400 MHz

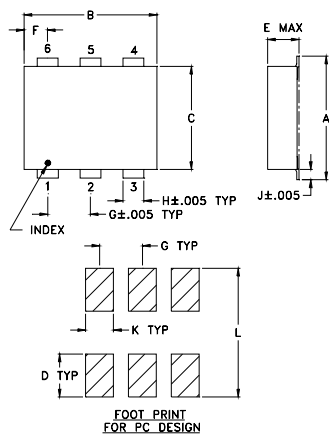
Maximum Ratings

Operating Temperature	-40°C to 85°C
Storage Temperature	-55°C to 100°C
RF Power	250 mA

Pin Configuration

primary dot	3
primary	1
secondary dot	4
secondary	6
secondary ct	5
not used	2

Outline Drawing

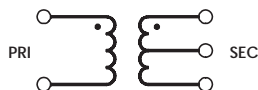


Outline Dimensions (inch/mm)

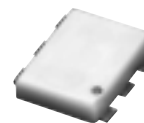
A	B	C	D	E	F	G	H
.280	.310	.220	.100	.112	.055	.100	.030
7.11	7.87	5.58	2.54	2.84	1.40	2.54	0.76

J	K	L	wt.
.030	.065	.300	grams
0.76	1.65	7.62	.20

config. A



ADT1-1WT-1



CASE STYLE: CD542

Electrical Specifications

Ω RATIO	FREQUENCY (MHz)	INSERTION LOSS*			PHASE UNBALANCE (Deg.) Typ.		RETURN LOSS (dB)	
		3 dB MHz	2 dB MHz	1 dB MHz	1 dB bandwidth	2 dB bandwidth	1 dB bandwidth	2 dB bandwidth
1	1-400	—	—	1-400	3	—	16	—

* Insertion Loss is referenced to mid-band loss, 0.5 dB typ. 75 ohm system.