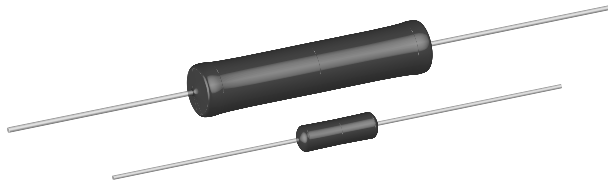


# Wirewound Resistors, Military, MIL-PRF-26 Qualified, Type RW, Precision Power, Silicone Coated



### FEATURES

- High temperature coating (> 350 °C)
- Complete welded construction
- Meets applicable requirements of MIL-PRF-26
- Available in non-inductive styles (type NS) with Aryton-Perry winding for lowest reactive components
- Excellent stability in operation (typical resistance shift < 0.5 %)
- Lead (Pb)-Free version is RoHS Compliant



RoHS\*  
COMPLIANT

## STANDARD ELECTRICAL SPECIFICATIONS

GLOBAL MODEL	HISTORICAL MODEL	MIL-PRF-26 TYPE	POWER RATING**** P <sub>25 °C</sub> W		RESISTANCE RANGE MIL. RANGE SHOWN IN BOLD FACE Ω					WEIGHT (Typical) g
			± 0.05 % thru ± 5 %	± 3 % thru ± 10 %	± 0.05 %	± 0.1 %	± 0.25 %	± 0.5 % & ± 1 %	± 3 %, ± 5 %, ± 10 %	
RS1/8	RS-18	—	0.125	—	—	—	—	0.1 - 950	0.1 - 950	0.15
RS1/4	RS-1/4	—	0.4	—	1 - 1 k	0.499 - 1k	0.499 - 3.4 k	0.1 - 3.4 k	0.1 - 3.4 k	0.21
RS1/2	RS-1/2	—	0.75	—	1 - 1.3 k	0.499 - 1.3k	0.499 - 4.9 k	0.1 - 4.9 k	0.1 - 4.9 k	0.23
RS01A	RS-1A	—	1.0	—	1 - 2.74 k	0.499 - 2.74 k	0.499 - 10.4 k	0.1 - 10.4 k	0.1 - 10.4 k	0.34
RS01A...300	RS-1A-300	<b>RW70***</b>	1.0 <b>1.0</b>	—	—	0.499 - 2.74 k	0.499 - 10.4 k	0.1 - 10.4 k <b>0.1 - 2.74 k</b>	0.1 - 10.4 k	0.34
RS01M	RS-1M	—	1.0	—	1 - 1.32 k	0.499 - 1.67 k	0.499 - 6.85 k	0.1 - 6.85 k	0.1 - 6.85 k	0.30
RS002	RS-2	—	4.0	5.5	0.499 - 12.7 k	0.499 - 12.7 k	0.1 - 47.1 k	0.1 - 47.1 k	0.1 - 47.1 k	2.10
RS02M	RS-2M	—	3.0	—	0.499 - 4.49 k	0.499 - 4.49 k	0.1 - 18.74 k	0.1 - 18.74 k	0.1 - 18.74 k	0.65
RS02B	RS-2B	—	3.0	3.75	0.499 - 6.5 k	0.499 - 6.5 k	0.1 - 24.5 k	0.1 - 24.5 k	0.1 - 24.5 k	0.70
RS02B...300	RS-2B-300	<b>RW79***</b>	3.0 <b>3.0</b>	—	—	0.499 - 6.5 k	0.1 - 24.5 k	0.1 - 24.5 k <b>0.1 - 6.49 k</b>	0.1 - 24.5 k	0.70
RS02C	RS-2C	—	2.5	3.25	0.499 - 8.6 k	0.499 - 8.6 k	0.1 - 32.3 k	0.1 - 32.3 k	0.1 - 32.3 k	1.6
RS02C...17	RS-2C-17	—	2.5	3.25	0.499 - 6.8 k	0.499 - 8.6 k	0.1 - 32.3 k	0.1 - 32.3 k	0.1 - 32.3 k	1.6
RS02C...23	RS-2C-23	<b>RW69**</b>	—	3.25 <b>3.0</b>	—	—	—	—	0.1 - 32.3 k <b>0.1 - 2.0 k</b>	16
RS005	RS-5	—	5.0	6.5	0.499 - 25.7 k	0.499 - 25.7 k	0.1 - 95.2 k	0.1 - 95.2 k	0.1 - 95.2 k	4.2
RS005...69	RS-5-69	<b>RW74***</b>	5.0 <b>5.0</b>	—	—	0.499 - 25.7 k	0.1 - 95.2 k	0.1 - 95.2 k <b>0.1 - 24.3 k</b>	0.1 - 95.2 k	4.2
RS005...70	RS-5-70	<b>RW67**</b>	—	6.5 <b>6.5</b>	—	—	—	—	0.1 - 95.2 k <b>0.1 - 8.2 k</b>	4.2
RS007	RS-7	—	7.0	9.0	0.499 - 41.4 k	0.499 - 41.4 k	0.1 - 154 k	0.1 - 154 k	0.1 - 154 k	4.7
RS010	RS-10	—	10.0	13.0	0.499 - 73.4 k	0.499 - 73.4 k	0.1 - 273 k	0.1 - 273 k	0.1 - 273 k	9.0
RS010...38	RS-10-38	<b>RW78***</b>	10.0 <b>10.0</b>	—	—	0.499 - 73.4 k	0.1 - 273 k	0.1 - 273 k <b>0.1 - 71.5 k</b>	0.1 - 273 k	9.0
RS010...39	RS-10-39	<b>RW68**</b>	—	13.0 <b>11.0</b>	—	—	—	—	0.1 - 273 k <b>0.1 - 20 k</b>	9.0

\*\* Available tolerance for these Mil parts is ± 5 % for 1 Ω and above, ± 10 % below 1 Ω.

\*\*\* Available tolerance for these Mil parts is ± 0.5 % & ± 1 % for resistance values 0.1 Ω and above, ± 0.1 % for resistance values 0.499 Ω and above.

\*\*\*\* Vishay Dale RS models have two power ratings depending on operation temperature and stability requirements.

NOTE: Shaded area indicates most popular models.

## GLOBAL PART NUMBER INFORMATION

New Global Part Numbering: RS02C10K00FS7017 (preferred part numbering format)

R S 0 2 C 1 0 K 0 0 F S 7 0 1 7

GLOBAL MODEL	RESISTANCE VALUE	TOLERANCE CODE	PACKAGING	SPECIAL
(See Standard Electrical Specifications Global Model column for options)	R = Decimal K = Thousand <b>15R00 = 15 Ω</b> <b>10K00 = 10 kΩ</b>	A = ± 0.05 % B = ± 0.1 % C = ± 0.25 % D = ± 0.5 % F = ± 1.0 % J = ± 5.0 % K = 10.0 %	E70 = Lead (Pb)-free, Tape/Reel (smaller than RS005) E73 = Lead (Pb)-free, Tape/Reel (RS005 & larger) E12 = Lead (Pb)-free, Bulk <b>Lead (Pb)-free is not available on RW military type</b> S70 = Tin/Lead, Tape/Reel (smaller than RS005) S73 = Tin/Lead, Tape/Reel (RS005 & larger) B12 = Tin/Lead, Bulk	(Dash Number) (up to 3 digits) From 1-999 as applicable

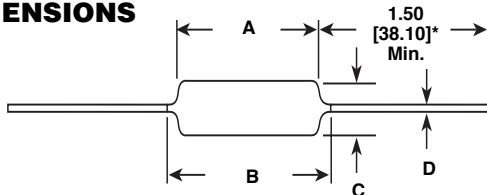
Historical Part Number example: RS-2C-17 10 kΩ 1 % S70 (will continue to be accepted)

RS-2C-17	10 kΩ	1 %	S70
HISTORICAL MODEL	RESISTANCE VALUE	TOLERANCE CODE	PACKAGING

\* Pb containing terminations are not RoHS compliant, exemptions may apply

**Wirewound Resistors, Military, MIL-PRF-26 Qualified,  
Type RW, Precision Power, Silicone Coated**

Vishay Dale

**DIMENSIONS**


\*On some standard reel pack methods, the leads may be trimmed to a shorter length than shown.

**NOTE:** RS-1/8 terminal length will be 1.0" [25.4 mm] minimum.

**MATERIAL SPECIFICATIONS**

**Element:** Copper-nickel alloy or nickel-chrome alloy, depending on resistance value

**Core:** Ceramic, steatite or alumina, depending on physical size

**Coating:** Special high temperature silicone

**Standard Terminals:** 100% Sn, or 60/40 Sn/Pb coated Copperweld®.

**NOTE:** Military "RW" parts are only available with 60/40 Sn/Pb finish.

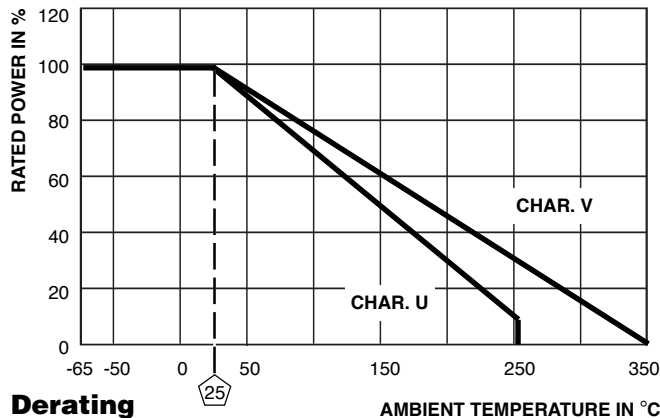
**End Caps:** Stainless steel

**Deviations for RS-1/8:** Thermoset silicone molded construction,

endcaps will be nickel-silver alloy and terminals will be tinned copper

**Part Marking:** DALE, Model, Wattage\*, Value, Tolerance, Date Code

\*Wattage marked on part will be "U" characteristic


**Derating**
**NS NON-INDUCTIVE**

Models of equivalent physical and electrical specifications are available with non-inductive (Aryton-Perry) winding. They are identified by substituting the letter N for R in the model number (NS-5, for example).

GLOBAL MODEL	DIMENSIONS in inches [millimeters]			
	A	B (Max.)**	C	D
RS1/8	0.155 ± 0.015 [3.94 ± 0.381]	—	0.065 ± 0.015 [1.65 ± 0.381]	0.020 ± 0.002 [0.508 ± 0.051]
RS1/4	0.250 ± 0.031 [6.35 ± 0.787]	0.281 [7.14]	0.085 ± 0.020 [2.16 ± 0.508]	0.020 ± 0.002 [0.508 ± 0.051]
RS1/2	0.312 ± 0.016 [7.92 ± 0.406]	0.328 [8.33]	0.078 + 0.016 - 0.031 [1.98 + 0.406 - 0.787]	0.020 ± 0.002 [0.508 ± 0.051]
RS01A RS01A...300	0.406 ± 0.031 [10.31 ± 0.787]	0.437 [11.10]	0.094 ± 0.031 [2.39 ± 0.787]	0.020 ± 0.002 [0.508 ± 0.051]
RS01M	0.285 ± 0.025 [7.24 ± 0.635]	0.311 [7.90]	0.110 ± 0.015 [2.79 ± 0.381]	0.020 ± 0.002 [0.508 ± 0.051]
RS002	0.625 ± 0.062 [15.88 ± 1.57]	0.765 [19.43]	0.250 ± 0.031 [6.35 ± 0.787]	0.040 ± 0.002 [1.02 ± 0.051]
RS02M	0.500 ± 0.062 [12.70 ± 1.57]	0.562 [14.27]	0.185 ± 0.015 [4.70 ± 0.381]	0.032 ± 0.002 [0.813 ± 0.051]
RS02B RS02B...300	0.560 ± 0.062 [14.22 ± 1.57]	0.622 [15.80]	0.187 ± 0.031 [4.75 ± 0.787]	0.032 ± 0.002 [0.813 ± 0.051]
RS02C	0.500 ± 0.062 [12.70 ± 1.57]	0.593 [15.06]	0.218 ± 0.031 [5.54 ± 0.787]	0.040 ± 0.002 [1.02 ± 0.051]
RS02C...17 RS02C...23	0.500 ± 0.062 [12.70 ± 1.57]	0.593 [15.06]	0.218 ± 0.031 [5.54 ± 0.787]	0.032 ± 0.002 [0.813 ± 0.051]
RS005 RS005...69 RS005...70	0.875 ± 0.062 [22.23 ± 1.57]	1.0 [25.4]	0.312 ± 0.031 [7.92 ± 0.787]	0.040 ± 0.002 [1.02 ± 0.051]
RS007	1.22 ± 0.062 [30.99 ± 1.57]	1.28 [32.51]	0.312 ± 0.031 [7.92 ± 0.787]	0.040 ± 0.002 [1.02 ± 0.051]
RS010 RS010...39	1.78 ± 0.062 [45.21 ± 1.57]	1.87 [47.50]	0.375 ± 0.031 [9.53 ± 0.787]	0.040 ± 0.002 [1.02 ± 0.051]
RS010...38	1.78 ± 0.062 [45.21 ± 1.57]	1.84 [46.74]	0.375 ± 0.031 [9.53 ± 0.787]	0.040 ± 0.002 [1.02 ± 0.051]

\*\*B (Max.) dimension is clean lead to clean lead.

Two conditions apply:

1. For NS models, divide maximum resistance values by two
2. Body O.D. on NS-2C may exceed that of the RS-2C by 010"

TECHNICAL SPECIFICATIONS		
PARAMETER	UNIT	RS RESISTOR CHARACTERISTICS
Temperature Coefficient	ppm/°C	± 90 for below 1 Ω, ± 50 for 1 Ω to 9.9 Ω, ± 20 for 10 Ω and above
Dielectric Withstanding Voltage	V <sub>AC</sub>	500 minimum for RS-1/8 thru RS-1A, 1000 minimum for all others
Maximum Working Voltage	V	(P x R) <sup>1/2</sup>
Insulation Resistance	Ω	1000 Megohm minimum dry, 100 Megohm minimum after moisture test
Terminal Strength	lb	5 minimum for RS-1/8 thru RS-1A, 10 minimum for all others
Solderability	—	MIL-PRF-26 type - Meets requirements of ANSI J-STD-002
Operating Temperature Range	°C	Characteristic U = - 65/+ 250, Characteristic V = - 65/+ 350

PERFORMANCE*			
TEST	CONDITIONS OF TEST	TEST LIMITS	
		Characteristic U	Characteristic V
Thermal Shock	Rated power applied until thermally stable, then a min. of 15 minutes at - 55 °C	± (0.2 % + 0.05 Ω) ΔF	± (2.0 % + 0.05 Ω) ΔF
Short Time Overload	5 x rated power (3.75 watt and smaller), 10 x rated power (4 watt and larger) for 5 seconds	± (0.2 % + 0.05 Ω) ΔF	± (2.0 % + 0.05 Ω) ΔF
Dielectric Withstanding Voltage	500 minimum for RS-1/8 thru RS-1A, 1000 for all others, duration of 1 minute	± (0.1 % + 0.05 Ω) ΔF	± (0.1 % + 0.05 Ω) ΔF
Low Temperature Storage	- 65 °C for 24 hours	± (0.2 % + 0.05 Ω) ΔF	± (2.0 % + 0.05 Ω) ΔF
High Temperature Exposure	250 hours at: U = + 250 °C, V = + 350 °C	± (0.5 % + 0.05 Ω) ΔF	± (2.0 % + 0.05 Ω) ΔF
Moisture Resistance	MIL-STD-202 Method 106, 7b not applicable	± (0.2 % + 0.05 Ω) ΔF	± (2.0 % + 0.05 Ω) ΔF
Shock, Specified Pulse	MIL-STD-202 Method 213, 100 g's for 6 milliseconds, 10 shocks	± (0.1 % + 0.05 Ω) ΔF	± (0.2 % + 0.05 Ω) ΔF
Vibration, High Frequency	Frequency varied 10 to 2000 Hz, 20 g peak, 2 directions 6 hours each	± (0.1 % + 0.05 Ω) ΔF	± (2.0 % + 0.05 Ω) ΔF
Load Life	2000 hours at rated power, + 25 °C, 1.5 hours "ON", 0.5 hours "OFF"	± (0.5 % + 0.05 Ω) ΔF	± (3.0 % + 0.05 Ω) ΔF
Terminal Strength	5 to 10 sec., 5 or 10 lb pull test (depending on size), torsion test - 3 alternating directions, 360° each	± (0.1 % + 0.05 Ω) ΔF	± (1.0 % + 0.05 Ω) ΔF

\*All ΔR figures shown are maximum, based upon testing requirements per MIL-PRF-26.



## Disclaimer

All product specifications and data are subject to change without notice.

Vishay Intertechnology, Inc., its affiliates, agents, and employees, and all persons acting on its or their behalf (collectively, "Vishay"), disclaim any and all liability for any errors, inaccuracies or incompleteness contained herein or in any other disclosure relating to any product.

Vishay disclaims any and all liability arising out of the use or application of any product described herein or of any information provided herein to the maximum extent permitted by law. The product specifications do not expand or otherwise modify Vishay's terms and conditions of purchase, including but not limited to the warranty expressed therein, which apply to these products.

No license, express or implied, by estoppel or otherwise, to any intellectual property rights is granted by this document or by any conduct of Vishay.

The products shown herein are not designed for use in medical, life-saving, or life-sustaining applications unless otherwise expressly indicated. Customers using or selling Vishay products not expressly indicated for use in such applications do so entirely at their own risk and agree to fully indemnify Vishay for any damages arising or resulting from such use or sale. Please contact authorized Vishay personnel to obtain written terms and conditions regarding products designed for such applications.

Product names and markings noted herein may be trademarks of their respective owners.