
Infrared Remote Control Transmitter

PT2210

Description

PT2210 is a remote control transmitter utilizing CMOS Technology specially designed for use on general purpose (RC-5) infrared applications with low voltage supply and large debounce time. It is compatible with SAA3010. PT2210 supports 32 systems. Each system has a maximum of 64 commands; thus, PT2210 can provide up to a total of 2,048 commands.

Features

- CMOS Technology
- Low Voltage Supply
- Supports up to 32 Systems
- Single Pin Oscillator
- Bi-phase Transmission Technique
- Provides 2,048 Commands

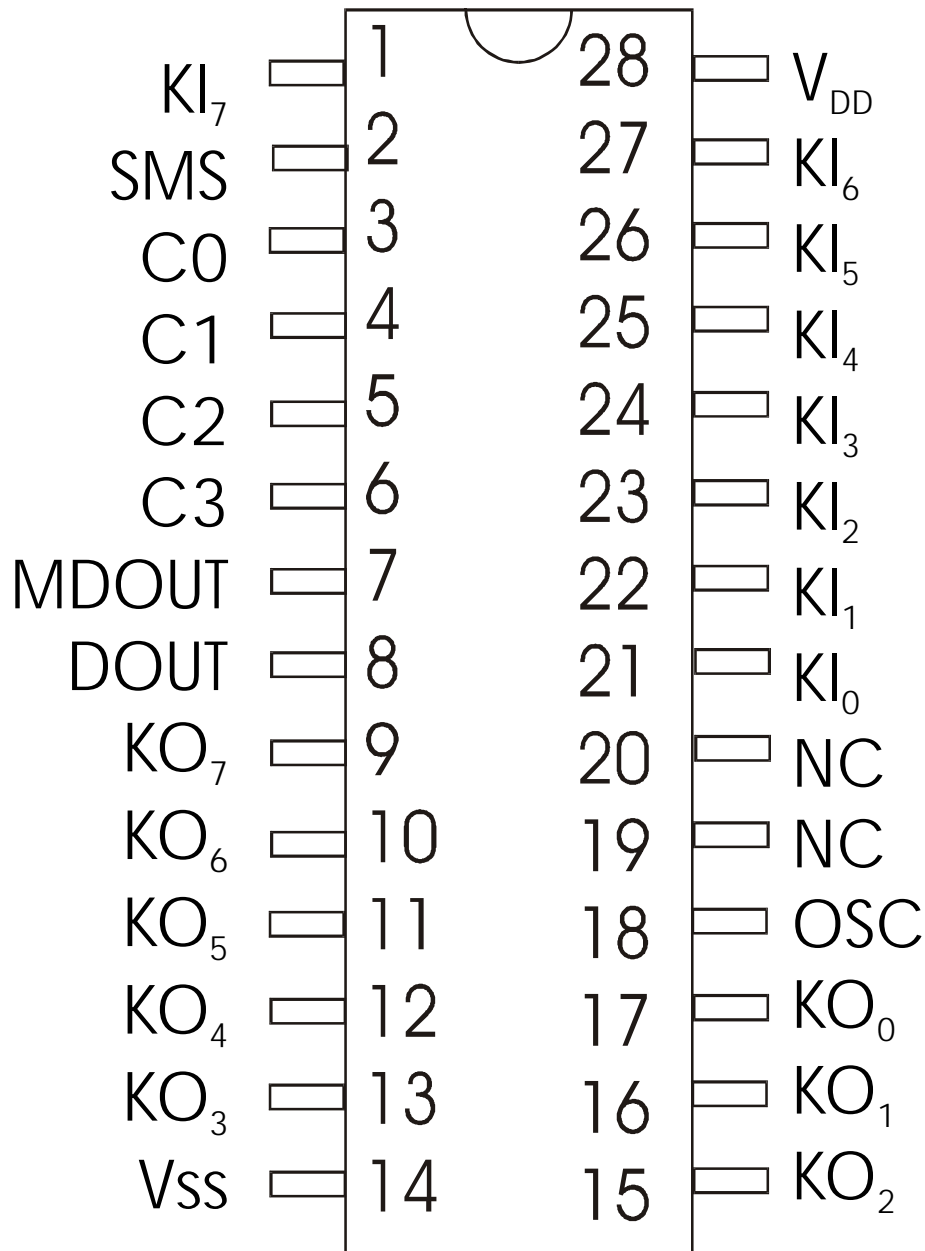
Applications

- Television
- VCR
- Audio Equipment
- Multi-Media System
- Personal Computer

Infrared Remote Control Transmitter

PT2210

Pin Configuration

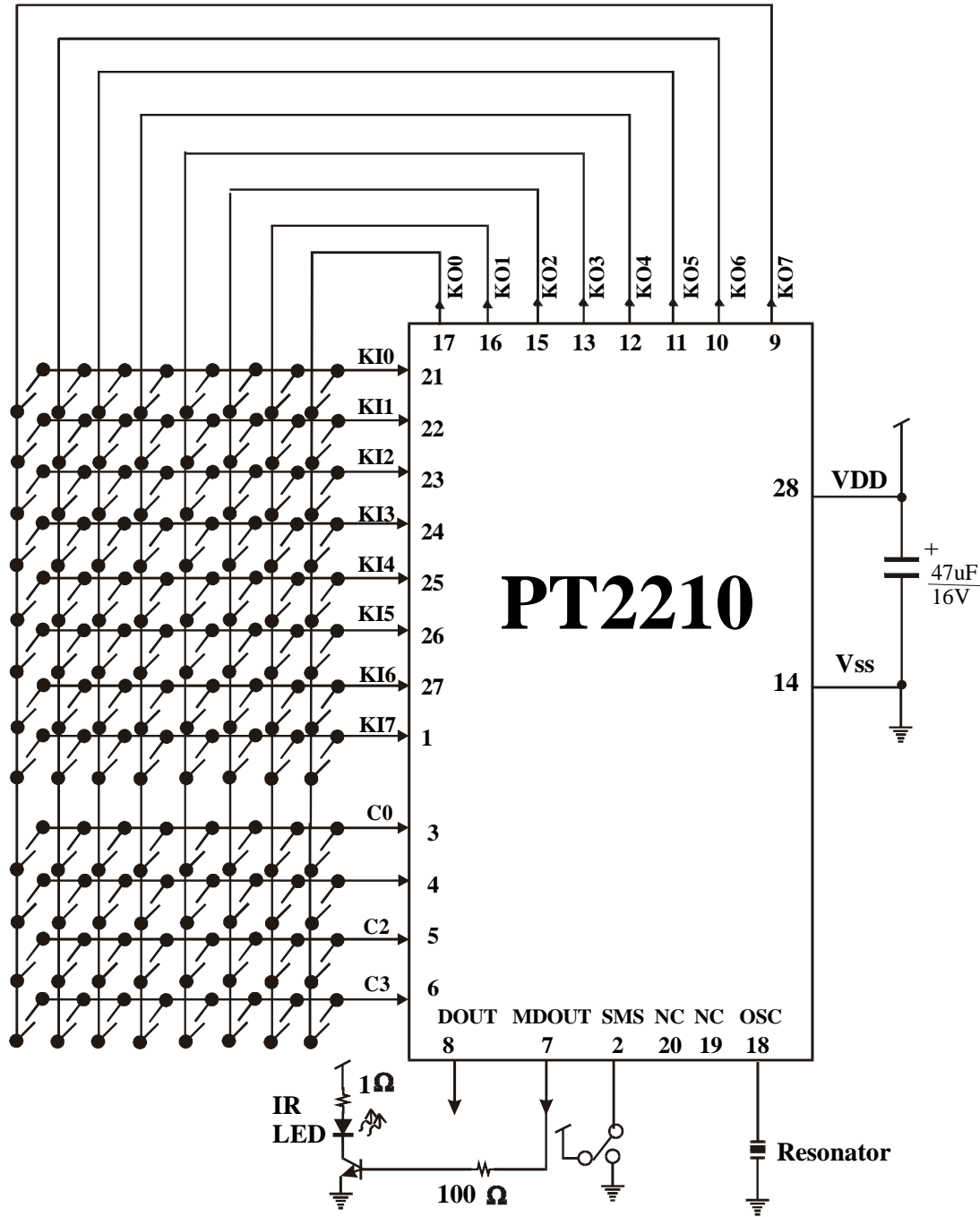


PT2210

Infrared Remote Control Transmitter

PT2210

Application Circuit



Note: There is a connection between the C0~C3 Lines and KO0 ~ KO7 Lines if SMS is tied to Vcc.

Infrared Remote Control Transmitter

PT2210

Ordering Information

Valid Part Number	Package
PT2210	28 Pins, SO
PT2210-D	28 Pins, DIP