

Ceramic High Pass Filter

2200 to 5200 MHz

NEW!
HFCN-1910



BLUE CELL™

CASE STYLE: FV1206

Maximum Ratings

Operating Temperature	-55°C to 100°C
Storage Temperature	-55°C to 100°C
RF Power Input*	7W max. at 25°C

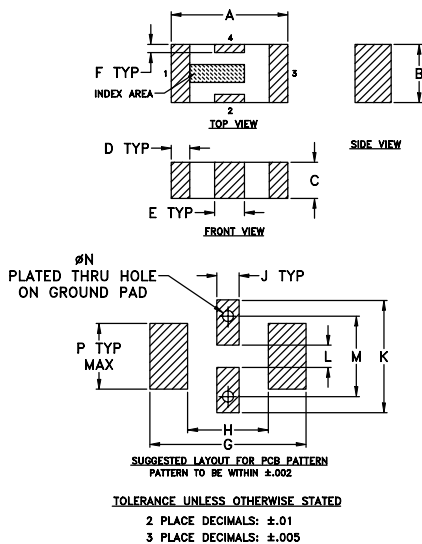
*Passband rating, derate linearly to 3W at 100°C ambient.

Pin Connections

RF IN	1**
RF OUT	3**
GROUND	2,4

** RF IN & RF OUT can be interchanged

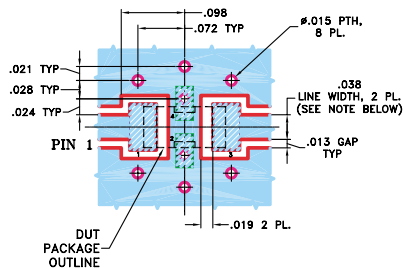
Outline Drawing



Outline Dimensions (inch)

A	B	C	D	E	F	G	H	J	K	L	M	N	P	wt
.126	.063	.037	.024	.087	.024	.009	.087	.024	.122	.024	.087	.012	.071	grams
3.20	1.60	0.94	0.51	0.81	0.23	4.29	2.21	0.61	3.10	0.61	2.21	0.30	1.80	.020

Demo Board MCL P/N: TB-270
Suggested PCB Layout (PL-137)



Features

- low cost
- small size
- 7 sections
- temperature stable
- excellent power handling, 7W

Applications

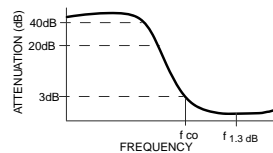
- sub-harmonic rejection
- transmitters/receivers
- lab use

High Pass Filter Electrical Specifications¹ (T_{AMB}=25°C)

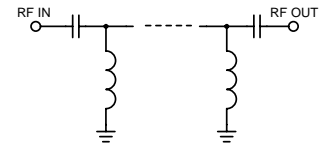
MODEL NO.	STOP BAND (MHz) Min. (loss>40 dB)	STOP BAND (MHz) Max. (loss>20 dB)	f _{co} , MHz Nom. (loss 3 dB) Typ.	PASSBAND (MHz) Max. (loss<1.3 dB)	PASSBAND (MHz) Typ. (loss<2 dB)	VSWR Typ. Frequency (MHz) 1.5:1	POWER INPUT (W)	NO. OF SECTIONS
HFCN-1910	1100	1400	1910	2200-4400	2000-5200	20:1	2100-4500	7

1. For Applications requiring DC voltage to be applied to the Input or output, use HFCN-1910D (DC Resistance to ground is 100 Mohms min.)

typical frequency response

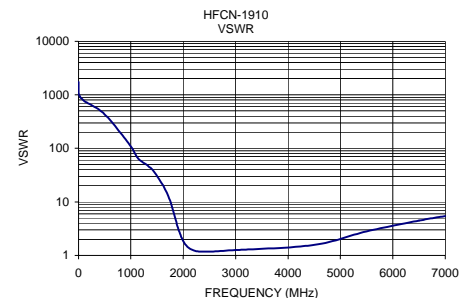
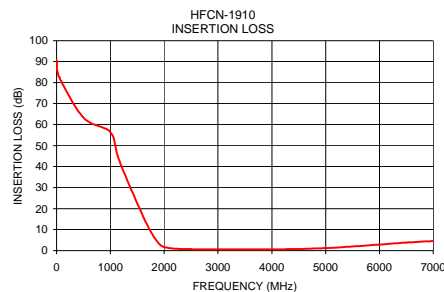


schematic



Typical Performance Data at 25°C

Frequency (MHz)	Insertion Loss (dB)	VSWR (:1)
1.00	90.73	>20
50.00	82.51	>20
500.00	63.30	>20
1000.00	56.39	>20
1140.00	44.58	>20
1430.00	26.44	>20
1720.00	10.44	12.61
1910.00	3.09	3.05
2060.00	1.37	1.53
2300.00	0.83	1.19
3000.00	0.60	1.26
4500.00	0.79	1.57
5500.00	1.97	2.82
6500.00	3.83	4.47
7000.00	4.55	5.44



Mini-Circuits®

INTERNET <http://www.minicircuits.com>

P.O. Box 350166, Brooklyn, New York 11235-0003 (718) 934-4500 Fax (718) 332-4661

Distribution Centers NORTH AMERICA 800-654-7949 • 417-335-5935 • Fax 417-335-5945 • EUROPE 44-1252-832600 • Fax 44-1252-837010

Mini-Circuits ISO 9001 & ISO 14001 Certified

REV. C
M96263
EDR-6437/7
HFCN-1910
RVN/AD/CP
050113