

Ceramic High Pass Filter

1950 to 5000 MHz

NEW!
HFCN-1600



BLUE CELL™

CASE STYLE: FV1206

Maximum Ratings

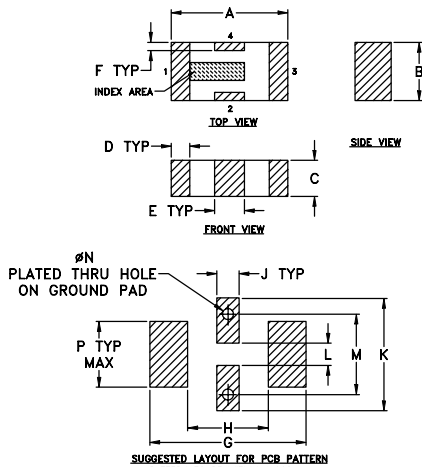
Operating Temperature	-55°C to 100°C
Storage Temperature	-55°C to 100°C
RF Power Input*	7W max. at 25°C

*Passband rating, derate linearly to 3W at 100°C ambient.

Pin Connections

RF IN	1**
RF OUT	3**
GROUND	2,4

** RF IN & RF OUT can be interchanged



SUGGESTED LAYOUT FOR PCB PATTERN
PATTERN TO BE WITHIN ±.002

TOLERANCE UNLESS OTHERWISE STATED

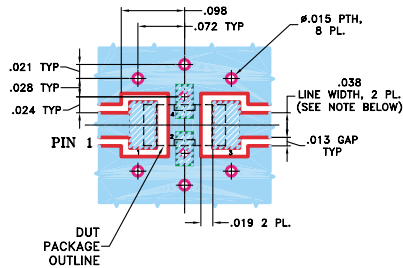
2 PLACE DECIMALS: ±.01
3 PLACE DECIMALS: ±.005

Outline Dimensions (inch)

A	B	C	D	E	F	G
.126	.063	.037	.024	.020	.009	.169
3.20	1.60	0.94	0.51	0.81	0.23	4.29

H	J	K	L	M	N	P	wt
.087	.024	.122	.024	.087	.012	.071	grams
2.21	0.61	3.10	0.61	2.21	0.30	1.80	.020

Demo Board MCL P/N: TB-270
Suggested PCB Layout (PL-137)



NOTE: 1. TRACE WIDTH IS SHOWN FOR ROGERS RO4350 WITH DIELECTRIC THICKNESS .020" ± .0015". COPPER: 1/2 OZ. EACH SIDE. FOR OTHER MATERIALS TRACE WIDTH MAY NEED TO BE MODIFIED.
2. BOTTOM SIDE OF THE PCB IS CONTINUOUS GROUND PLANE.

DENOTES PCB COPPER LAYOUT
 DENOTES COPPER LAND PATTERN FREE OF SOLDERMASK

Features

- low cost
- small size
- 7 sections
- temperature stable
- excellent power handling, 7W

Applications

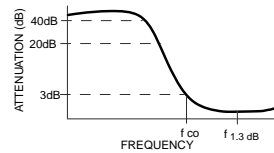
- sub-harmonic rejection
- transmitters/receivers
- lab use

High Pass Filter Electrical Specifications¹ (T_{AMB}=25°C)

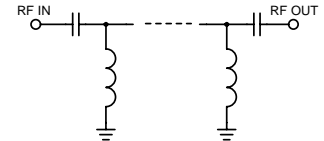
MODEL NO.	STOP BAND (MHz) Min.	f _{co} , MHz Nom. (loss > 3 dB) Typ.	PASSBAND (MHz) (loss < 1.3 dB) Max. (loss < 2 dB) Typ.	VSWR Typ. Frequency Stopband (MHz) 1.5:1	POWER INPUT (W)	NO. OF SECTIONS
HFCN-1600	1090	1290	1600	1950-4000 1650-5000	20:1 1700-4000	7

1. For Applications requiring DC voltage to be applied to the Input or output, use HFCN-1600D (DC Resistance to ground is 100 Mohms min.)

typical frequency response

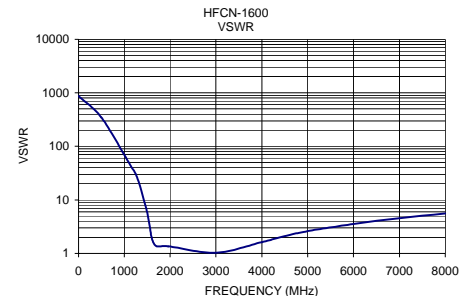
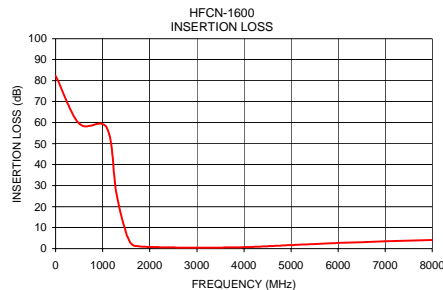


schematic



Typical Performance Data at 25°C

Frequency (MHz)	Insertion Loss (dB)	VSWR (:1)
1.00	82.28	>20
500.00	59.56	>20
1090.00	57.39	>20
1290.00	26.41	>20
1500.00	7.28	5.70
1600.00	2.52	1.95
1700.00	1.28	1.36
1960.00	0.80	1.36
3000.00	0.44	1.03
4000.00	0.70	1.63
4500.00	1.14	2.10
5000.00	1.70	2.61
6000.00	2.66	3.54
7000.00	3.49	4.55
8000.00	4.12	5.59



Mini-Circuits®

Distribution Centers NORTH AMERICA 800-654-7949 • 417-335-5935 • Fax 417-335-5945 • EUROPE 44-1252-832600 • Fax 44-1252-837010

Mini-Circuits ISO 9001 & ISO 14001 Certified

INTERNET <http://www.minicircuits.com>

P.O. Box 350166, Brooklyn, New York 11235-0003 (718) 934-4500 Fax (718) 332-4661

REV. C
M96263
EDR-6437/3
HFCN-1600
RVN/AD/CP
050113