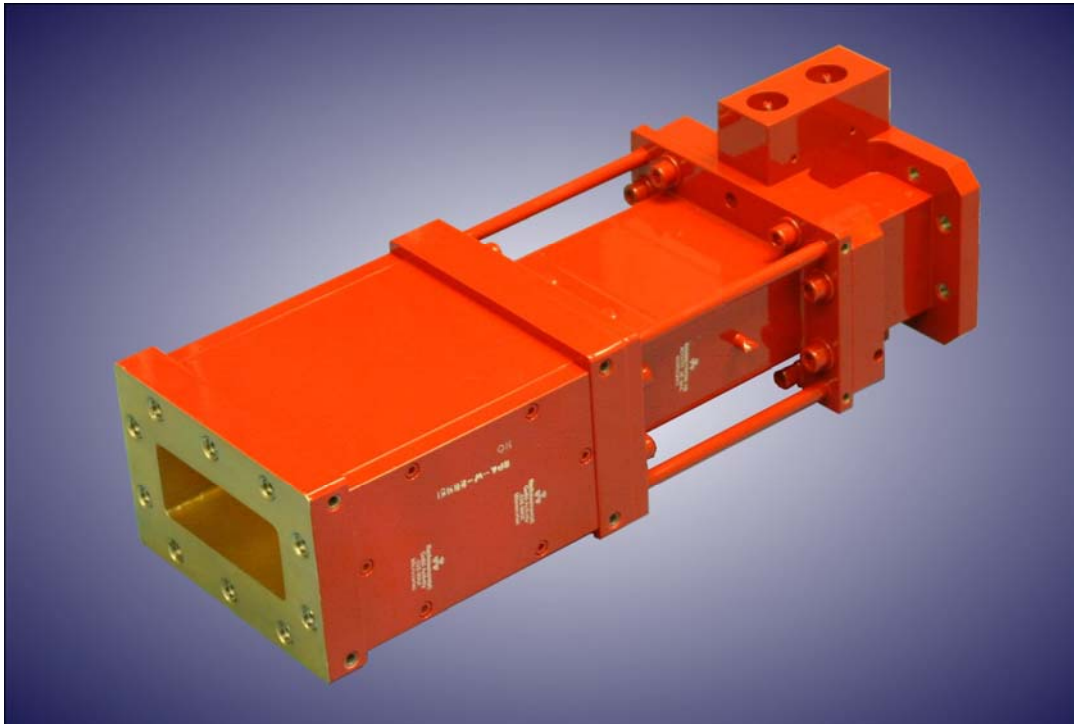


VDS1124 TR Limiter



Features:

- **Frequency: 2.7 to 2.9 GHz**
- **Peak Power:**
 - Normal Operating: 5 kW
 - Fault: 50 kW max
- **Duty Cycle: 0.10 max.**
- **Pulsewidth: 100 μ Sec max.**
- **Insertion Loss: 0.5 dB max**
- **Flat Power: 50 mW max**
- **Spike Power: 150 mW max**
- **Recovery Time: 3.0 μ Sec max**

Description:

S-Band high power Pre-TR, TR Limiter.

150 Sohier Road
Beverly, Massachusetts 01915



Phone: 978-922-6000 Fax: 978-922-2736
E-Mail: marketing@bmd.cpii.com
Internet: www.cpii.com/bmd