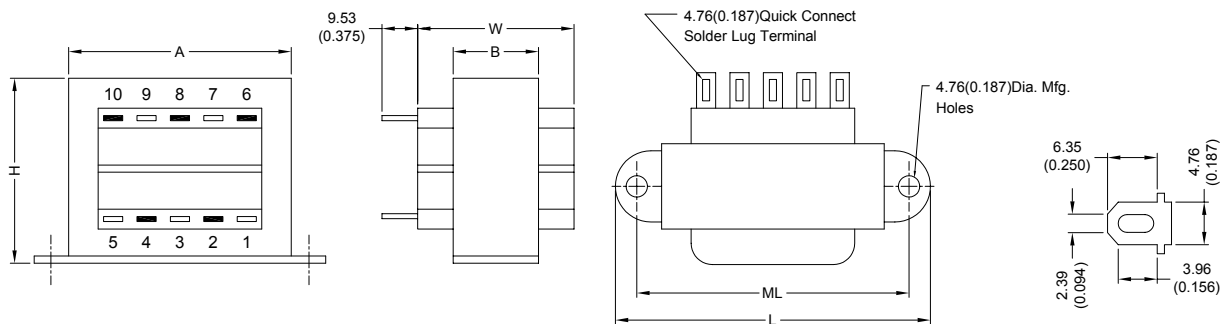


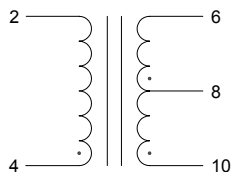
### 1. CONFIGURATION & DIMENSIONS :



UNIT : mm (inch)

SIZE	VA	L	W	H	A	B	ML	gram
6	30	82.55 (3.250)	42.88 (1.688)	49.23 (1.938)	74.63 (2.938)	27.00 (1.063)	71.45 (2.813)	498.95

### 2. SCHEMATIC :



" . " indicates polarity

### 3. ELECTRICAL CHARACTERISTICS ( @ 25°C ) :

- |                                      |                              |
|--------------------------------------|------------------------------|
| a. Primary Voltage                   | AC 115 V 60 Hz .             |
| b. No Load Primary Current           | Less Than 35mA .             |
| c. Secondary Voltage (±5%)           |                              |
| Pin 6-10 C.T. Pin 8                  | AC 42.20 V .                 |
| d. Secondary Load Current            | 0.85A .                      |
| e. Full Load Primary Current         | Less Than 340mA .            |
| f. Full Load Secondary Voltage (±5%) | 36.00V .                     |
| Pin 6-10 C.T. Pin 8                  |                              |
| g. DC Resistance                     |                              |
| Pin 2-4                              | Primary = 22.50 Ohm .        |
| Pin 6-8                              | Secondary-1 = 1.23 Ohm .     |
| Pin 8-10                             | Secondary-2 = 1.46 Ohm .     |
| h. Insulation Resistance             | DC 500V 100Meg Ohm Of More . |
| i. Withstand Voltage (Hi-Pot)        | AC 2500V 60Hz 1 Minutes .    |
| j. Temperature Rise                  | Less Than 60 Deg C .         |
| k. Core Size                         | EI-57 x 26.00 m/m .          |

Wires & Wire Gauge

Primary Pin 2-4

Secondary Pin 6-8-10

854 Turns Diameter : 0.28 mm  
 0-120-252 Turns Diameter : 0.45 mm



**RoHS Compliant**

NOTE : Specifications subject to change without notice. Please check our website for latest information.

25.02.2008



**SUPERWORLD ELECTRONICS (S) PTE LTD**

PG. 1