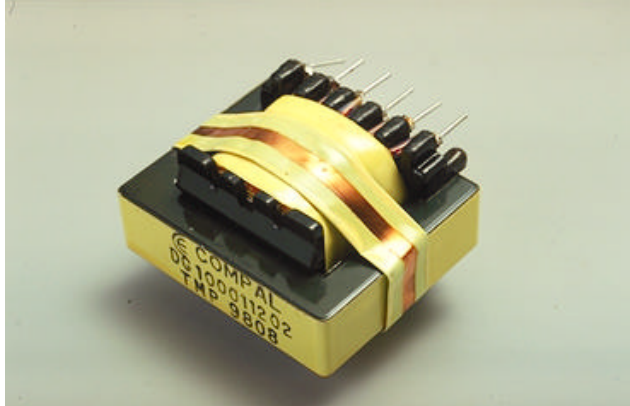


SWITCHING POWER TRANSFORMER

MODEL NO. : MPT 4012/MPT 4215/MPT 4220

FEATURES:

- * DESIGNED TO MEET UL., VDE, CSA, IEC. REQUIREMENTS.
- * COST EFFECTIVE DESIGN
- * STANDARDIZED PACKAGING
- * HIGH QUALITY STANDARD
- * CUSTOMER' S MODIFICATION OF CATALOG PARTS AVAILABEL ON REQUEST
- * EE-55 IS AVAILABLE FOR SPECIAL DESIGN



TAIPEI MULTIPOWER OFFERS EI40, EE4215, EE4220 ETC FERRITE E CORE SWITCHING TRANSFORMER FOR SWITCHING POWER SUPPLIES APPLICATIONS AT 20 KHZ OR HIGHER.

| | MPT 4012 | MPT 4215 | MPT 4220 |
|--------------------|----------|----------|----------|
| POWER CAPACITY | - | 235W | 300W |
| Ae cm ² | 1.48 | 1.82 | 2.30 |
| Le cm | 7.70 | 9.70 | 9.70 |
| Aw cm | 1.60 | 2.87 | 2.87 |



台北沛波電子股份有限公司

TAIPEI MULTIPOWER ELECTRONIC CO., LTD.
2, 4TH FL., NO.8, LANE 54, CHUNG-CHENG
ROAD, HSIN-TIEN CITY, TAIPEI, TAIWAN, R.O.C.
TEL: (02)2917-9117 FAX: (02)2918-1561

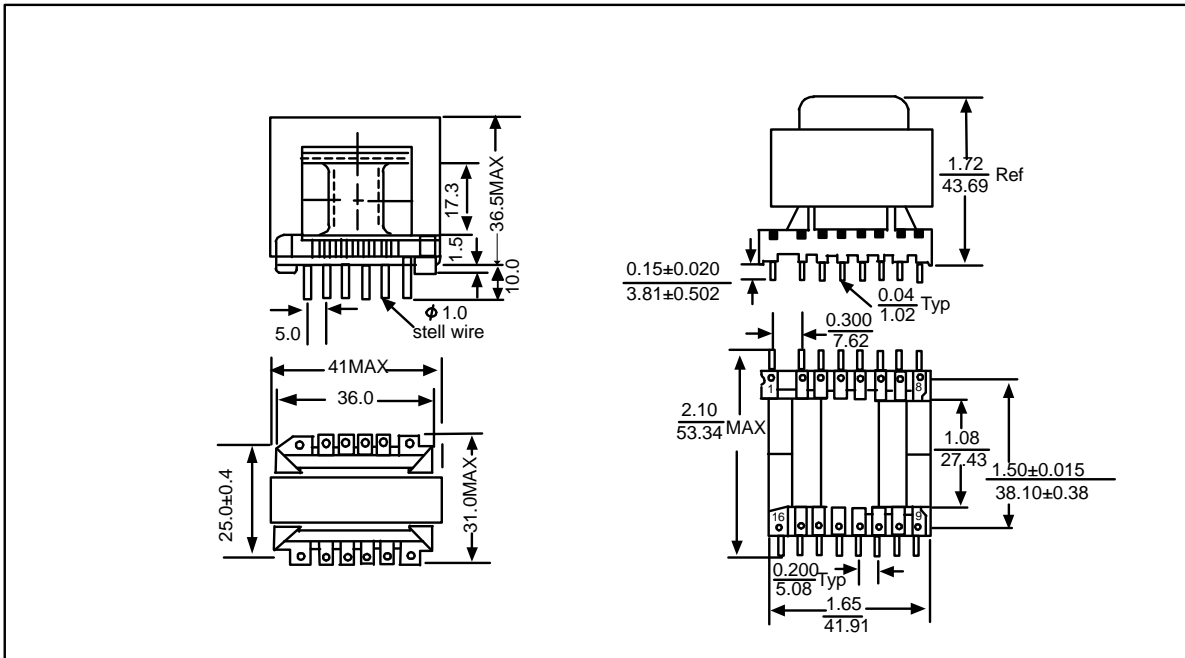
U.S.A. OFFICE

TMP INC.

1701E. EDINGER AVE., #F1
SANTA ANA, CA 92705 U.S.A.
TEL: (714)558-8028 FAX: (714)567-2242

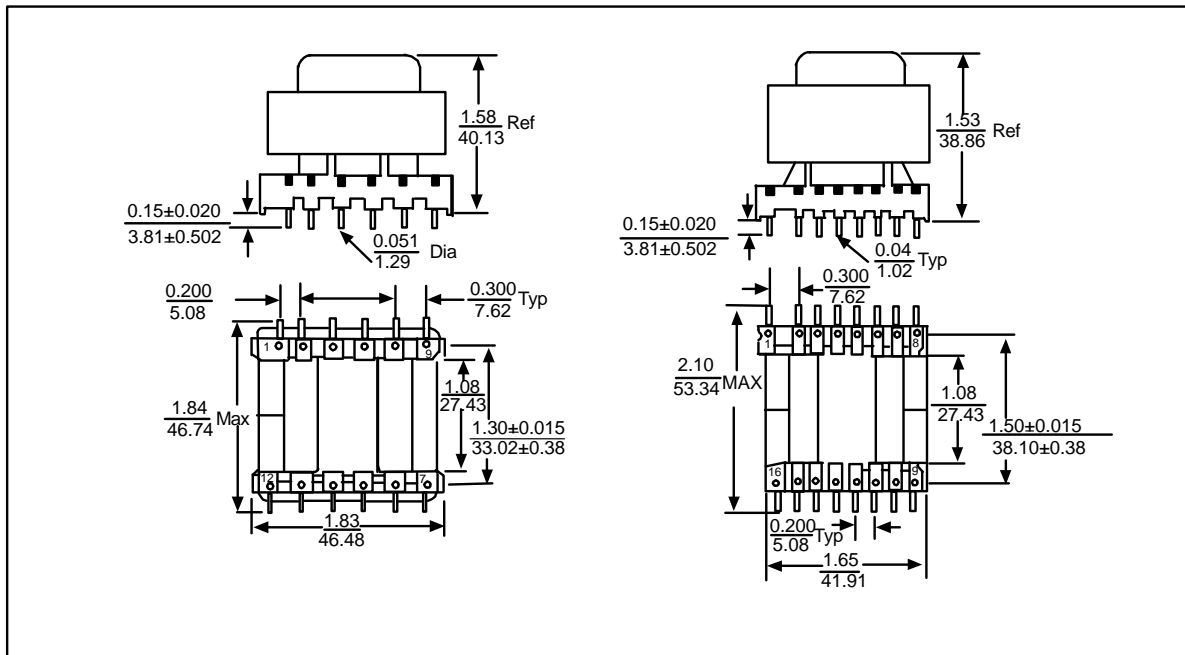
MPT4012

MPT4220

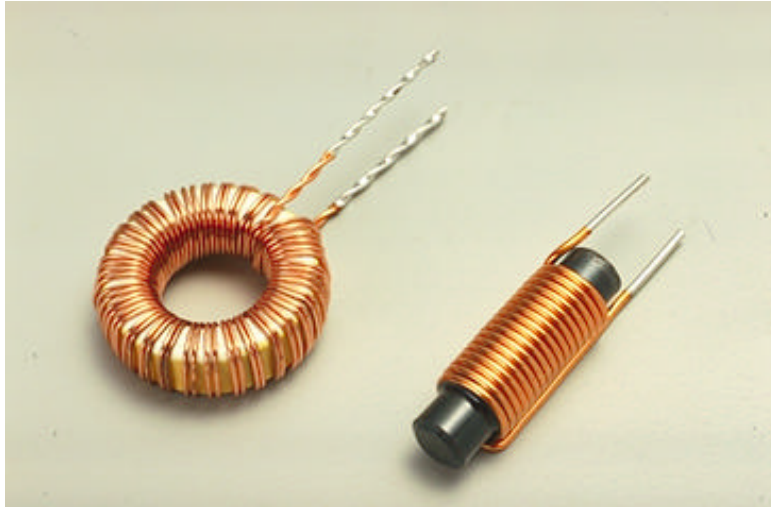


MPT4215-1

MPT4215-2



OUTPUT POWER CHOKE



Taipei Multipower offers two kinds of standard Power Choke for the outputs of Switching Mode Power Supply, one is 'R' Type, wire wound on 'ROD' shape core, can be used for 3, 5, 10 Ampere output current, the other is 'T' Type, wire wound on 'TOROIDAL' core, can be used from 2, 3, 5 to 60 Ampere (OEM case) current rating, they are applicable in all types of Switching Power Supply Circuits including Forward Converter, Flyback and Bridge type.

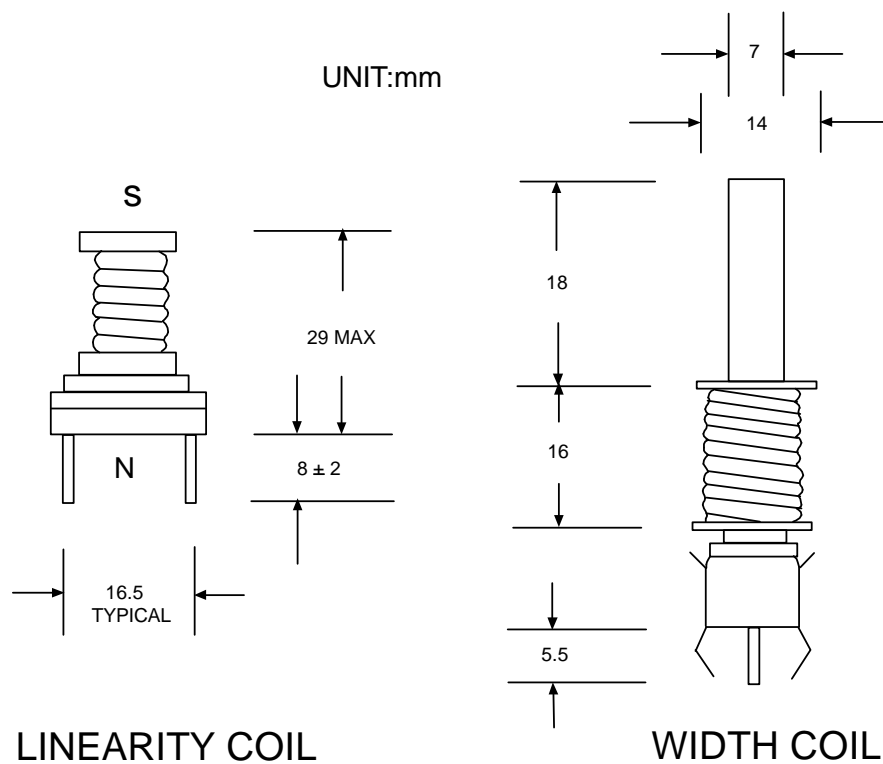
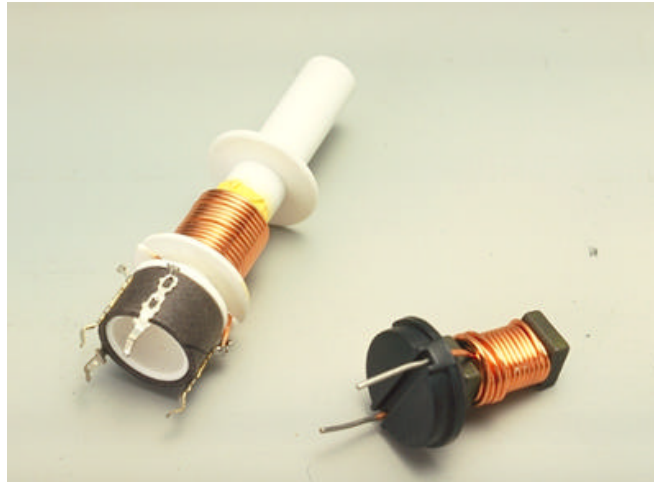
FEATURES:

| | |
|---------------------|---|
| CURRENT RANGE: | 3, 5, 10 AMPERE (R TYPE) 2, 3, 5 AMPERE (T TYPE) |
| INDUCTANCE: | 5-600 MICROHENRY 26-100 MICROHENRY |
| TEMPERATURE RISING: | LESS THAN 40 DEGREE C AT RATED CURRENT. |



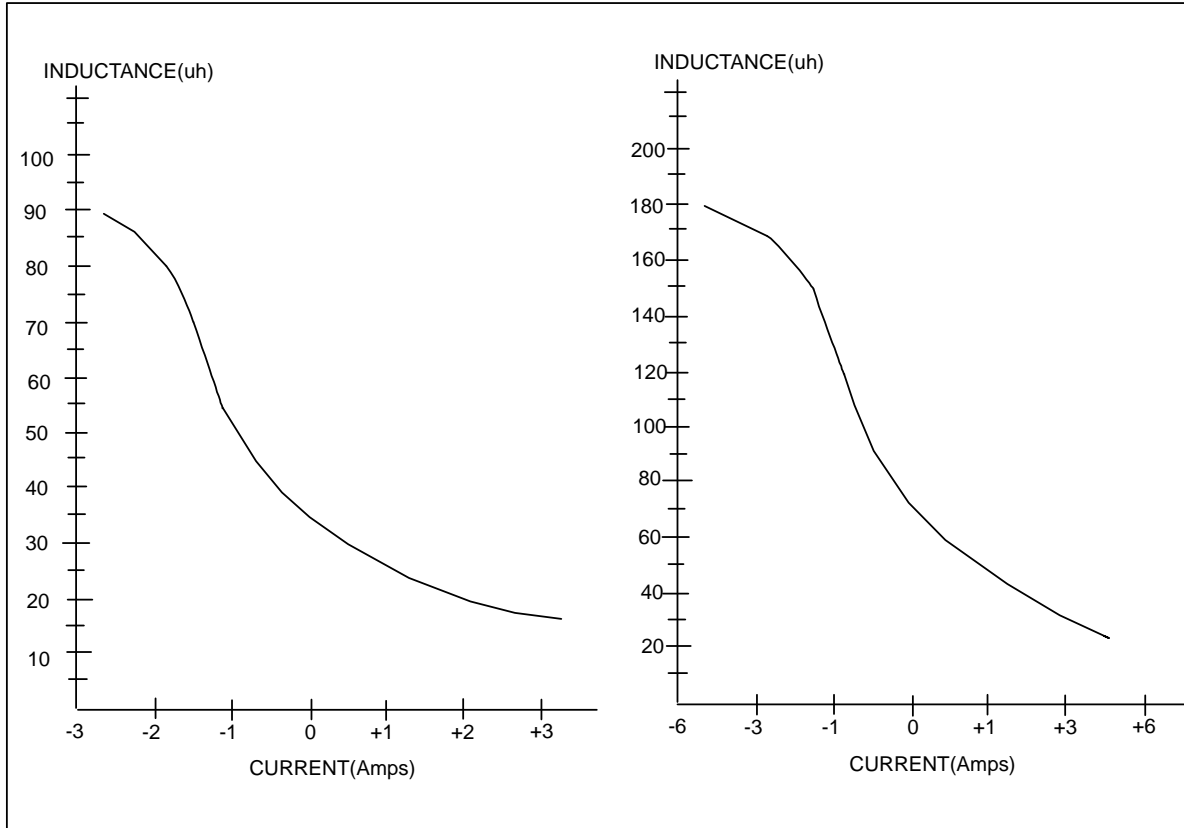
台北沛波電子股份有限公司
TAIPEI MULTIPOWER ELECTRONIC CO., LTD.
2ND. FL., 542-7, CHUNG-CHENG ROAD,
HSIN-TIEN CITY, TAIPEI, TAIWAN, R.O.C.
TEL: (02)8667-2078 FAX: (02)8667-2080

LINEARITY/ WIDTH COIL FOR VIDEO DISPLAY



TMP 台北沛波電子股份有限公司
TAIPEI MULTIPower ELECTRONIC CO., LTD.
 2ND. FL., 542-7, CHUNG-CHENG ROAD,
 Hsin-tien City, Taipei, Taiwan, R.O.C.
 TEL: (02)8667-2078 FAX: (02)8667-2006

INDUCTANCE VS CURRENT CURVES FOR LINEARITY COIL



ELECTRICAL SPECIFICATION FOR WIDTH COIL

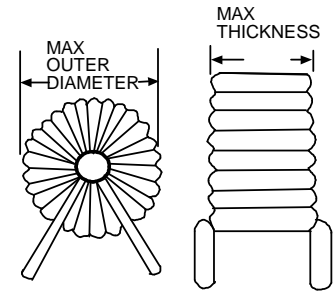
| | |
|------------|--------------------------|
| INDUCTANCE | : 8 μ H ~ 38 μ H |
| D.C.R. | : 0.05 OHM |
| TURNS | : 36-1/2 (FOR REF) |
| TORSION | : 0.6 KG/CM |

TNP 台北沛波電子股份有限公司
TAIPEI MULTIPower ELECTRONIC CO., LTD.
2ND. FL., 542-7, CHUNG-CHENG ROAD,
HSIN-TIEN CITY, TAIPEI, TAIWAN, R.O.C.
TEL: (02)8667-2078 FAX: (02)8667-2080

ELECTRICAL AND MECHANICAL SPECIFICATIONS:

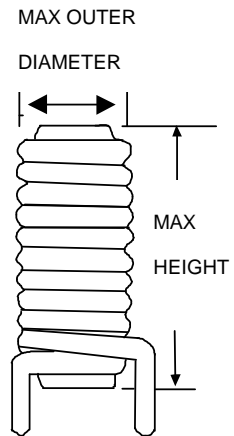
“T” TYPE POWER CHOKE

| PART NO | CURRENT RATING (A) | D.C.R (mOHM) | 20 KHZ INDUCTANCE (uH) | WIRE SIZE (mm) | MAX OUTER DIAMETER (mm) | MAX THICKNESS (mm) |
|-----------|--------------------|--------------|------------------------|----------------|-------------------------|--------------------|
| TPC-02026 | 2 | 45 | 26 | 0.6 | 17 | 9 |
| TPC-02125 | 2 | 95 | 125 | 0.6 | 17 | 12 |
| TPC-03040 | 3 | 35 | 40 | 0.8 | 22 | 12 |
| TPC-03110 | 3 | 55 | 110 | 0.8 | 22 | 12 |
| TPC-05064 | 5 | 30 | 64 | 1.0 | 26 | 13 |
| TPC-05100 | 5 | 40 | 100 | 1.0 | 26 | 13 |



“R” TYPE POWER CHOKE

| PART NO | CURRENT RATING (A) | D.C.R (mOHM) | 20 KHZ INDUCTANCE (UH) | WIRE SIZE (mm) | MAX OUTER DIAMETER (mm) | MAX THICKNESS (mm) |
|-----------|--------------------|--------------|------------------------|----------------|-------------------------|--------------------|
| RPC-03005 | 3 | 18 | 5 | 0.8 | 12.7 | 17.0 |
| RPC-03100 | 3 | 60 | 100 | 0.8 | 12.7 | 26.5 |
| RPC-05025 | 5 | 20 | 25 | 1.0 | 12.7 | 23.0 |
| RPC-05400 | 5 | 110 | 400 | 1.0 | 25.0 | 21.5 |
| RPC-10100 | 10 | 32 | 100 | 1.30 | 28.0 | 21.5 |
| RPC-10300 | 10 | 52 | 300 | 1.30 | 35.6 | 25.5 |

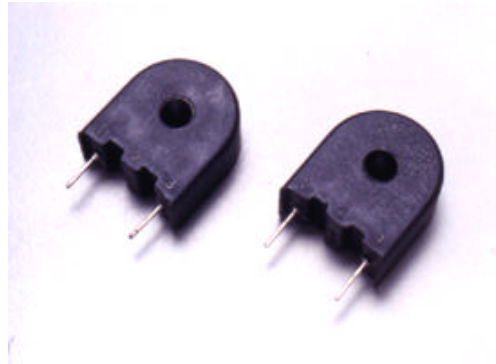


台北沛波電子股份有限公司
TAIPEI MULTIPower ELECTRONIC CO., LTD.
 2, 4TH FL., NO.8, LANE 54, CHUNG-CHENG ROAD, HSIN-TIEN CITY, TAIPEI, TAIWAN, R.O.C.
 TEL: (02)2917-9117 FAX: (02)2918-1561

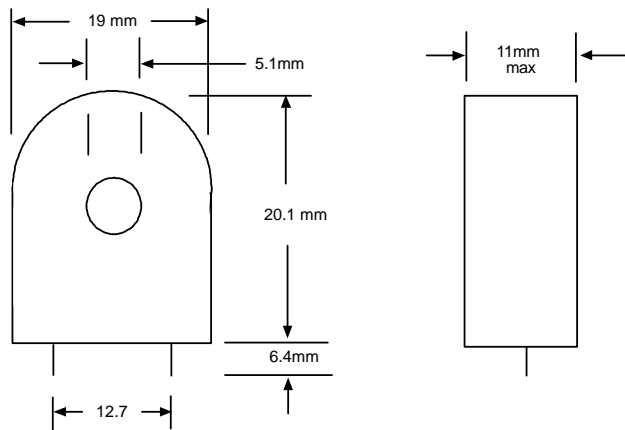
U.S.A. OFFICE
TMP INC.

1701E. EDINGER AVE., #F1
 SANTA ANA, CA 92705 U.S.A.
 TEL: (714)558-8028 FAX: (714)567-2242

CURRENT SENSOR



I



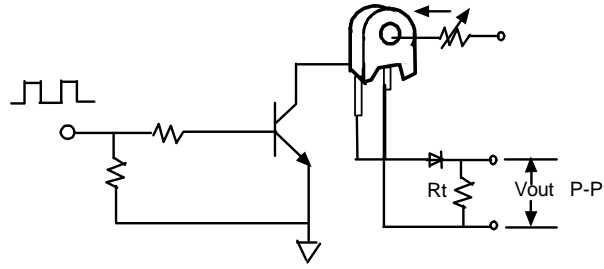
| ELECTRICAL SPECIFICATION | CT100-1 | CT100-2 | CT100-3 |
|--------------------------|---------|----------|----------|
| CURRENT RANGE | 2-40A | 2--20A | 2-35A |
| FREQ RESPONSE | 5-50KHZ | 5-50KHZ | 1-400KHZ |
| LOAD RESISTANCE | 50 OHMS | 100 OHMS | 200 OHMS |



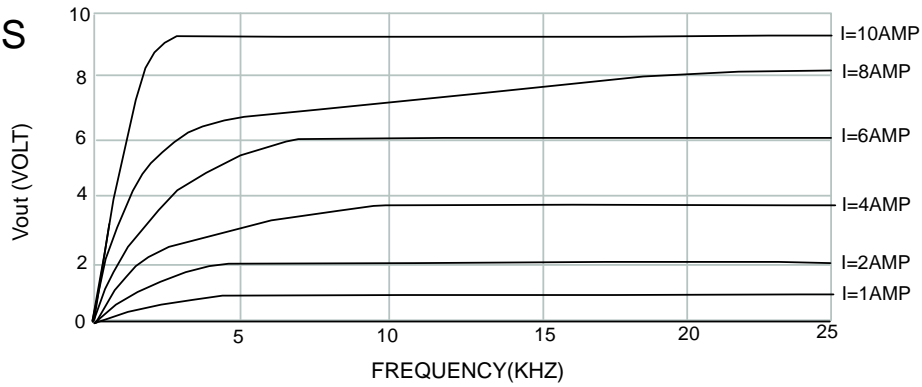
台北沛波電子股份有限公司
TAIPEI MULTIPower ELECTRONIC CO., LTD.
 2, 4TH FL., NO.8, LANE 54, CHUNG-CHENG
 ROAD, HSIN-TIEN CITY, TAIPEI, TAIWAN, R.O.C.
 TEL: (02)2917-9117 FAX: (02)2918-1561

U.S.A. OFFICE
TMP INC.
 1701E. EDINGER AVE., #F1
 SANTA ANA, CA 92705 U.S.A.
 TEL: (714)558-8028 FAX: (714)567-2242

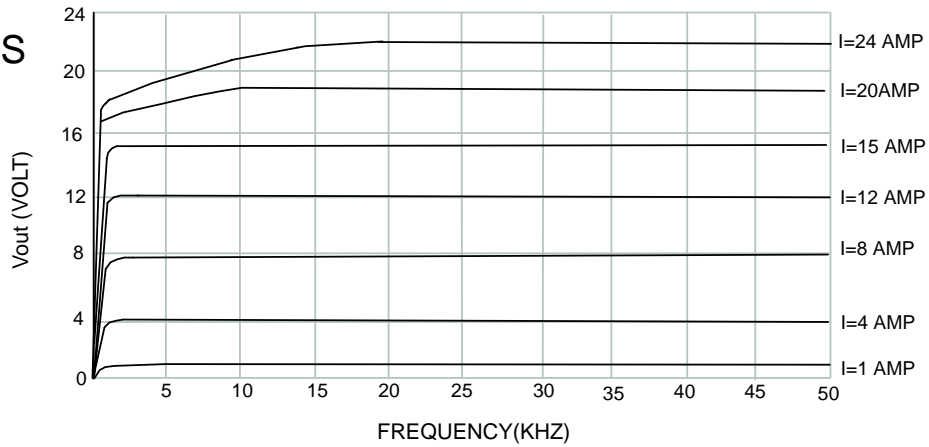
TEST CIRCUIT



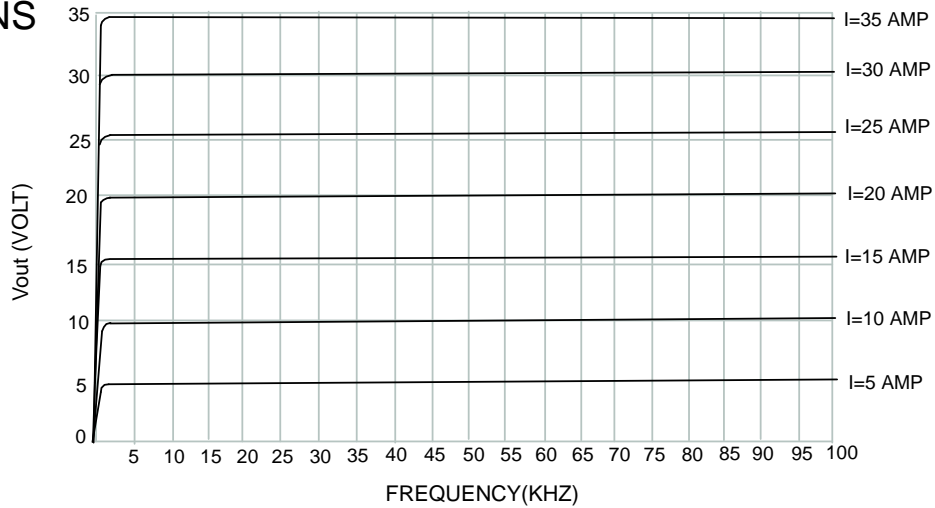
**CT100-1
50 TURNS**



**CT100-2
100 TURNS**



**CT100-3
200 TURNS**

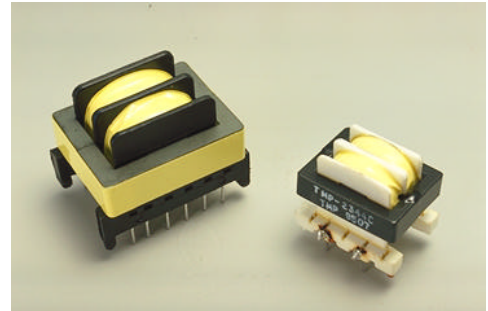


COMMON MODE CHOKE

MODEL NO. : MPC 2565/MPC 3590

FEATURES:

- * STANDARD E CORE PACKAGE
- * COST EFFECTIVE DESIGN
- * DESIGNS MEETING UL, CSA, VDE, IEC REQUIREMENTS
- * 3750VRMS DIELECTRIC STRENGTH
- * TOROIDAL STRUCTURES ALSO AVAILABLE ON REQUEST



TAIPEI MULTIPOWER OFFERS STANDARD EE25.4, AND EE35 FERRITE CORE PACKAGES AND COMMON MODE CHOKES FOR USE IN INPUT FILTER CIRCUITS OF SWITCHING POWER APPLICATIONS AT 20KHZ OR HIGHER TO REDUCE AC LINE CONDUCTED INTERFERENCE.

ELECTRICAL SPECIFICATION:

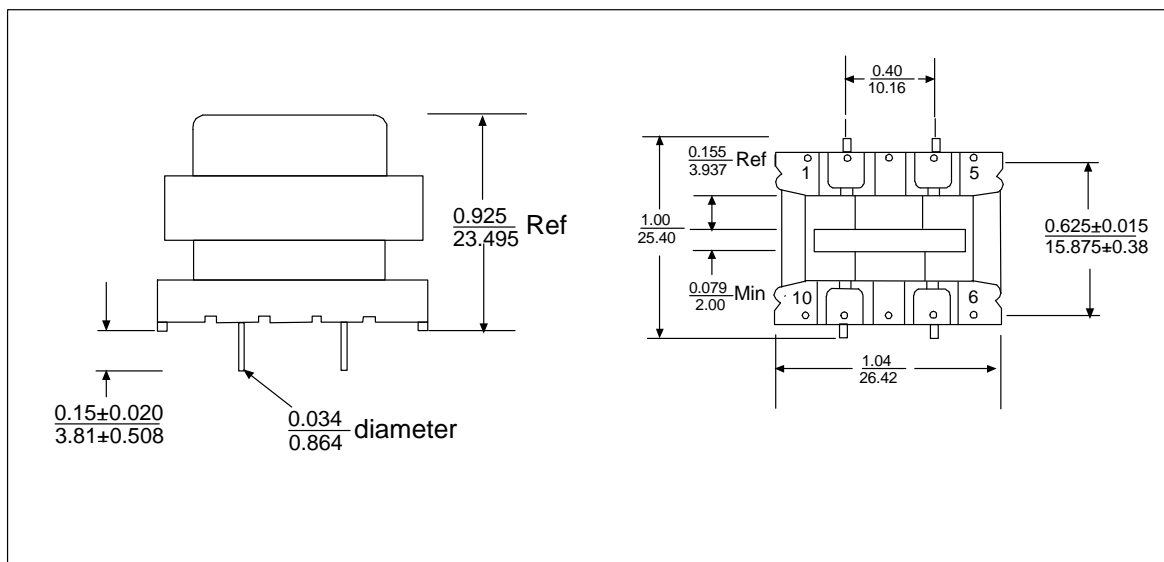
| | MPC 2565 | MPC 3590 |
|---------------------|------------|-----------|
| CURRENT RATING* | 1.0 AMP | 3.0 AMP |
| INDUCTANCE/ SECTION | 4.5 mH MIN | 5 mH MIN |
| DCR | 0.2Ω MAX | 0.1Ω MAX |
| LEAKAGE INDUCTANCE | 75 μH MAX | 90 μH MAX |

- BASED ON 400 CIRCULAR MILES/AMP

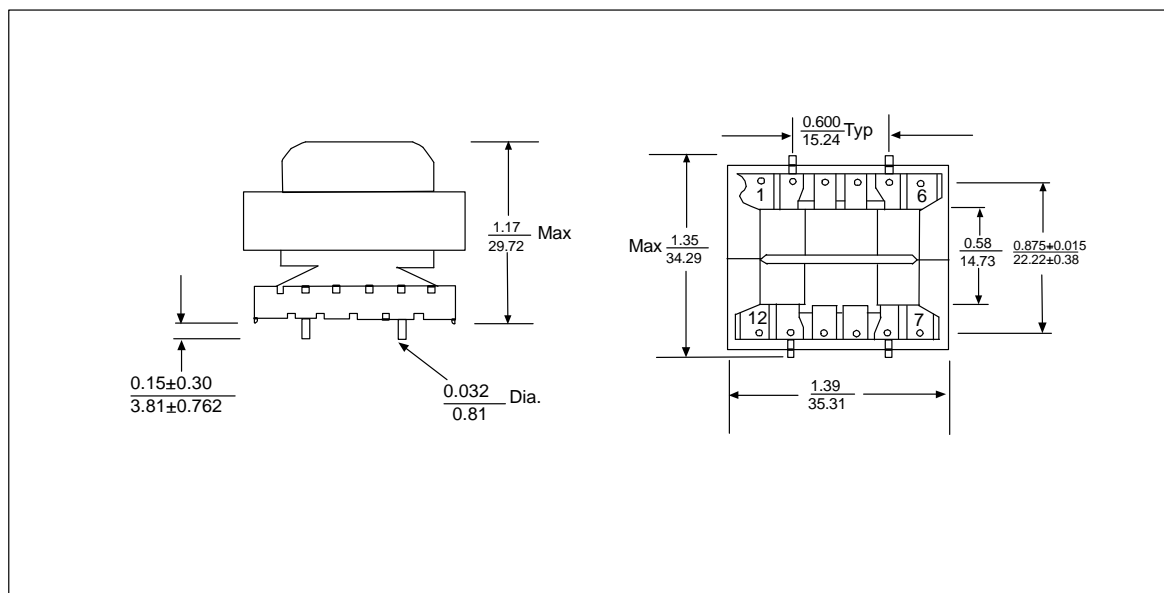


台北沛波電子股份有限公司
TAIPEI MULTIPOWER ELECTRONIC CO., LTD.
2ND. FL., 542-7, CHUNG-CHENG ROAD,
HSIN-TIEN CITY, TAIPEI, TAIWAN, R.O.C.
TEL: (02)8667-2078 FAX: (02)8667-2080

MPC 2565



MPC 3590



台北沛波電子股份有限公司
TAIPEI MULTIPower ELECTRONIC CO., LTD.
 2ND. FL., 542-7, CHUNG-CHENG ROAD,
 HSIN-TIEN CITY, TAIPEI, TAIWAN, R.O.C.
 TEL: (02)8667-2078 FAX: (02)8667-2080