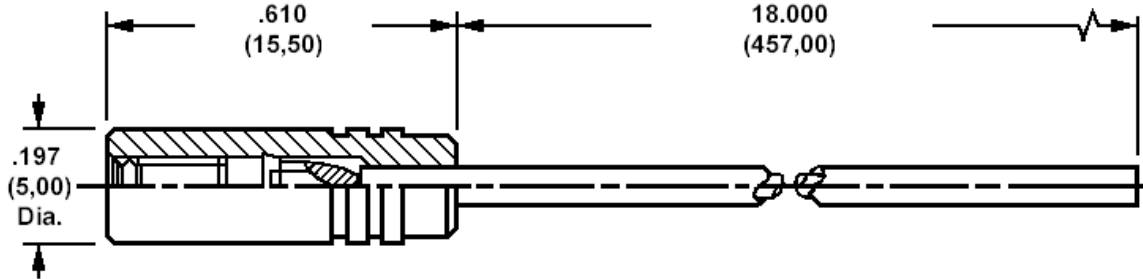


### 445-8600, Connectaball Test Lead



**How to order code**  
**445-8600-01-XX-YY**

Basic Part No (XX = plating finish, YY = Colour. See tables for options)

MATERIALS					
Component	Material	Finish (-XX)			
		-01	-03	-93	-04
Terminal	Brass	Silver	Gold over Nickel		Tin
			50μ" (1,25μM) Au	10μ" (0,25μM) Au	
Insulator	Teflon				
Cable	PTFE coated, 19 x 32AWG (0.2)				

COLOURS (-YY)	
-10	Black
-12	Red
-19	White