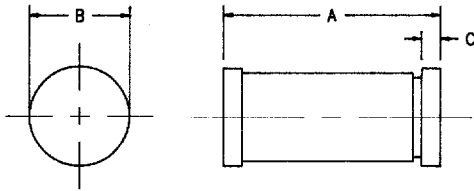


# 1 Amp Schottky Rectifier HSM150, HSM160



Dim.	Inches		Millimeter		Notes
	Minimum	Maximum	Minimum	Maximum	
A	.189	.205	4.80	5.20	
B	.094	.105	2.39	2.66	Dia.
C	.016	.022	.41	.55	

GLASS HERMETIC DO213AB

Microsemi Catalog Number	Working Peak Reverse Voltage	Repetitive Peak Reverse Voltage	
HSM150 HSM160	50V 60V	50V 60V	<ul style="list-style-type: none"> <li>• Schottky Barrier Rectifier</li> <li>• Guard Ring Protection</li> <li>• 150°C Junction Temperature</li> <li>• VRRM 50 to 60 Volts</li> </ul>

Electrical Characteristics		
Average forward current	IF(AV) 1.0 Amps	TA = 118°C, Square wave, RθJC = 45°C/W
Maximum surge current	IFSM 75 Amps	8.3ms, half sine, TJ = 150°C
Max peak forward voltage	VFM .51 Volts	IFM = 0.1A; TJ = 25°C*
Max peak forward voltage	VFM .69 Volts	IFM = 1.0A; TJ = 25°C*
Max peak reverse current	IRM 100 μA	VRRM, TJ = 25°C
Typical junction capacitance	CJ 55pF	VR = 5.0V, TJ = 25°C
*Pulse test: Pulse width 300 μsec, Duty cycle 2%		

Thermal and Mechanical Characteristics		
Storage temperature range	TSTG	-65°C to + 175°C
Operating junction temp range	TJ	-65°C to + 150°C
Maximum thermal resistance	RθJC	45°C/W Junction to case
Weight		.0047 ounces (.012 grams) typical

PH: 303-469-2161  
FAX: 303-466-3775

**Microsemi Corp.**  
**Colorado**

C-11

# HSM150, HSM160

Figure 1  
Typical Forward Characteristics

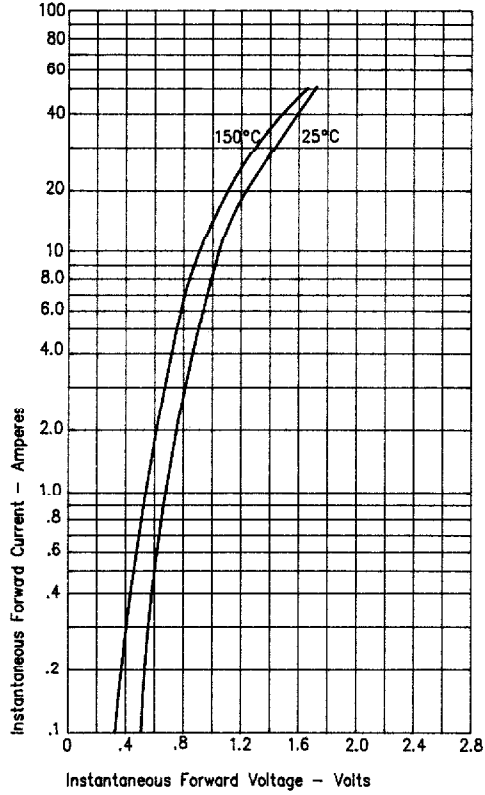


Figure 3  
Typical Junction Capacitance

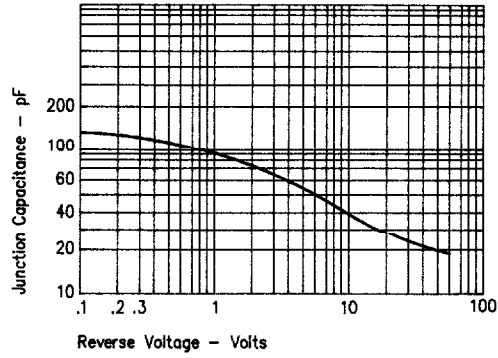


Figure 2  
Typical Forward Characteristics

