

SMMP Connector

PRODUCT DESCRIPTION

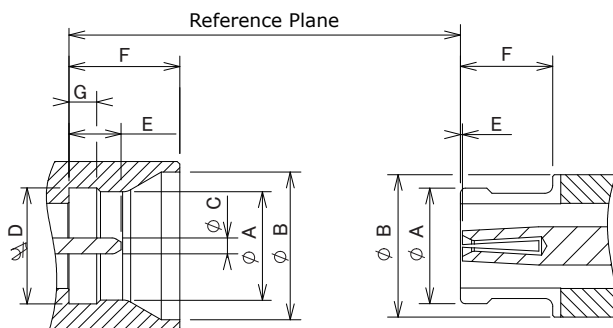
SMMP connector is extremely small connector which can be used at range from DC~65GHz. Compared to the SMP series, the SMMP series are much smaller in size. It is also easy to handle because of its push-on mating style. With its compact design and high performance, SMMP connector is used in many applications such as optical communications and instruments.



- Compliant with MIL-STD-348A
- Operating frequency range DC~65GHz
- Push-on mating style
- Hermetic type and PCB type are available
- RoHS(2002/95/EC) Compliant

	Male		Female	
	min.	max.	min.	max.
A	2.11	2.16	-	2.41
B	2.82	2.92	-	2.79
C	0.28	0.33	-	-
D	2.18	2.24	-	-
E	0.76	1.14	0.00	0.20
F	2.08	2.13	1.73	-
G	0.53	0.58	-	-

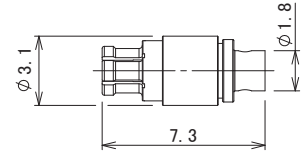
Electrical Characteristics		
50Ω	Impedance	
65GHz	Frequency Range	
160Vrms	Voltage Rating	
≤1.5 at 65GHz	VSWR	
5000MΩ	Insulation Resistance	
500Vrms	Dielectric Withstanding Voltage	
≤6.0mΩ	Center	Contact Resistance
≤2.0mΩ	Outer	Contact Resistance
Mechanical Characteristics		
≤19N	Force to Engage	
≥29N	Force to Disengage	
100 cycles	Durability	
-55°C~+155°C	Operating Temperature	
Materials		
Brass, Kover	Plug	Body
Beryllium Copper	Jack	Body
Phosphor Bronze	Male	Center Contact
Beryllium Copper	Female	Center Contact
PTFE, Glass	Insulator	
Finish		
Gold Plating	Body	
Gold Plating	Center Contact	





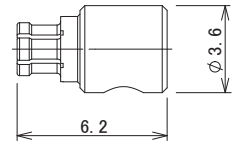
SMMP Straight Jack

Model No.	200-172-00
Cable	047



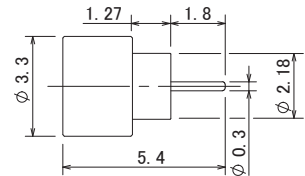
SMMP Right Angle Jack

Model No.	200-173-00
Cable	047



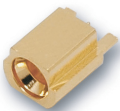
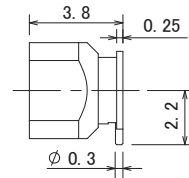
SMMP Plug Receptacle - Hermetic Type

Model No.	200-174-00
	Full Detent



SMMP SMT type Receptacle

Model No.	200-175-00
	Full Detent



SMMP EMT type Receptacle

Model No.	200-176-00
	Full Detent

