

## TABLE OF CONTENTS



### MINIATURE

Mini fuses in five sizes to 20 Amps.

- Slow Blow
- Medium Blow
- Fast Blow
- Super Fast Blow

Fuses **4-5**



### DIAZED

"Bottle" fuses in five sizes to 200 Amps.

- gL/gG - Slow Blow
- - Fast Blow
- gR - Semiconductor Protection

Fuses **6-7**  
Accessories **10-11**



### NEOZED

Compact fuses in three sizes to 100 Amps.

- gL/gG - Slow Blow
- gR - Semiconductor Protection

Fuses **8-9**  
Accessories **10-11**



### CYLINDER

Standard cylinder fuses are available in four sizes to 125 Amps, with or without blown fuse Indicator Pins.

- gL/gF - Line Protection
- aM - Motor Protection
- gR - Semiconductor Protection

Cylinder Bolt fuses are available in two diameters with multiple fixing centers.

- gR - Semiconductor Protection

Fuses - Standard **12-13**  
Fuses - Bolt **14**  
Accessories **15**



### NH

Knife Blade or Stud Mount designs in six sizes with current ratings of 2 to 1600 Amps.

- gL/gG - Line Protection
- aM - Motor Protection
- gR/aR - Semiconductor Protection

Fuses **16-21**  
Accessories **19**



### ITALIAN

Cylinder style fuses available in four sizes with current ratings from 2 to 100 Amps.

- gL - Line Protection

Fuses **22**



### BRITISH

British Line Protection fuses are available with four mounting plate designs with current ratings from 2 to 63 Amps.

• gG - Line Protection  
British Semiconductor fuses are available in single and double body units with multiple diameters and fixing centers.

- aR - Semiconductor Protection

Fuses - Line **23**  
Fuses - Semi. **24-25**



### SQUARE BODY

Square body fuses for semiconductor devices to 1000 Amps.

- aR - Semiconductor Protection

Fuses **26-31**  
Accessories **19**



### HIGH VOLTAGE

Fuses for distribution circuits in four sizes to 36KV.

Fuses **32-33**



### ACCESSORIES

- Screw Caps
- Adapter Screws and Rings
- Fuse Base Covers
- Fuse Bases
- Tools
- End Plates
- Microswitches
- Terminal Covers
- Fuse Handles

**10-11, 15, 19**

Siemens Cross Reference **34-35**

## BRITISH

British fuses are typically used for industrial and general applications to protect cable and motor circuits. They are available with four different mounting plates. The most common sizes are shown here. Please consult Altech if you require sizes not listed.

**Operating Class**  
(IEC 269 / BS 88)

### gG - Line Protection

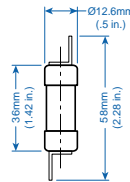
Typically used for cable and motor circuits.

*Typical Marking: gG / Q1*



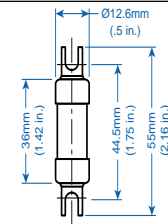
**NS**

Current/ Voltage	Cat. No.	Std. Pk.
2/415V AC	<b>2NSGG</b>	10
4/415V AC	<b>4NSGG</b>	10
6/415V AC	<b>6NSGG</b>	10
10/415V AC	<b>10NSGG</b>	10
16/415V AC	<b>16NSGG</b>	10
20/415V AC	<b>20NSGG</b>	10
25/415V AC	<b>25NSGG</b>	10
32/415V AC	<b>32NSGG</b>	10



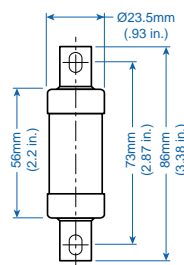
**NIT (A1)**

Current/ Voltage	Cat. No.	Std. Pk.
2/550V AC	<b>2NITGG</b>	10
4/550V AC	<b>4NITGG</b>	10
6/550V AC	<b>6NITGG</b>	10
10/550V AC	<b>10NITGG</b>	10
16/550V AC	<b>16NITGG</b>	10
20/550V AC	<b>20NITGG</b>	10
25/550V AC	<b>25NITGG</b>	10
32/550V AC	<b>32NITGG</b>	10



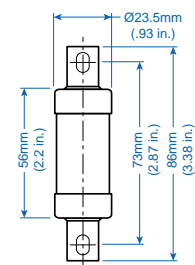
**TIA (A2)**

Current/ Voltage	Cat. No.	Std. Pk.
2/550V AC	<b>2TIAGG</b>	10
4/550V AC	<b>4TIAGG</b>	10
6/550V AC	<b>6TIAGG</b>	10
10/550V AC	<b>10TIAGG</b>	10
16/550V AC	<b>16TIAGG</b>	10
20/550V AC	<b>20TIAGG</b>	10
25/550V AC	<b>25TIAGG</b>	10
32/550V AC	<b>32TIAGG</b>	10



**TIS (A3)**

Current/ Voltage	Cat. No.	Std. Pk.
35/550V AC	<b>35TISGG</b>	10
40/550V AC	<b>40TISGG</b>	10
50/550V AC	<b>50TISGG</b>	10
63/550V AC	<b>63TISGG</b>	10



## BRITISH SEMICONDUCTOR

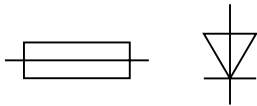
British Semiconductor fuses are typically used for industrial applications to protect semiconductors like diodes, SCR's, etc.

They are available in single and double body units with multiple diameters and fixing centers. The fuses have mounting tabs for bolt mounting.

### Operating Class (IEC269/BS88:4)

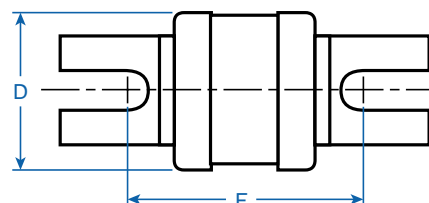
#### aR - Semiconductor Protection

Partial Range, short circuit protection.



**8.4mm (0.33in) (D)**

Ordering Information	Current/ Voltage	Cat. No.	Std. Pk.
<b>38mm (1.50 in.) Fixing Center (F) Fuse</b>	5/240V AC	<b>5B8x38SC-2</b>	10
	10/240V AC	<b>10B8x38SC-2</b>	10
	15/240V AC	<b>15B8x38SC-2</b>	10
	20/240V AC	<b>20B8x38SC-2</b>	10
<b>41mm (1.61 in.) Fixing Center (F) Fuse</b>			
<b>57-62mm (2.24-2.44 in.) Fixing Center (F) Fuse</b>			
<b>62mm (2.44 in.) Fixing Center (F) Fuse</b>			
<b>63.5mm (2.50 in.) Fixing Center (F) Fuse</b>	5/660V AC	<b>5B8x63SC-6</b>	10
	10/660V AC	<b>10B8x63SC-6</b>	10
	15/660V AC	<b>15B8x63SC-6</b>	10
	20/660V AC	<b>20B8x63SC-6</b>	10
<b>80-86mm (3.15-3.39 in.) Fixing Center (F) Fuse</b>			





**17.5mm (0.69in) (D)**



**35mm (1.38in) (D)**



**Double 35mm (1.38in) (D)**

Current/ Voltage	Cat. No.	Std. Pk.	Current/ Voltage	Cat. No.	Std. Pk.	Current/ Voltage	Cat. No.	Std. Pk.
25/240VAC	<b>25B17x41SC-2</b>	10						
50/240VAC	<b>50B17x41SC-2</b>	10						
75/240VAC	<b>75B17x41SC-2</b>	10						
100/240VAC	<b>100B17x41SC-2</b>	10						
125/240VAC	<b>125B17x41SC-2</b>	10						
150/240VAC	<b>150B17x41SC-2</b>	10						
			150/240VAC	<b>150B35x57SC-2</b>	3	300/240VAC	<b>300BD35x57SC-2</b>	1
			200/240VAC	<b>200B35x57SC-2</b>	3	350/240VAC	<b>350BD35x57SC-2</b>	1
			300/240VAC	<b>300B35x57SC-2</b>	3	400/240VAC	<b>400BD35x57SC-2</b>	1
						450/240VAC	<b>450BD35x57SC-2</b>	1
						500/240VAC	<b>500BD35x57SC-2</b>	1
						600/240VAC	<b>600BD35x57SC-2</b>	1
25/660VAC	<b>25B17x62SC-6</b>	10						
50/660VAC	<b>50B17x62SC-6</b>	10						
75/660VAC	<b>75B17x62SC-6</b>	10						
			100/660VAC	<b>100B35x80SC-6</b>	3	300/660VAC	<b>300B35x80SC-6</b>	1
			150/660VAC	<b>150B35x80SC-6</b>	3	400/660VAC	<b>400B35x80SC-6</b>	1
			200/660VAC	<b>200B35x80SC-6</b>	3	450/660VAC	<b>450B35x80SC-6</b>	1
			250/660VAC	<b>250B35x80SC-6</b>	3	500/660VAC	<b>600B35x80SC-6</b>	1

