

# LM2750

## Low Noise, 5.0V Regulated Switched Capacitor Voltage Converter

### General Description

The LM2750 is a switched-capacitor doubler that produces a low-noise, well regulated, 5.0V output. It can supply up to 120mA of output current over a 2.9V to 5.6V input range, as well as up to 40mA of output current when the input voltage is as low as 2.7V. The LM2750 has been placed in National's 10-pin LLP, a package with excellent thermal properties that keeps the part from overheating under almost all rated operating conditions

A perfect fit for space-constrained, battery-powered applications, the LM2750 requires only 3 external components: one input capacitor, one output capacitor, and one flying capacitor. Small, inexpensive ceramic capacitors are recommended for use. These capacitors, in conjunction with the 1.7MHz fixed switching frequency of the LM2750, yield low output voltage ripple, beneficial for systems requiring a low-noise 5V supply. Pre-regulation minimizes input current ripple, reducing input noise to negligible levels.

A tightly controlled soft-start feature limits inrush currents during part activation. Shutdown completely disconnects the load from the input. Output current limiting and thermal shutdown circuitry protect both the LM2750 and connected devices in the event of output shorts or excessive current loads.

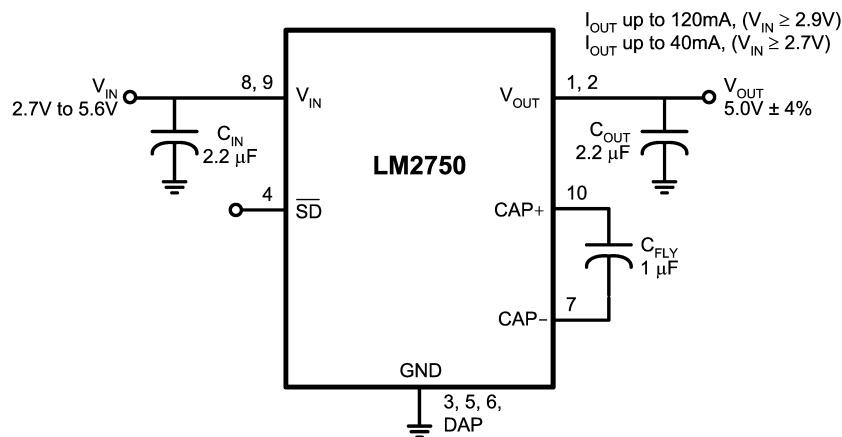
### Features

- Inductorless solution: Application requires only 3 small ceramic capacitors
- Low Noise, 5.0V  $\pm$  4% Regulated Output
- 85% Peak Efficiency  
70% Average Efficiency over Li-Ion Input Range (2.9V-to-4.2V)
- Output Current up to 120mA with  $2.9V \leq V_{IN} \leq 5.6V$   
Output Current up to 40mA with  $2.7V \leq V_{IN} \leq 2.9V$
- Wide Input Voltage Range: 2.7V to 5.6V
- Fixed 1.7MHz switching frequency for a low-noise, low-ripple output signal
- Pre-regulation minimizes input current ripple, keeping the battery line ( $V_{IN}$ ) virtually noise-free
- Tiny LLP package with outstanding power dissipation: Usually no derating required.
- Shutdown Supply Current less than 2 $\mu$ A

### Applications

- White and Colored LED-based Display Lighting
- Cellular Phone SIM cards
- Audio Amplifier Power Supplies
- General Purpose Li-Ion-to-5V Conversion

### Typical Application Circuit

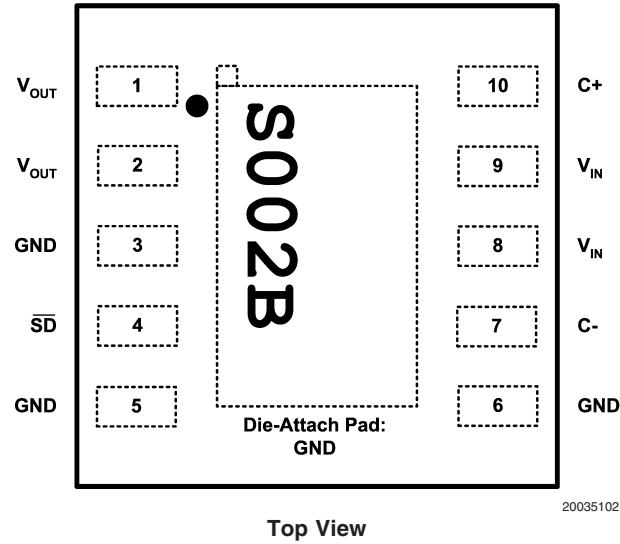


Capacitors: 1.0 $\mu$ F - TDK C1608X5R1A105  
2.2 $\mu$ F - TDK C1608X5R0J225

20035101

## Connection Diagram

LM2750  
10-Pin Leadless Leadframe Package (LLP) - 3mm X 3mm  
NS Package Number LDA10A



## Pin Description

Pin #(s)	Pin Name	Description
8, 9	$V_{IN}$	Input Voltage - The pins must be connected externally.
1, 2	$V_{OUT}$	Output Voltage - These pins must be connected externally.
10	CAP+	Flying Capacitor Positive Terminal
7	CAP-	Flying Capacitor Negative Terminal
4	$\overline{SD}$	Active-Low Shutdown Input. A 200k $\Omega$ resistor is connected internally between this pin and GND to pull the voltage on this pin to 0V, and shut down the part, when the pin is left floating.
3, 5, 6, DAP	GND	Ground - These pins must be connected externally.

## Ordering Information

Output Voltage Option	Ordering Information	Package Marking	Supplied as
5.0	LM2750LD-5.0	S002B	1000 Units, Tape and Reel
5.0	LM2750LDX-5.0	S002B	4500 Units, Tape and Reel

**Absolute Maximum Ratings** (Notes 1,

2)

If Military/Aerospace specified devices are required, please contact the National Semiconductor Sales Office/Distributors for availability and specifications.

$V_{IN}$ Pin: Voltage to Ground	-0.3V to 6V
$\overline{SD}$ Pin: Voltage to GND	-0.3V to $(V_{IN}+0.3V)$
Junction Temperature ( $T_{J-MAX-ABS}$ )	150°C
Continuous Power Dissipation (Note 3)	Internally Limited
Storage Temperature Range	-65°C to 150°C
Maximum Lead Temperature (Soldering, 5 sec.)	260°C
ESD Rating (Note 4)	
Human-body model:	2 kV
Machine model	100V

**Electrical Characteristics** (Notes 2, 7)

Typical values and limits in standard typeface apply for  $T_J = 25^\circ\text{C}$ . Limits in boldface type apply over the operating junction temperature range. Unless otherwise specified:  $2.9V \leq V_{IN} \leq 5.6V$ ,  $V(\overline{SD}) = V_{IN}$ ,  $C_{FLY} = 1\mu\text{F}$ ,  $C_{IN} = 2 \times 1\mu\text{F}$ ,  $C_{OUT} = 2 \times 1\mu\text{F}$  (Note 8).

**Operating Ratings** (Notes 1, 2)

Input Voltage Range	2.7V to 5.6V
Recommended Output Current	
$2.9V \leq V_{IN} \leq 5.6V$	0 to 120mA
$2.7V \leq V_{IN} \leq 2.9V$	0 to 40mA
Junction Temperature ( $T_J$ ) Range	-40°C to 125°C
Ambient Temperature ( $T_A$ ) Range (Note 5)	-40°C to 85°C

**Thermal Information**

Junction-to-Ambient Thermal Resistance, LLP-10	55°C/W
Package ( $\theta_{JA}$ ) (Note 6)	

Symbol	Parameter	Conditions	Min	Typ	Max	Units
$V_{OUT}$	Output Voltage	$2.9V \leq V_{IN} \leq 5.6V$ , $I_{OUT} \leq 120\text{mA}$	<b>4.80</b> <b>(-4%)</b>	5.0	<b>5.20</b> <b>(+4%)</b>	V (%)
		$2.7V \leq V_{IN} \leq 2.9V$ , $I_{OUT} \leq 40\text{mA}$	4.80 <b>(-4%)</b>	5.0	5.20 <b>(+4%)</b>	
$I_Q$	Operating Supply Current	$I_{OUT} = 0\text{mA}$ , $V_{IH(MIN)} \leq V(\overline{SD}) \leq V_{IN}$		5	10 <b>12</b>	mA
$I_{SD}$	Shutdown Supply Current	$V(\overline{SD}) = 0V$			<b>2</b>	$\mu\text{A}$
$V_R$	Output Ripple	$C_{OUT} = 10\mu\text{F}$ , $I_{OUT} = 100\text{mA}$		4		mVp-p
		$C_{OUT} = 2.2\mu\text{F}$ , $I_{OUT} = 100\text{mA}$		15		
$E_{PEAK}$	Peak Efficiency	$V_{IN} = 2.7V$ , $I_{OUT} = 40\text{mA}$		87		%
		$V_{IN} = 2.9V$ , $I_{OUT} = 120\text{mA}$		85		
$E_{AVG}$	Average Efficiency over Li-Ion Input Range (Note 10)	$V_{IN}$ Range: 2.9V - 4.2V, $I_{OUT} = 120\text{mA}$		70		%
		$V_{IN}$ Range: 2.9V - 4.2V, $I_{OUT} = 40\text{mA}$		67		
$f_{SW}$	Switching Frequency		<b>1.0</b>	1.7		MHz
$t_{ON}$	$V_{OUT}$ Turn-On Time	$V_{IN} = 3.0V$ , $I_{OUT} = 100\text{mA}$ , (Note 9)		0.5		ms
$I_{LIM}$	Current Limit	$V_{OUT}$ shorted to GND		300		mA

**Shutdown Pin ( $\overline{SD}$ ) Characteristics**

$V_{IH}$	Logic-High $\overline{SD}$ Input		<b>1.3</b>		$V_{IN}$	V
$V_{IL}$	Logic-Low $\overline{SD}$ Input		<b>0</b>		<b>0.4</b>	V
$I_{IH}$	$\overline{SD}$ Input Current (Note 11)	$1.3V \leq V(\overline{SD}) \leq V_{IN}$		15	<b>50</b>	$\mu\text{A}$
$I_{IL}$	$\overline{SD}$ Input Current	$V(\overline{SD}) = 0V$	<b>-1</b>		<b>1</b>	$\mu\text{A}$

**Capacitor Requirements**

$C_{IN}$	Required Input Capacitance(Note 12)	$I_{OUT} \leq 60\text{mA}$	<b>1.0</b>			$\mu\text{F}$
		$60\text{mA} \leq I_{OUT} \leq 120\text{mA}$	<b>2.0</b>			
$C_{OUT}$	Required Output Capacitance(Note 12)	$I_{OUT} \leq 60\text{mA}$	<b>1.0</b>			$\mu\text{F}$
		$60\text{mA} \leq I_{OUT} \leq 120\text{mA}$	<b>2.0</b>			

## Electrical Characteristics (Notes 2, 7) (Continued)

**Note 1:** Absolute Maximum Ratings indicate limits beyond which damage to the component may occur. Operating Ratings are conditions under which operation of the device is guaranteed. Operating Ratings do not imply guaranteed performance limits. For guaranteed performance limits and associated test conditions, see the Electrical Characteristics tables.

**Note 2:** All voltages are with respect to the potential at the GND pin.

**Note 3:** Thermal shutdown circuitry protects the device from permanent damage.

**Note 4:** The Human body model is a 100 pF capacitor discharged through a 1.5 kΩ resistor into each pin. The machine model is a 200pF capacitor discharged directly into each pin.

**Note 5:** Maximum ambient temperature ( $T_{A-MAX}$ ) is dependent on the maximum operating junction temperature ( $T_{J-MAX-OP} = 125^{\circ}\text{C}$ ), the maximum power dissipation of the device in the application ( $P_{D-MAX}$ ), and the junction-to ambient thermal resistance of the part/package in the application ( $\theta_{JA}$ ), as given by the following equation:  $T_{A-MAX} = T_{J-MAX-OP} - (\theta_{JA} \times P_{D-MAX})$ . Maximum power dissipation of the LM2750 in a given application can be approximated using the following equation:  $P_{D-MAX} = (V_{IN-MAX} \times I_{IN-MAX}) - (V_{OUT} \times I_{OUT-MAX}) = [V_{IN-MAX} \times ((2 \times I_{OUT-MAX}) + 5\text{mA})] - (V_{OUT} \times I_{OUT-MAX})$ . In this equation,  $V_{IN-MAX}$ ,  $I_{IN-MAX}$ , and  $I_{OUT-MAX}$  are the maximum voltage/current of the specific application, and not necessarily the maximum rating of the LM2750.

The maximum ambient temperature rating of  $85^{\circ}\text{C}$  is determined under the following application conditions:  $\theta_{JA} = 55^{\circ}\text{C/W}$ ,  $P_{D-MAX} = 727\text{mW}$  (achieved when  $V_{IN-MAX} = 5.5\text{V}$  and  $I_{OUT-MAX} = 115\text{mA}$ , for example). Maximum ambient temperature must be derated by  $1.1^{\circ}\text{C}$  for every increase in internal power dissipation of  $20\text{mW}$  above  $727\text{mW}$  (again assuming that  $\theta_{JA} = 55^{\circ}\text{C/W}$  in the application). For more information on these topics, please refer to **Application Note 1187: Leadless Leadframe Package (LLP) and the Power Efficiency and Power Dissipation section of this datasheet.**

**Note 6:** Junction-to-ambient thermal resistance ( $\theta_{JA}$ ) is taken from a thermal modeling result, performed under the conditions and guidelines set forth in the JEDEC standard JESD51-7. The test board is a 4 layer FR-4 board measuring  $102\text{mm} \times 76\text{mm} \times 1.6\text{mm}$  with a  $2 \times 1$  array of thermal vias. The ground plane on the board is  $50\text{mm} \times 50\text{mm}$ . Thickness of copper layers are  $36\text{mm}/18\text{mm}/18\text{mm}/36\text{mm}$  (1.5oz/1oz/1oz/1.5oz). Ambient temperature in simulation is  $22^{\circ}\text{C}$ , still air. Power dissipation is  $1\text{W}$ .

The value of  $\theta_{JA}$  of the LM2750 in LLP-10 could fall in a range as wide as  $50^{\circ}\text{C/W}$  to  $150^{\circ}\text{C/W}$  (if not wider), depending on PCB material, layout, and environmental conditions. In applications where high maximum power dissipation exists (high  $V_{IN}$ , high  $I_{OUT}$ ), special care must be paid to thermal dissipation issues. For more information on these topics, please refer to **Application Note 1187: Leadless Leadframe Package (LLP) and the Power Efficiency and Power Dissipation section of this datasheet.** and the following sections of this datasheet:

**Note 7:** All room temperature limits are 100% tested or guaranteed through statistical analysis. All limits at temperature extremes are guaranteed by correlation using standard Statistical Quality Control methods (SQC). All limits are used to calculate Average Outgoing Quality Level (AOQL). Typical numbers are not guaranteed, but do represent the most likely norm.

**Note 8:**  $C_{FLY}$ ,  $C_{IN}$ , and  $C_{OUT}$ : Low-ESR Surface-Mount Ceramic Capacitors (MLCCs) used in setting electrical characteristics

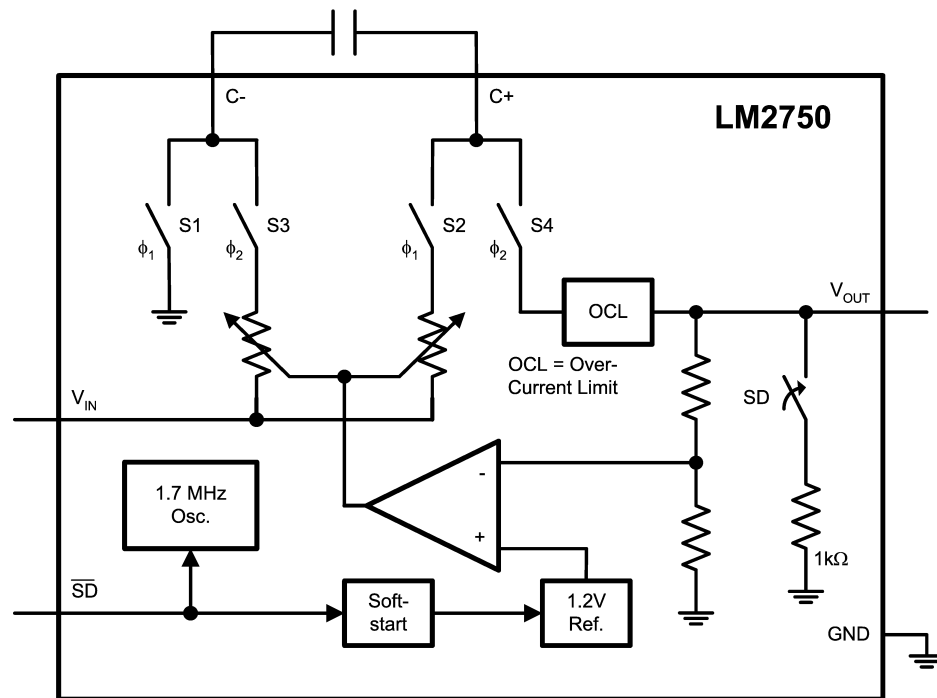
**Note 9:** Turn-on time is measured from when  $\overline{SD}$  signal is pulled high until the output voltage crosses 90% of its final value.

**Note 10:** Efficiency is measured versus  $V_{IN}$ , with  $V_{IN}$  being swept in small increments from  $3.0\text{V}$  to  $4.2\text{V}$ . The average is calculated from these measurements results. Weighting to account for battery voltage discharge characteristics ( $V_{BAT}$  vs. Time) is not done in computing the average.

**Note 11:**  $\overline{SD}$  Input Current ( $I_{IH}$ ) is due to a  $200\text{k}\Omega$  (typ.) pull-down resistor connected internally between the  $\overline{SD}$  pin and GND.

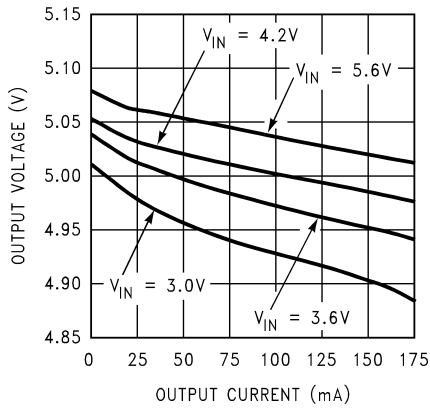
**Note 12:** Limit is the minimum required output capacitance to ensure proper operation. This electrical specification is guaranteed by design.

## Block Diagram



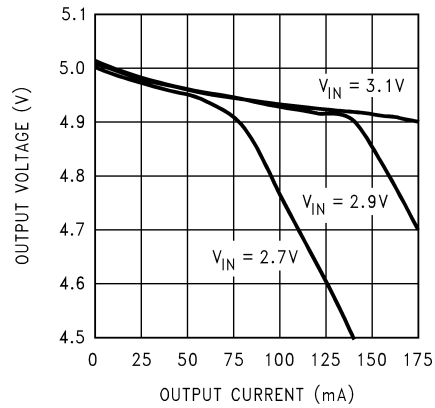
**Typical Performance Characteristics** Unless otherwise specified:  $V_{IN} = 3.6V$ ,  $T_A = 25^\circ C$ ,  $C_{IN} = 2.2\mu F$ ,  $C_{FLY} = 1.0\mu F$ ,  $C_{OUT} = 2.2\mu F$ . Capacitors are low-ESR multi-layer ceramic capacitors (MLCC's).

**Output Voltage vs. Output Current**



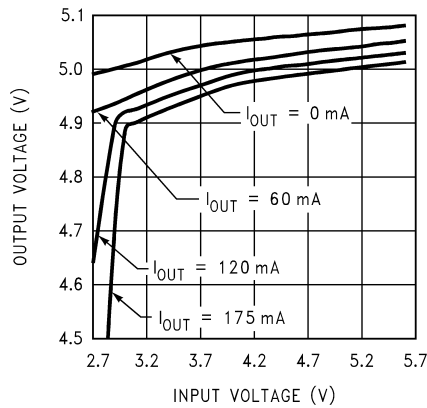
20035115

**Output Voltage vs. Output Current**



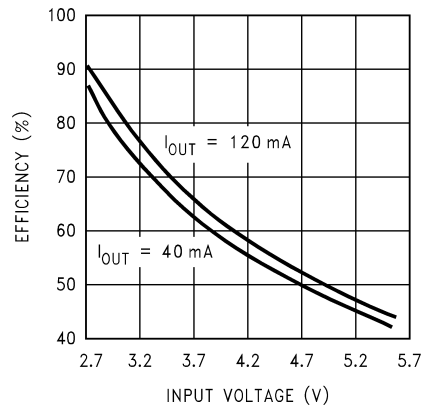
20035116

**Output Voltage vs. Input Voltage**



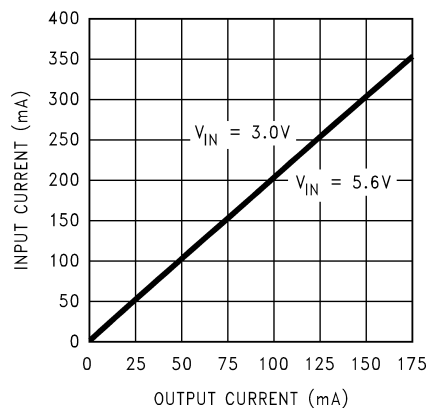
20035117

**Power Efficiency**



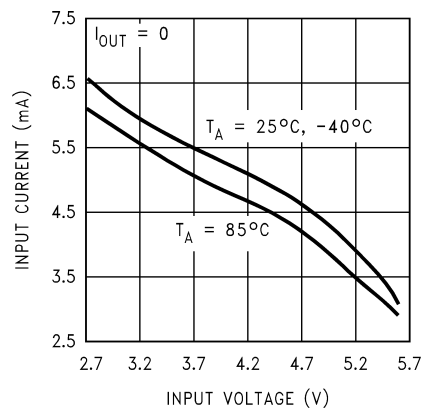
20035118

**Input Current vs. Output Current**



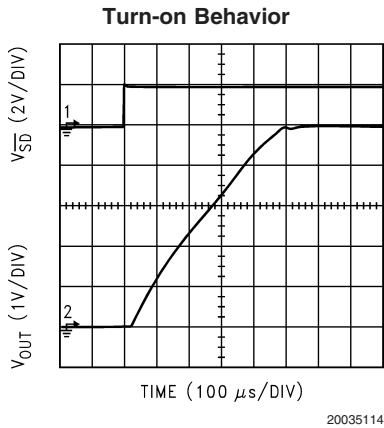
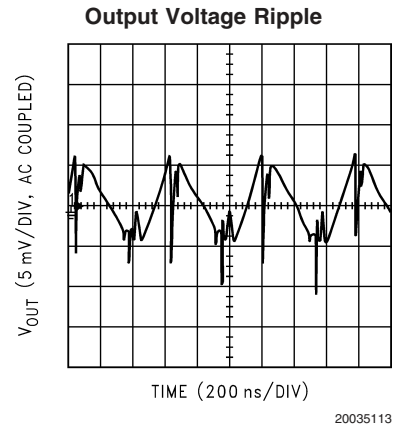
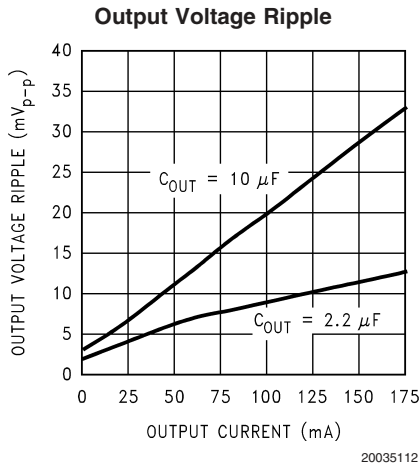
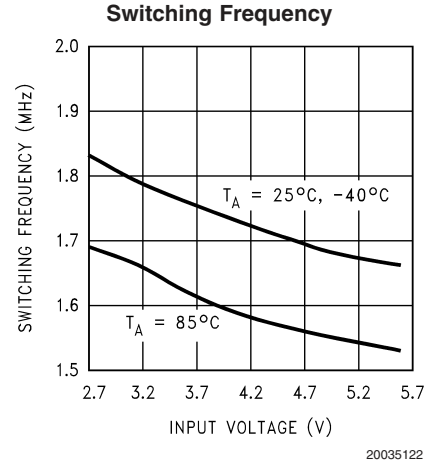
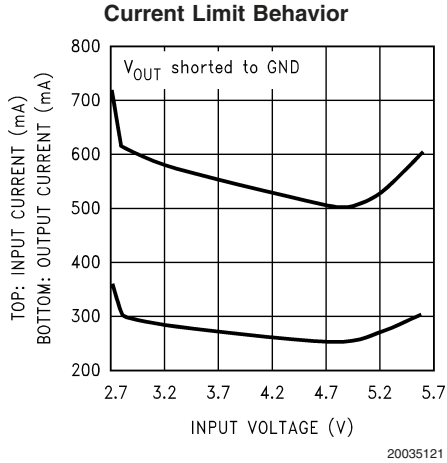
20035119

**Quiescent Supply Current**



20035120

**Typical Performance Characteristics** Unless otherwise specified:  $V_{IN} = 3.6V$ ,  $T_A = 25^\circ C$ ,  $C_{IN} = 2.2\mu F$ ,  $C_{FLY} = 1.0\mu F$ ,  $C_{OUT} = 2.2\mu F$ . Capacitors are low-ESR multi-layer ceramic capacitors (MLCC's). (Continued)



## Operation Description

### OVERVIEW

The LM2750 is a regulated switched capacitor doubler that, by combining the principles of a switched-capacitor voltage doubler and a linear regulator, generates a regulated 5V output from an extended Li-Ion input voltage range. A two-phase non-overlapping clock generated internally controls the operation of the doubler. During the charge phase ( $\phi 1$ ), the flying capacitor ( $C_{FLY}$ ) is connected between the input and ground through internal pass-transistor switches and is charged to the input voltage. In the pump phase that follows ( $\phi 2$ ), the flying capacitor is connected between the input and output through similar switches. Stacked atop the input, the charge of the flying capacitor boosts the output voltage and supplies the load current.

A traditional switched capacitor doubler operating in this manner will use switches with very low on-resistance, ideally  $0\Omega$ , to generate an output voltage that is 2x the input voltage. The LM2750 regulates the output voltage by controlling the resistance of the two input-connected pass-transistor switches in the doubler.

### PRE-REGULATION

The very low input current ripple of the LM2750, resulting from internal pre-regulation, adds very little noise to the input line. The core of the LM2750 is very similar to that of a basic switched capacitor doubler: it is composed of four switches and a flying capacitor (external). Regulation is achieved by modulating the on-resistance of the two switches connected to the input pin (one switch in each phase). The regulation is done before the voltage doubling, giving rise to the term "pre-regulation". It is pre-regulation that eliminates most of the input current ripple that is a typical and undesirable characteristic of a many switched capacitor converters.

### INPUT, OUTPUT, AND GROUND CONNECTIONS

Making good input, output, and ground connections is essential to achieve optimal LM2750 performance. The two input pads, pads 8 and 9, must be connected externally. It is strongly recommended that the input capacitor ( $C_{IN}$ ) be placed as close as possible to the LM2750, so that the traces from the input pads are as short and straight as possible. To minimize the effect of input noise on LM2750 performance, it is best to bring two traces out from the LM2750 all the way to the input capacitor pad, so that they are connected at the capacitor pad. Connecting the two input traces between the input capacitor and the LM2750 input pads could make the LM2750 more susceptible to noise-related performance degradation. It is also recommended that the input capacitor be on the same side of the PCB as the LM2750, and that traces remain on this side of the board as well (vias to traces on other PCB layers are not recommended between the input capacitor and LM2750 input pads).

The two output pads, pads 1 and 2, must also be connected externally. It is recommended that the output capacitor ( $C_{OUT}$ ) be placed as close to the LM2750 output pads as possible. It is best if routing of output pad traces follow guidelines similar to those presented for the input pads and capacitor. The flying capacitor ( $C_{FLY}$ ) should also be placed as close to the LM2750 as possible to minimize PCB trace length between the capacitor and the IC. Due to the pad-layout of the part, it is likely that the trace from one of the flying capacitor pads ( $C+$  or  $C-$ ) will need to be routed to an internal or opposite-side layer using vias. This is acceptable,

and it is much more advantageous to route a flying capacitor trace in this fashion than it is to place input traces on other layers.

The following pads of the LM2750 are ground connections and must be connected externally: pads 3, 5, 6 and the die-attach pad (DAP). Large, low impedance copper fills and via connections to an internal ground plane are the preferred way of connecting together the ground pads of the LM2750, the input capacitor, and the output capacitor, as well as connecting this circuit ground to the system ground of the PCB.

### SHUTDOWN

When the voltage on the active-low-logic shutdown pin is low, the LM2750 will be in shutdown mode. In shutdown, the LM2750 draws virtually no supply current. There is a 200k $\Omega$  pull-down resistor tied between the  $\overline{SD}$  pin and GND that pulls the  $\overline{SD}$  pin voltage low if the pin is not driven by a voltage source. When pulling the part out of shutdown, the voltage source connected to the  $\overline{SD}$  pin must be able to drive the current required by the 200k $\Omega$  resistor. For voltage management purposes required upon startup, internal switches connect the output of the LM2750 to an internal pull-down resistor (1k $\Omega$  typ) when the part is shutdown. Driving the output of the LM2750 by another supply when the LM2750 is shutdown is not recommended, as the pull-down resistor was not sized to sink continuous current.

### SOFT START

The LM2750 employs soft start circuitry to prevent excessive input inrush currents during startup. The output voltage is programmed to rise from 0V to the nominal output voltage (5.0V) in 500 $\mu$ s (typ.). Soft-start is engaged when a part, with input voltage established, is taken out of shutdown mode by pulling the  $\overline{SD}$  pin voltage high. Soft-start will also engage when voltage is established simultaneously to the input and  $\overline{SD}$  pins.

### OUTPUT CURRENT CAPABILITY

The LM2750 is guaranteed to provide 120mA of output current when the input voltage is within 2.9V-to-5.6V. Using the LM2750 to drive loads in excess of 120mA is possible. **IMPORTANT NOTE:** Understanding relevant application issues is recommended and a thorough analysis of the application circuit should be performed when using the part outside operating ratings and/or specifications to ensure satisfactory circuit performance in the application. Special care should be paid to power dissipation and thermal effects. These parameters can have a dramatic impact on high-current applications, especially when the input voltage is high. (see "Power Efficiency and Power Dissipation" section, to come).

The schematic of *Figure 1* is a simplified model of the LM2750 that is useful for evaluating output current capability. The model shows a linear pre-regulation block (Reg), a voltage doubler (2x), and an output resistance ( $R_{OUT}$ ). Output resistance models the output voltage droop that is inherent to switched capacitor converters. The output resistance of the LM2750 is 5 $\Omega$  (typ.), and is approximately equal to twice the resistance of the four LM2750 switches. When the output voltage is in regulation, the regulator in the model controls the voltage  $V'$  to keep the output voltage equal to  $5.0V \pm 4\%$ . With increased output current, the voltage drop across  $R_{OUT}$  increases. To prevent droop in output voltage, the voltage drop across the regulator is reduced,  $V'$  increases, and  $V_{OUT}$  remains at 5V. When the output current

## Operation Description (Continued)

increases to the point that there is zero voltage drop across the regulator,  $V'$  equals the input voltage, and the output voltage is "on the edge" of regulation. Additional output current causes the output voltage to fall out of regulation, and the LM2750 operation is similar to a basic open-loop doubler. As in a voltage doubler, increase in output current results in output voltage drop proportional to the output resistance of the doubler. The out-of-regulation LM2750 output voltage can be approximated by:

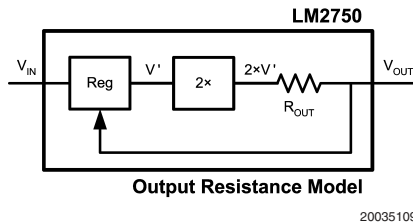


FIGURE 1. LM2750 Output Resistance Model

$$V_{OUT} = 2xV_{IN} - I_{OUT} \times R_{OUT}$$

Again, this equation only applies at low input voltage and high output current where the LM2750 is not regulating. See *Output Current vs. Output Voltage* curves in the **Typical Performance Characteristics** section for more details.

A more complete calculation of output resistance takes into account the effects of switching frequency, flying capacitance, and capacitor equivalent series resistance (ESR). This equation is shown below:

$$R_{OUT} = 2 \cdot R_{SW} + \frac{1}{F_{SW} \times C_{FLY}} + 4 \cdot ESR_{CFLY} + 2 \cdot ESR_{COUT}$$

Switch resistance ( $5\Omega$  typ.) dominates the output resistance equation of the LM2750. With a 1.7MHz typical switching frequency, the  $1/(F \times C)$  component of the output resistance contributes only  $0.6\Omega$  to the total output resistance. Increasing the flying capacitance will only provide minimal improvement to the total output current capability of the LM2750. In some applications it may be desirable to reduce the value of the flying capacitor below  $1\mu F$  to reduce solution size and/or cost, but this should be done with care so that output resistance does not increase to the point that undesired output voltage droop results. If ceramic capacitors are used, ESR will be a negligible factor in the total output resistance, as the ESR of quality ceramic capacitors is typically much less than  $100m\Omega$ .

### THERMAL SHUTDOWN

The LM2750 implements a thermal shutdown mechanism to protect the device from damage due to overheating. When the junction temperature rises to  $150^\circ C$  (typ.), the part switches into shutdown mode. The LM2750 releases thermal shutdown when the junction temperature of the part is reduced to  $130^\circ C$  (typ.).

Thermal shutdown is most often triggered by self-heating, which occurs when there is excessive power dissipation in the device and/or insufficient thermal dissipation. LM2750 power dissipation increases with increased output current and input voltage (see **Power Efficiency and Power Dissipation** section). When self-heating brings on thermal shutdown, thermal cycling is the typical result. Thermal cycling is

the repeating process where the part self-heats, enters thermal shutdown (where internal power dissipation is practically zero), cools, turns-on, and then heats up again to the thermal shutdown threshold. Thermal cycling is recognized by a pulsing output voltage and can be stopped by reducing the internal power dissipation (reduce input voltage and/or output current) or the ambient temperature. If thermal cycling occurs under desired operating conditions, thermal dissipation performance must be improved to accommodate the power dissipation of the LM2750. Fortunately, the LLP package has excellent thermal properties that, when soldered to a PCB designed to aid thermal dissipation, allows the LM2750 to operate under very demanding power dissipation conditions.

### OUTPUT CURRENT LIMITING

The LM2750 contains current limit circuitry that protects the device in the event of excessive output current and/or output shorts to ground. Current is limited to 300mA (typ.) when the output is shorted directly to ground. When the LM2750 is current limiting, power dissipation in the device is likely to be quite high. In this event, thermal cycling should be expected (see **Thermal Shutdown** section).

## Application Information

### OUTPUT VOLTAGE RIPPLE

The amount of voltage ripple on the output of the LM2750 is highly dependent on the application conditions: output current and the output capacitor, specifically. A simple approximation of output ripple is determined by calculating the amount of voltage droop that occurs when the output of the LM2750 is not being driven. This occurs during the charge phase ( $\phi 1$ ). During this time, the load is driven solely by the charge on the output capacitor. The magnitude of the ripple thus follows the basic discharge equation for a capacitor ( $I = C \times dV/dt$ ), where discharge time is one-half the switching period, or  $0.5/F_{SW}$ . Put simply,

$$RIPPLE_{Peak-Peak} = \frac{I_{OUT}}{C_{OUT}} \times \frac{0.5}{F_{SW}}$$

A more thorough and accurate examination of factors that affect ripple requires including effects of phase non-overlap times and output capacitor equivalent series resistance (ESR). In order for the LM2750 to operate properly, the two phases of operation must never coincide. (If this were to happen all switches would be closed simultaneously, shorting input, output, and ground). Thus, non-overlap time is built into the clocks that control the phases. Since the output is not being driven during the non-overlap time, this time should be accounted for in calculating ripple. Actual output capacitor discharge time is approximately 60% of a switching period, or  $0.6/F_{SW}$ .

The ESR of the output capacitor also contributes to the output voltage ripple, as there is effectively an AC voltage drop across the ESR due to current switching in and out of the capacitor. The following equation is a more complete calculation of output ripple than presented previously, taking into account phase non-overlap time and capacitor ESR.

$$RIPPLE_{Peak-Peak} = \left( \frac{I_{OUT}}{C_{OUT}} \times \frac{0.6}{F_{SW}} \right) + (2 \times I_{OUT} \times ESR_{COUT})$$



## Application Information (Continued)

A low-ESR ceramic capacitor is recommended on the output to keep output voltage ripple low. Placing multiple capacitors in parallel can reduce ripple significantly, both by increasing capacitance and reducing ESR. When capacitors are in parallel, ESR is in parallel as well. The effective net ESR is determined according to the properties of parallel resistance. Two identical capacitors in parallel have twice the capacitance and half the ESR as compared to a single capacitor of the same make. On a similar note, if a large-value, high-ESR capacitor (tantalum, for example) is to be used as the primary output capacitor, the net output ESR can be significantly reduced by placing a low-ESR ceramic capacitor in parallel with this primary output capacitor.

### CAPACITORS

The LM2750 requires 3 external capacitors for proper operation. Surface-mount multi-layer ceramic capacitors are recommended. These capacitors are small, inexpensive and have very low equivalent series resistance ( $\leq 10\text{m}\Omega$  typ.). Tantalum capacitors, OS-CON capacitors, and aluminum electrolytic capacitors generally are not recommended for use with the LM2750 due to their high ESR, as compared to ceramic capacitors.

For most applications, ceramic capacitors with X7R or X5R temperature characteristic are preferred for use with the LM2750. These capacitors have tight capacitance tolerance (as good as  $\pm 10\%$ ), hold their value over temperature (X7R:  $\pm 15\%$  over  $-55^\circ\text{C}$  to  $125^\circ\text{C}$ ; X5R:  $\pm 15\%$  over  $-55^\circ\text{C}$  to  $85^\circ\text{C}$ ), and typically have little voltage coefficient. Capacitors with Y5V and/or Z5U temperature characteristic are generally not recommended. These types of capacitors typically have wide capacitance tolerance ( $+80\%$ ,  $-20\%$ ), vary significantly over temperature (Y5V:  $+22\%$ ,  $-82\%$  over  $-30^\circ\text{C}$  to  $+85^\circ\text{C}$  range; Z5U:  $+22\%$ ,  $-56\%$  over  $+10^\circ\text{C}$  to  $+85^\circ\text{C}$  range), and have poor voltage coefficients. Under some conditions, a nominal  $1\mu\text{F}$  Y5V or Z5U capacitor could have a capacitance of only  $0.1\mu\text{F}$ . Such detrimental deviation is likely to cause these Y5V and Z5U of capacitors to fail to meet the minimum capacitance requirements of the LM2750.

The table below lists some leading ceramic capacitor manufacturers.

Manufacturer	Contact Information
TDK	www.component.tdk.com
AVX	www.avx.com
Murata	www.murata.com
Taiyo-Yuden	www.t-yuden.com
Vishay-Vitramon	www.vishay.com

### INPUT CAPACITORS

The input capacitor ( $C_{IN}$ ) is used as a reservoir of charge, helping to quickly transfer charge to the flying capacitor during the charge phase ( $\phi_1$ ) of operation. The input capacitor helps to keep the input voltage from drooping at the start of the charge phase, when the flying capacitor is first connected to the input, and helps to filter noise on the input pin that could adversely affect sensitive internal analog circuitry biased off the input line. As mentioned above, an X7R/X5R ceramic capacitor is recommended for use. For applications where the maximum load current required is between 60mA and 120mA, a minimum input capacitance of  $2.0\mu\text{F}$  is required. For applications where the maximum load current is 60mA or less,  $1.0\mu\text{F}$  of input capacitance is sufficient. Failure

to provide enough capacitance on the LM2750 input can result in poor part performance, often consisting of output voltage droop, excessive output voltage ripple and/or excessive input voltage ripple.

### FLYING CAPACITOR

The flying capacitor ( $C_{FLY}$ ) transfers charge from the input to the output, providing the voltage boost of the doubler. A polarized capacitor (tantalum, aluminum electrolytic, etc.) must not be used here, as the capacitor will be reverse-biased upon start-up of the LM2750. The size of the flying capacitor and its ESR affect output current capability when the input voltage of the LM2750 is low, most notable for input voltages below 3.0V. These issues were discussed previously in the **Output Current Capability** section. For most applications, a  $1\mu\text{F}$  X7R/X5R ceramic capacitor is recommended for the flying capacitor.

### OUTPUT CAPACITOR

The output capacitor of the LM2750 plays an important part in determining the characteristics of the output signal of the LM2750, many of which have already been discussed. The ESR of the output capacitor affects charge pump output resistance, which plays a role in determining output current capability. Both output capacitance and ESR affect output voltage ripple. For these reasons, a low-ESR X7R/X5R ceramic capacitor is the capacitor of choice for the LM2750 output.

In addition to these issues previously discussed, the output capacitor of the LM2750 also affects control-loop stability of the part. Instability typically results in the switching frequency effectively reducing by a factor of two, giving excessive output voltage droop and/or increased voltage ripple on the output and the input. With output currents of 60mA or less, a minimum capacitance of  $1.0\mu\text{F}$  is required at the output to ensure stability. For output currents between 60mA and 120mA, a minimum output capacitance of  $2.0\mu\text{F}$  is required.

### POWER EFFICIENCY AND POWER DISSIPATION

Efficiency of the LM2750 mirrors that of an unregulated switched capacitor converter followed by a linear regulator. The simplified power model of the LM2750, in *Figure 2*, will be used to discuss power efficiency and power dissipation. In calculating power efficiency, output power ( $P_{OUT}$ ) is easily determined as the product of the output current and the 5.0V output voltage. Like output current, input voltage is an application-dependent variable. The input current can be calculated using the principles of linear regulation and switched capacitor conversion. In an ideal linear regulator, the current into the circuit is equal to the current out of the circuit. The principles of power conservation mandate the ideal input current of a voltage doubler must be twice the output current. Adding a correction factor for operating quiescent current ( $I_Q$ , 5mA typ.) gives an approximation for total input current which, when combined with the other input and output parameter(s), yields the following equation for efficiency:

$$E = \frac{P_{OUT}}{P_{IN}} = \frac{V_{OUT} \times I_{OUT}}{V_{IN} \times (2 \cdot I_{OUT} + I_Q)}$$

Comparisons of LM2750 efficiency measurements to calculations using the above equation have shown the equation to be a quite accurate approximation of actual efficiency. Be-

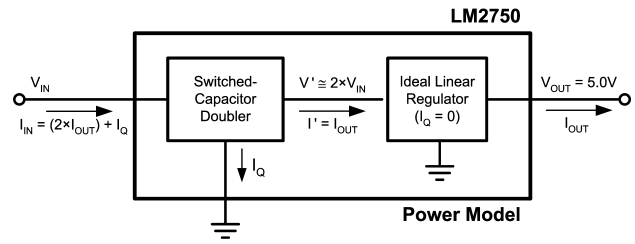
## Application Information (Continued)

cause efficiency is inversely proportional to input voltage, it is highest when the input voltage is low. In fact, for an input voltage of 2.9V, efficiency of the LM2750 is greater than 80% ( $I_{OUT} \geq 40\text{mA}$ ) and peak efficiency is 85% ( $I_{OUT} = 120\text{mA}$ ). The average efficiency for an input voltage range spanning the Li-Ion range (2.9V-to-4.2V) is 70% ( $I_{OUT} = 120\text{mA}$ ). At higher input voltages, efficiency drops dramatically. In Li-Ion-powered applications, this is typically not a major concern, as the circuit will be powered off a charger in these circumstances. Low efficiency equates to high power dissipation, however, which could become an issue worthy of attention. LM2750 power dissipation ( $P_D$ ) is calculated simply by subtracting output power from input power:

$$P_D = P_{IN} - P_{OUT} = [V_{IN} \times (2 \cdot I_{OUT} + I_Q)] - [V_{OUT} \times I_{OUT}]$$

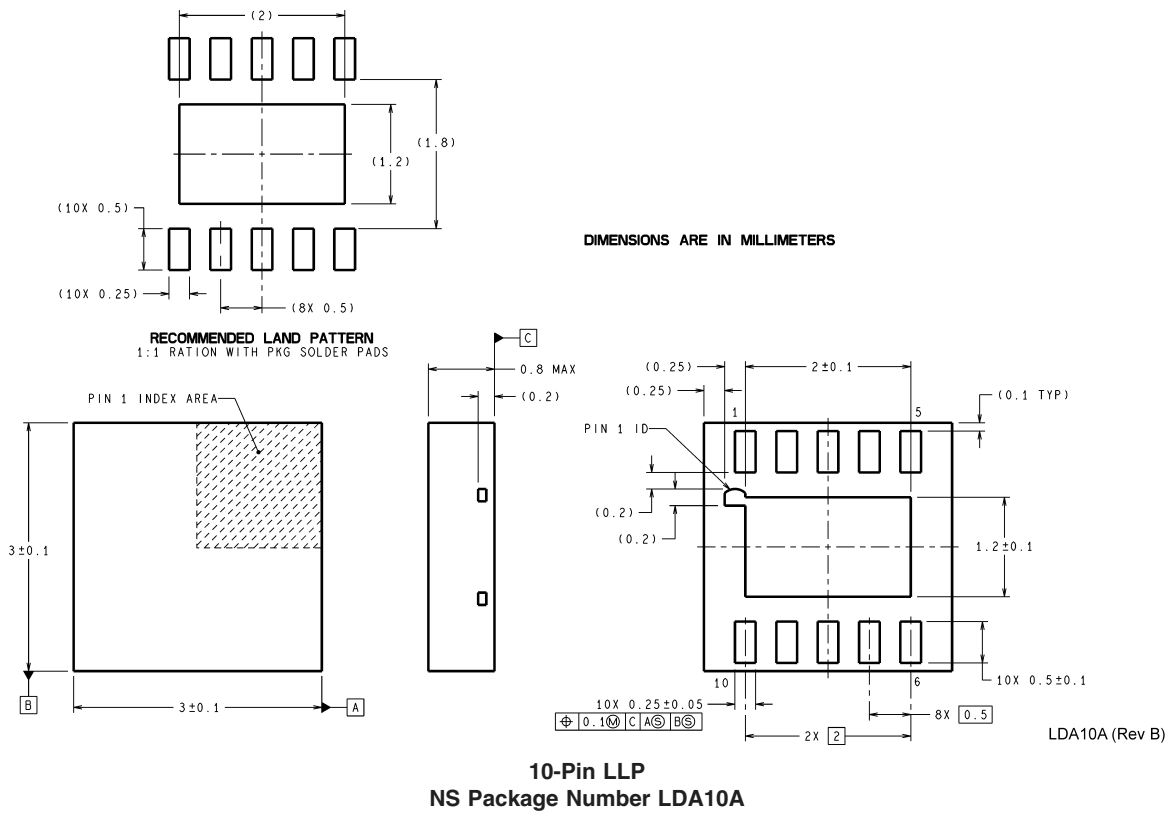
Power dissipation increases with increased input voltage and output current, up to 772mW at the ends of the operating ratings ( $V_{IN} = 5.6\text{V}$ ,  $I_{OUT} = 120\text{mA}$ ). Internal power dissipation self-heats the device. Dissipating this amount power/heat so the LM2750 does not overheat is a demanding thermal requirement for a small surface-mount package.

When soldered to a PCB with layout conducive to power dissipation, the excellent thermal properties of the LLP package enable this power to be dissipated from the LM2750 with little or no derating, even when the circuit is placed in elevated ambient temperatures (see **Optimizing Layout for Thermal Dissipation** section).



**FIGURE 2. LM2750 Model for Power Efficiency and Power Dissipation Calculations**

**Physical Dimensions** inches (millimeters) unless otherwise noted



**LIFE SUPPORT POLICY**

NATIONAL'S PRODUCTS ARE NOT AUTHORIZED FOR USE AS CRITICAL COMPONENTS IN LIFE SUPPORT DEVICES OR SYSTEMS WITHOUT THE EXPRESS WRITTEN APPROVAL OF THE PRESIDENT AND GENERAL COUNSEL OF NATIONAL SEMICONDUCTOR CORPORATION. As used herein:

1. Life support devices or systems are devices or systems which, (a) are intended for surgical implant into the body, or (b) support or sustain life, and whose failure to perform when properly used in accordance with instructions for use provided in the labeling, can be reasonably expected to result in a significant injury to the user.
2. A critical component is any component of a life support device or system whose failure to perform can be reasonably expected to cause the failure of the life support device or system, or to affect its safety or effectiveness.



**National Semiconductor**  
Americas Customer  
Support Center  
Email: new.feedback@nsc.com  
Tel: 1-800-272-9959

www.national.com

**National Semiconductor**  
Europe Customer Support Center  
Fax: +49 (0) 180-530 85 86  
Email: europe.support@nsc.com  
Deutsch Tel: +49 (0) 69 9508 6208  
English Tel: +44 (0) 870 24 0 2171  
Français Tel: +33 (0) 1 41 91 8790

**National Semiconductor**  
Asia Pacific Customer  
Support Center  
Fax: 65-6250 4466  
Email: ap.support@nsc.com  
Tel: 65-6254 4466

**National Semiconductor**  
Japan Customer Support Center  
Fax: 81-3-5639-7507  
Email: nsj.crc@jksmtp.nsc.com  
Tel: 81-3-5639-7560