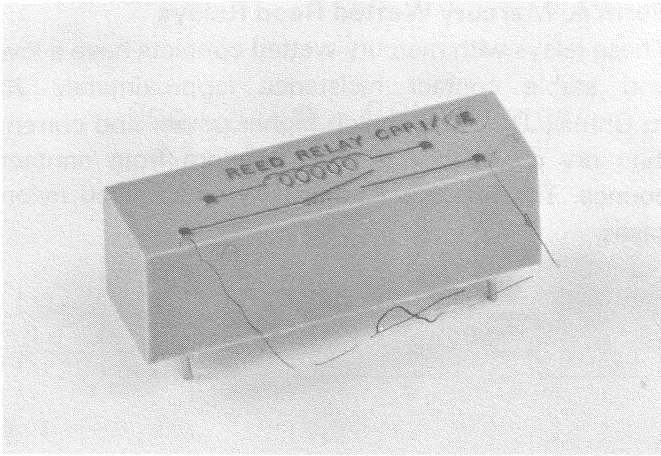


103-592

**CPR (GREY RANGE)****Form A, Dry Reed Relays**

These relays are of identical construction to the coloured range shown on page 8, but feature reed switches of a higher grade providing both greater switching power and longer life.

**Contact Data**

Switching Power max.	10W	Breakdown Voltage min.	250Vdc
Switching Current max.	0.5A	Contact Capacitance max.	2.0pF
Switching Voltage max.	<u>200Vdc</u>	Initial Contact Resistance max.	150 m Ohms

Life Dry Switching  $1 \times 10^9$  operations. Switching 100mA at 50V —  $1 \times 10^8$  operations

**Additional Data**

Operate Time max.	1.0 m Secs
Release Time max.	0.5 m Secs
Insulation Resistance	Coil to Contact min. $1 \times 10^{10}$ Ohms
Insulation Resistance	Contact to Contact min. $1 \times 10^{10}$ Ohms
Dielectric Strength	Coil to Contact min. 2000V
Dielectric Strength	Contact to Contact min. 500V
Climatic	Epoxy filled for operation over the temperature range 0°C to 70°C at the rated voltages

**Coil Data**

Type	Body Colour	Coil Volts	Coil Power (mW)	Coil Resistance ( $\pm 10\%$ )	Maximum must operate voltage	Minimum must release voltage
CPR1/E	Grey	18 to 30	110 to 300	3.0k $\Omega$	14	3.5
CPR1/F	Grey	12 to 18	85 to 190	1.7k $\Omega$	10	2.0
CPR1/G	Grey	9 to 12	80 to 145	1.0k $\Omega$	7	1.5
CPR1/H	Grey	6 to 9	50 to 115	700 $\Omega$	4.7	1.0
CPR1/J ★X	Black	5	25 <i>SMA</i>	1k $\Omega$	3.7	0.5
CPR2/E	Grey	18 to 30	220 to 600	1.5k $\Omega$	14	3.5
CPR2/F	Grey	12 to 18	144 to 325	1k $\Omega$	10	2.0
CPR2/G	Grey	9 to 12	230 to 410	350 $\Omega$	7	1.5
CPR2/H	Grey	6 to 9	144 to 325	250 $\Omega$	4.7	1.0
CPR3/E	Grey	18 to 30	295 to 820	1.1k $\Omega$	14	3.5
CPR3/F	Grey	12 to 18	240 to 540	600 $\Omega$	10	2.0
CPR3/G	Grey	9 to 12	325 to 575	250 $\Omega$	7	1.5
CPR3/H	Grey	6 to 9	240 to 540	150 $\Omega$	4.7	1.0
CPR4/E	Grey	18 to 30	360 to 1000	900 $\Omega$	14	3.5
CPR4/F	Grey	12 to 18	410 to 925	350 $\Omega$	10	2.0
CPR4/G	Grey	9 to 12	325 to 575	250 $\Omega$	7	1.5
CPR4/H	Grey	6 to 9	240 to 540	150 $\Omega$	4.7	1.0

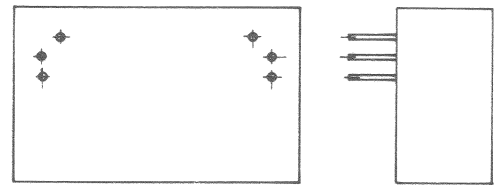
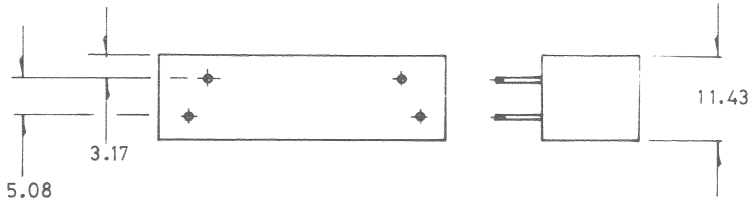
Slide on shields (magnetic screens) are available for all types in the CPR range, add suffix "M" to type number, e.g. CPR1/F/M.

★ For 5V logic circuit applications.

# DIMENSIONS AND BASE CONNECTIONS

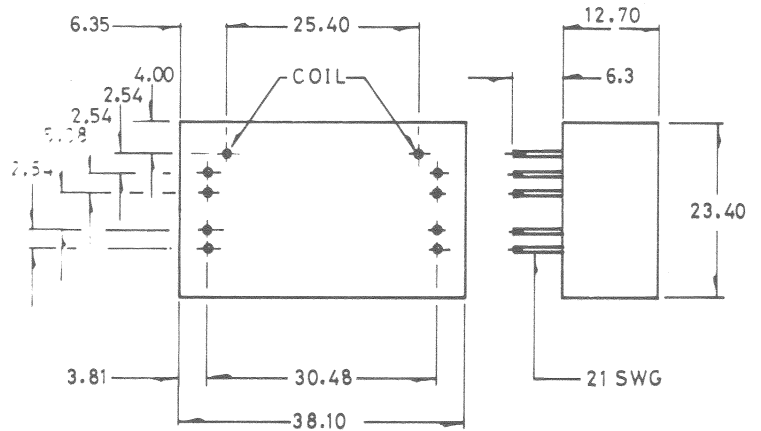
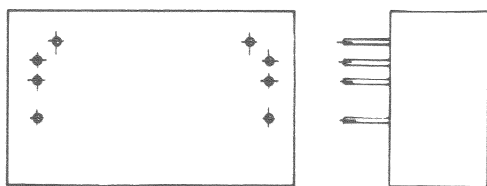
One Contact - CPR1 Range

Two Contacts - CPR2 Range

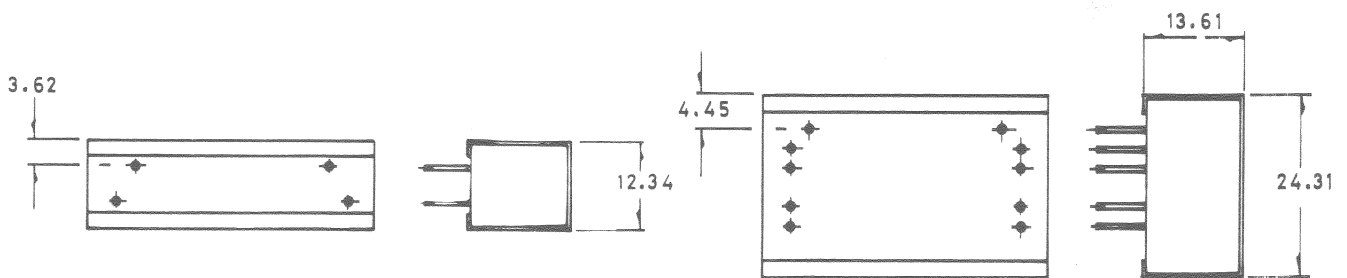


Three Contacts - CPR4 Range

Four Contacts - CPR4 Range



**ALL ABOVE DIMENSIONS AS CPR4 RANGE EXCEPT WHERE SHOWN**



**ABOVE DIMENSIONS OF MAGNETICALLY SCREENED RELAYS SUFFIX M**

Mercury Wetted Form A

