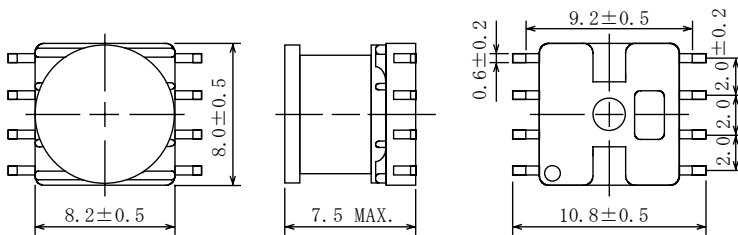
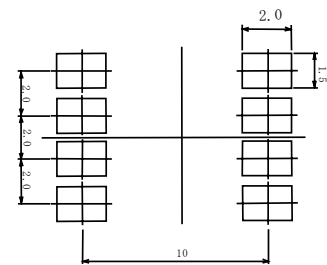


Type: CMD-8N
◆ Product Description

- 8.7×8.5mm Max.(L×W), 7.5mm Max. Height.
- Inductance range: 22 μ H~1.0mH
- Rated current range: 0.28A~2.0A.
- 8 Terminal pins' type gives a flexible design as inductors or transformers.
- Custom design is available.


◆ Feature

- Magnetically unshielded construction.
- Max. Operating frequency 500kHz, Max Operating Power 2.7W (500kHz)
- Ideally used in DSC/DVC,PDA, Power supply module etc as DC-DC Converter transformers or power chokes.
- RoHS Compliance

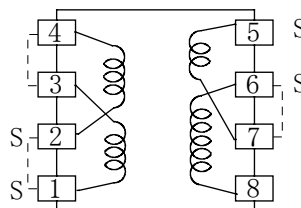
◆ Dimensions (mm)

◆ Land Pattern (mm)

◆ Specification (for transformers)

| Sample No. | Inductance (1,2-3,4) 1kHz/1V | Inductance (5-7) 1kHz/1V | Rated Current (1,2-3,4) | Rated Current (5-7) |
|------------|---------------------------------|-----------------------------|----------------------------|------------------------|
| 6310-T036 | 76μH ± 20% | 1.6μH±20% | 0.7 A | 1.0 A |

※ Rated current: The D.C. current at which the inductance decreases to 75% of it's initial value or when Δt=40°C, whichever is lower(Ta=20°C).

※ Schematics (Bottom)

“S” is winding start.

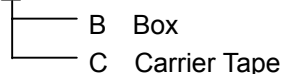


Type: CMD-8N
◆ Specification (for inductors)

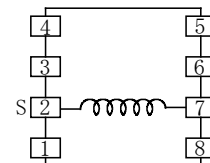
| Part Name ※ | Stamp | Inductance [Within] ※1 | D.C.R.(Ω) [Max.] (at 20°C) | Rate Current (A)※2 | S.R.F. (MHz) [Min.] |
|----------------|-------|------------------------------|----------------------------------|-----------------------|---------------------------|
| CMD8NNP-220K□ | 220K | 22 μH ± 10% | 0.15 | 2.0 | 15.2 |
| CMD8NNP-270K□ | 270K | 27 μH ± 10% | 0.18 | 1.8 | 14.9 |
| CMD8NNP-330K□ | 330K | 33 μH ± 10% | 0.20 | 1.6 | 13.5 |
| CMD8NNP-390K□ | 390K | 39 μH ± 10% | 0.22 | 1.5 | 12.1 |
| CMD8NNP-470K□ | 470K | 47 μH ± 10% | 0.24 | 1.3 | 10.8 |
| CMD8NNP-560K□ | 560K | 56 μH ± 10% | 0.27 | 1.2 | 10.6 |
| CMD8NNP-680K□ | 680K | 68 μH ± 10% | 0.30 | 1.1 | 9.8 |
| CMD8NNP-820K□ | 820K | 82 μH ± 10% | 0.34 | 1.0 | 8.2 |
| CMD8NNP-101K□ | 101K | 100 μH ± 10% | 0.39 | 0.90 | 7.6 |
| CMD8NNP-121K□ | 121K | 120 μH ± 10% | 0.43 | 0.85 | 6.8 |
| CMD8NNP-151K□ | 151K | 150 μH ± 10% | 0.50 | 0.80 | 6.5 |
| CMD8NNP-181K□ | 181K | 180 μH ± 10% | 0.56 | 0.75 | 5.7 |
| CMD8NNP-221K□ | 221K | 220 μH ± 10% | 0.78 | 0.70 | 5.6 |
| CMD8NNP-271K□ | 271K | 270 μH ± 10% | 0.90 | 0.60 | 4.8 |
| CMD8NNP-331K□ | 331K | 330 μH ± 10% | 1.02 | 0.55 | 4.4 |
| CMD8NNP-391K□ | 391K | 390 μH ± 10% | 1.32 | 0.50 | 3.7 |
| CMD8NNP-471K□ | 471K | 470 μH ± 10% | 1.53 | 0.45 | 3.4 |
| CMD8NNP-561K□ | 561K | 560 μH ± 10% | 1.75 | 0.40 | 3.2 |
| CMD8NNP-681K□ | 681K | 680 μH ± 10% | 2.28 | 0.35 | 3.0 |
| CMD8NNP-821K□ | 821K | 820 μH ± 10% | 2.95 | 0.30 | 2.6 |
| CMD8NNP-102K□ | 102K | 1.0mH ± 10% | 3.47 | 0.28 | 2.4 |

※ Description of part name

CMD8NNP-220K□


※ Schematics (Bottom)

“S” is winding start.


※1: Measuring Frequency

22 μH ~ 82 μH at 2.52MHz
 100 μH ~ 1.0mH at 1kHz

※2. Rated current: The D.C. current at which the inductance decreases to 90% of its initial value or when Δt=40°C, whichever is lower(Ta=20°C).