

SP3T

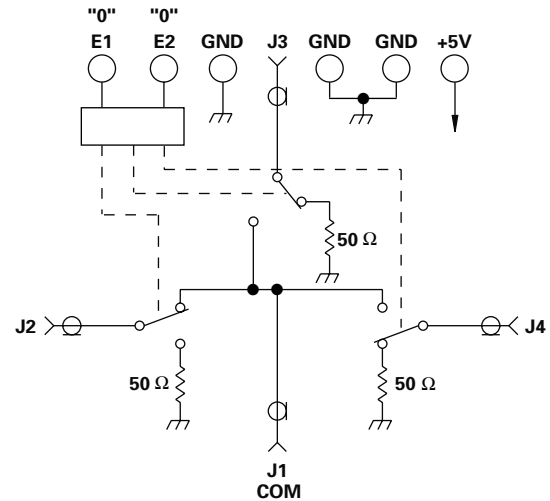
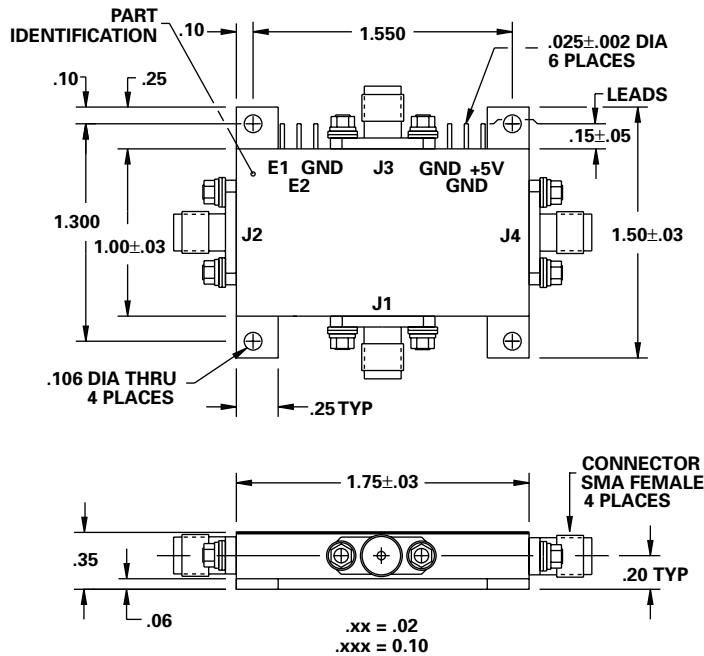
FEATURES

- 100 - 2000 MHz
- 80 dB Isolation
- 1 dB Insertion Loss
- TTL BCD Control
- Non-Reflective
- Replaceable SMA Connectors



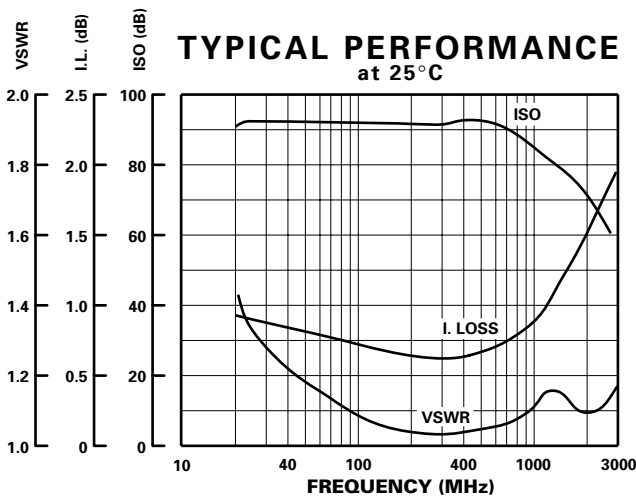
**MODEL NO.
CDS0669**

PIN Diode SP3T



GUARANTEED PERFORMANCE

Parameter	Min	Typ	Max	Units	Conditions	
Operating Frequency	100		2000	MHz		
DC Current		20	30	mA	At +5 VDC Supply	
Control Type		TTL			2 Lines, See Logic Table	
Control Current		High Low	1.0 -0.2	20 -0.4	μA mA	V _{IH} = +2.7V V _{IL} = +0.5V
Insertion Loss			0.7 1.0 1.5	1.0 1.5 2.0	dB	100 - 500 MHz 500 - 1000 MHz 1000 - 2000 MHz
Isolation	80 65	87 75			dB	100 - 1000 MHz 1000 - 2000 MHz
VSWR		Thru Termination	1.11/1 1.18/1	1.35/1 1.35/1		
Impedance			50		OHMS	
Switching Speed			185	500	nSEC	50% TTL to 90% / 10% RF
Transition (Rise/Fall) Time			20		nSEC	90% / 10% or 10% / 90% RF
Switching (Video) Transients			650		mV	Peak Value
Intercept Points		2nd 3rd	+50 +30	+67 +41	dBm	350 MHz / 100 MHz 175 MHz / 100 MHz
RF Power		Operate No Damage	+15 +25	+10 +20 +27	dBm	100 - 500 MHz 500 - 2000 MHz
Operating Temperature	-55	+25	+125		°C	TA



Logic Table		
Control Logic		RF Path
E2	E1	J1 (Com) To
0	0	J2
0	1	J3
1	0	J4