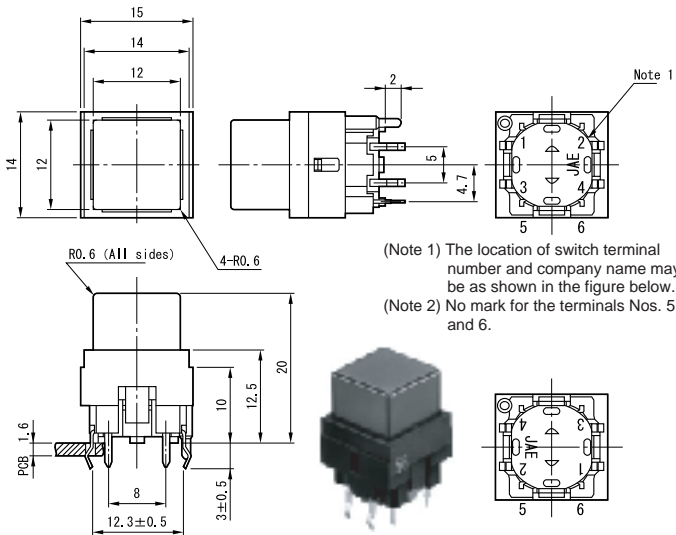
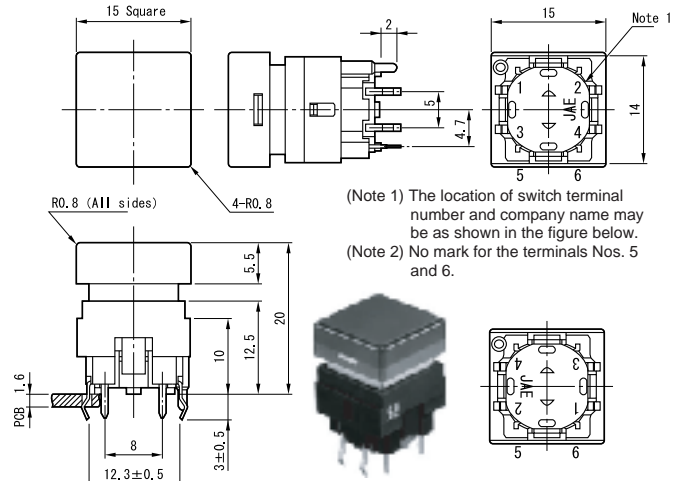


LIGHTED PUSH BUTTON SWITCHES 15ELseries

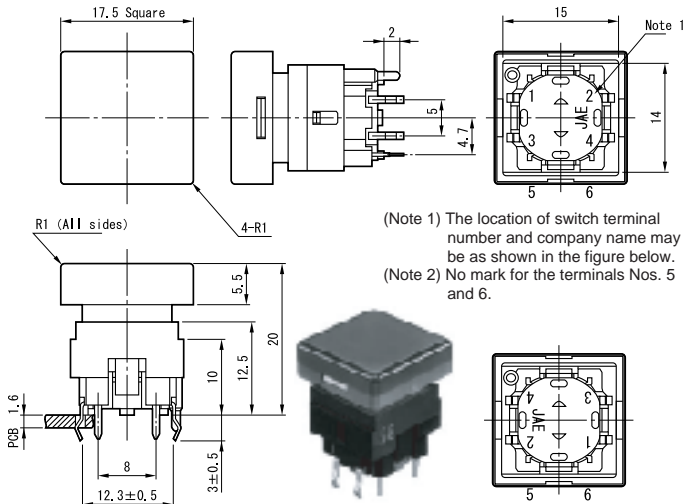
12 mm SQUARE TYPE: 15EL-122



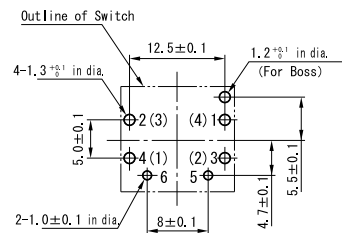
15 mm SQUARE TYPE: 15EL-152



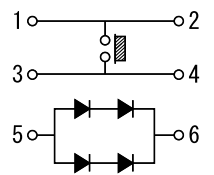
18 mm SQUARE TYPE: 15EL-182



P. C. B. MOUNTING HOLE



CIRCUIT DIAGRAM



PART NUMBER AND LED CHARACTERISTIC

| Part Number | Color | | LED Characteristic | | | | | Ambit Temp. VS. Forward Current |
|---------------|-----------|---------------------|----------------------------|----------------|----------------------------------|----------|-----------------------------|---------------------------------|
| | Top Cover | LED | Max. Rating (at 25 deg. C) | | Forward Voltage(V _F) | | Recommended Forward Current | |
| | | | V _R | I _F | Standard | Maximum | | |
| 15EL-***-0000 | White | Yellow(Y) | 10 Volt | 50 milliampere | 4.2 Volt | 5.2 Volt | 40 milliampere | |
| 15EL-***-0010 | Red | Red(SD) | | | 4.0 Volt | | | |
| 15EL-***-0020 | Blue | Yellowish Green(YG) | | | 4.4 Volt | | | |
| 15EL-***-0030 | Green | Green(G) | | | 4.4 Volt | | | |
| 15EL-***-0040 | Orange | Orange(D) | | | 4.4 Volt | | | |
| 15EL-***-0050 | Yellow | Yellowish Green(YG) | | | 4.4 Volt | | | |

(Note 1) *** Add code number of top cover size. 122 --- 12 mm square, 152 --- 15 mm square, 182 --- 18 mm square

(Note 2) LED characteristics refer to the ratings between its output terminals (terminals 5-6).

* CAUTIONS

(1) To avoid on over current to LED, we recommend to put on resistor (R) as shown in the following circuit diagram.

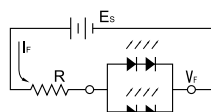
(2) Please see the above diagram in V_F etc.

(3) R : Protective Resistance

E_s : Supply Voltage

V_F : Forward Voltage

I_F : Forward Current



$$R = \frac{E_s - V_F}{I_F}$$